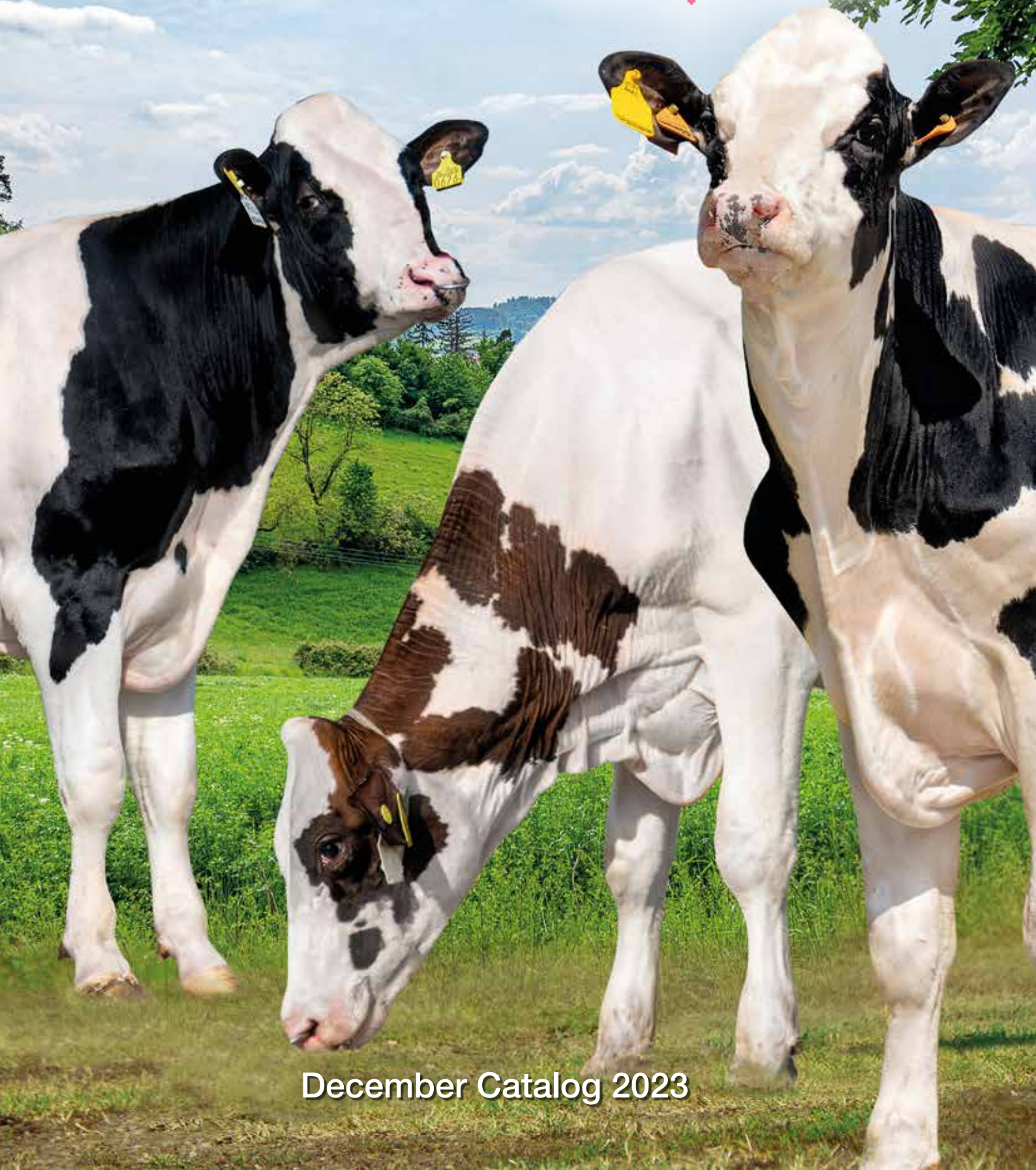


# Inseme

by STgenetics®



December Catalog 2023

# HOW TO READ PROOFS

<b>TPI</b> Total Performance Index	<b>46%</b> Production traits	<b>28%</b> Health traits	<b>26%</b> Type traits
<b>NM\$</b> Net Merit \$	<b>43%</b> Production traits	<b>41%</b> Health traits	<b>16%</b> Type traits
<b>CM\$</b> Cheese Merit \$	<b>50%</b> Production traits	<b>37%</b> Health traits	<b>13%</b> Type traits
<b>GM\$</b> Grazing Merit \$	<b>38%</b> Production traits	<b>48%</b> Health traits	<b>14%</b> Type traits
<b>FM\$</b> Fluid Merit \$	<b>45%</b> Production traits	<b>39%</b> Health traits	<b>16%</b> Type traits

- PTA:** Predicted Transmitting Ability PTA is the predicted difference between a parent animal's offspring and the average, due to the genes transmitted from the parent. Each PTA is given in the units used to measure the trait. The PTA for milk is reported in pounds, the PTA for productive life is reported in months.
- PTAM:** Predicted Transmitting Ability Milk production in pounds, reflecting the expected milk production of future mature daughters.
- PTAF:** Predicted Transmitting Ability Fat pounds, reflecting the expected butterfat production of mature daughters
- PTAF%:** Predicted Transmitting Ability Fat %, indicates the bull's genetic variance for transmitting fat and being positive or negative.
- PTAP:** Predicted Transmitting Ability Protein production in pounds reflecting the expected protein production of mature daughters.
- PTAP%:** Predicted Transmitting Ability Protein %, indicates the bull's genetic variance for transmitting protein and being positive or negative.
- PL:** Productive Life, gives a measure of the number of productive months, lifetime you can expect from a bull's daughters
- LIV:** Cow Liveability, measure of a cow's ability to remain alive while in the milking herd.



- SCS:** Somatic Cell Score, is used to improve mastitis resistance. Bulls with low a PTA for SCS (less than 3.00) are expected to have daughters with lower mastitis than bulls with high PTA for SCS (greater than 3.50)
- DPR:** Daughter Pregnancy Rate, is defined as the percentage of cows that become pregnant during each 21 day period. A DPR of '1.0' implies that daughters from this bull are 1% more likely to become pregnant during that estrus cycle than a bull with an evaluation of zero. Each increase of 1% in PTA DPR equals a decrease of 4 days in PTA days open
- HCR:** Heifer Conception Rate, a virgin heifers ability to conceive. Defined as a percentage of inseminated heifers that become pregnant each service. A HCR of 1.0 implies that daughters of this bull are 1% more likely to become pregnant as a heifer than daughters of a bull with an evaluation of 0.0
- CCR:** Cow Conception Rate, a lactating cows ability to conceive. Defined as a percentage of inseminated cows that become pregnant each service. A HCR of 1.0 implies that daughters of this bull are 1% more likely to become pregnant as a cow than daughters of a bull with an evaluation of 0.0.
- BCS:** Body Condition Score, reflects the animal's energy balance status in which research has clearly shown an association with improved female fertility, longevity and disease resistance.
- SCE:** Sire Calving Ease, the percentage of calving difficulties in first lactation animals. The average percentage difficult births is approximately 2.2%. in general, bulls with a SCE of 2.2% or less are considered "calving ease" bulls that are fine to use on heifers and smaller cows.
- DCE:** Daughter Calving Ease, like SCE, DCE is a measurement of the tendency of calves from a particular animal to be born easy (average 2.3%). Daughters of bulls with high DCE numbers would be expected to have a more difficult time giving birth than daughters of bulls with lower DCE numbers. DCE is evaluated on the same scale as SCE.
- SSB:** Sire Stillbirth, the percentage of a bull's offspring that are born dead to first lactation animals.
- DSB:** Daughter Stillbirth, is expressed as a percent stillbirth, where stillborn calves are those scored as dead at birth or born alive but died within 48 hours of birth. The average is 5.3%
- FE:** Feed Efficiency, is the net profit a farmer receives from an increase in production  $FE = (\$0.0008 \times PTAM) + (\$1.55 \times PTAF) + (\$1.73 \times PTAP) + (\$0.11 \times \text{Feed Saved})$
- FI:** Fertility Index, combines several reproductive components ( DPR, CCR, HCR and Early First Calving) in to one overall index.  $FI = (0.7 \times DPR) + (0.1 \times HCR) + (0.1 \times CCR) + (0.1 \times EFC)$
- PTAT:** Predicted Transmitting Ability for Type, is an estimate of the genetic superiority for conformation that bull will transmit to its offspring. This is directly correlated with the final score of the bull's daughters, not the linear traits.
- UDC:** Udder Composite Index, is an index based on ability for udder improvement. Udder composite includes six linear traits and the weighting for each trait's contribution to higher udder scores.
- FLC:** Foot and Leg Composite Index, is a measure of a bull's ability for foot and leg improvement.

Watch your savings grow with

# Vision<sup>+</sup>

**Be certain  
in your herd  
decision**

## 75 Vision<sup>+</sup>

## 20 Vision<sup>+</sup>

### RESOURCES

#### 75 Traits

CDCB***	Production	<b>6</b>
	Health and Longevity	<b>20</b>
	Conformation	<b>21</b>
	Selection Indices	<b>5</b>

#### Milk Markers

Kappa Caseina - Beta Caseina A2  
Beta Caseina AB - Beta Lactoglobulina

#### Markers Package

22 Trattori + Fattore Rosso

**Ecofeed**

EcoFeed<sup>®</sup>cow & EcoFeed<sup>®</sup>heifer

#### Parentage Discovery

Chromosomal  
**Mating**

### RESOURCES

#### 20 Traits

CDCB***	Production	<b>5</b>
	Health and Longevity	<b>4</b>
	Conformation	<b>3</b>
	Selection Indices	<b>3</b>

#### Milk Markers

Kappa Caseina - Beta Caseina A2  
Beta Caseina AB - Beta Lactoglobulina

#### Markers Package

Disponibili solo con aggiornamento ufficiale

**Ecofeed**

EcoFeed<sup>®</sup>cow & EcoFeed<sup>®</sup>heifer

#### Parentage Discovery

Chromosomal  
**Mating**



# Ecofeed®

The largest evidence-based Feed Conversion Efficiency index in the world

The EcoFeed® program utilizes a measure of feed conversion efficiency known as residual feed intake (RFI). RFI is a measure that quantifies the variation in feed intake beyond that needed to support maintenance and performance requirements. RFI can be used in multi trait selection indexes to simultaneously improve both feed conversion efficiency and other economically relevant traits, as it is independent of body size and production. This makes RFI an ideal trait for the EcoFeed® index as we strive to create a future in which dairy cattle produce more outputs with fewer inputs, providing farmers with the economic and environmental sustainability necessary for long term success.

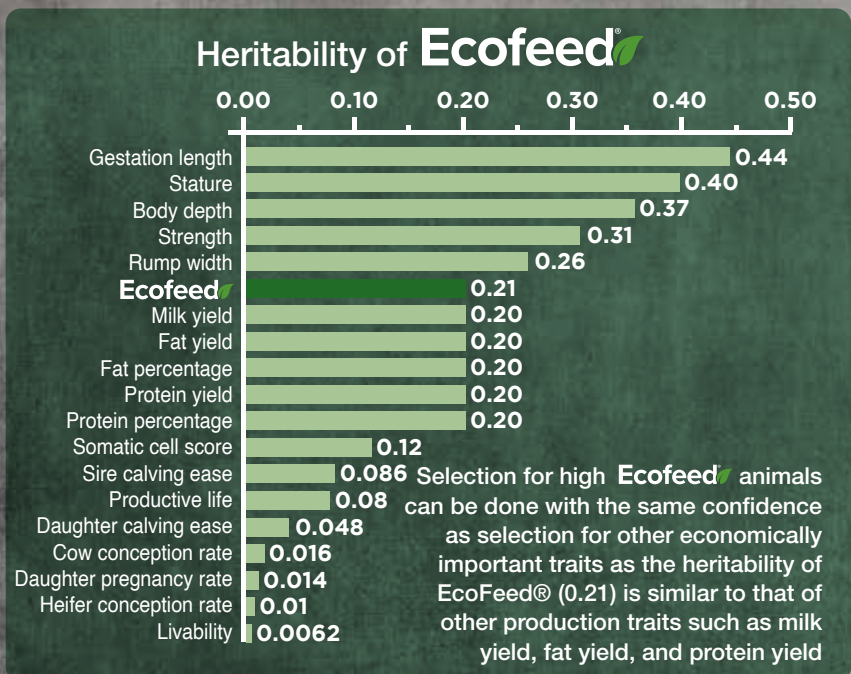


Bull name	Ecofeed® Cow
Indro	114
Brabus	112
Butler-P	111
Bristol	111
Bellagio	110
Prinston	110
Lance	108
Saluzzo	107
Alcerosso	107
Hadrian	106
Septimus	106
Emerito	106
Palma	105
Fabius	104
Duccio	104
Wally Red P	103
Sanzio	103
Barone Rosso	103
Blanco	102
Zusman	101

**15%**  
less feed  
consumed

**15%**  
less methane  
emissions

**21%**  
less water  
consumed



Bull name	Ecofeed® Heifer
Bramante	112
Alcerosso	111
Bellagio	111
Brunelleschi	111
Sonik	110
Zusman	107
Baruch	106
Telesforo	106
Salieri	105
Avon	105
Ponchielli	104
Hadrian	104
Scorpius	104
Sanders	104
Faletti	104
Tialoco	103
Suvan	103
Crocodile	103
Broly	103
Indro	103

# GPFT TOP LIST GPFT

Name	Father	Grandfather	A2A2	KBB	GPFT	IES €	ICS-PR €	Kg Lt	% Gr	Kg Gr	% Pr	Kg Pr	SCS	PL	DPR	SCE	Type	lcm	A & P
BRYCE	HOLYSMOKES	SIGILLO			4985	1258	1341	1069	0,63	109	0,35	78	112	112	110	104	0,98	1,49	1,47
PRINSTON	ZINGLER	SIGILLO		BB	4985	1346	1653	863	0,33	63	0,29	60	111	118	119	104	0,86	1,76	0,98
KING RED P	GIO P-RF	GYWER	A2A2		4908	1297	1280	1324	0,10	60	0,21	71	109	116	112	107	1,41	2,24	3,42
PARELLI	AEROSMITH	NACASH			4862	1175	1247	1870	0,24	95	0,17	83	109	112	106	104	1,53	2,34	1,78
PACEFULL	ZINGLER	SIGILLO		BB	4849	1226	1453	1279	0,28	74	0,24	69	108	115	115	104	0,64	1,98	-0,14
BELCANTO	CAPTAIN	DISCJOCKEY			4778	1166	1046	1205	0,85	138	0,32	77	111	114	101	104	1,15	1,37	1,81
JARMO	CAPTAIN	REDROCK	A2A2		4765	1234	1294	1147	0,42	85	0,22	64	109	112	115	103	0,39	0,94	1,83
GTA	MACHONE	SOUNDCLOUD			4747	1062	1106	1475	0,17	69	0,24	76	116	113	104	104	2,09	2,15	2,70
BRABUS	WHEELHOUSE	GUARANTEE	A2A2		4693	1173	1210	1028	0,44	88	0,24	63	111	117	109	105	1,22	2,09	0,32
AVON	KONRAD	WORLD CLASS	A2A2		4680	1169	1142	1081	0,34	82	0,18	60	108	116	113	103	0,83	1,94	-0,03
ARES	CRISALIS RF	PADAWAN			4665	1089	1245	1447	-0,05	49	0,27	79	112	110	111	104	0,66	1,49	-0,42
MANTRA	TRY ME	YODA		BB	4622	985	924	1243	0,45	94	0,34	82	106	112	100	103	1,73	2,82	0,46
KYRIOS RF	STRADIVARI	SPARK RED			4613	1070	1285	1481	-0,25	28	0,06	60	115	117	111	104	1,56	2,64	1,88
SALUZZO	PLINKO	DATELINE	A2A2		4612	1108	1061	1075	0,43	90	0,35	78	112	111	105	107	0,41	0,51	1,14
BARUCH	CAPTAIN	IMAX	A2A2		4593	1088	969	1303	0,73	124	0,21	70	106	112	105	103	0,92	1,71	1,37
PASOLINI	PADAWAN	GYMNAST	A2A2		4586	887	1027	1772	-0,28	34	0,21	86	106	101	111	103	1,58	1,39	2,06
GRIFONE	MACHONE	SOUNDCLOUD			4562	977	1080	697	0,11	36	0,28	56	118	114	107	103	2,28	2,77	2,81
DISTEFANO	HOTHAND	TOOHOT	A2A2		4554	1056	970	1404	0,30	82	0,19	67	110	116	105	105	1,48	2,44	0,61
FABIUS	ZAZZLE	LAWSON		BB	4540	1048	1023	1008	0,75	113	0,36	74	107	112	106	104	0,35	1,03	-2,00
BARNUM	PASSWORD	MOJO	A2A2	BB	4531	1152	1184	971	0,11	47	0,29	66	107	115	110	106	1,13	1,58	2,01

USDA 12/2023

# GLPI TOP LIST



Naab Code	Name	A2A2	GLPI	Pro\$	Milk	Fat	Fat %	Pr	Pr %	Conf	Ms	F&L
643H005683	PARELLI		3833	3592	1466	97	0,34	78	0,24	6	7	7
643H005256	BELCANTO		3731	3387	1056	140	0,85	77	0,35	2	3	3
643H005168	CROCODILE	A2A2	3723	3492	845	109	0,66	58	0,26	2	5	1
643H000312	BARNUM	A2A2	3719	3803	1228	76	0,23	89	0,38	3	2	8
643H005163	SEPTIMUS	A2A2	3689	3038	934	120	0,73	76	0,37	4	4	3
643H005170	ASTER RC		3688	3400	1318	120	0,59	71	0,22	4	2	8
643H005261	JUNO	A2A2	3684	3328	1910	84	0,07	85	0,18	3	3	7
643H005160	SUVAN	A2A2	3670	3299	1445	128	0,62	73	0,21	-4	0	-2
543H000292	KING RED P	A2A2	3667	3332	1727	63	-0,04	78	0,17	3	5	8
643H005263	BUTLER P	A2A2	3665	3353	1790	85	0,11	86	0,22	5	4	6

USDA 12/2023

# GPLI TOP LIST



Naab Code	Name	A2A2	GPLI	Milk	Fat	Fat %	Pr	Pr %	Type	UDC	FLC
643H005542	HORIZON	A2A2	841	727	48,00	0,21	30,90	0,08	0,83	1,30	0,25
643H005169	CARTIER		834	836	36,80	0,04	32,20	0,05	1,04	1,19	1,03
643H005256	BELCANTO		831	771	49,10	0,20	32,50	0,08	1,47	1,70	1,20
643H005257	JARMO	A2A2	814	861	32,40	-0,02	31,00	0,03	0,87	1,68	0,61
643H005172	NORMAN	A2A2	814	1063	47,00	0,05	34,50	-0,01	0,95	1,57	0,26
643H005160	SUVAN	A2A2	810	870	40,90	0,07	28,60	0,00	0,26	0,88	0,26
643H005175	DELAINE	A2A2	793	902	38,90	0,03	30,50	0,01	1,46	1,86	0,98
643H005261	JUNO	A2A2	771	1059	29,80	-0,14	34,30	-0,01	1,78	1,57	1,70
643H005255	HADRIAN	A2A2	763	998	45,00	0,05	29,70	-0,03	0,67	0,81	0,34
643H000311	MAITAI	A2A2	752	824	48,10	0,17	33,20	0,07	1,34	1,27	0,77

USDA 12/2023



# GTPI TOP LIST



Name	A2A2	TPI	NM\$	CM\$	PTA Milk	PTA Fat	% Fat	PTA Pro	% Pro	SCS	PL	PTA DPR	SCE	PTA Type	UDC	FLC
DG PAKUNO		<b>3149</b>	1204	1211	1666	138	0,25	63	0,04	3,02	4,70	0,80	1,60	0,82	1,38	0,47
SEPTIMUS	A2A2	<b>3148</b>	1082	1100	1260	124	0,26	69	0,10	2,94	4,40	0,30	1,90	1,79	1,71	0,86
LAMBERT	A2A2	<b>3124</b>	1209	1221	1941	130	0,19	72	0,04	2,80	5,50	0,30	1,40	0,56	0,75	-0,11
LANCE	A2A2	<b>3106</b>	1178	1190	1640	137	0,25	62	0,04	2,76	5,50	-0,50	1,80	0,79	1,15	0,18
BOPPE		<b>3083</b>	1166	1174	2104	134	0,18	78	0,04	2,98	3,60	-1,80	1,50	1,18	1,02	0,52
SUVAN	A2A2	<b>3076</b>	1179	1191	1504	125	0,23	58	0,04	2,79	5,70	1,30	2,10	0,44	0,90	0,34
HADRIAN	A2A2	<b>3075</b>	1152	1157	1856	131	0,20	64	0,02	2,96	5,00	-0,60	1,60	0,94	0,95	0,05
BRISTOL	A2A2	<b>3073</b>	968	974	1753	130	0,21	67	0,04	3,07	2,00	-2,00	2,00	2,51	2,43	0,87
HORIZON	A2A2	<b>3072</b>	1073	1086	1513	135	0,26	67	0,07	2,90	3,70	0,20	1,70	0,70	1,07	0,15
BARUCH	A2A2	<b>3065</b>	1037	1050	1258	127	0,27	54	0,05	2,82	3,90	-1,50	1,70	1,70	2,07	1,04
NERIAH	A2A2	<b>3057</b>	1100	1114	1542	117	0,20	64	0,05	2,79	5,40	-0,20	1,60	0,85	1,49	0,62
DELAINE	A2A2	<b>3032</b>	1119	1131	1511	109	0,17	61	0,05	2,80	6,20	-0,50	1,80	0,75	1,53	0,51
CROCODILE	A2A2	<b>3026</b>	1097	1113	1280	109	0,20	54	0,05	2,64	6,50	0,50	1,50	0,71	1,11	0,33
CARTIER		<b>3023</b>	1127	1141	1197	103	0,20	59	0,07	2,91	6,40	1,80	1,50	0,42	1,00	0,13
BELCANTO		<b>3019</b>	1003	1025	862	124	0,31	55	0,10	2,73	4,80	-1,20	1,70	1,22	1,56	0,62
NORMAN	A2A2	<b>3018</b>	1124	1133	1749	122	0,18	64	0,03	2,86	4,70	-0,40	1,40	0,24	1,45	0,10
HEREWARD P	A2A2	<b>3017</b>	974	969	2543	115	0,06	72	-0,02	3,11	3,50	-1,60	1,60	1,77	1,88	0,63
JARMO	A2A2	<b>3011</b>	1027	1042	1469	89	0,11	63	0,06	2,75	5,00	1,60	1,80	0,77	1,66	0,41
ASTER RC		<b>2996</b>	1006	1019	1362	100	0,16	57	0,05	2,76	4,70	0,20	1,60	1,40	1,59	1,01
BANDOLERO	A2A2	<b>2995</b>	910	929	653	101	0,26	51	0,11	2,92	4,00	1,70	1,80	1,56	1,61	0,68
ZUSMAN	A2A2	<b>2959</b>	917	930	1584	87	0,09	67	0,06	2,91	4,10	-0,80	2,20	1,92	1,52	0,45
FABIUS		<b>2946</b>	908	934	615	97	0,26	52	0,11	2,65	4,70	-0,20	1,90	1,38	1,37	0,49
JUNO	A2A2	<b>2943</b>	986	992	2113	80	0,00	71	0,02	2,86	5,00	0,00	1,40	1,12	1,33	0,80
PALMA RC		<b>2894</b>	961	979	1588	86	0,08	70	0,07	2,72	4,80	0,20	1,50	0,61	0,37	0,01
SCORPIUS		<b>2892</b>	917	931	1122	83	0,14	45	0,03	2,60	6,70	1,30	1,50	0,81	1,28	-0,23
MAITAI	A2A2	<b>2877</b>	833	847	1104	102	0,20	56	0,07	2,94	2,50	-0,80	1,50	1,35	1,52	0,42
BRABUS	A2A2	<b>2863</b>	912	930	950	75	0,13	50	0,07	2,68	5,60	0,00	1,90	1,24	1,64	0,03
WODOO		<b>2855</b>	872	883	1171	110	0,22	50	0,05	2,87	2,20	-2,40	1,80	1,62	1,50	0,22
PARELLI		<b>2842</b>	761	775	1146	75	0,11	52	0,06	2,78	3,00	-0,90	1,70	1,42	2,29	1,06
BARNUM	A2A2	<b>2831</b>	847	869	1112	59	0,06	62	0,09	2,71	5,00	0,90	1,80	1,10	0,94	0,25
GRIFONE		<b>2826</b>	628	653	881	50	0,06	52	0,09	2,47	4,20	0,80	2,60	2,36	2,11	0,65
BLANCO		<b>2820</b>	708	726	1153	90	0,16	56	0,07	2,69	2,20	-1,70	2,60	1,98	2,25	-0,11
DISTEFANO	A2A2	<b>2810</b>	742	761	1061	72	0,11	53	0,07	2,68	3,70	-1,20	1,70	1,72	2,03	0,16
MANTRA		<b>2804</b>	828	849	1140	66	0,08	62	0,09	2,73	5,00	-2,20	2,60	1,84	1,68	0,26
LILIUM		<b>2803</b>	725	744	1444	57	0,01	63	0,06	2,61	3,90	-0,90	2,10	1,39	1,86	0,50
PRINSTON		<b>2802</b>	761	781	607	51	0,10	42	0,08	2,66	6,30	3,10	1,80	0,87	1,24	-0,21
GTA		<b>2789</b>	697	718	1162	60	0,05	56	0,07	2,55	3,30	-0,70	2,20	1,90	1,57	0,51
PACEFULL		<b>2786</b>	786	801	1014	52	0,04	49	0,06	2,77	5,00	1,20	1,60	1,25	1,61	0,12
SALUZZO	A2A2	<b>2783</b>	877	903	1190	75	0,10	63	0,09	2,52	5,00	0,00	1,40	0,12	0,15	-0,62
SUPERFAST		<b>2779</b>	750	769	1390	70	0,06	68	0,08	2,78	3,60	-0,80	2,20	1,39	0,94	-0,23
KING RED P	A2A2	<b>2776</b>	747	762	1096	54	0,04	50	0,05	2,71	4,60	1,50	1,30	0,91	1,21	1,35
LUDWIG	A2A2	<b>2769</b>	786	803	1470	61	0,02	64	0,06	2,71	4,60	-1,40	1,80	1,21	0,88	0,80
AVON	A2A2	<b>2768</b>	775	789	786	74	0,15	41	0,06	2,77	4,70	0,50	2,00	0,69	1,47	-0,27
OGLETHORPE P		<b>2763</b>	793	818	556	69	0,17	53	0,13	2,74	5,00	0,10	1,80	0,57	0,93	0,49
BROLY	A2A2	<b>2760</b>	648	660	1365	75	0,08	59	0,06	2,92	2,20	-1,10	2,40	1,96	1,16	0,97
BUTLER P	A2A2	<b>2754</b>	765	774	1556	62	0,01	61	0,04	2,92	3,90	-1,10	1,70	1,17	1,09	0,61
ERIK P		<b>2754</b>	656	674	920	75	0,14	53	0,08	2,79	2,50	0,60	2,60	1,19	1,17	0,06
PORTOFINO		<b>2753</b>	574	587	1416	55	0,00	61	0,06	2,84	1,90	-1,40	2,20	2,36	2,35	0,49
TIALOCO		<b>2733</b>	693	709	1105	27	-0,05	43	0,03	2,49	5,90	1,80	1,70	1,66	2,06	0,08
ELETTRIO		<b>2727</b>	668	695	-81	67	0,25	30	0,12	2,59	4,50	2,10	2,00	0,85	1,74	-0,21
TORTU		<b>2724</b>	742	764	829	46	0,05	51	0,09	2,66	5,40	1,30	2,20	1,04	1,09	-0,36
SONIK	A2A2	<b>2705</b>	646	661	1118	69	0,09	54	0,07	2,83	1,80	-1,80	2,50	1,92	1,84	0,12
ATHOS RED		<b>2679</b>	737	748	907	44	0,03	33	0,02	2,61	6,40	1,70	1,20	0,46	1,07	0,96
ARES		<b>2678</b>	699	720	1177	38	-0,02	58	0,07	2,56	5,20	1,50	1,90	0,41	0,64	-0,45
GHIBERTI	A2A2	<b>2669</b>	556	574	565	76	0,19	40	0,08	2,74	1,20	-2,60	1,70	2,09	2,04	1,03
ALCEROSSO		<b>2661</b>	766	779	1066	67	0,09	52	0,06	2,92	3,80	-1,20	1,80	0,92	1,07	0,39
BELLAGIO	A2A2	<b>2661</b>	598	606	918	66	0,11	42	0,05	2,99	2,30	-2,00	2,20	1,77	2,07	0,69
PASOLINI	A2A2	<b>2661</b>	566	579	1543	25	-0,12	62	0,05	2,79	3,20	2,90	1,70	0,94	1,10	-0,24
APPIUS RED		<b>2652</b>	763	780	581	39	0,06	41	0,08	2,82	5,80	0,90	1,40	0,34	1,16	1,21
CARLOMAGNO		<b>2652</b>	639	654	1552	56	-0,01	68	0,07	2,85	3,40	-1,60	2,60	1,28	0,53	-0,40
BRUNELLESCHI	A2A2	<b>2636</b>	568	576	1622	63	0,00	56	0,02	2,78	0,80	-1,90	2,10	1,79	1,99	-0,62

# NM\$ TOP 10



Naab Code	Name	Sire	Mgs	A2A2	TPI	NM\$	CM\$	PTA Milk	PTA Fat	% Fat	PTA Pro	% Pro	SCS	PL	PTA DPR	SCE	PTA Type	UDC	FLC
643H005166	LAMBERT	CAPTAIN	CHARL	A2A2	3124	<b>1209</b>	1221	1941	130	0,19	72	0,04	2,80	5,50	0,30	1,40	0,56	0,75	-0,11
643H005162	PAKUNO	CAPTAIN	CHARL		3149	<b>1204</b>	1211	1666	138	0,25	63	0,04	3,02	4,70	0,80	1,60	0,82	1,38	0,47
643H005160	SUVAN	CAPTAIN	CHARL	A2A2	3076	<b>1179</b>	1191	1504	125	0,23	58	0,04	2,79	5,70	1,30	2,10	0,44	0,90	0,34
643H005164	LANCE	CAPTAIN	CHARL	A2A2	3106	<b>1178</b>	1190	1640	137	0,25	62	0,04	2,76	5,50	-0,50	1,80	0,79	1,15	0,18
643H005159	BOPPE	CAPTAIN	CHARL		3083	<b>1166</b>	1174	2104	134	0,18	78	0,04	2,98	3,60	-1,80	1,50	1,18	1,02	0,52
643H005255	HADRIAN	CAPTAIN	CHARL	A2A2	3075	<b>1152</b>	1157	1856	131	0,20	64	0,02	2,96	5,00	-0,60	1,60	0,94	0,95	0,05
643H005169	CARTIER	CAPTAIN	KENNEDY		3023	<b>1127</b>	1141	1197	103	0,20	59	0,07	2,91	6,40	1,80	1,50	0,42	1,00	0,13
643H005172	NORMAN	CAPTAIN	TOPSTONE	A2A2	3018	<b>1124</b>	1133	1749	122	0,18	64	0,03	2,86	4,70	-0,40	1,40	0,24	1,45	0,10
643H005175	DELAINE	CAPTAIN	CRIMSON	A2A2	3032	<b>1119</b>	1131	1511	109	0,17	61	0,05	2,80	6,20	-0,50	1,80	0,75	1,53	0,51
643H005173	NERIAH	CAPTAIN	TOPSTONE	A2A2	3057	<b>1100</b>	1114	1542	117	0,20	64	0,05	2,79	5,40	-0,20	1,60	0,85	1,49	0,62

USDA 12/2023

# Milk TOP 10



Naab Code	Name	Sire	Mgs	A2A2	TPI	NM\$	CM\$	PTA Milk	PTA Fat	% Fat	PTA Pro	% Pro	SCS	PL	PTA DPR	SCE	PTA Type	UDC	FLC
643H005161	HEREWARD P	CAPTAIN	CHARL	A2A2	3017	974	969	<b>2543</b>	115	0,06	72	-0,02	3,11	3,50	-1,60	1,60	1,77	1,88	0,63
543H00221	EMERITO	ALTAMONTOYA	JEDI		2641	659	666	<b>2189</b>	55	-0,10	73	0,02	2,85	3,40	-2,80	2,10	1,37	0,86	-0,67
643H005261	JUNO	CAPTAIN	TOPSTONE	A2A2	2943	986	992	<b>2113</b>	80	0,00	71	0,02	2,86	5,00	0,00	1,40	1,12	1,33	0,80
643H005159	BOPPE	CAPTAIN	CHARL		3083	1166	1174	<b>2104</b>	134	0,18	78	0,04	2,98	3,60	-1,80	1,50	1,18	1,02	0,52
643H005166	LAMBERT	CAPTAIN	CHARL	A2A2	3124	1209	1221	<b>1941</b>	130	0,19	72	0,04	2,80	5,50	0,30	1,40	0,56	0,75	-0,11
543H002270	BERTON	BOULEVARD	SOUND		2628	580	585	<b>1864</b>	54	-0,06	55	-0,01	2,70	2,50	-2,40	2,80	1,73	1,45	0,29
543H002208	RUBESCO	IMAX	JEDI	A2A2	2667	619	623	<b>1861</b>	64	-0,03	66	0,03	3,04	1,70	-3,40	1,90	1,63	1,75	0,24
643H005255	HADRIAN	CAPTAIN	CHARL	A2A2	3075	1152	1157	<b>1856</b>	131	0,20	64	0,02	2,96	5,00	-0,60	1,60	0,94	0,95	0,05
643H005545	BRISTOL	CAPTAIN	IMAX	A2A2	3073	968	974	<b>1753</b>	130	0,21	67	0,04	3,07	2,00	-2,00	2,00	2,51	2,43	0,87
643H005172	NORMAN	CAPTAIN	TOPSTONE	A2A2	3018	1124	1133	<b>1749</b>	122	0,18	64	0,03	2,86	4,70	-0,40	1,40	0,24	1,45	0,10

USDA 12/2023

# A2A2 TOP 10



Naab Code	Name	Sire	Mgs	A2A2	TPI	NM\$	CM\$	PTA Milk	PTA Fat	% Fat	PTA Pro	% Pro	SCS	PL	PTA DPR	SCE	PTA Type	UDC	FLC
643H005163	SEPTIMUS	CAPTAIN	SUBZERO	<b>A2A2</b>	3148	1082	1100	1260	124	0,26	69	0,10	2,94	4,40	0,30	1,90	1,79	1,71	0,86
643H005166	LAMBERT	CAPTAIN	CHARL	<b>A2A2</b>	3124	1209	1221	1941	130	0,19	72	0,04	2,80	5,50	0,30	1,40	0,56	0,75	-0,11
643H005164	LANCE	CAPTAIN	CHARL	<b>A2A2</b>	3106	1178	1190	1640	137	0,25	62	0,04	2,76	5,50	-0,50	1,80	0,79	1,15	0,18
643H005160	SUVAN	CAPTAIN	CHARL	<b>A2A2</b>	3076	1179	1191	1504	125	0,23	58	0,04	2,79	5,70	1,30	2,10	0,44	0,90	0,34
643H005255	HADRIAN	CAPTAIN	CHARL	<b>A2A2</b>	3075	1152	1157	1856	131	0,20	64	0,02	2,96	5,00	-0,60	1,60	0,94	0,95	0,05
643H005545	BRISTOL	CAPTAIN	IMAX	<b>A2A2</b>	3073	968	974	1753	130	0,21	67	0,04	3,07	2,00	-2,00	2,00	2,51	2,43	0,87
643H005542	HORIZON	CAPTAIN	CHARL	<b>A2A2</b>	3072	1073	1086	1513	135	0,26	67	0,07	2,90	3,70	0,20	1,70	0,70	1,07	0,15
643H005174	BARUCH	CAPTAIN	IMAX	<b>A2A2</b>	3065	1037	1050	1258	127	0,27	54	0,05	2,82	3,90	-1,50	1,70	1,70	2,07	1,04
643H005173	NERIAH	CAPTAIN	TOPSTONE	<b>A2A2</b>	3057	1100	1114	1542	117	0,20	64	0,05	2,79	5,40	-0,20	1,60	0,85	1,49	0,62
643H005175	DELAINE	CAPTAIN	CRIMSON	<b>A2A2</b>	3032	1119	1131	1511	109	0,17	61	0,05	2,80	6,20	-0,50	1,80	0,75	1,53	0,51

USDA 12/2023



# Free Haplotypes TOP 10

Free Haplotypes  


Naab Code	Name	Sire	Mgs	A2A2	TPI	NM\$	CM\$	PTA Milk	PTA Fat	% Fat	PTA Pro	% Pro	SCS	PL	PTA DPR	SCE	PTA Type	UDC	FLC
643H005162	<b>PAKUNO</b>	CAPTAIN	CHARL		<b>3149</b>	1204	1211	1666	138	0,25	63	0,04	3,02	4,70	0,80	1,60	0,82	1,38	0,47
643H005163	<b>SEPTIMUS</b>	CAPTAIN	SUBZERO	A2A2	<b>3148</b>	1082	1100	1260	124	0,26	69	0,10	2,94	4,40	0,30	1,90	1,79	1,71	0,86
643H005166	<b>LAMBERT</b>	CAPTAIN	CHARL	A2A2	<b>3124</b>	1209	1221	1941	130	0,19	72	0,04	2,80	5,50	0,30	1,40	0,56	0,75	-0,11
643H005164	<b>LANCE</b>	CAPTAIN	CHARL	A2A2	<b>3106</b>	1178	1190	1640	137	0,25	62	0,04	2,76	5,50	-0,50	1,80	0,79	1,15	0,18
643H005159	<b>BOPPE</b>	CAPTAIN	CHARL		<b>3083</b>	1166	1174	2104	134	0,18	78	0,04	2,98	3,60	-1,80	1,50	1,18	1,02	0,52
643H005160	<b>SUVAN</b>	CAPTAIN	CHARL	A2A2	<b>3076</b>	1179	1191	1504	125	0,23	58	0,04	2,79	5,70	1,30	2,10	0,44	0,90	0,34
643H005255	<b>HADRIAN</b>	CAPTAIN	CHARL	A2A2	<b>3075</b>	1152	1157	1856	131	0,20	64	0,02	2,96	5,00	-0,60	1,60	0,94	0,95	0,05
643H005545	<b>BRISTOL</b>	CAPTAIN	IMAX	A2A2	<b>3073</b>	968	974	1753	130	0,21	67	0,04	3,07	2,00	-2,00	2,00	2,51	2,43	0,87
643H005542	<b>HORIZON</b>	CAPTAIN	CHARL	A2A2	<b>3072</b>	1073	1086	1513	135	0,26	67	0,07	2,90	3,70	0,20	1,70	0,70	1,07	0,15
643H005174	<b>BARUCH</b>	CAPTAIN	IMAX	A2A2	<b>3065</b>	1037	1050	1258	127	0,27	54	0,05	2,82	3,90	-1,50	1,70	1,70	2,07	1,04

USDA 12/2023

## Septimus

Captain x SUAMI (Subzero)  
 x Comestar LAUMABLA (Doc)  
 x Comestar LAUMAY (Jedi)  
 discendente dalla famiglia  
 di Comestar LAUTAMIE

**GTPI: 3148**  
**NM€: 1082**  
**CFP: 193**  
**DPR: 0.3**  
**PTAT: 1.79**  
**UDC: 1.71**

**TOP 100 Genomic bull high ranking in gTPI available**



PODERI  
INSEME

## ARES

IT004992438666 - 543HO00293 - aAa 243



Poderi Inseme Ares

CRISALIS RF

PADAWAN

FRANCHISE

Gywer x Salvatore

Burla B+83

Adorata MB87

TPI  
**+2678**NET MERIT \$  
**+699**CHEESE MERIT \$  
**+720**

## ► PRODUCTION TRAITS (79% REL)

Milk	% Fat	Fat	% Protein	Protein
<b>+1177 lbs</b>	<b>-0,02</b>	<b>+38</b>	<b>+0,07</b>	<b>+58</b>
K Cas <b>AB</b>		Beta Lact <b>AA</b>		Beta Cas <b>A1A2</b>

## ► HEALTH TRAITS

SCS	<b>+2,56</b>	SCE	<b>+1,90</b>
PL	<b>+5,20</b>	DCE	<b>+2,40</b>
DPR	<b>+1,50</b>	FI	<b>+1,70</b>



Criseri Secretariat Vanessa MB85

Free Haplotypes  

## ► TYPE TRAITS

PTAT **+0,41** UDC **+0,64** FLC **-0,45**

Stature	1,29
Strength	0,37
Body Dept	0,08
Dairy Form	-0,12
Rump Angle	0,26
Thurl Width	0,29
Rear Legs-Side	-1,02
Rear Legs-Rear	0,16
Foot Angle	0,48
Feet & Legs Score	-0,24
F. Udder Attachment	1,09
Rear Udder Height	1,04
Rear Udder Width	0,64
Udder Cleft	-0,13
Udder Depth	1,51
Front Teat Placement	-0,03
Rear Teat P. Rear	0,07
Teat Length	0,40

SERRA FARM  
ARETINO

## ARETINO

IT001991144894 - 543HO00218



Serra Farm Aretino

PADAWAN

SUPERSHOT

TANGO UNO

Jedi x Enforcer

Serra Farm Aryel ET  
VG85Serra Farm Tango  
Vera VG88TPI  
**+2421**NET MERIT \$  
**+363**CHEESE MERIT \$  
**+371**

## ► PRODUCTION TRAITS (81% REL)

Milk	% Fat	Fat	% Protein	Protein
<b>+1294 lbs</b>	<b>-0,10</b>	<b>+20</b>	<b>+0,01</b>	<b>+43</b>
K Cas <b>AB</b>		Beta Lact <b>AA</b>		Beta Cas <b>A2A2</b>

## ► HEALTH TRAITS

SCS	<b>+2,73</b>	SCE	<b>+2,20</b>
PL	<b>+2,90</b>	DCE	<b>+2,30</b>
DPR	<b>+1,10</b>	FI	<b>+1,20</b>



Rimboisio Supershot

Free Haplotypes  


## ► TYPE TRAITS

PTAT **+0,64** UDC **+0,62** FLC **-0,58**

Stature	1,57
Strength	1,43
Body Dept	0,69
Dairy Form	0,06
Rump Angle	0,61
Thurl Width	1,50
Rear Legs-Side	-2,35
Rear Legs-Rear	-0,03
Foot Angle	0,93
Feet & Legs Score	-0,20
F. Udder Attachment	1,13
Rear Udder Height	0,68
Rear Udder Width	0,91
Udder Cleft	0,75
Udder Depth	1,25
Front Teat Placement	0,36
Rear Teat P. Rear	0,70
Teat Length	-0,34



PALASSOTTO  
INSEME

# AVON

IT004992215987 - 543HO00286 - aAa 423

SEXED SEMEN *Made in Italy*  
**FOEMINA**  
Sexed **ULTRA 4M**

**KONRAD**

**WORLD CLASS**

**FRAZZLED**

Hotjob x Jedi

CO-OP Yola 9168

CO-OP Frazzled  
8114 8561

**TPI**  
**+2768**

**NET MERIT \$**  
**+775**

**CHEESE MERIT \$**  
**+789**



Palassotto Inseme Avon

► **PRODUCTION TRAITS** (79% REL)

Milk	% Fat	Fat	% Protein	Protein
<b>+786 lbs</b>	<b>+0,15</b>	<b>+74</b>	<b>+0,06</b>	<b>+41</b>
K Cas <b>AA</b>		Beta Lact <b>AA</b>		Beta Cas <b>A2A2</b>

► **HEALTH TRAITS**

SCS	<b>+2,77</b>	SCE	<b>+2,00</b>
PL	<b>+4,70</b>	DCE	<b>+1,90</b>
DPR	<b>+0,50</b>	FI	<b>+1,20</b>

► **TYPE TRAITS**

PTAT **+0,69** UDC **+1,47** FLC **-0,27**

Stature	0,43
Strength	0,17
Body Dept	-0,42
Dairy Form	-0,87
Rump Angle	-0,55
Thurl Width	0,30
Rear Legs-Side	-0,89
Rear Legs-Rear	-0,25
Foot Angle	0,78
Feet & Legs Score	-0,17
F. Udder Attachment	2,41
Rear Udder Height	1,26
Rear Udder Width	0,74
Udder Cleft	0,50
Udder Depth	2,63
Front Teat Placement	0,60
Rear Teat P. Rear	0,66
Teat Length	-1,44

Free **Haplotypes**  
[i-][i-][i-]



**New**

DG

# BANDOLERO

NL000634723483 - 643HO05258

SEXED SEMEN *Made in Italy*  
**FOEMINA**  
Sexed **ULTRA 4M**

**ALTAALANZO**

**ARISTOCRAT**

**ROCKSTAR**

Altazazzle x Guinness

Nh GI Dg Aristo Bayla

Aardema Sunset  
Beauty-ET

**TPI**  
**+2995**

**NET MERIT \$**  
**+910**

**CHEESE MERIT \$**  
**+929**



DG Bandolero

► **PRODUCTION TRAITS** (79% REL)

Milk	% Fat	Fat	% Protein	Protein
<b>+653 lbs</b>	<b>+0,26</b>	<b>+101</b>	<b>+0,11</b>	<b>+51</b>
K Cas <b>AB</b>		Beta Lact <b>AA</b>		Beta Cas <b>A2A2</b>

► **HEALTH TRAITS**

SCS	<b>+2,92</b>	SCE	<b>+1,80</b>
PL	<b>+4,00</b>	DCE	<b>+1,60</b>
DPR	<b>+1,70</b>	FI	<b>+2,00</b>

► **TYPE TRAITS**

PTAT **+1,56** UDC **+1,61** FLC **+0,68**

Stature	1,60
Strength	0,45
Body Dept	0,25
Dairy Form	0,68
Rump Angle	0,48
Thurl Width	1,10
Rear Legs-Side	-1,07
Rear Legs-Rear	0,85
Foot Angle	1,27
Feet & Legs Score	1,02
F. Udder Attachment	2,42
Rear Udder Height	1,93
Rear Udder Width	1,47
Udder Cleft	0,58
Udder Depth	2,54
Front Teat Placement	0,80
Rear Teat P. Rear	0,62
Teat Length	-0,45



IL GERMOGLIO  
INSEME**BARNUM****PASSWORD**

Eldorado x Altamontoya

**MOJO**Il Germoglio Mojo  
1017 - GP83**ALTARABO**Il Germoglio Rabo  
Betty 318**TPI**  
**+2831****NET MERIT \$**  
**+847****CHEESE MERIT \$**  
**+869****PRODUCTION TRAITS (79% REL)**

Milk	% Fat	Fat	% Protein	Protein
<b>+1112 lbs</b>	<b>+0,06</b>	<b>+59</b>	<b>+0,09</b>	<b>+62</b>
K Cas <b>BB</b>		Beta Lact <b>AA</b>		Beta Cas <b>A2A2</b>

**HEALTH TRAITS**

SCS	<b>+2,71</b>	SCE	<b>+1,80</b>
PL	<b>+5,00</b>	DCE	<b>+1,70</b>
DPR	<b>+0,90</b>	FI	<b>+1,50</b>

**Free Haplotypes**  
[i-][i-][i-]

IT019992294271 - ET TL TM TV TY - 643HO00312

SEXED SEMEN *Made in Italy*  
**FOEMINA**  
Sexed **ULTRA 4M**

Il Germoglio Inseme Barnum

**TYPE TRAITS**PTAT **+1,10** UDC **+0,94** FLC **+0,25**

Stature	0,61
Strength	0,60
Body Dept	0,03
Dairy Form	-0,13
Rump Angle	-0,33
Thurl Width	0,88
Rear Legs-Side	0,17
Rear Legs-Rear	0,38
Foot Angle	0,55
Feet & Legs Score	0,34
F. Udder Attachment	1,91
Rear Udder Height	0,83
Rear Udder Width	0,71
Udder Cleft	-0,04
Udder Depth	1,70
Front Teat Placement	0,03
Rear Teat P. Rear	-0,45
Teat Length	-0,26

DGF

**BARUCH****CAPTAIN**

Charl x Sabre

**IMAX**

DGF Brenda ET

**SILVER**

DKR Baccardi ET

**TPI**  
**+3065****NET MERIT \$**  
**+1037****CHEESE MERIT \$**  
**+1050****PRODUCTION TRAITS (81% REL)**

Milk	% Fat	Fat	% Protein	Protein
<b>+1258 lbs</b>	<b>+0,27</b>	<b>+127</b>	<b>+0,05</b>	<b>+54</b>
K Cas <b>AB</b>		Beta Lact <b>AB</b>		Beta Cas <b>A2A2</b>

**HEALTH TRAITS**

SCS	<b>+2,82</b>	SCE	<b>+1,70</b>
PL	<b>+3,90</b>	DCE	<b>+1,80</b>
DPR	<b>-1,50</b>	FI	<b>-0,30</b>

**Free Haplotypes**  
[i-][i-][i-]

DE001406709038 - CF TL - 643HO05174

SEXED SEMEN *Made in Italy*  
**FOEMINA**  
Sexed **ULTRA 4M**

DGF Baruch

**TYPE TRAITS**PTAT **+1,70** UDC **+2,07** FLC **+1,04**

Stature	0,38
Strength	-0,63
Body Dept	-0,49
Dairy Form	1,02
Rump Angle	-0,17
Thurl Width	1,56
Rear Legs-Side	0,68
Rear Legs-Rear	1,08
Foot Angle	0,26
Feet & Legs Score	1,10
F. Udder Attachment	1,90
Rear Udder Height	3,04
Rear Udder Width	2,21
Udder Cleft	0,55
Udder Depth	2,05
Front Teat Placement	0,33
Rear Teat P. Rear	0,70
Teat Length	-1,11

New

INSEME

# BEDFORD

IT034991375803 - ET TL TV TY - 643HO05543



Inseme Bedford

**MAHOMES**

Eldorado x Milktime

**CASPER**

Isolabella Inseme Beautiful ET - VG86

**HOTROD**

Isolabella Royal Bamby ET - GP84

**TPI**  
**+2615**

**NET MERIT \$**  
**+562**

**CHEESE MERIT \$**  
**+568**

► **PRODUCTION TRAITS** (80% REL)

Milk	% Fat	Fat	% Protein	Protein
<b>+1217 lbs</b>	<b>+0,01</b>	<b>+50</b>	<b>+0,00</b>	<b>+38</b>
K Cas <b>AB</b>		Beta Lact <b>AA</b>		Beta Cas <b>A2A2</b>

► **HEALTH TRAITS**

SCS	<b>+2,73</b>	SCE	<b>+1,90</b>
PL	<b>+3,40</b>	DCE	<b>+2,70</b>
DPR	<b>-1,20</b>	FI	<b>-0,70</b>



Isolabella Beautiful

► **TYPE TRAITS**

PTAT **+1,69** UDC **+1,92** FLC **+0,71**

Stature	0,68
Strength	0,74
Body Dept	0,50
Dairy Form	0,34
Rump Angle	0,00
Thurl Width	1,39
Rear Legs-Side	-0,40
Rear Legs-Rear	0,67
Foot Angle	0,67
Feet & Legs Score	0,85
F. Udder Attachment	> 2,45
Rear Udder Height	> 2,13
Rear Udder Width	> 2,55
Udder Cleft	1,30
Udder Depth	1,40
Front Teat Placement	0,98
Rear Teat P. Rear	1,15
Teat Length	-0,76



DG AZZOPARDI

# BELCANTO

BE000817552326 - TL - 643HO05256



DG Azzopardi Belcanto

**CAPTAIN**

Charl x Sabre

**DISCJOCKEY**

Go-Farm Bomdila

**CHARLEY**

Go-Farm Bolivia ET

**TPI**  
**+3019**

**NET MERIT \$**  
**+1003**

**CHEESE MERIT \$**  
**+1025**

► **PRODUCTION TRAITS** (81% REL)

Milk	% Fat	Fat	% Protein	Protein
<b>+862 lbs</b>	<b>+0,31</b>	<b>+124</b>	<b>+0,10</b>	<b>+55</b>
K Cas <b>AA</b>		Beta Lact <b>AB</b>		Beta Cas <b>A1A2</b>

► **HEALTH TRAITS**

SCS	<b>+2,73</b>	SCE	<b>+1,70</b>
PL	<b>+4,80</b>	DCE	<b>+2,40</b>
DPR	<b>-1,20</b>	FI	<b>-0,20</b>



Glen-D-Haven Oman Biffy-ET

► **TYPE TRAITS**

PTAT **+1,22** UDC **+1,56** FLC **+0,62**

Stature	0,61
Strength	-0,22
Body Dept	-0,14
Dairy Form	0,67
Rump Angle	-0,22
Thurl Width	0,66
Rear Legs-Side	-0,96
Rear Legs-Rear	0,81
Foot Angle	0,22
Feet & Legs Score	0,74
F. Udder Attachment	> 1,78
Rear Udder Height	> 2,44
Rear Udder Width	> 1,79
Udder Cleft	0,16
Udder Depth	1,50
Front Teat Placement	0,23
Rear Teat P. Rear	0,15
Teat Length	-0,86

Free Haplotypes  
[i]-[i]-[i]



GO-FARM

# BELLAGIO

IT019991728989 - 543HO00191 - aAa 432516

 SEXED SEMEN *made in Italy*  
**FOEMINA**  
 Sexed **ULTRA**


Go-Farm Bellagio

**IMAX**

Spring x Mogul

**HOTROD**Go-Farm-Bomba  
MB85**MCCUTCHEN**Go-Farm Brashine  
EX91**TPI****+2661****NET MERIT \$****+598****CHEESE MERIT \$****+606**

## ► PRODUCTION TRAITS (82% REL)

Milk	% Fat	Fat	% Protein	Protein
<b>+918 lbs</b>	<b>+0,11</b>	<b>+66</b>	<b>+0,05</b>	<b>+42</b>
K Cas <b>AA</b>		Beta Lact <b>BB</b>		Beta Cas <b>A2A2</b>

## ► HEALTH TRAITS

SCS	<b>+2,99</b>	SCE	<b>+2,20</b>
PL	<b>+2,30</b>	DCE	<b>+2,00</b>
DPR	<b>-2,00</b>	FI	<b>-1,00</b>

## ► TYPE TRAITS

 PTAT **+1,77** UDC **+2,07** FLC **+0,69**

Stature	>	2,35
Strength	>	1,17
Body Dept	>	0,97
Dairy Form	>	0,77
Rump Angle	>	0,73
Thurl Width	>	2,03
Rear Legs-Side	>	0,36
Rear Legs-Rear	>	1,47
Foot Angle	>	1,27
Feet & Legs Score	>	1,03
F. Udder Attachment	>	2,90
Rear Udder Height	>	2,56
Rear Udder Width	>	2,38
Udder Cleft	>	1,55
Udder Depth	>	3,05
Front Teat Placement	>	1,94
Rear Teat P. Rear	>	1,84
Teat Length	<	-1,73

CRISTELLA  
INSEME

# BERTON

IT019991987840 - 543HO00270 - aAa 234



Cristella Inseme Berton

**BOULEVARD**

Router x Afterburner

**SOUND SYSTEM**

Cristella MB85

**JEDI**

Cristella Mamey B79

**TPI****+2628****NET MERIT \$****+580****CHEESE MERIT \$****+585**

## ► PRODUCTION TRAITS (81% REL)

Milk	% Fat	Fat	% Protein	Protein
<b>+1864 lbs</b>	<b>-0,06</b>	<b>+54</b>	<b>-0,01</b>	<b>+55</b>
K Cas <b>AB</b>		Beta Lact <b>AA</b>		Beta Cas <b>A1A2</b>

## ► HEALTH TRAITS

SCS	<b>+2,70</b>	SCE	<b>+2,80</b>
PL	<b>+2,50</b>	DCE	<b>+2,90</b>
DPR	<b>-2,40</b>	FI	<b>-1,40</b>



Cristella EF - Madre di Berton

## ► TYPE TRAITS

 PTAT **+1,73** UDC **+1,45** FLC **+0,29**

Stature	>	1,60
Strength	>	1,05
Body Dept	>	1,56
Dairy Form	>	2,37
Rump Angle	>	0,87
Thurl Width	>	0,70
Rear Legs-Side	>	0,46
Rear Legs-Rear	>	0,59
Foot Angle	>	0,73
Feet & Legs Score	>	0,61
F. Udder Attachment	>	1,07
Rear Udder Height	>	2,59
Rear Udder Width	>	2,76
Udder Cleft	>	1,60
Udder Depth	>	0,29
Front Teat Placement	>	1,47
Rear Teat P. Rear	>	1,86
Teat Length	<	-0,21



LA PORTEA  
INSEME

# BLANCO

IT103990033871 - 543H000290 - aAa 243

SEXED SEMEN *Made in Italy*  
**FOEMINA**  
Sexed **ULTRA 4M**



La Portea Inseme Blanco

**EINSTEIN**

Topnotch x Duke

**CASPER**

Isolabella Inseme  
Beautiful MB86

**HOTROD**

Isolabella Royal  
Bamby B+84

**TPI**  
**+2820**

**NET MERIT \$**  
**+708**

**CHEESE MERIT \$**  
**+726**

► **PRODUCTION TRAITS** (82% REL)

Milk	% Fat	Fat	% Protein	Protein
<b>+1153 lbs</b>	<b>+0,16</b>	<b>+90</b>	<b>+0,07</b>	<b>+56</b>
K Cas <b>AB</b>		Beta Lact <b>AA</b>		Beta Cas <b>A1A2</b>

► **HEALTH TRAITS**

SCS	<b>+2,69</b>	SCE	<b>+2,60</b>
PL	<b>+2,20</b>	DCE	<b>+2,60</b>
DPR	<b>-1,70</b>	FI	<b>-1,50</b>



Isolabella Beautiful

**Free Haplotypes**  
[i]-[i]-[i]-[i]

► **TYPE TRAITS**

PTAT **+1,98** UDC **+2,25** FLC **-0,11**

Stature	1,58
Strength	1,15
Body Dept	1,11
Dairy Form	1,23
Rump Angle	0,61
Thurl Width	2,18
Rear Legs-Side	-0,59
Rear Legs-Rear	-0,29
Foot Angle	0,40
Feet & Legs Score	0,38
F. Udder Attachment	2,33
Rear Udder Height	2,60
Rear Udder Width	3,64
Udder Cleft	2,20
Udder Depth	1,62
Front Teat Placement	1,31
Rear Teat P. Rear	1,85
Teat Length	0,08

-3 0 +0,5 +1 +1,5

DG

# BOPPE

DE001406512669 - 643H005159

SEXED SEMEN *Made in Italy*  
**FOEMINA**  
Sexed **ULTRA 4M**



Ms Dg-TM Delta Blake-ET

**CAPTAIN**

Charl x Sabre

**CHARL**

DG Brenna ET

**FLAGSHIP**

MS DG-TM Flagship  
Buoy-ET

**TPI**  
**+3083**

**NET MERIT \$**  
**+1166**

**CHEESE MERIT \$**  
**1174**

► **PRODUCTION TRAITS** (81% REL)

Milk	% Fat	Fat	% Protein	Protein
<b>+2104 lbs</b>	<b>+0,18</b>	<b>+134</b>	<b>+0,04</b>	<b>+78</b>
K Cas <b>AE</b>		Beta Lact <b>AA</b>		Beta Cas <b>A1A2</b>

► **HEALTH TRAITS**

SCS	<b>+2,98</b>	SCE	<b>+1,50</b>
PL	<b>+3,60</b>	DCE	<b>+2,10</b>
DPR	<b>-1,80</b>	FI	<b>-0,80</b>

► **TYPE TRAITS**

PTAT **+1,18** UDC **+1,02** FLC **+0,52**

Stature	-0,93
Strength	-1,47
Body Dept	-0,63
Dairy Form	2,09
Rump Angle	-0,91
Thurl Width	0,48
Rear Legs-Side	0,34
Rear Legs-Rear	0,09
Foot Angle	-1,11
Feet & Legs Score	0,45
F. Udder Attachment	0,36
Rear Udder Height	1,97
Rear Udder Width	1,65
Udder Cleft	-0,19
Udder Depth	-0,31
Front Teat Placement	0,05
Rear Teat P. Rear	0,10
Teat Length	-1,07

-3 0 +0,5 +1 +1,5

**Free Haplotypes**  
[i]-[i]-[i]-[i]



GO-FARM  
INSEME**BRABUS****ALTAWHEELHOUSE**

Pursuit x Duke

**GUARANTEE**Go-Farm Biga  
ET MB87**ALTAHOTROD**Go-Farm Bomba  
ET MB85**TPI****+2863****NET MERIT \$****+912****CHEESE MERIT \$****+930****PRODUCTION TRAITS (81% REL)**

Milk	% Fat	Fat	% Protein	Protein
<b>+950 lbs</b>	<b>+0,13</b>	<b>+75</b>	<b>+0,07</b>	<b>+50</b>
K Cas <b>AB</b>		Beta Lact <b>AB</b>		Beta Cas <b>A2A2</b>

**HEALTH TRAITS**

SCS	<b>+2,68</b>	SCE	<b>+1,90</b>
PL	<b>+5,60</b>	DCE	<b>+1,50</b>
DPR	<b>+0,00</b>	FI	<b>+0,90</b>

**Free Haplotypes**  
[i-][i-][i-]

IT019992289224 - 543H000310

SEXED SEMEN *Made in Italy*  
**FOEMINA**  
Sexed **ULTRA 4M**

Go-Farm Inseme Brabus

**TYPE TRAITS**PTAT **+1,24** UDC **+1,64** FLC **+0,03**

Stature				<b>0,89</b>
Strength				<b>0,15</b>
Body Dept				<b>0,05</b>
Dairy Form				<b>1,08</b>
Rump Angle				<b>0,22</b>
Thurl Width				<b>1,34</b>
Rear Legs-Side				<b>0,97</b>
Rear Legs-Rear				<b>0,10</b>
Foot Angle				<b>0,35</b>
Feet & Legs Score				<b>0,27</b>
F. Udder Attachment				<b>1,98</b>
Rear Udder Height				<b>1,56</b>
Rear Udder Width				<b>2,34</b>
Udder Cleft				<b>1,10</b>
Udder Depth				<b>1,91</b>
Front Teat Placement				<b>1,34</b>
Rear Teat P. Rear				<b>1,24</b>
Teat Length				<b>-1,65</b>

CASCINA GIOBBI  
INSEME**BROLY****SENTIMENT**

Acura x Spectre

**DEREK**Cascina Giobbi  
Diamante - VG85**HOTLINE**Cascina Giobbi  
Hotline Bolivia**TPI**  
**+2760****NET MERIT \$**  
**+648****CHEESE MERIT \$**  
**+660****PRODUCTION TRAITS (80% REL)**

Milk	% Fat	Fat	% Protein	Protein
<b>+1365 lbs</b>	<b>+0,08</b>	<b>+75</b>	<b>+0,06</b>	<b>+59</b>
K Cas <b>BB</b>		Beta Lact <b>AB</b>		Beta Cas <b>A2A2</b>

**HEALTH TRAITS**

SCS	<b>+2,92</b>	SCE	<b>+2,40</b>
PL	<b>+2,20</b>	DCE	<b>+2,50</b>
DPR	<b>-1,10</b>	FI	<b>-0,30</b>

IT004992481719 - TL TM TV TY - 543H000313



Cascina Giobbi Inseme Broly

**TYPE TRAITS**PTAT **+1,96** UDC **+1,16** FLC **+0,97**

Stature				<b>2,34</b>
Strength				<b>1,79</b>
Body Dept				<b>1,87</b>
Dairy Form				<b>1,93</b>
Rump Angle				<b>-0,01</b>
Thurl Width				<b>1,57</b>
Rear Legs-Side				<b>0,08</b>
Rear Legs-Rear				<b>1,44</b>
Foot Angle				<b>1,67</b>
Feet & Legs Score				<b>1,35</b>
F. Udder Attachment				<b>1,35</b>
Rear Udder Height				<b>1,71</b>
Rear Udder Width				<b>2,38</b>
Udder Cleft				<b>1,42</b>
Udder Depth				<b>0,96</b>
Front Teat Placement				<b>1,65</b>
Rear Teat P. Rear				<b>1,66</b>
Teat Length				<b>-0,21</b>





New

DPF

# BRISTOL

DE001604459503 - CF TL - 643HO05545

SEXED SEMEN *Made in Italy*  
**FOEMINA**  
Sexed **ULTRA 4M**



**CAPTAIN**

**IMAX**

**SILVER**

Charl x Sabre

DGF Brenda ET

DKR Baccardi ET

**TPI**  
**+3073**

**NET MERIT \$**  
**+968**

**CHEESE MERIT \$**  
**+974**

► **PRODUCTION TRAITS** (81% REL)

Milk	% Fat	Fat	% Protein	Protein
<b>+1753 lbs</b>	<b>+0,21</b>	<b>+130</b>	<b>+0,04</b>	<b>+67</b>
K Cas <b>AA</b>		Beta Lact <b>AA</b>		Beta Cas <b>A2A2</b>

► **HEALTH TRAITS**

SCS	<b>+3,07</b>	SCE	<b>+2,00</b>
PL	<b>+2,00</b>	DCE	<b>+2,50</b>
DPR	<b>-2,00</b>	FI	<b>-1,00</b>

► **TYPE TRAITS**

PTAT **+2,51** UDC **+2,43** FLC **+0,87**

Stature	1,54
Strength	0,54
Body Dept	0,93
Dairy Form	2,36
Rump Angle	-0,67
Thurl Width	2,75
Rear Legs-Side	1,35
Rear Legs-Rear	1,10
Foot Angle	0,37
Feet & Legs Score	1,24
F. Udder Attachment	2,30
Rear Udder Height	3,73
Rear Udder Width	3,50
Udder Cleft	1,18
Udder Depth	1,92
Front Teat Placement	0,88
Rear Teat P. Rear	1,02
Teat Length	-0,79



ISOLABELLA  
INSEME

# BRUNELLESCHI

IT001991277819 - 543HO00265 - aAa 243

SEXED SEMEN *Made in Italy*  
**FOEMINA**  
Sexed **ULTRA 4M**



**DATELINE**

**SOUND SYSTEM**

**HOTROD**

Hotline x Montross

Isolabella Cicala  
MB86

Isolabella Royal  
Bamby B+84

**TPI**  
**+2636**

**NET MERIT \$**  
**+568**

**CHEESE MERIT \$**  
**+576**

► **PRODUCTION TRAITS** (82% REL)

Milk	% Fat	Fat	% Protein	Protein
<b>+1622 lbs</b>	<b>+0,00</b>	<b>+63</b>	<b>+0,02</b>	<b>+56</b>
K Cas <b>AA</b>		Beta Lact <b>AB</b>		Beta Cas <b>A2A2</b>

► **HEALTH TRAITS**

SCS	<b>+2,78</b>	SCE	<b>+2,10</b>
PL	<b>+0,80</b>	DCE	<b>+1,40</b>
DPR	<b>-1,90</b>	FI	<b>-1,50</b>

► **TYPE TRAITS**

PTAT **+1,79** UDC **+1,99** FLC **-0,62**

Stature	2,40
Strength	0,78
Body Dept	1,16
Dairy Form	2,18
Rump Angle	1,82
Thurl Width	1,09
Rear Legs-Side	-0,77
Rear Legs-Rear	-0,08
Foot Angle	1,00
Feet & Legs Score	-0,11
F. Udder Attachment	2,48
Rear Udder Height	3,07
Rear Udder Width	2,90
Udder Cleft	1,21
Udder Depth	1,78
Front Teat Placement	1,16
Rear Teat P. Rear	1,18
Teat Length	-0,04

Free Haplotypes  
[i]-[i]-[i]



**Polled**

DE001505261050 - CF TL PC - 643HO05263

SEXED SEMEN *Made in Italy*  
**FOEMINA**  
Sexed **ULTRA 4M**

DG

# BUTLER P



DG Butler

**FOREMAN**

**SIMON-P**

**GYMNAST**

Freemax x Rubicon

RHO 18596 ET

RHO Bailey ET- VG87

<b>TPI</b> <b>+2754</b>	<b>NET MERIT \$</b> <b>+765</b>	<b>CHEESE MERIT \$</b> <b>+774</b>
----------------------------	------------------------------------	---------------------------------------

► **PRODUCTION TRAITS** (79% REL)

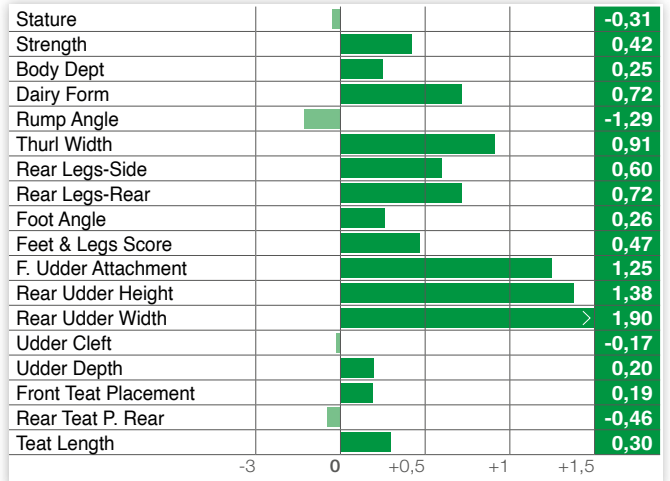
Milk <b>+1556 lbs</b>	% Fat <b>+0,01</b>	Fat <b>+62</b>	% Protein <b>+0,04</b>	Protein <b>+61</b>
K Cas <b>AB</b>		Beta Lact <b>AB</b>		Beta Cas <b>A2A2</b>

► **HEALTH TRAITS**

SCS	<b>+2,92</b>	SCE	<b>+1,70</b>
PL	<b>+3,90</b>	DCE	<b>+1,70</b>
DPR	<b>-1,10</b>	FI	<b>+0,20</b>

► **TYPE TRAITS**

PTAT **+1,17** UDC **+1,09** FLC **+0,61**



**Free Haplotypes**  
[i-][i-][i-]



IT019991894420 - 543HO00247 - aAa 234

SEXED SEMEN *Made in Italy*  
**FOEMINA**  
Sexed **ULTRA 4M**

IDEVRA  
ROYAL INSEME

# CARLOMAGNO



Idevra Royal Inseme Carlomagno

**BRAMANTE**

**TABASCO**

**SUPERSHOT**

Sound System x  
Hotrod

Idevra Tabasco  
Roberto MB87

Idevra Royal Carlina  
B+81

<b>TPI</b> <b>+2652</b>	<b>NET MERIT \$</b> <b>+639</b>	<b>CHEESE MERIT \$</b> <b>+654</b>
----------------------------	------------------------------------	---------------------------------------

► **PRODUCTION TRAITS** (81% REL)

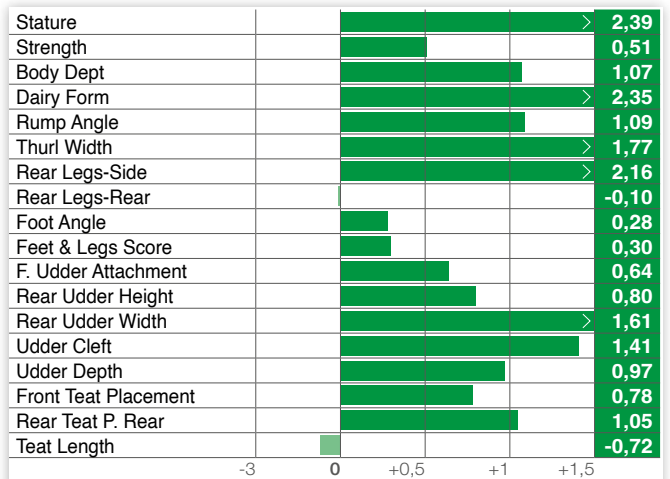
Milk <b>+1552 lbs</b>	% Fat <b>-0,01</b>	Fat <b>+56</b>	% Protein <b>+0,07</b>	Protein <b>+68</b>
K Cas <b>BE</b>		Beta Lact <b>AA</b>		Beta Cas <b>A1A2</b>

► **HEALTH TRAITS**

SCS	<b>+2,85</b>	SCE	<b>+2,60</b>
PL	<b>+3,40</b>	DCE	<b>+2,50</b>
DPR	<b>-1,60</b>	FI	<b>-0,90</b>

► **TYPE TRAITS**

PTAT **+1,28** UDC **+0,53** FLC **-0,40**



**Free Haplotypes**  
[i-][i-][i-]



Idevra Tabasco



# DG CARTIER

DE001406512947 - 643H005169



**CAPTAIN** x **KENNEDY** x **JEDI**  
 Charl x Sabre x DG Chrysta ET x Veelhorst Chrystal ET

**TPI** +3023    **NET MERIT \$** +1127    **CHEESE MERIT \$** +1141

► **PRODUCTION TRAITS (81% REL)**

Milk	% Fat	Fat	% Protein	Protein
<b>+1197 lbs</b>	<b>+0,20</b>	<b>+103</b>	<b>+0,07</b>	<b>+59</b>
K Cas <b>AB</b>		Beta Lact <b>AA</b>		Beta Cas <b>A1A2</b>

► **HEALTH TRAITS**

SCS	<b>+2,91</b>	SCE	<b>+1,50</b>
PL	<b>+6,40</b>	DCE	<b>+1,60</b>
DPR	<b>+1,80</b>	FI	<b>+2,10</b>



Free Haplotypes



► **TYPE TRAITS**

PTAT **+0,42**    UDC **+1,00**    FLC **+0,13**

Stature	-0,89
Strength	-1,34
Body Dept	-1,27
Dairy Form	0,55
Rump Angle	0,03
Thurl Width	0,31
Rear Legs-Side	0,37
Rear Legs-Rear	-0,18
Foot Angle	-1,07
Feet & Legs Score	0,05
F. Udder Attachment	0,66
Rear Udder Height	1,30
Rear Udder Width	0,98
Udder Cleft	-0,17
Udder Depth	0,70
Front Teat Placement	-0,08
Rear Teat P. Rear	-0,03
Teat Length	-0,57

# DGF CROCODILE

DE001406512921 - 643H005168



**CAPTAIN** x **CHARL** x **MONTANA**  
 Charl x Sabre x DGF Clem ET x Eba Martha ET

**TPI** +3026    **NET MERIT \$** +1097    **CHEESE MERIT \$** +1113

► **PRODUCTION TRAITS (81% REL)**

Milk	% Fat	Fat	% Protein	Protein
<b>+1280 lbs</b>	<b>+0,20</b>	<b>+109</b>	<b>+0,05</b>	<b>+54</b>
K Cas <b>AB</b>		Beta Lact <b>AA</b>		Beta Cas <b>A2A2</b>

► **HEALTH TRAITS**

SCS	<b>+2,64</b>	SCE	<b>+1,50</b>
PL	<b>+6,50</b>	DCE	<b>+1,80</b>
DPR	<b>+0,50</b>	FI	<b>+1,00</b>

► **TYPE TRAITS**

PTAT **+0,71**    UDC **+1,11**    FLC **+0,33**

Stature	-0,63
Strength	-1,13
Body Dept	-1,11
Dairy Form	-0,02
Rump Angle	0,71
Thurl Width	-0,06
Rear Legs-Side	0,14
Rear Legs-Rear	-0,15
Foot Angle	-0,79
Feet & Legs Score	0,33
F. Udder Attachment	1,25
Rear Udder Height	1,49
Rear Udder Width	0,62
Udder Cleft	-0,04
Udder Depth	1,14
Front Teat Placement	-0,07
Rear Teat P. Rear	-0,24
Teat Length	-0,76

Free Haplotypes



DG

# DELAINE

**CAPTAIN**

Charl x Sabre

**CRIMSON**

Gen Durkje ET

**CHARLEY**

DG Ariana ET - GP84

**TPI**  
**+3032**
**NET MERIT \$**  
**+1119**
**CHEESE MERIT \$**  
**+1131**
**PRODUCTION TRAITS (81% REL)**

Milk	% Fat	Fat	% Protein	Protein
<b>+1511 lbs</b>	<b>+0,17</b>	<b>+109</b>	<b>+0,05</b>	<b>+61</b>
K Cas <b>AB</b>		Beta Lact <b>AA</b>		Beta Cas <b>A2A2</b>

**HEALTH TRAITS**

SCS	<b>+2,80</b>	SCE	<b>+1,80</b>
PL	<b>+6,20</b>	DCE	<b>+1,80</b>
DPR	<b>-0,50</b>	FI	<b>+0,20</b>

**Free Haplotypes**  


Gen Durkje

DE001406709032 - CF TL - 643HO05175

 SEXED SEMEN *Made in Italy*  
**FOEMINA**  
 Sexed **ULTRA 4M**


DG Delaine

**TYPE TRAITS**
**PTAT +0,75 UDC +1,53 FLC +0,51**

Stature					<b>-0,28</b>
Strength					<b>-1,46</b>
Body Dept					<b>-1,31</b>
Dairy Form					<b>0,69</b>
Rump Angle					<b>0,27</b>
Thurl Width					<b>-0,17</b>
Rear Legs-Side					<b>-0,34</b>
Rear Legs-Rear					<b>0,25</b>
Foot Angle					<b>-0,14</b>
Feet & Legs Score					<b>0,51</b>
F. Udder Attachment					<b>1,69</b>
Rear Udder Height					<b>1,93</b>
Rear Udder Width					<b>1,15</b>
Udder Cleft					<b>-0,23</b>
Udder Depth					<b>2,00</b>
Front Teat Placement					<b>-0,26</b>
Rear Teat P. Rear					<b>-0,32</b>
Teat Length					<b>-0,54</b>

-3 0 +0,5 +1 +1,5

ISOLABELLA  
INSEME

# DISTEFANO

**HOTHAND**

Hotline x Montross

**TOOHOT**

Go-Farm Island

**SUPERMAN**

Kns Inka MB85

**TPI**  
**+2810**
**NET MERIT \$**  
**+742**
**CHEESE MERIT \$**  
**+761**
**PRODUCTION TRAITS (81% REL)**

Milk	% Fat	Fat	% Protein	Protein
<b>+1061 lbs</b>	<b>+0,11</b>	<b>+72</b>	<b>+0,07</b>	<b>+53</b>
K Cas <b>AA</b>		Beta Lact <b>AB</b>		Beta Cas <b>A2A2</b>

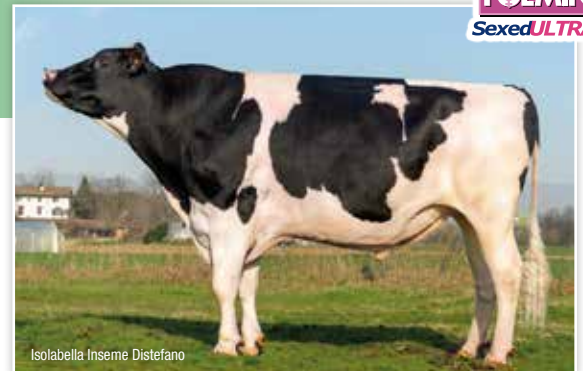
**HEALTH TRAITS**

SCS	<b>+2,68</b>	SCE	<b>+1,70</b>
PL	<b>+3,70</b>	DCE	<b>+2,20</b>
DPR	<b>-1,20</b>	FI	<b>-0,50</b>

**Free Haplotypes**  


GoFarm TooHot-Dam of Indro and Distefano

IT001991277781 - 543HO00252 - aAa 432

 SEXED SEMEN *Made in Italy*  
**FOEMINA**  
 Sexed **ULTRA 4M**


Isolabella Inseme Distefano

**TYPE TRAITS**
**PTAT +1,72 UDC +2,03 FLC +0,16**

Stature					<b>2,02</b>
Strength					<b>0,89</b>
Body Dept					<b>0,88</b>
Dairy Form					<b>0,95</b>
Rump Angle					<b>0,93</b>
Thurl Width					<b>0,35</b>
Rear Legs-Side					<b>-0,19</b>
Rear Legs-Rear					<b>0,80</b>
Foot Angle					<b>1,28</b>
Feet & Legs Score					<b>0,46</b>
F. Udder Attachment					<b>2,61</b>
Rear Udder Height					<b>2,65</b>
Rear Udder Width					<b>2,40</b>
Udder Cleft					<b>1,54</b>
Udder Depth					<b>2,47</b>
Front Teat Placement					<b>0,62</b>
Rear Teat P. Rear					<b>0,66</b>
Teat Length					<b>-0,10</b>

-3 0 +0,5 +1 +1,5



INSEME

## ELETTO

IT024990682547 - 543HO00261 - aAa 234

SEXED SEMEN *made in Italy*  
**FOEMINA**  
Sexed **ULTRA**

## GIORDANO

Perseus x Rodanas

## FLAGSHIP

Flagship Bomb Eliza  
MB85

## BOMBERO

Royal Bombeud  
Mattarella MB89TPI  
**+2727**NET MERIT \$  
**+668**CHEESE MERIT \$  
**+695**

## ► PRODUCTION TRAITS (81% REL)

Milk	% Fat	Fat	% Protein	Protein
<b>-81 lbs</b>	<b>+0,25</b>	<b>+67</b>	<b>+0,12</b>	<b>+30</b>
K Cas <b>BB</b>		Beta Lact <b>AA</b>		Beta Cas <b>A1A2</b>

## ► HEALTH TRAITS

SCS	<b>+2,59</b>	SCE	<b>+2,00</b>
PL	<b>+4,50</b>	DCE	<b>+2,10</b>
DPR	<b>+2,10</b>	FI	<b>+2,00</b>

Free Haplotypes  
[i-][i-][i-]

## ► TYPE TRAITS

PTAT **+0,85** UDC **+1,74** FLC **-0,21**

Stature				<b>0,62</b>
Strength				<b>0,35</b>
Body Dept				<b>0,19</b>
Dairy Form				<b>0,21</b>
Rump Angle				<b>-1,02</b>
Thurl Width				<b>1,20</b>
Rear Legs-Side				<b>-1,39</b>
Rear Legs-Rear				<b>-0,07</b>
Foot Angle				<b>1,22</b>
Feet & Legs Score				<b>-0,09</b>
F. Udder Attachment				<b>1,48</b>
Rear Udder Height				<b>&gt; 2,08</b>
Rear Udder Width				<b>&gt; 1,84</b>
Udder Cleft				<b>&gt; 1,78</b>
Udder Depth				<b>&gt; 1,66</b>
Front Teat Placement				<b>&gt; 1,21</b>
Rear Teat P. Rear				<b>&gt; 1,61</b>
Teat Length				<b>0,18</b>

**Polled**

ISOLABELLA  
INSEME

# ERIK P

IT001991454452 - 543HO00303



## HEART

Renegade x Frazzled

## HOTSPOT

Vogue Hotspot  
Emma-P

## DUKE

Silverridge Duke  
Elsa-P MB87TPI  
**+2754**NET MERIT \$  
**+656**CHEESE MERIT \$  
**+674**

## ► PRODUCTION TRAITS (81% REL)

Milk	% Fat	Fat	% Protein	Protein
<b>+920 lbs</b>	<b>+0,14</b>	<b>+75</b>	<b>+0,08</b>	<b>+53</b>
K Cas <b>AB</b>		Beta Lact <b>AB</b>		Beta Cas <b>A1A1</b>

## ► HEALTH TRAITS

SCS	<b>+2,79</b>	SCE	<b>+2,60</b>
PL	<b>+2,50</b>	DCE	<b>+2,30</b>
DPR	<b>+0,60</b>	FI	<b>+0,80</b>

Free Haplotypes  
[i-][i-][i-]

## ► TYPE TRAITS

PTAT **+1,19** UDC **+1,17** FLC **+0,06**

Stature				<b>&gt; 1,68</b>
Strength				<b>0,99</b>
Body Dept				<b>0,56</b>
Dairy Form				<b>0,49</b>
Rump Angle				<b>1,21</b>
Thurl Width				<b>0,80</b>
Rear Legs-Side				<b>-0,63</b>
Rear Legs-Rear				<b>0,51</b>
Foot Angle				<b>0,87</b>
Feet & Legs Score				<b>0,36</b>
F. Udder Attachment				<b>&gt; 1,77</b>
Rear Udder Height				<b>&gt; 1,93</b>
Rear Udder Width				<b>&gt; 1,80</b>
Udder Cleft				<b>-0,03</b>
Udder Depth				<b>&gt; 1,71</b>
Front Teat Placement				<b>-0,12</b>
Rear Teat P. Rear				<b>-0,11</b>
Teat Length				<b>0,98</b>

GO-FARM  
INSEME

## FABIUS

## ZAZZLE

Marius x Topshot

## LAWSON

Progenesis Flora 3902

## FRAZZLED

Welcome Frazzled  
FanfareTPI  
**+2946**NET MERIT \$  
**+908**CHEESE MERIT \$  
**+934**

## ► PRODUCTION TRAITS (81% REL)

Milk	% Fat	Fat	% Protein	Protein
<b>+615 lbs</b>	<b>+0,26</b>	<b>+97</b>	<b>+0,11</b>	<b>+52</b>
K Cas <b>BB</b>		Beta Lact <b>AA</b>		Beta Cas <b>A1A1</b>

## ► HEALTH TRAITS

SCS	<b>+2,65</b>	SCE	<b>+1,90</b>
PL	<b>+4,70</b>	DCE	<b>+1,60</b>
DPR	<b>-0,20</b>	FI	<b>+0,30</b>



IT019992239603 - 543HO00294 - aAa 243

SEXED SEMEN *made in Italy*  
**FOEMINA**  
Sexed **ULTRA 4M**

## ► TYPE TRAITS

PTAT **+1,38** UDC **+1,37** FLC **+0,49**

Stature	1,33
Strength	0,52
Body Dept	0,20
Dairy Form	0,61
Rump Angle	0,42
Thurl Width	1,33
Rear Legs-Side	-0,13
Rear Legs-Rear	0,22
Foot Angle	0,98
Feet & Legs Score	0,87
F. Udder Attachment	> 2,13
Rear Udder Height	> 1,69
Rear Udder Width	> 1,69
Udder Cleft	> 0,03
Udder Depth	> 1,81
Front Teat Placement	> 0,72
Rear Teat P. Rear	> 0,13
Teat Length	> 0,06

IDEVRA RYL  
INSEME

## GHIBERTI

## BRAMANTE

Sound System x  
Hotrod

## HOTLINE

Idevra Royal Granata  
MB88

## RODANAS

Idevra Royal Grinta  
MB88TPI  
**+2669**NET MERIT \$  
**+556**CHEESE MERIT \$  
**+574**

## ► PRODUCTION TRAITS (81% REL)

Milk	% Fat	Fat	% Protein	Protein
<b>+565 lbs</b>	<b>+0,19</b>	<b>+76</b>	<b>+0,08</b>	<b>+40</b>
K Cas <b>AA</b>		Beta Lact <b>AB</b>		Beta Cas <b>A2A2</b>

## ► HEALTH TRAITS

SCS	<b>+2,74</b>	SCE	<b>+1,70</b>
PL	<b>+1,20</b>	DCE	<b>+2,00</b>
DPR	<b>-2,60</b>	FI	<b>-2,00</b>

IT019991894454 - 543HO00244 - aAa 234



## ► TYPE TRAITS

PTAT **+2,09** UDC **+2,04** FLC **+1,03**

Stature	> 2,65
Strength	0,36
Body Dept	0,69
Dairy Form	> 1,59
Rump Angle	0,81
Thurl Width	0,78
Rear Legs-Side	-0,37
Rear Legs-Rear	> 1,57
Foot Angle	> 2,32
Feet & Legs Score	1,44
F. Udder Attachment	> 2,80
Rear Udder Height	> 2,45
Rear Udder Width	> 2,37
Udder Cleft	> 2,32
Udder Depth	> 3,03
Front Teat Placement	> 2,34
Rear Teat P. Rear	> 2,77
Teat Length	-1,68

Free Haplotypes  
[i]-[i]-[i]

**New**

ISOLABELLA  
INSEME

# GRIFONE

IT001991497906 -543H000309

SEXED SEMEN *Made in Italy*  
**FOEMINA**  
Sexed **ULTRA 4M**



**MACHONE** × **SOUNDCLOUD** × **FORTUNE**  
Milktime x Romero × Westcoast SNDCLD GRAC6042 × Westcoast Fortune GRC4004 GP80

**TPI** +2826      **NET MERIT \$** +628      **CHEESE MERIT \$** +653

▶ PRODUCTION TRAITS (81% REL)				
Milk	% Fat	Fat	% Protein	Protein
<b>+881 lbs</b>	<b>+0,06</b>	<b>+50</b>	<b>+0,09</b>	<b>+52</b>
K Cas <b>BE</b>		Beta Lact <b>AA</b>		Beta Cas <b>A1A1</b>

▶ HEALTH TRAITS			
SCS	<b>+2,47</b>	SCE	<b>+2,60</b>
PL	<b>+4,20</b>	DCE	<b>+2,40</b>
DPR	<b>+0,80</b>	FI	<b>+0,80</b>

▶ TYPE TRAITS					
PTAT	<b>+2,36</b>	UDC	<b>+2,11</b>	FLC	<b>+0,65</b>

Stature	>	2,14
Strength	>	1,57
Body Dept	>	1,45
Dairy Form	>	1,29
Rump Angle	<	-0,53
Thurl Width	>	2,47
Rear Legs-Side	<	-0,75
Rear Legs-Rear	>	1,41
Foot Angle	>	1,28
Feet & Legs Score	>	0,96
F. Udder Attachment	>	2,39
Rear Udder Height	>	2,61
Rear Udder Width	>	2,67
Udder Cleft	>	2,60
Udder Depth	>	2,31
Front Teat Placement	>	1,77
Rear Teat P. Rear	>	2,60
Teat Length	<	-0,44

Free **Haplotypes**  
[i-][i-][i-]

**New**

ISOLABELLA

# GTA

IT001991497907 - 643H000308

SEXED SEMEN *Made in Italy*  
**FOEMINA**  
Sexed **ULTRA 4M**



**MACHONE** × **SOUNDCLOUD** × **FORTUNE**  
Milktime x Romero × Westcoast SNDCLD GRAC6042 × Westcoast Fortune GRC4004 GP80

**TPI** +2789      **NET MERIT \$** +697      **CHEESE MERIT \$** +718

▶ PRODUCTION TRAITS (81% REL)				
Milk	% Fat	Fat	% Protein	Protein
<b>+1162 lbs</b>	<b>+0,05</b>	<b>+60</b>	<b>+0,07</b>	<b>+56</b>
K Cas <b>AA</b>		Beta Lact <b>AA</b>		Beta Cas <b>A1A2</b>

▶ HEALTH TRAITS			
SCS	<b>+2,55</b>	SCE	<b>+2,20</b>
PL	<b>+3,30</b>	DCE	<b>+2,00</b>
DPR	<b>-0,70</b>	FI	<b>-0,10</b>

▶ TYPE TRAITS					
PTAT	<b>+1,90</b>	UDC	<b>+1,57</b>	FLC	<b>+0,51</b>

Stature	>	2,18
Strength	>	1,54
Body Dept	>	1,42
Dairy Form	>	1,48
Rump Angle	<	0,34
Thurl Width	>	1,77
Rear Legs-Side	<	-1,05
Rear Legs-Rear	>	1,20
Foot Angle	>	1,28
Feet & Legs Score	>	0,86
F. Udder Attachment	>	2,05
Rear Udder Height	>	2,20
Rear Udder Width	>	2,17
Udder Cleft	>	1,51
Udder Depth	>	1,82
Front Teat Placement	>	1,19
Rear Teat P. Rear	>	1,50
Teat Length	<	-0,67

Free **Haplotypes**  
[i-][i-][i-]



S.J.K.

# HADRIAN

NL000949971784 - TL - 643HO05255



S.J.K. Hadrian

**CAPTAIN**

Charl x Sabre

**CHARL**

SJK 0706 ET - G79

**DELTA**

A-L-H Delta Helania-ET

**TPI**  
**+3075**

**NET MERIT \$**  
**+1152**

**CHEESE MERIT \$**  
**+1157**

► **PRODUCTION TRAITS** (81% REL)

Milk <b>+1856 lbs</b>	% Fat <b>+0,20</b>	Fat <b>+131</b>	% Protein <b>+0,02</b>	Protein <b>+64</b>
K Cas <b>AB</b>		Beta Lact <b>AA</b>		Beta Cas <b>A2A2</b>

► **HEALTH TRAITS**

SCS	<b>+2,96</b>	SCE	<b>+1,60</b>
PL	<b>+5,00</b>	DCE	<b>+1,60</b>
DPR	<b>-0,60</b>	FI	<b>+0,60</b>

Free **Haplotypes**  
i-i-i-i



Cookiecutter Mom Halo-ET

► **TYPE TRAITS**

PTAT **+0,94** UDC **+0,95** FLC **+0,05**

Stature					0,06
Strength					-1,16
Body Dept					-0,31
Dairy Form					2,23
Rump Angle					0,81
Thurl Width					0,87
Rear Legs-Side					1,45
Rear Legs-Rear					-0,39
Foot Angle					-1,33
Feet & Legs Score					0,35
F. Udder Attachment					0,48
Rear Udder Height					1,88
Rear Udder Width					1,75
Udder Cleft					0,26
Udder Depth					0,22
Front Teat Placement					0,01
Rear Teat P. Rear					0,09
Teat Length					-1,41

**Polled**

DG

# HEREWARD P

NL000634721254 - TL PC - 643HO05161



DG Hereward

**CAPTAIN**

Charl x Sabre

**CHARL**

Gen Heidi ET

**ANSWER-P**

Wilder Hit ET - GP82

**TPI**  
**+3017**

**NET MERIT \$**  
**+974**

**CHEESE MERIT \$**  
**+969**

► **PRODUCTION TRAITS** (81% REL)

Milk <b>+2543 lbs</b>	% Fat <b>+0,06</b>	Fat <b>+115</b>	% Protein <b>-0,02</b>	Protein <b>+72</b>
K Cas <b>AB</b>		Beta Lact <b>AA</b>		Beta Cas <b>A2A2</b>

► **HEALTH TRAITS**

SCS	<b>+3,11</b>	SCE	<b>+1,60</b>
PL	<b>+3,50</b>	DCE	<b>+2,10</b>
DPR	<b>-1,60</b>	FI	<b>-0,30</b>

Free **Haplotypes**  
i-i-i-i



Wil Hira 133 VG85 4th mother

► **TYPE TRAITS**

PTAT **+1,77** UDC **+1,88** FLC **+0,63**

Stature					0,15
Strength					-0,54
Body Dept					-0,14
Dairy Form					1,72
Rump Angle					0,21
Thurl Width					0,98
Rear Legs-Side					0,24
Rear Legs-Rear					0,33
Foot Angle					-0,56
Feet & Legs Score					0,78
F. Udder Attachment					1,50
Rear Udder Height					3,18
Rear Udder Width					2,77
Udder Cleft					0,43
Udder Depth					0,80
Front Teat Placement					-0,11
Rear Teat P. Rear					0,23
Teat Length					-0,92

DG **HORIZON**

NL000634724222 - TL - 643HO05542



**CAPTAIN** X **CHARL** X **BOURBON**  
 Charl x Sabre DG Hailey ET Peak Hang10 20528-ET

**TPI** +3072 **NET MERIT \$** +1073 **CHEESE MERIT \$** +1086



Lookout Pesce Epic Hue

► **PRODUCTION TRAITS** (81% REL)

Milk	% Fat	Fat	% Protein	Protein
<b>+1513 lbs</b>	<b>+0,26</b>	<b>+135</b>	<b>+0,07</b>	<b>+67</b>
K Cas <b>AB</b>		Beta Lact <b>AA</b>		Beta Cas <b>A2A2</b>

► **HEALTH TRAITS**

SCS	<b>+2,90</b>	SCE	<b>+1,70</b>
PL	<b>+3,70</b>	DCE	<b>+2,20</b>
DPR	<b>+0,20</b>	FI	<b>+1,00</b>

► **TYPE TRAITS**

PTAT **+0,70** UDC **+1,07** FLC **+0,15**

Stature					<b>-0,06</b>
Strength					<b>-0,54</b>
Body Dept					<b>-0,21</b>
Dairy Form					<b>1,22</b>
Rump Angle					<b>-0,74</b>
Thurl Width					<b>1,18</b>
Rear Legs-Side					<b>0,55</b>
Rear Legs-Rear					<b>0,08</b>
Foot Angle					<b>-1,18</b>
Feet & Legs Score					<b>0,25</b>
F. Udder Attachment					<b>0,95</b>
Rear Udder Height					<b>1,72</b>
Rear Udder Width					<b>1,54</b>
Udder Cleft					<b>-0,03</b>
Udder Depth					<b>0,52</b>
Front Teat Placement					<b>0,14</b>
Rear Teat P. Rear					<b>0,15</b>
Teat Length					<b>-0,77</b>



RIOZZO INSEME **INDRO**

IT015990518306 - 543HO00245 - aAa 234



**HOTHAND** X **TOOHOT** X **SUPERMAN**  
 Hotline x Montross Go-Farm Island KNS Inka MB85

**TPI** +2614 **NET MERIT \$** +483 **CHEESE MERIT \$** +490



Riozzo Inseme Indro

► **PRODUCTION TRAITS** (81% REL)

Milk	% Fat	Fat	% Protein	Protein
<b>+1369 lbs</b>	<b>+0,01</b>	<b>+56</b>	<b>+0,04</b>	<b>+54</b>
K Cas <b>AE</b>		Beta Lact <b>AB</b>		Beta Cas <b>A1A2</b>

► **HEALTH TRAITS**

SCS	<b>+2,98</b>	SCE	<b>+2,10</b>
PL	<b>+0,60</b>	DCE	<b>+2,40</b>
DPR	<b>-2,40</b>	FI	<b>-1,40</b>

► **TYPE TRAITS**

PTAT **+1,95** UDC **+2,23** FLC **+0,23**

Stature					<b>2,05</b>
Strength					<b>1,16</b>
Body Dept					<b>1,24</b>
Dairy Form					<b>1,55</b>
Rump Angle					<b>0,79</b>
Thurl Width					<b>1,17</b>
Rear Legs-Side					<b>-1,00</b>
Rear Legs-Rear					<b>1,11</b>
Foot Angle					<b>1,79</b>
Feet & Legs Score					<b>0,47</b>
F. Udder Attachment					<b>2,58</b>
Rear Udder Height					<b>3,00</b>
Rear Udder Width					<b>3,27</b>
Udder Cleft					<b>1,38</b>
Udder Depth					<b>2,11</b>
Front Teat Placement					<b>0,84</b>
Rear Teat P. Rear					<b>1,08</b>
Teat Length					<b>0,03</b>



# DG JARMO

DE001406512971 - CF TL - 643HO05257



DG Jarmo

**CAPTAIN**

Charl x Sabre

**REDROCK**

PH Jezebel ET

**KERRIGAN**

Simple-Dreams PH  
Ruw Cookie. ET-VG85

**TPI**  
**+3011**

**NET MERIT \$**  
**+1027**

**CHEESE MERIT \$**  
**+1042**

► **PRODUCTION TRAITS** (81% REL)

Milk <b>+1469 lbs</b>	% Fat <b>+0,11</b>	Fat <b>+89</b>	% Protein <b>+0,06</b>	Protein <b>+63</b>
K Cas <b>AB</b>		Beta Lact <b>AA</b>		Beta Cas <b>A2A2</b>

► **HEALTH TRAITS**

SCS	<b>+2,75</b>	SCE	<b>+1,80</b>
PL	<b>+5,00</b>	DCE	<b>+2,10</b>
DPR	<b>+1,60</b>	FI	<b>+2,40</b>

Free Haplotypes  
[i-][i-][i-]



Miss Shottie Sadie-ET

► **TYPE TRAITS**

PTAT **+0,77** UDC **+1,66** FLC **+0,41**

Stature	-0,74
Strength	-1,63
Body Dept	-1,42
Dairy Form	0,63
Rump Angle	-0,11
Thurl Width	0,43
Rear Legs-Side	-1,04
Rear Legs-Rear	-0,05
Foot Angle	-0,17
Feet & Legs Score	0,36
F. Udder Attachment	1,24
Rear Udder Height	> 2,27
Rear Udder Width	> 1,88
Udder Cleft	0,27
Udder Depth	1,07
Front Teat Placement	0,30
Rear Teat P. Rear	0,18
Teat Length	-0,95

# DG JUNO

DE001406446472 - CF TL - 643HO05261



DG Juno

**CAPTAIN**

Charl x Sabre

**TOPSTONE**

DG R Jessie ET

**REDROCK**

PH Jezebel ET

**TPI**  
**+2943**

**NET MERIT \$**  
**+986**

**CHEESE MERIT \$**  
**+992**

► **PRODUCTION TRAITS** (81% REL)

Milk <b>+2113 lbs</b>	% Fat <b>+0,00</b>	Fat <b>+80</b>	% Protein <b>+0,02</b>	Protein <b>+71</b>
K Cas <b>AB</b>		Beta Lact <b>AB</b>		Beta Cas <b>A2A2</b>

► **HEALTH TRAITS**

SCS	<b>+2,86</b>	SCE	<b>+1,40</b>
PL	<b>+5,00</b>	DCE	<b>+2,10</b>
DPR	<b>+0,00</b>	FI	<b>+0,50</b>

Free Haplotypes  
[i-][i-][i-]



Miss Shottie Sadie-ET

► **TYPE TRAITS**

PTAT **+1,12** UDC **+1,33** FLC **+0,80**

Stature	0,10
Strength	-0,57
Body Dept	-0,18
Dairy Form	1,33
Rump Angle	-0,64
Thurl Width	0,58
Rear Legs-Side	-0,34
Rear Legs-Rear	0,46
Foot Angle	0,03
Feet & Legs Score	0,90
F. Udder Attachment	1,11
Rear Udder Height	> 2,12
Rear Udder Width	> 1,70
Udder Cleft	0,45
Udder Depth	0,89
Front Teat Placement	-0,27
Rear Teat P. Rear	-0,20
Teat Length	-0,27



NL000634723027 - TL - 643HO05166

# DG LAMBERT Legend



DG Lambert

**CAPTAIN**

Charl x Sabre

**CHARL**

DG Legal ET - VG86

**BLOWTORCH**

Peak Lace-ET ET

<b>TPI</b> <b>+3124</b>	<b>NET MERIT \$</b> <b>+1209</b>	<b>CHEESE MERIT \$</b> <b>+1221</b>
----------------------------	-------------------------------------	--

► **PRODUCTION TRAITS** (81% REL)

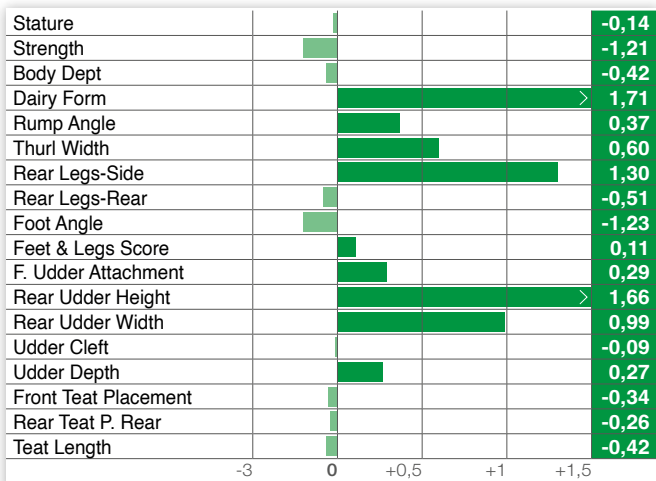
Milk <b>+1941 lbs</b>	% Fat <b>+0,19</b>	Fat <b>+130</b>	% Protein <b>+0,04</b>	Protein <b>+72</b>
K Cas <b>AB</b>		Beta Lact <b>AA</b>		Beta Cas <b>A2A2</b>

► **HEALTH TRAITS**

SCS	<b>+2,80</b>	SCE	<b>+1,40</b>
PL	<b>+5,50</b>	DCE	<b>+1,50</b>
DPR	<b>+0,30</b>	FI	<b>+1,00</b>

► **TYPE TRAITS**

PTAT	<b>+0,56</b>	UDC	<b>+0,75</b>	FLC	<b>-0,11</b>
------	--------------	-----	--------------	-----	--------------



Free **Haplotypes**  
[i]-[i]-[i]-[i]



# DG LANCE

NL000634724587 - TL - 643HO05164



DG Lance

**CAPTAIN**

Charl x Sabre

**CHARL**

DG Legal ET - VG86

**BLOWTORCH**

Peak Lace-ET ET

<b>TPI</b> <b>+3106</b>	<b>NET MERIT \$</b> <b>+1178</b>	<b>CHEESE MERIT \$</b> <b>+1190</b>
----------------------------	-------------------------------------	--

► **PRODUCTION TRAITS** (81% REL)

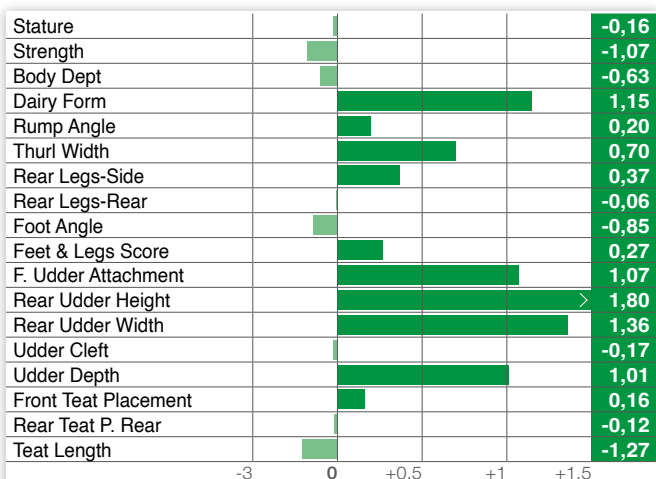
Milk <b>+1640 lbs</b>	% Fat <b>+0,25</b>	Fat <b>+137</b>	% Protein <b>+0,04</b>	Protein <b>+62</b>
K Cas <b>AA</b>		Beta Lact <b>AB</b>		Beta Cas <b>A2A2</b>

► **HEALTH TRAITS**

SCS	<b>+2,76</b>	SCE	<b>+1,80</b>
PL	<b>+5,50</b>	DCE	<b>+1,90</b>
DPR	<b>-0,50</b>	FI	<b>+0,20</b>

► **TYPE TRAITS**

PTAT	<b>+0,79</b>	UDC	<b>+1,15</b>	FLC	<b>+0,18</b>
------	--------------	-----	--------------	-----	--------------



Free **Haplotypes**  
[i]-[i]-[i]-[i]



BODENGO  
INSEME

# LILIUM

IT014990196057 - 543HO00305



Bodengo Inseme Liliium

**MACHONE** × **NEBULA** × **JEDI**  
Milktime x Romero × C.M.E. Nebula Lexy ET MB85 × C.M.E. Jedi Zetajones

<b>TPI</b> <b>+2803</b>	<b>NET MERIT \$</b> <b>+725</b>	<b>CHEESE MERIT \$</b> <b>+744</b>
----------------------------	------------------------------------	---------------------------------------

► **PRODUCTION TRAITS (81% REL)**

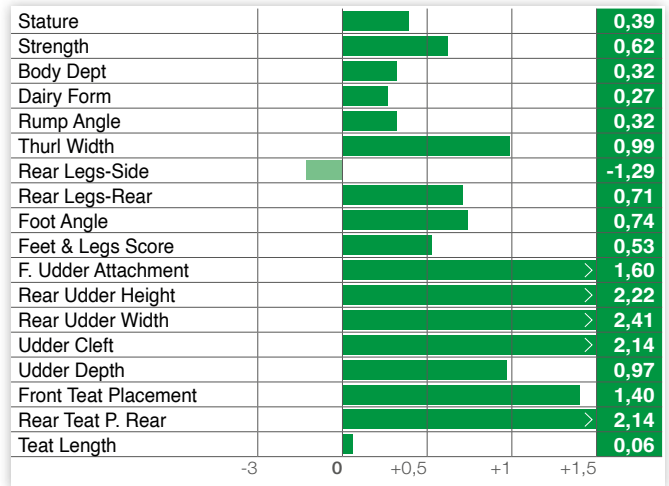
Milk <b>+1444 lbs</b>	% Fat <b>+0,01</b>	Fat <b>+57</b>	% Protein <b>+0,06</b>	Protein <b>+63</b>
K Cas <b>AB</b>		Beta Lact <b>AA</b>		Beta Cas <b>A1A2</b>

► **HEALTH TRAITS**

SCS	<b>+2,61</b>	SCE	<b>+2,10</b>
PL	<b>+3,90</b>	DCE	<b>+1,90</b>
DPR	<b>-0,90</b>	FI	<b>-0,40</b>

► **TYPE TRAITS**

PTAT	<b>+1,39</b>	UDC	<b>+1,86</b>	FLC	<b>+0,50</b>
------	--------------	-----	--------------	-----	--------------



AL.CO.BIA.  
INSEME

# LITIO

IT034991196866 - ET TL TM TV TY - 231



Al.Co.Bia. Inseme Litio ET

**PANAMA** × **CASPER** × **EAGLE**  
Pinnacle x Jedi × Al.Co.Bia. Casper Mania MB88 × Al.Co.Bia. Eagle Debbie MB89

<b>TPI</b> <b>+2510</b>	<b>NET MERIT \$</b> <b>+405</b>	<b>CHEESE MERIT \$</b> <b>+416</b>
----------------------------	------------------------------------	---------------------------------------

► **PRODUCTION TRAITS (81% REL)**

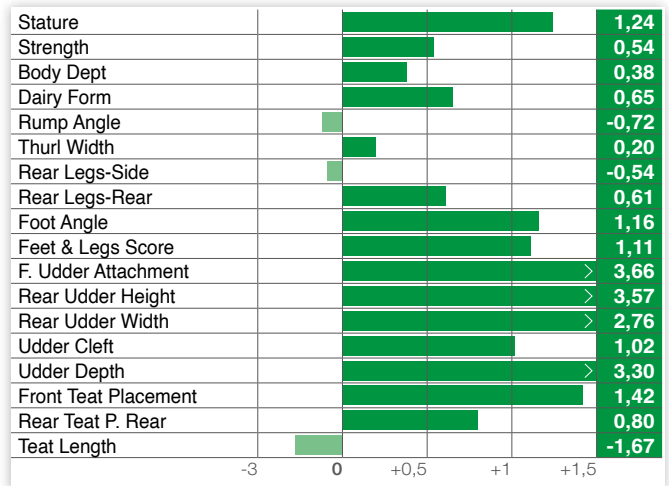
Milk <b>+723 lbs</b>	% Fat <b>-0,03</b>	Fat <b>+19</b>	% Protein <b>+0,03</b>	Protein <b>+30</b>
K Cas <b>BB</b>		Beta Lact <b>AB</b>		Beta Cas <b>A2A2</b>

► **HEALTH TRAITS**

SCS	<b>+2,69</b>	SCE	<b>+2,30</b>
PL	<b>+3,20</b>	DCE	<b>+2,70</b>
DPR	<b>-1,10</b>	FI	<b>-0,60</b>

► **TYPE TRAITS**

PTAT	<b>+2,10</b>	UDC	<b>+2,81</b>	FLC	<b>+0,80</b>
------	--------------	-----	--------------	-----	--------------



CIOLFARM  
INSEME

# LUDWIG

IT017992639133 - 543HO00304

SEXED SEMEN *Made in Italy*  
**FOEMINA**  
Sexed **ULTRA 4M**



**CAPONE**  
Renegade x Modesty

**BRAMANTE**  
Ciolfarm Bramante  
Soler MB85

**BALISTO**  
Ciolfarm Balisto  
Soleil EX90

**TPI**  
**+2769**

**NET MERIT \$**  
**+786**

**CHEESE MERIT \$**  
**+803**

► **PRODUCTION TRAITS (81% REL)**

Milk <b>+1470 lbs</b>	% Fat <b>+0,02</b>	Fat <b>+61</b>	% Protein <b>+0,06</b>	Protein <b>+64</b>
K Cas <b>BB</b>		Beta Lact <b>AA</b>		Beta Cas <b>A2A2</b>

► **HEALTH TRAITS**

SCS	<b>+2,71</b>	SCE	<b>+1,80</b>
PL	<b>+4,60</b>	DCE	<b>+2,00</b>
DPR	<b>-1,40</b>	FI	<b>-0,60</b>

► **TYPE TRAITS**

PTAT **+1,21** UDC **+0,88** FLC **+0,80**

Stature	1,12
Strength	0,09
Body Dept	0,44
Dairy Form	1,54
Rump Angle	-0,92
Thurl Width	-0,18
Rear Legs-Side	0,34
Rear Legs-Rear	1,08
Foot Angle	1,38
Feet & Legs Score	0,93
F. Udder Attachment	1,11
Rear Udder Height	1,82
Rear Udder Width	1,40
Udder Cleft	0,25
Udder Depth	1,21
Front Teat Placement	-0,34
Rear Teat P. Rear	-0,74
Teat Length	1,61

Free **Haplotypes**  
i-i-i-i-i



ZANI  
INSEME

# MACCHIAVELLI

IT017992074001 - 543HO00223 - aAa 423

SEXED SEMEN *Made in Italy*  
**FOEMINA**  
Sexed **ULTRA 4M**



**NEBULA**  
Charley x Balisto

**SILVER**  
Zani Silver Ambra  
MB86

**SUPERSIRE**  
Zani Supersire  
Orietta MB87

**TPI**  
**+2510**

**NET MERIT \$**  
**+566**

**CHEESE MERIT \$**  
**+577**

► **PRODUCTION TRAITS (82% REL)**

Milk <b>+1164 lbs</b>	% Fat <b>-0,01</b>	Fat <b>+42</b>	% Protein <b>+0,04</b>	Protein <b>+47</b>
K Cas <b>AB</b>		Beta Lact <b>AA</b>		Beta Cas <b>A2A2</b>

► **HEALTH TRAITS**

SCS	<b>+2,78</b>	SCE	<b>+1,50</b>
PL	<b>+3,30</b>	DCE	<b>+1,80</b>
DPR	<b>-0,60</b>	FI	<b>-0,3</b>

► **TYPE TRAITS**

PTAT **+0,55** UDC **+0,50** FLC **+0,16**

Stature	0,67
Strength	0,22
Body Dept	0,18
Dairy Form	0,34
Rump Angle	0,16
Thurl Width	-0,39
Rear Legs-Side	0,37
Rear Legs-Rear	0,22
Foot Angle	0,45
Feet & Legs Score	0,30
F. Udder Attachment	0,81
Rear Udder Height	1,07
Rear Udder Width	0,66
Udder Cleft	0,02
Udder Depth	0,53
Front Teat Placement	0,23
Rear Teat P. Rear	-0,32
Teat Length	0,69

Free **Haplotypes**  
i-i-i-i-i





**New**GEGANIA  
INSEME**MAITAI**

IT028990497146 - ET TL TM TV TY - 543HO00311

SEXED SEMEN *made in Italy*  
**FOEMINA**  
Sexed **ULTRA 4M****MAHOMES**

Eldorado x Milktime

**FREEMAX**NH Inseme Matilde  
ET - VG85**GYMNAST**NH Sunview Gym  
Mystery ET - VG85**TPI****+2877****NET MERIT \$****+833****CHEESE MERIT \$****+847****PRODUCTION TRAITS (79% REL)**

Milk	% Fat	Fat	% Protein	Protein
<b>+1104 lbs</b>	<b>+0,20</b>	<b>+102</b>	<b>+0,07</b>	<b>+56</b>
K Cas <b>BB</b>		Beta Lact <b>AA</b>		Beta Cas <b>A2A2</b>

**HEALTH TRAITS**

SCS	<b>+2,94</b>	SCE	<b>+1,50</b>
PL	<b>+2,50</b>	DCE	<b>+1,70</b>
DPR	<b>-0,80</b>	FI	<b>+0,20</b>

**Free Haplotypes**  
[i]-[i]-[i]**TYPE TRAITS**PTAT **+1,35** UDC **+1,52** FLC **+0,42**

Stature	0,60
Strength	0,28
Body Dept	0,32
Dairy Form	0,77
Rump Angle	-0,44
Thurl Width	0,81
Rear Legs-Side	0,38
Rear Legs-Rear	0,42
Foot Angle	0,58
Feet & Legs Score	0,54
F. Udder Attachment	> 1,81
Rear Udder Height	> 2,08
Rear Udder Width	> 2,07
Udder Cleft	0,37
Udder Depth	1,09
Front Teat Placement	0,37
Rear Teat P. Rear	0,10
Teat Length	-0,03

-3 0 +0,5 +1 +1,5

CIRIO  
AGRICOLA  
INSEME**MANFREDI**

IT061990879534 - 543HO00238 - aAa 243

**PADAWAN**

Jedi x Enforcer

**BALISTO**

G-Plus No Risk ET

**DONATELLO**Sandy-Valley No  
Problem-ET GP81**TPI****+2599****NET MERIT \$****+535****CHEESE MERIT \$****+541****PRODUCTION TRAITS (81% REL)**

Milk	% Fat	Fat	% Protein	Protein
<b>+1393 lbs</b>	<b>-0,14</b>	<b>+11</b>	<b>+0,01</b>	<b>+46</b>
K Cas <b>AB</b>		Beta Lact <b>AA</b>		Beta Cas <b>A2A2</b>

**HEALTH TRAITS**

SCS	<b>+2,79</b>	SCE	<b>+1,90</b>
PL	<b>+4,10</b>	DCE	<b>+2,30</b>
DPR	<b>+2,20</b>	FI	<b>+2,60</b>

**TYPE TRAITS**PTAT **+1,11** UDC **+1,95** FLC **+0,29**

Stature	-0,15
Strength	-0,52
Body Dept	-0,75
Dairy Form	0,23
Rump Angle	-0,78
Thurl Width	-0,24
Rear Legs-Side	-1,05
Rear Legs-Rear	0,43
Foot Angle	0,44
Feet & Legs Score	0,20
F. Udder Attachment	> 2,04
Rear Udder Height	> 2,22
Rear Udder Width	> 1,97
Udder Cleft	0,95
Udder Depth	> 1,66
Front Teat Placement	1,02
Rear Teat P. Rear	> 1,67
Teat Length	-0,91

-3 0 +0,5 +1 +1,5



CIRIO AGRICOLA INSEME **MANTRA**

IT061991006903 - 543HO00291 - aAa 432



Cirio Agricola Inseme Mantra

**TRY ME** **YODA**  
 Resolve x Profit X Pine-Tree 4425Yoda 7994 X Westcoast Dpick Chantal 4425

<b>TPI</b> <b>+2804</b>	<b>NET MERIT \$</b> <b>+828</b>	<b>CHEESE MERIT \$</b> <b>+849</b>
----------------------------	------------------------------------	---------------------------------------

**PRODUCTION TRAITS (82% REL)**

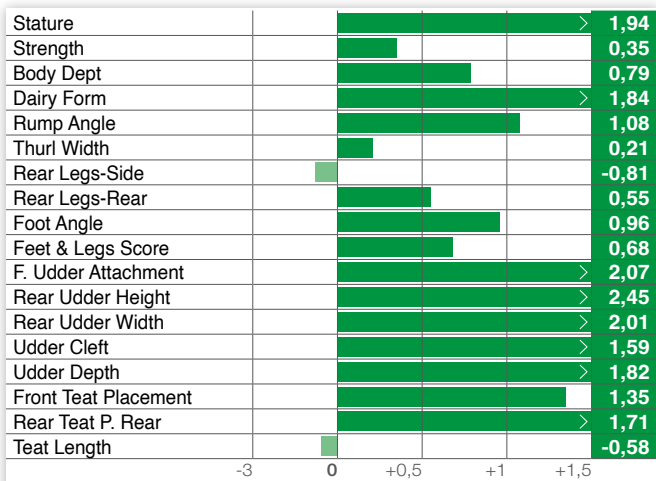
Milk <b>+1140 lbs</b>	% Fat <b>+0,08</b>	Fat <b>+66</b>	% Protein <b>+0,09</b>	Protein <b>+62</b>
K Cas <b>BB</b>		Beta Lact <b>BB</b>		Beta Cas <b>A1A2</b>

**HEALTH TRAITS**

SCS	<b>+2,73</b>	SCE	<b>+2,60</b>
PL	<b>+5,00</b>	DCE	<b>+2,30</b>
DPR	<b>-2,20</b>	FI	<b>-1,30</b>

**TYPE TRAITS**

PTAT	<b>+1,84</b>	UDC	<b>+1,68</b>	FLC	<b>+0,26</b>
------	--------------	-----	--------------	-----	--------------



DG **NERIAH**

DE001406709048 - CF TL - 643HO05173



DG Neriah

**CAPTAIN** **TOPSTONE** **MEDLEY**  
 Charl x Sabre X Hul-Stein DG Nellie E X DG HS Nathaly ET

<b>TPI</b> <b>+3057</b>	<b>NET MERIT \$</b> <b>+1100</b>	<b>CHEESE MERIT \$</b> <b>+1114</b>
----------------------------	-------------------------------------	--

**PRODUCTION TRAITS (81% REL)**

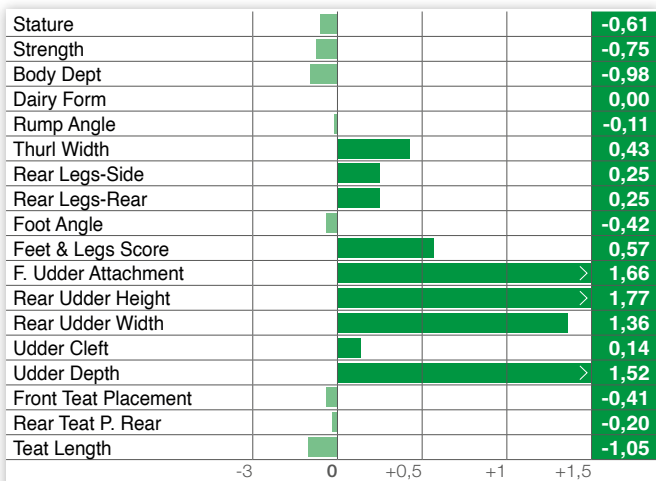
Milk <b>+1542 lbs</b>	% Fat <b>+0,20</b>	Fat <b>+117</b>	% Protein <b>+0,05</b>	Protein <b>+64</b>
K Cas <b>AB</b>		Beta Lact <b>AA</b>		Beta Cas <b>A2A2</b>

**HEALTH TRAITS**

SCS	<b>+2,79</b>	SCE	<b>+1,60</b>
PL	<b>+5,40</b>	DCE	<b>+1,70</b>
DPR	<b>-0,20</b>	FI	<b>+0,40</b>

**TYPE TRAITS**

PTAT	<b>+0,85</b>	UDC	<b>+1,49</b>	FLC	<b>+0,62</b>
------	--------------	-----	--------------	-----	--------------



Free Haplotypes



DG

# NORMAN

NL000634724695 - 643H005172

 SEXED SEMEN *Made in Italy*  
**FOEMINA**  
 Sexed **ULTRA 4M**
**CAPTAIN**

Charl x Sabre

**TOPSTONE**Hul-Stein DG Nellie  
ET**MEDLEY**

DG HS Nathaly ET

**TPI**  
**+3018**
**NET MERIT \$**  
**+1124**
**CHEESE MERIT \$**  
**+1133**


DG Norman

**PRODUCTION TRAITS (81% REL)**

Milk	% Fat	Fat	% Protein	Protein
<b>+1749 lbs</b>	<b>+0,18</b>	<b>+122</b>	<b>+0,03</b>	<b>+64</b>
K Cas <b>AB</b>		Beta Lact <b>AA</b>		Beta Cas <b>A2A2</b>

**HEALTH TRAITS**

SCS	<b>+2,86</b>	SCE	<b>+1,40</b>
PL	<b>+4,70</b>	DCE	<b>+1,50</b>
DPR	<b>-0,40</b>	FI	<b>+0,10</b>

**Free Haplotypes**  

**TYPE TRAITS**
**PTAT +0,24 UDC +1,45 FLC +0,10**

Stature	-1,06
Strength	-1,66
Body Dept	-1,68
Dairy Form	0,42
Rump Angle	0,34
Thurl Width	0,05
Rear Legs-Side	0,02
Rear Legs-Rear	-0,33
Foot Angle	-1,10
Feet & Legs Score	-0,01
F. Udder Attachment	1,02
Rear Udder Height	> 1,90
Rear Udder Width	> 1,80
Udder Cleft	0,31
Udder Depth	0,79
Front Teat Placement	0,03
Rear Teat P. Rear	0,28
Teat Length	-1,79

**Polled**

DG

# OGLETHORPE P

DE001406512731 - 643H005158

 SEXED SEMEN *Made in Italy*  
**FOEMINA**  
 Sexed **ULTRA 4M**
**PLINKO**

Marius x Topshot

**HOTSPOT**

Gen Oliva

**FINDER**

Col Orlan ET MB85

**TPI**  
**+2763**
**NET MERIT \$**  
**+793**
**CHEESE MERIT \$**  
**+818**


DG Oglethorpe

**PRODUCTION TRAITS (81% REL)**

Milk	% Fat	Fat	% Protein	Protein
<b>+556 lbs</b>	<b>+0,17</b>	<b>+69</b>	<b>+0,13</b>	<b>+53</b>
K Casein <b>BB</b>		Beta Lact <b>AB</b>		Beta Casein <b>A1A2</b>

**HEALTH TRAITS**

SCS	<b>+2,74</b>	SCE	<b>+1,80</b>
PL	<b>+5,00</b>	DCE	<b>+2,00</b>
DPR	<b>+0,10</b>	FI	<b>+0,90</b>

**Free Haplotypes**  

**TYPE TRAITS**
**PTAT +0,57 UDC +0,93 FLC +0,49**

Stature	-0,02
Strength	-0,77
Body Dept	-0,83
Dairy Form	0,30
Rump Angle	0,48
Thurl Width	-0,11
Rear Legs-Side	-1,49
Rear Legs-Rear	0,33
Foot Angle	0,74
Feet & Legs Score	0,52
F. Udder Attachment	1,50
Rear Udder Height	1,11
Rear Udder Width	0,87
Udder Cleft	-0,74
Udder Depth	> 1,50
Front Teat Placement	-0,75
Rear Teat P. Rear	-0,86
Teat Length	0,62



DG **PAKUNO** Legend

NL000634722411 - TL - 643HO05162



DG Pakuno

**CAPTAIN** x **CHARL** x **MODESTY**  
 Charl x Sabre x DG Palenka ET x Peak Chorus-ET

**TPI** +3149    **NET MERIT \$** +1204    **CHEESE MERIT \$** +1211

► **PRODUCTION TRAITS (81% REL)**

Milk	% Fat	Fat	% Protein	Protein
<b>+1666 lbs</b>	<b>+0,25</b>	<b>+138</b>	<b>+0,04</b>	<b>+63</b>
K Cas <b>AE</b>		Beta Lact <b>AA</b>		Beta Cas <b>A1A2</b>

► **HEALTH TRAITS**

SCS	<b>+3,02</b>	SCE	<b>+1,60</b>
PL	<b>+4,70</b>	DCE	<b>+1,70</b>
DPR	<b>+0,80</b>	FI	<b>+1,60</b>

Free Haplotypes



Cookiecutter Sshot Honor-ET

► **TYPE TRAITS**

PTAT **+0,82**    UDC **+1,38**    FLC **+0,47**

Stature	-0,79
Strength	-1,96
Body Dept	-1,03
Dairy Form	2,02
Rump Angle	0,30
Thurl Width	-0,06
Rear Legs-Side	1,47
Rear Legs-Rear	-0,17
Foot Angle	-1,39
Feet & Legs Score	0,57
F. Udder Attachment	0,41
Rear Udder Height	2,31
Rear Udder Width	1,92
Udder Cleft	0,55
Udder Depth	-0,02
Front Teat Placement	0,86
Rear Teat P. Rear	0,94
Teat Length	-0,98

**New** AL.CO.BIA. INSEME **PACEFULL**

IT034991377426 - ET TL TM TY - 643HO05682



Al.Co.Bia. Inseme Pacefull

**ZINGLER** x **SIGILLO** x **CASPER**  
 Altazazzle x Altarobert x AL.Co.Bia. Inseme Super ET -GP 84 x Gioia Inseme Edelweiss ET- VG 87

**TPI** +2786    **NET MERIT \$** +786    **CHEESE MERIT \$** +801

► **PRODUCTION TRAITS (79% REL)**

Milk	% Fat	Fat	% Protein	Protein
<b>+1014 lbs</b>	<b>+0,04</b>	<b>+52</b>	<b>+0,06</b>	<b>+49</b>
K Cas <b>BB</b>		Beta Lact <b>AB</b>		Beta Cas <b>A1A2</b>

► **HEALTH TRAITS**

SCS	<b>+2,77</b>	SCE	<b>+1,60</b>
PL	<b>+5,00</b>	DCE	<b>+1,20</b>
DPR	<b>+1,20</b>	FI	<b>+1,40</b>

Free Haplotypes



Gioia Inseme Edelweiss ET

► **TYPE TRAITS**

PTAT **+1,25**    UDC **+1,61**    FLC **+0,12**

Stature	1,22
Strength	-0,41
Body Dept	-0,51
Dairy Form	0,43
Rump Angle	1,08
Thurl Width	0,47
Rear Legs-Side	0,50
Rear Legs-Rear	-0,16
Foot Angle	0,30
Feet & Legs Score	0,54
F. Udder Attachment	1,87
Rear Udder Height	2,19
Rear Udder Width	1,63
Udder Cleft	1,15
Udder Depth	1,81
Front Teat Placement	0,94
Rear Teat P. Rear	1,39
Teat Length	-0,28

**New**

GEN INSEME

# PARELLI

**AEROSMITH**

Aristocrat x Bighit P

**NACASH**

DG Gen Platin

**GYMNAST**

Col Peggy MB86

**TPI**  
**+2842****NET MERIT \$**  
**761****CHEESE MERIT \$**  
**775****► PRODUCTION TRAITS (79% REL)**

Milk	% Fat	Fat	% Protein	Protein
<b>+1146 lbs</b>	<b>+0,11</b>	<b>+75</b>	<b>+0,06</b>	<b>+52</b>
K Casein <b>AB</b>		Beta Lactoglobuline <b>AA</b>		Beta Casein <b>A1A2</b>

**► HEALTH TRAITS**

SCS	<b>+2,78</b>	SCE	<b>+1,70</b>
PL	<b>+3,00</b>	DCE	<b>+1,60</b>
DPR	<b>-0,90</b>	FI	<b>-0,20</b>

NL000922406764 - CF TL TM TV TY - 643HO05683

SEXED SEMEN *Made in Italy*  
**FOEMINA**  
Sexed **ULTRA 4M****► TYPE TRAITS**

PTAT **+1,42** UDC **+2,29** FLC **+1,06**

Stature				<b>1,03</b>
Strength				<b>0,56</b>
Body Dept				<b>0,03</b>
Dairy Form				<b>0,07</b>
Rump Angle				<b>-0,90</b>
Thurl Width				<b>1,02</b>
Rear Legs-Side				<b>0,40</b>
Rear Legs-Rear				<b>1,19</b>
Foot Angle				<b>1,36</b>
Feet & Legs Score				<b>1,19</b>
F. Udder Attachment				<b>3,24</b>
Rear Udder Height				<b>2,45</b>
Rear Udder Width				<b>2,07</b>
Udder Cleft				<b>1,06</b>
Udder Depth				<b>2,69</b>
Front Teat Placement				<b>1,22</b>
Rear Teat P. Rear				<b>1,15</b>
Teat Length				<b>-0,28</b>

-3    0    +0,5    +1    +1,5

FRIGONI  
INSEME

# PASOLINI

**PADAWAN**

Jedi x Enforcer

**GYMNAST**

Frigoni Gymnast B+83

**PENMANSHIP**Agrigen Royal  
Penmanship Tessa B+82**TPI**  
**+2661****NET MERIT \$**  
**+566****CHEESE MERIT \$**  
**+579****► PRODUCTION TRAITS (81% REL)**

Milk	% Fat	Fat	% Protein	Protein
<b>+1543 lbs</b>	<b>-0,12</b>	<b>+25</b>	<b>+0,05</b>	<b>+62</b>
K Cas <b>AB</b>		Beta Lact <b>AA</b>		Beta Cas <b>A2A2</b>

**► HEALTH TRAITS**

SCS	<b>+2,79</b>	SCE	<b>+1,70</b>
PL	<b>+3,20</b>	DCE	<b>+1,80</b>
DPR	<b>+2,90</b>	FI	<b>+3,00</b>

IT020991496723 - 543HO00257 - aAa 342

SEXED SEMEN *Made in Italy*  
**FOEMINA**  
Sexed **ULTRA 4M****► TYPE TRAITS**

PTAT **+0,94** UDC **+1,10** FLC **-0,24**

Stature				<b>1,67</b>
Strength				<b>0,63</b>
Body Dept				<b>0,39</b>
Dairy Form				<b>0,75</b>
Rump Angle				<b>0,02</b>
Thurl Width				<b>0,96</b>
Rear Legs-Side				<b>-1,35</b>
Rear Legs-Rear				<b>0,27</b>
Foot Angle				<b>0,64</b>
Feet & Legs Score				<b>0,11</b>
F. Udder Attachment				<b>0,82</b>
Rear Udder Height				<b>1,52</b>
Rear Udder Width				<b>1,78</b>
Udder Cleft				<b>1,77</b>
Udder Depth				<b>1,28</b>
Front Teat Placement				<b>0,72</b>
Rear Teat P. Rear				<b>1,63</b>
Teat Length				<b>-0,09</b>

-3    0    +0,5    +1    +1,5

Frigoni Gymnast



AL.CO.BIA.  
INSEME

# PECHINO

IT034991319977 - 543HO00301



Al.Co.Bia. Inseme Pechino

**PELLEGRINO**  
Topnotch x Router

**CASPER**  
Gioia Inseme  
Edelweiss MB87

**MODESTY**  
Holbra Malana-ET  
MB7

**TPI**  
**+2596**

**NET MERIT \$**  
**+487**

**CHEESE MERIT \$**  
**+497**

► **PRODUCTION TRAITS (80% REL)**

Milk	% Fat	Fat	% Protein	Protein
<b>+665 lbs</b>	<b>+0,03</b>	<b>+35</b>	<b>+0,04</b>	<b>+31</b>
K Casein <b>AB</b>		Beta Lactoglobuline <b>BB</b>		Beta Casein <b>A1A2</b>

► **HEALTH TRAITS**

SCS	<b>+2,81</b>	SCE	<b>+1,90</b>
PL	<b>+3,20</b>	DCE	<b>+1,60</b>
DPR	<b>+0,70</b>	FI	<b>+0,70</b>



Gioia Inseme Edelweiss ET - Dam of Portofino

**Free Haplotypes**  
[i-][i-][i-]

► **TYPE TRAITS**

**PTAT +1,64 UDC +2,63 FLC +0,42**

Stature	>	1,79
Strength		-0,10
Body Dept		-0,20
Dairy Form	>	0,38
Rump Angle		0,14
Thurl Width		0,03
Rear Legs-Side		0,14
Rear Legs-Rear		-0,02
Foot Angle	>	0,91
Feet & Legs Score	>	0,98
F. Udder Attachment	>	3,31
Rear Udder Height	>	3,26
Rear Udder Width	>	2,33
Udder Cleft	>	1,58
Udder Depth	>	3,63
Front Teat Placement	>	0,51
Rear Teat P. Rear	>	0,82
Teat Length		-0,28

AL.CO.BIA.  
INSEME

# PORTOFINO

IT034991251191 - 543HO00279 - aAa 234



Al.Co.Bia. Inseme Portofino

**KUDOS**  
Topnotch x Jedi

**CASPER**  
Gioia Inseme  
Edelweiss MB87

**MODESTY**  
Holbra Malana  
ET MB87

**TPI**  
**+2753**

**NET MERIT \$**  
**+574**

**CHEESE MERIT \$**  
**+587**

► **PRODUCTION TRAITS (81% REL)**

Milk	% Fat	Fat	% Protein	Protein
<b>+1416 lbs</b>	<b>+0,00</b>	<b>+55</b>	<b>+0,06</b>	<b>+61</b>
K Cas <b>BB</b>		Beta Lact <b>AB</b>		Beta Cas <b>A1A2</b>

► **HEALTH TRAITS**

SCS	<b>+2,84</b>	SCE	<b>+2,20</b>
PL	<b>+1,90</b>	DCE	<b>+1,80</b>
DPR	<b>-1,40</b>	FI	<b>-0,80</b>



Gioia Inseme Edelweiss ET - Dam of Portofino

► **TYPE TRAITS**

**PTAT +2,36 UDC +2,35 FLC +0,49**

Stature	>	2,80
Strength	>	1,29
Body Dept	>	1,53
Dairy Form	>	1,66
Rump Angle		0,37
Thurl Width	>	1,29
Rear Legs-Side	>	0,44
Rear Legs-Rear		0,24
Foot Angle	>	1,60
Feet & Legs Score	>	1,24
F. Udder Attachment	>	3,14
Rear Udder Height	>	3,07
Rear Udder Width	>	2,88
Udder Cleft	>	2,32
Udder Depth	>	2,80
Front Teat Placement	>	1,23
Rear Teat P. Rear	>	2,05
Teat Length		0,07





ISOLABELLA  
INSEME

## PRINSTON

IT001991528502 - ET TL TM TV TY - 643HO05544

SEXED SEMEN *Made in Italy*  
**FOEMINA**  
Sexed **ULTRA 4M**

## ZINGLER

Altazazzle  
x Altarobert

## SIGILLO

Al.Co.Bia. Inseme  
Super ET-GP 84

## CASPER

Gioia Inseme  
Edelweiss ET-VG 87TPI  
**+2802**NET MERIT \$  
**+761**CHEESE MERIT \$  
**+781**

Isolabella Inseme Prinston

## ► PRODUCTION TRAITS (79% REL)

Milk	% Fat	Fat	% Protein	Protein
<b>+607 lbs</b>	<b>+0,10</b>	<b>+51</b>	<b>+0,08</b>	<b>+42</b>
K Cas <b>BB</b>		Beta Lact <b>AA</b>		Beta Cas <b>A1A2</b>

## ► HEALTH TRAITS

SCS	<b>+2,66</b>	SCE	<b>+1,80</b>
PL	<b>+6,30</b>	DCE	<b>+1,20</b>
DPR	<b>+3,10</b>	FI	<b>+3,20</b>



Gioia Inseme Edelweiss ET

Free Haplotypes  
[i] [j] [k] [l]

## ► TYPE TRAITS

PTAT **+0,87** UDC **+1,24** FLC **-0,21**

Stature	1,58
Strength	0,51
Body Dept	-0,17
Dairy Form	-0,76
Rump Angle	0,91
Thurl Width	0,74
Rear Legs-Side	-0,17
Rear Legs-Rear	-0,22
Foot Angle	0,56
Feet & Legs Score	0,22
F. Udder Attachment	2,30
Rear Udder Height	1,42
Rear Udder Width	0,72
Udder Cleft	0,25
Udder Depth	2,62
Front Teat Placement	0,10
Rear Teat P. Rear	0,33
Teat Length	-0,28

IT019991894402 -543HO00248 - aAa 234



Idevra Royal Inseme Rossini

IDEVRA  
ROYAL INSEME

## ROSSINI

## HOTHAND

Hotline x Montroos

## BANDARES

Inseme Aritmia B+83

## RODANAS

Vermunt

TPI  
**+2604**NET MERIT \$  
**+584**CHEESE MERIT \$  
**+606**

## ► PRODUCTION TRAITS (82% REL)

Milk	% Fat	Fat	% Protein	Protein
<b>+818 lbs</b>	<b>+0,05</b>	<b>+45</b>	<b>+0,09</b>	<b>+52</b>
K Cas <b>AA</b>		Beta Lact <b>AA</b>		Beta Cas <b>A1A2</b>

## ► HEALTH TRAITS

SCS	<b>+2,69</b>	SCE	<b>+1,90</b>
PL	<b>+2,40</b>	DCE	<b>+2,10</b>
DPR	<b>-0,90</b>	FI	<b>-0,70</b>

## ► TYPE TRAITS

PTAT **+1,35** UDC **+1,55** FLC **+0,26**

Stature	1,20
Strength	0,34
Body Dept	0,35
Dairy Form	1,20
Rump Angle	1,05
Thurl Width	0,00
Rear Legs-Side	-0,49
Rear Legs-Rear	0,85
Foot Angle	1,11
Feet & Legs Score	0,36
F. Udder Attachment	1,87
Rear Udder Height	2,35
Rear Udder Width	2,16
Udder Cleft	0,60
Udder Depth	1,45
Front Teat Placement	0,17
Rear Teat P. Rear	-0,09
Teat Length	-0,22



SCOTTA  
INSEME

# SALUZZO

IT004992425480 - 543HO00300

SEXED SEMEN *Made in Italy*  
**FOEMINA**  
Sexed **ULTRA 4M**

**PLINKO**

**DATELINE**

**SUPERSTAR**

Marius x Topshot

Scotta Inseme Ceffs  
ET MB86

Zaqqa MB85



Scotta Inseme Saluzzo

**TPI**  
**+2783**

**NET MERIT \$**  
**+877**

**CHEESE MERIT \$**  
**+903**

► **PRODUCTION TRAITS** (81% REL)

Milk	% Fat	Fat	% Protein	Protein
<b>+1190 lbs</b>	<b>+0,10</b>	<b>+75</b>	<b>+0,09</b>	<b>+63</b>
K Cas <b>AA</b>		Beta Lact <b>AB</b>		Beta Cas <b>A2A2</b>

► **HEALTH TRAITS**

SCS	<b>+2,52</b>	SCE	<b>+1,40</b>
PL	<b>+5,00</b>	DCE	<b>+1,30</b>
DPR	<b>+0,00</b>	FI	<b>+0,40</b>



Zaqqa

**Free Haplotypes**  
[i-] [I-] [i-] [I-]

**A2A2**  
BETA CASEIN

► **TYPE TRAITS**

PTAT **+0,12** UDC **+0,15** FLC **-0,62**

Stature				0,62
Strength				-0,43
Body Dept				-0,29
Dairy Form				1,31
Rump Angle				1,89
Thurl Width				0,17
Rear Legs-Side				-0,93
Rear Legs-Rear				-0,63
Foot Angle				-0,24
Feet & Legs Score				-0,37
F. Udder Attachment				-0,15
Rear Udder Height				0,50
Rear Udder Width				0,77
Udder Cleft				0,27
Udder Depth				0,05
Front Teat Placement				-0,04
Rear Teat P. Rear				-0,02
Teat Length				0,24

DG

# SCORPIUS

NL000634724796 - TL - 643HO05171

SEXED SEMEN *Made in Italy*  
**FOEMINA**  
Sexed **ULTRA 4M**

**PELLEGRINO**

**CHARL**

**JEDI**

Topnotch x Router

DG DV Sika ET - GP83

De Volmer Sabine ET



DG Scorpius

**TPI**  
**+2892**

**NET MERIT \$**  
**+917**

**CHEESE MERIT \$**  
**+931**

► **PRODUCTION TRAITS** (79% REL)

Milk	% Fat	Fat	% Protein	Protein
<b>+1122 lbs</b>	<b>+0,14</b>	<b>+83</b>	<b>+0,03</b>	<b>+45</b>
K Cas <b>AA</b>		Beta Lact <b>AA</b>		Beta Cas <b>A1A2</b>

► **HEALTH TRAITS**

SCS	<b>+2,60</b>	SCE	<b>+1,50</b>
PL	<b>+6,70</b>	DCE	<b>+0,90</b>
DPR	<b>+1,30</b>	FI	<b>+1,70</b>



Ladys-Manor Ruby D Shawn-ET

► **TYPE TRAITS**

PTAT **+0,81** UDC **+1,28** FLC **-0,23**

Stature				0,70
Strength				-0,02
Body Dept				-0,11
Dairy Form				0,13
Rump Angle				1,20
Thurl Width				-0,15
Rear Legs-Side				-0,50
Rear Legs-Rear				-0,50
Foot Angle				-0,01
Feet & Legs Score				0,07
F. Udder Attachment				1,41
Rear Udder Height				1,63
Rear Udder Width				1,21
Udder Cleft				0,58
Udder Depth				1,79
Front Teat Placement				0,33
Rear Teat P. Rear				0,30
Teat Length				-0,35

# DG SEPTIMUS Legend

NL000634722428 - TL - 643HO05163



**CAPTAIN** x **SUBZERO** x **DOC**  
 Charl x Sabre x Suami ET x Comestar Laumbia Doc ET

**TPI** +3148    **NET MERIT \$** +1082    **CHEESE MERIT \$** +1100

► **PRODUCTION TRAITS (81% REL)**

Milk	% Fat	Fat	% Protein	Protein
<b>+1260 lbs</b>	<b>+0,26</b>	<b>+124</b>	<b>+0,10</b>	<b>+69</b>
K Cas <b>AB</b>		Beta Lact <b>AA</b>		Beta Cas <b>A2A2</b>

► **HEALTH TRAITS**

SCS	<b>+2,94</b>	SCE	<b>+1,90</b>
PL	<b>+4,40</b>	DCE	<b>+1,80</b>
DPR	<b>+0,30</b>	FI	<b>+0,90</b>

Free Haplotypes



► **TYPE TRAITS**

PTAT **+1,79**    UDC **+1,71**    FLC **+0,86**

Stature					1,51
Strength					-0,20
Body Dept					0,21
Dairy Form					1,82
Rump Angle					1,13
Thurl Width					1,10
Rear Legs-Side					-0,06
Rear Legs-Rear					0,85
Foot Angle					0,35
Feet & Legs Score					1,24
F. Udder Attachment					1,69
Rear Udder Height					2,97
Rear Udder Width					2,13
Udder Cleft					0,46
Udder Depth					2,17
Front Teat Placement					-0,61
Rear Teat P. Rear					-0,26
Teat Length					-0,38

# AL.CO.BIA. INSEME SEIKO

IT034991275895 - ET TL TM TV TY - 234



**MACHONE** x **CASPER** x **JEDI**  
 Milktime x Romero x DG DV Insemè Sandra B+80 x DE Volmer Sabine

**TPI** +2626    **NET MERIT \$** +580    **CHEESE MERIT \$** +593

► **PRODUCTION TRAITS (80% REL)**

Milk	% Fat	Fat	% Protein	Protein
<b>+1626 lbs</b>	<b>-0,08</b>	<b>+40</b>	<b>+0,02</b>	<b>+57</b>
K Cas <b>BB</b>		Beta Lact <b>AA</b>		Beta Cas <b>A1A2</b>

► **HEALTH TRAITS**

SCS	<b>+2,57</b>	SCE	<b>+2,30</b>
PL	<b>+2,90</b>	DCE	<b>+2,60</b>
DPR	<b>-1,80</b>	FI	<b>-1,40</b>



► **TYPE TRAITS**

PTAT **+1,64**    UDC **+1,91**    FLC **+0,25**

Stature					1,30
Strength					0,66
Body Dept					0,73
Dairy Form					1,37
Rump Angle					-0,57
Thurl Width					1,07
Rear Legs-Side					-0,09
Rear Legs-Rear					0,16
Foot Angle					0,65
Feet & Legs Score					0,60
F. Udder Attachment					2,01
Rear Udder Height					2,59
Rear Udder Width					2,55
Udder Cleft					2,04
Udder Depth					1,39
Front Teat Placement					1,67
Rear Teat P. Rear					2,13
Teat Length					-0,86



ISOLABELLA  
INSEME

# SONIK

IT001991379357 - 543HO00289 - aAa 243



Isolabella Inseme Sonik

**MACHONE** × **SOUND SYSTEM** × **FONTAINE**  
Milktime x Romero × Baruf Inseme S.S. Sunrise B+84 × Baruf Fontaine Sunrise MB87

<b>TPI</b> <b>+2705</b>	<b>NET MERIT \$</b> <b>+646</b>	<b>CHEESE MERIT \$</b> <b>+661</b>
----------------------------	------------------------------------	---------------------------------------

► PRODUCTION TRAITS (81% REL)				
Milk <b>+1118 lbs</b>	% Fat <b>+0,09</b>	Fat <b>+69</b>	% Protein <b>+0,07</b>	Protein <b>+54</b>
K Cas <b>AB</b>		Beta Lact <b>AA</b>		Beta Cas <b>A2A2</b>

► HEALTH TRAITS			
SCS	<b>+2,83</b>	SCE	<b>+2,50</b>
PL	<b>+1,80</b>	DCE	<b>+2,50</b>
DPR	<b>-1,80</b>	FI	<b>-1,30</b>



Baruf Fontaine Sunrise V687

Free Haplotypes



► TYPE TRAITS					
PTAT	<b>+1,92</b>	UDC	<b>+1,84</b>	FLC	<b>+0,12</b>

Stature	1,36
Strength	0,68
Body Dept	1,05
Dairy Form	2,38
Rump Angle	-0,14
Thurl Width	1,48
Rear Legs-Side	0,64
Rear Legs-Rear	0,53
Foot Angle	0,36
Feet & Legs Score	0,38
F. Udder Attachment	1,91
Rear Udder Height	2,61
Rear Udder Width	2,54
Udder Cleft	1,68
Udder Depth	1,28
Front Teat Placement	1,48
Rear Teat P. Rear	1,71
Teat Length	-0,35

MIRABELL  
INSEME

# SUPERFAST

IT917992526791 - 543HO00287 - aAa 234



Mirabell Inseme Superfast

**MOTIVATED** × **TOPNOTCH** × **MONTEREY**  
Padawan x Duke × Mirabell TPCH Story × Mirabell MNTR Sulley MB86

<b>TPI</b> <b>+2779</b>	<b>NET MERIT \$</b> <b>+750</b>	<b>CHEESE MERIT \$</b> <b>+769</b>
----------------------------	------------------------------------	---------------------------------------

► PRODUCTION TRAITS (81% REL)				
Milk <b>+1390 lbs</b>	% Fat <b>+0,06</b>	Fat <b>+70</b>	% Protein <b>+0,08</b>	Protein <b>+68</b>
K Cas <b>BE</b>		Beta Lact <b>AB</b>		Beta Cas <b>A1A1</b>

► HEALTH TRAITS			
SCS	<b>+2,78</b>	SCE	<b>+2,20</b>
PL	<b>+3,60</b>	DCE	<b>+2,40</b>
DPR	<b>-0,80</b>	FI	<b>-0,20</b>

► TYPE TRAITS					
PTAT	<b>+1,39</b>	UDC	<b>+0,94</b>	FLC	<b>-0,23</b>

Stature	1,37
Strength	0,66
Body Dept	1,04
Dairy Form	1,81
Rump Angle	-0,86
Thurl Width	1,13
Rear Legs-Side	0,44
Rear Legs-Rear	-0,56
Foot Angle	0,15
Feet & Legs Score	0,27
F. Udder Attachment	0,92
Rear Udder Height	1,81
Rear Udder Width	1,95
Udder Cleft	0,92
Udder Depth	0,63
Front Teat Placement	-0,20
Rear Teat P. Rear	0,39
Teat Length	1,11

DG

# SUVAN

NL000575219715 - 643H005160

 SEXED SEMEN *Made in Italy*  
**FOEMINA**  
 Sexed **ULTRA 4M**


DG Suvan

**CAPTAIN**

Charl x Sabre

X

**CHARL**

RGD Sunga ET

X

**JEDI**

Sheaola Jedi 6071-ET

**TPI**  
**+3076**
**NET MERIT \$**  
**+1179**
**CHEESE MERIT \$**  
**+1191**
**PRODUCTION TRAITS (81% REL)**

Milk	% Fat	Fat	% Protein	Protein
<b>+1504 lbs</b>	<b>+0,23</b>	<b>+125</b>	<b>+0,04</b>	<b>+58</b>
K Cas <b>AA</b>		Beta Lact <b>AA</b>		Beta Cas <b>A2A2</b>

**HEALTH TRAITS**

SCS	<b>+2,79</b>	SCE	<b>+2,10</b>
PL	<b>+5,70</b>	DCE	<b>+2,30</b>
DPR	<b>+1,30</b>	FI	<b>+2,10</b>

**Free Haplotypes**  

**TYPE TRAITS**
**PTAT +0,44 UDC +0,90 FLC +0,34**

Stature	-0,94
Strength	-1,68
Body Dept	-1,23
Dairy Form	1,01
Rump Angle	0,33
Thurl Width	-0,17
Rear Legs-Side	0,05
Rear Legs-Rear	-0,14
Foot Angle	-1,22
Feet & Legs Score	0,29
F. Udder Attachment	0,31
Rear Udder Height	1,52
Rear Udder Width	1,06
Udder Cleft	0,20
Udder Depth	0,25
Front Teat Placement	0,18
Rear Teat P. Rear	0,40
Teat Length	-1,78

SABBIONA  
INSEME

# TANTUM

IT098990744592 - 543HO00249 - aAa 234

 SEXED SEMEN *Made in Italy*  
**FOEMINA**  
 Sexed **ULTRA 4M**


Sabbiona Inseme Tantum

**DISCJOCKEY**

Fortune x Monterey

X

**APPLICABLE**

Sabbiona Tania EX92

**MASCALESE**Go-Farm Tashira  
MB89
**TPI**  
**+2260**
**NET MERIT \$**  
**+68**
**CHEESE MERIT \$**  
**+81**
**PRODUCTION TRAITS (82% REL)**

Milk	% Fat	Fat	% Protein	Protein
<b>-279 lbs</b>	<b>+0,04</b>	<b>-1,00</b>	<b>+0,06</b>	<b>+9,00</b>
K Cas <b>AE</b>		Beta Lact <b>AA</b>		Beta Cas <b>A1A1</b>

**HEALTH TRAITS**

SCS	<b>+2,85</b>	SCE	<b>+2,60</b>
PL	<b>+1,00</b>	DCE	<b>+2,40</b>
DPR	<b>+0,00</b>	FI	<b>+0,10</b>



Sabbiona (Ciserani) Applicable (VP)

**TYPE TRAITS**
**PTAT +1,83 UDC +2,78 FLC +0,32**

Stature	2,47
Strength	1,13
Body Dept	0,33
Dairy Form	-0,62
Rump Angle	0,41
Thurl Width	1,22
Rear Legs-Side	-2,32
Rear Legs-Rear	1,23
Foot Angle	2,71
Feet & Legs Score	0,69
F. Udder Attachment	3,86
Rear Udder Height	3,48
Rear Udder Width	2,00
Udder Cleft	1,99
Udder Depth	4,47
Front Teat Placement	0,84
Rear Teat P. Rear	1,07
Teat Length	-0,70

PISCHI  
INSEME

# TIALOCO

IT016990900821 - 543HO00295 - aAa 153



Pischi Inseme Tialoco

**MACHONE** × **REDROCK** × **VANHALEN**  
 Milktime x Romero × Inseme Clara MB86 × Vanhalen MB87

<b>TPI</b> <b>+2733</b>	<b>NET MERIT \$</b> <b>+693</b>	<b>CHEESE MERIT \$</b> <b>+709</b>
----------------------------	------------------------------------	---------------------------------------

► PRODUCTION TRAITS (81% REL)				
Milk <b>+1105 lbs</b>	% Fat <b>-0,05</b>	Fat <b>+27</b>	% Protein <b>+0,03</b>	Protein <b>+43</b>
K Cas <b>BB</b>		Beta Lact <b>AA</b>		Beta Cas <b>A1A2</b>

► HEALTH TRAITS			
SCS	<b>+2,49</b>	SCE	<b>+1,70</b>
PL	<b>+5,90</b>	DCE	<b>+1,40</b>
DPR	<b>+1,80</b>	FI	<b>+1,80</b>



Dam Inseme Clara

Free Haplotypes  
i·i·i·i·i



► TYPE TRAITS					
PTAT	<b>+1,66</b>	UDC	<b>2,06</b>	FLC	<b>+0,08</b>

Stature				<b>1,05</b>
Strength				<b>0,46</b>
Body Dept				<b>0,54</b>
Dairy Form				<b>1,19</b>
Rump Angle				<b>1,05</b>
Thurl Width				<b>0,57</b>
Rear Legs-Side				<b>-1,05</b>
Rear Legs-Rear				<b>0,07</b>
Foot Angle				<b>0,68</b>
Feet & Legs Score				<b>0,37</b>
F. Udder Attachment				<b>2,49</b>
Rear Udder Height				<b>2,57</b>
Rear Udder Width				<b>2,25</b>
Udder Cleft				<b>1,51</b>
Udder Depth				<b>1,86</b>
Front Teat Placement				<b>1,22</b>
Rear Teat P. Rear				<b>0,65</b>
Teat Length				<b>0,09</b>

-3 0 +0,5 +1 +1,5

LUIS-OOH  
INSEME

# TORTU

IT018990253937 - TL TM TV TY - 324



Luis-Doh Guarantees Frisia - Madre di Tortu

**MOJO** × **GUARANTEE** × **ARAXIS**  
 Medley x Jedi × Luis-Ooh Guarantee Frisia × Ekkel PG Jill B+83

<b>TPI</b> <b>+2724</b>	<b>NET MERIT \$</b> <b>742</b>	<b>CHEESE MERIT \$</b> <b>764</b>
----------------------------	-----------------------------------	--------------------------------------

► PRODUCTION TRAITS (82% REL)				
Milk <b>+829 lbs</b>	% Fat <b>+0,05</b>	Fat <b>+46</b>	% Protein <b>+0,09</b>	Protein <b>+51</b>
K Cas <b>BB</b>		Beta Lact <b>AA</b>		Beta Cas <b>A1A2</b>

► HEALTH TRAITS			
SCS	<b>+2,66</b>	SCE	<b>+2,20</b>
PL	<b>+5,40</b>	DCE	<b>+2,20</b>
DPR	<b>+1,30</b>	FI	<b>+1,90</b>

► TYPE TRAITS					
PTAT	<b>+1,04</b>	UDC	<b>+1,09</b>	FLC	<b>-0,36</b>

Stature				<b>1,74</b>
Strength				<b>0,45</b>
Body Dept				<b>0,17</b>
Dairy Form				<b>0,67</b>
Rump Angle				<b>1,17</b>
Thurl Width				<b>1,00</b>
Rear Legs-Side				<b>-0,77</b>
Rear Legs-Rear				<b>-0,38</b>
Foot Angle				<b>0,69</b>
Feet & Legs Score				<b>0,13</b>
F. Udder Attachment				<b>1,39</b>
Rear Udder Height				<b>1,17</b>
Rear Udder Width				<b>1,42</b>
Udder Cleft				<b>1,12</b>
Udder Depth				<b>2,17</b>
Front Teat Placement				<b>0,10</b>
Rear Teat P. Rear				<b>0,62</b>
Teat Length				<b>-0,68</b>

-3 0 +0,5 +1 +1,5





DELLAROSSA  
INSEME

## WODOO

IT004992267916 - 543HO00299 - aAa 234

## ZAZZLE

Marius x Topshot

## ACHIEVER

Juniper-Jlc Achievr  
Wish-ET

## DELTA

Ttm Delta Wonder  
Woman-ET MB88TPI  
**+2855**NET MERIT \$  
**872**CHEESE MERIT \$  
**883**

Dellarossa Inseme Wodoo

## ► PRODUCTION TRAITS (82% REL)

Milk	% Fat	Fat	% Protein	Protein
<b>+1171 lbs</b>	<b>+0,22</b>	<b>+110</b>	<b>+0,05</b>	<b>+50</b>
K Cas <b>BE</b>		Beta Lact <b>AB</b>		Beta Cas <b>A1A1</b>

## ► HEALTH TRAITS

SCS	<b>+2,87</b>	SCE	<b>+1,80</b>
PL	<b>+2,20</b>	DCE	<b>+1,60</b>
DPR	<b>-2,40</b>	FI	<b>-1,70</b>

Free Haplotypes  
[i-][i-][i-]

## ► TYPE TRAITS

PTAT **+1,62** UDC **+1,50** FLC **+0,22**

Stature				1,06
Strength				-0,09
Body Dept				0,62
Dairy Form				2,54
Rump Angle				0,75
Thurl Width				0,79
Rear Legs-Side				0,51
Rear Legs-Rear				-0,21
Foot Angle				0,24
Feet & Legs Score				0,63
F. Udder Attachment				1,51
Rear Udder Height				2,27
Rear Udder Width				2,35
Udder Cleft				0,90
Udder Depth				0,69
Front Teat Placement				1,18
Rear Teat P. Rear				1,35
Teat Length				-0,16

ROSS, INSEME

## ZUSMAN

IT003990162540 - ET TL TM TV TY - 643HO00314

SEXED SEMEN *Made in Italy*  
**FOEMINA**  
Sexed **ULTRA 4M**

## CAPTIVATING

Captivating x Pursuit

## PURSUIT

Claynook Zeeta  
Pursuit ET

## DUKE

Morningview Duke  
Zip ET - GP84TPI  
**+2959**NET MERIT \$  
**917**CHEESE MERIT \$  
**930**

Ross, Inseme Zusman

## ► PRODUCTION TRAITS (82% REL)

Milk	% Fat	Fat	% Protein	Protein
<b>+1584 lbs</b>	<b>+0,09</b>	<b>+87</b>	<b>+0,06</b>	<b>+67</b>
K Cas <b>AA</b>		Beta Lact <b>BB</b>		Beta Cas <b>A2A2</b>

## ► HEALTH TRAITS

SCS	<b>+2,91</b>	SCE	<b>+2,20</b>
PL	<b>+4,10</b>	DCE	<b>+1,90</b>
DPR	<b>-0,80</b>	FI	<b>+0,10</b>

## ► TYPE TRAITS

PTAT **+1,92** UDC **+1,52** FLC **+0,45**

Stature				2,61
Strength				1,21
Body Dept				1,18
Dairy Form				2,15
Rump Angle				1,73
Thurl Width				1,81
Rear Legs-Side				-0,67
Rear Legs-Rear				0,98
Foot Angle				1,38
Feet & Legs Score				0,95
F. Udder Attachment				2,20
Rear Udder Height				2,12
Rear Udder Width				2,32
Udder Cleft				1,33
Udder Depth				1,96
Front Teat Placement				1,60
Rear Teat P. Rear				1,77
Teat Length				-0,99



# RED AND RF TOP LIST

Naab Code	Name	Sire	Mgs	A2A2	TPI	NM\$	CM\$	PTA Milk	PTA Fat	% Fat	PTA Pro	% Pro	SCS	PL	PTA DPR	SCE	PTA Type	UDC	FLC
643H005170	<b>ASTER RC</b>	CAPTAIN	RONALD		<b>2996</b>	1006	1019	1362	100	0,16	57	0,05	2,76	4,70	0,20	1,60	1,40	1,59	1,01
643H005259	<b>PALMA RC</b>	CRISALIS RC	CHARL		<b>2894</b>	961	979	1588	86	0,08	70	0,07	2,72	4,80	0,20	1,50	0,61	0,37	0,01
543H000292	<b>KING RED P</b>	GIO P	GYWER	A2A2	<b>2776</b>	747	762	1096	54	0,04	50	0,05	2,71	4,60	1,50	1,30	0,91	1,21	1,35
543H000306	<b>ATHOS RED</b>	FREESTYLE	GYWER		<b>2679</b>	737	748	907	44	0,03	33	0,02	2,61	6,40	1,70	1,20	0,46	1,07	0,96
543H000255	<b>ALCEROSSO</b>	SOLITAIR P	MISSIO P		<b>2661</b>	766	779	1066	67	0,09	52	0,06	2,92	3,80	-1,20	1,80	0,92	1,07	0,39
543H000275	<b>DIAVOLO ROSSO</b>	BARONE ROSSO	GYWER	A2A2	<b>2626</b>	540	553	1191	53	0,02	51	0,05	2,76	2,10	1,40	1,50	1,01	0,73	0,13
543H000272	<b>KYRIOS FR</b>	STRADIVARI	SPARK RED		<b>2624</b>	528	537	1463	20	-0,12	45	0,00	2,61	4,70	1,40	1,80	1,42	1,43	0,48
543H000282	<b>WALLY RED P</b>	SOLITAIR P	ABI RED	A2A2	<b>2617</b>	675	685	885	67	0,11	44	0,06	3,01	3,30	-2,10	1,60	1,04	1,19	0,86
543H000219	<b>BARONE ROSSO</b>	SANTORIUS	BREAKER RC		<b>2604</b>	452	466	1130	49	0,02	55	0,07	2,89	1,30	-1,30	2,00	1,85	1,90	0,51
543H000271	<b>RITMO FR</b>	RONALD	ACHIEVER		<b>2580</b>	542	555	688	54	0,10	36	0,05	2,76	2,80	-1,60	2,10	1,47	1,77	0,37
543H000253	<b>APPIUS RED P</b>	SOLITAIR P	APPRENTICE		<b>2652</b>	763	780	581	39	0,06	41	0,08	2,82	5,80	0,90	1,40	0,34	1,16	1,21
643H005693	<b>FLINTCOMBE PP</b>	MCDONALD P	MIRAND		<b>2480</b>	359	356	822	31	0,00	12	-0,05	2,79	2,60	-1,10	1,90	2,70	2,69	1,17
543H000246	<b>SOGNO ROSSO</b>	LUCKY PP	KINGBOY	A2A2	<b>2321</b>	319	338	-75	22	0,09	18	0,07	2,65	2,90	-0,30	1,80	0,85	0,90	0,25

USDA 12/2023

A **RED** dream



**Polled**

IT017992284863 - 543HO00255 - aAa 342

SEXED SEMEN *Made in Italy*  
**FOEMINA**  
Sexed **ULTRA**

ZANI INSEME

**ALCEROSSO PR****SOLITAIR P**

Mr Salvatore x Balisto

**MISSION P**Zani Mission P  
Ramina MB85**SILVER**Zani Silver Ambra  
MB86**TPI**  
**+2661****NET MERIT \$**  
**+766****CHEESE MERIT \$**  
**+779**

Zani Inseme Alcerosso

**PRODUCTION TRAITS (81% REL)**

Milk	% Fat	Fat	% Protein	Protein
<b>+1066 lbs</b>	<b>+0,09</b>	<b>+67</b>	<b>+0,06</b>	<b>+52</b>
K Cas <b>AB</b>		Beta Lact <b>AA</b>		Beta Cas <b>A1A2</b>

**HEALTH TRAITS**

SCS	<b>+2,92</b>	SCE	<b>+1,80</b>
PL	<b>+3,80</b>	DCE	<b>+2,30</b>
DPR	<b>-1,20</b>	FI	<b>-1,00</b>

**Free Haplotypes**  
[i-][i-][i-]**TYPE TRAITS**PTAT **+0,92** UDC **+1,07** FLC **+0,39**

Stature	0,22
Strength	-0,61
Body Dept	-0,14
Dairy Form	1,54
Rump Angle	-0,16
Thurl Width	0,22
Rear Legs-Side	1,16
Rear Legs-Rear	0,40
Foot Angle	-0,07
Feet & Legs Score	0,49
F. Udder Attachment	0,84
Rear Udder Height	1,62
Rear Udder Width	1,55
Udder Cleft	0,56
Udder Depth	0,29
Front Teat Placement	0,39
Rear Teat P. Rear	1,25
Teat Length	0,03

-3 0 +0,5 +1 +1,5

**Polled**

IT018990237944 - 543HO00253 - aAa 432

SEXED SEMEN *Made in Italy*  
**FOEMINA**  
Sexed **ULTRA 4M**LUIS-OOH  
INSEME**APPIUS RED PR****SOLITAIR P**

Mr Salvatore x Balisto

**APPRENTICE**

Luis-Ooh Suning

**DELTA**Hermosa Delta Luigia  
B+82**TPI**  
**+2652****NET MERIT \$**  
**+763****CHEESE MERIT \$**  
**+780**

Luis-Ooh Inseme Appius Red Cd

**PRODUCTION TRAITS (81% REL)**

Milk	% Fat	Fat	% Protein	Protein
<b>+581 lbs</b>	<b>+0,06</b>	<b>+39</b>	<b>+0,08</b>	<b>+41</b>
K Cas <b>BE</b>		Beta Lact <b>AA</b>		Beta Cas <b>A1A1</b>

**HEALTH TRAITS**

SCS	<b>+2,82</b>	SCE	<b>+1,40</b>
PL	<b>+5,80</b>	DCE	<b>+1,70</b>
DPR	<b>+0,90</b>	FI	<b>+1,00</b>

**TYPE TRAITS**PTAT **+0,34** UDC **+1,16** FLC **+1,21**

Stature	-0,86
Strength	-1,22
Body Dept	-1,38
Dairy Form	-0,02
Rump Angle	0,22
Thurl Width	-0,04
Rear Legs-Side	-0,12
Rear Legs-Rear	0,96
Foot Angle	0,35
Feet & Legs Score	0,98
F. Udder Attachment	1,07
Rear Udder Height	1,18
Rear Udder Width	0,97
Udder Cleft	0,42
Udder Depth	0,83
Front Teat Placement	0,23
Rear Teat P. Rear	0,68
Teat Length	-0,78

-3 0 +0,5 +1 +1,5



DG **ASTER RC**

NL000634722745 - 643HO05170



**CAPTAIN** × **RONALD** × **ARGO**  
 Charl x Sabre DG OH Audrey ET OH DG Agrorio Red ET

<b>TPI</b> +2996	<b>NET MERIT \$</b> 1006	<b>CHEESE MERIT \$</b> 1019
---------------------	-----------------------------	--------------------------------

► **PRODUCTION TRAITS (81% REL)**

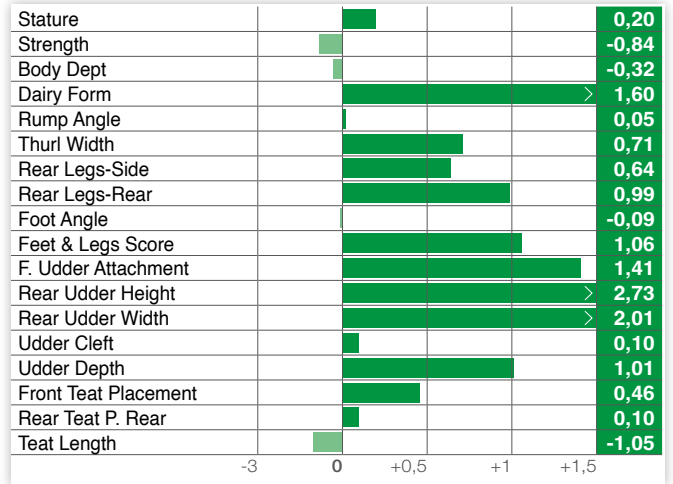
Milk <b>+1362 lbs</b>	% Fat <b>+0,16</b>	Fat <b>+100</b>	% Protein <b>+0,05</b>	Protein <b>+57</b>
K Cas <b>AB</b>		Beta Lact <b>AA</b>		Beta Cas <b>A1A2</b>

► **HEALTH TRAITS**

SCS	<b>+2,76</b>	SCE	<b>+1,60</b>
PL	<b>+4,70</b>	DCE	<b>+2,10</b>
DPR	<b>+0,20</b>	FI	<b>+0,60</b>

► **TYPE TRAITS**

PTAT	<b>+1,40</b>	UDC	<b>+1,59</b>	FLC	<b>+1,01</b>
------	--------------	-----	--------------	-----	--------------



Free Haplotypes  
[i-][i-][i-]

ISOLABELLA INSEME **ATHOS RED R**

IT001991454481 - 543HO00306



**FREESTYLE-RED** × **GYWER** × **APPRENTICE**  
 Gywer x Will Born Luis-Ooh Inseme Brillante Red Luis-Ooh Suning ET

<b>TPI</b> +2679	<b>NET MERIT \$</b> +737	<b>CHEESE MERIT \$</b> +748
---------------------	-----------------------------	--------------------------------

► **PRODUCTION TRAITS (79% REL)**

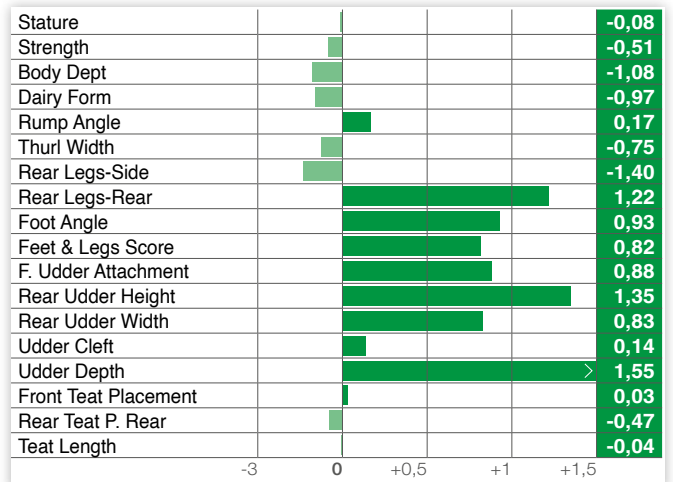
Milk <b>+907 lbs</b>	% Fat <b>+0,03</b>	Fat <b>+44</b>	% Protein <b>+0,02</b>	Protein <b>+33</b>
K Cas <b>AA</b>		Beta Lact <b>AA</b>		Beta Cas <b>A1A2</b>

► **HEALTH TRAITS**

SCS	<b>+2,61</b>	SCE	<b>+1,20</b>
PL	<b>+6,40</b>	DCE	<b>+1,50</b>
DPR	<b>+1,70</b>	FI	<b>+1,90</b>

► **TYPE TRAITS**

PTAT	<b>+0,46</b>	UDC	<b>+1,07</b>	FLC	<b>+0,96</b>
------	--------------	-----	--------------	-----	--------------



Free Haplotypes  
[i-][i-][i-]

RIOZZO  
INSEME

# DIABOLO ROSSO R

IT015990572116 - 543HO00275 - aAa 234

SEXED SEMEN *Made in Italy*  
**FOEMINA**  
Sexed **ULTRA 4M****BARONE ROSSO**

Santorius x Breaker

**GYWER**

Weh 22611

**KERRIGAN**

Weh Jacky

**TPI**  
+2626

**NET MERIT \$**  
+540

**CHEESE MERIT \$**  
+553

**PRODUCTION TRAITS (80% REL)**

Milk	% Fat	Fat	% Protein	Protein
<b>+1191 lbs</b>	<b>+0,02</b>	<b>+53</b>	<b>+0,05</b>	<b>+51</b>
K Cas <b>AB</b>		Beta Lact <b>AA</b>		Beta Cas <b>A2A2</b>

**HEALTH TRAITS**

SCS	<b>+2,76</b>	SCE	<b>+1,50</b>
PL	<b>+2,10</b>	DCE	<b>+2,30</b>
DPR	<b>+1,40</b>	FI	<b>+1,80</b>

**TYPE TRAITS**
**PTAT +1,01 UDC +0,73 FLC +0,13**

Stature	1,11
Strength	0,81
Body Dept	0,33
Dairy Form	-0,09
Rump Angle	-0,61
Thurl Width	0,23
Rear Legs-Side	-0,58
Rear Legs-Rear	0,46
Foot Angle	0,84
Feet & Legs Score	0,31
F. Udder Attachment	1,41
Rear Udder Height	1,49
Rear Udder Width	1,29
Udder Cleft	-0,26
Udder Depth	1,28
Front Teat Placement	-0,83
Rear Teat P. Rear	-1,22
Teat Length	1,70

K&L RM  
INSEME

# BARONE ROSSO R

NL000627599682 - 543HO00219 - aAa 342

SEXED SEMEN *Made in Italy*  
**FOEMINA**  
Sexed **ULTRA 4M****SANTORIUS**

Jedi x Kingboy

**BREAKER**

K&amp;L RM Soraya

**BREKEM**

Saga

**TPI**  
+2604

**NET MERIT \$**  
+452

**CHEESE MERIT \$**  
+466

**PRODUCTION TRAITS (88% REL)**

Milk	% Fat	Fat	% Protein	Protein
<b>+1130 lbs</b>	<b>+0,02</b>	<b>+49</b>	<b>+0,07</b>	<b>+55</b>
K Cas <b>BB</b>		Beta Lact <b>AA</b>		Beta Cas <b>A1A2</b>

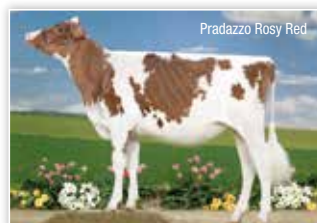
**HEALTH TRAITS**

SCS	<b>+2,89</b>	SCE	<b>+2,00</b>
PL	<b>+1,30</b>	DCE	<b>+2,10</b>
DPR	<b>-1,30</b>	FI	<b>-0,90</b>

**TYPE TRAITS**
**PTAT +1,85 UDC +1,90 FLC +0,51**

Stature	1,22
Strength	1,04
Body Dept	0,69
Dairy Form	0,53
Rump Angle	-1,26
Thurl Width	0,90
Rear Legs-Side	-0,62
Rear Legs-Rear	0,92
Foot Angle	1,58
Feet & Legs Score	0,63
F. Udder Attachment	2,96
Rear Udder Height	2,63
Rear Udder Width	2,22
Udder Cleft	0,64
Udder Depth	2,12
Front Teat Placement	-0,21
Rear Teat P. Rear	-0,37
Teat Length	1,20

Pradazzo Rosy Red


**Free Haplotypes**  


New

DG

# FLINTCOMBE RPP

NL000634723724 - 643HO05693

SEXED SEMEN *Made in Italy*  
**FOEMINA**  
Sexed **ULTRA 4M**

**MCDONALD P RED** × **MIRAND PP RF** × **KING DOC**  
Ronald x Pat Red × Dgf Fanta × NH DOC FUN VG86



**TPI** +2480    **NET MERIT \$** +359    **CHEESE MERIT \$** +356

▶ PRODUCTION TRAITS (79% REL)				
Milk	% Fat	Fat	% Protein	Protein
<b>+822 lbs</b>	<b>+0,00</b>	<b>+31</b>	<b>-0,05</b>	<b>+12</b>
K Cas <b>AB</b>		Beta Lact <b>AB</b>		Beta Cas <b>A1A2</b>

▶ HEALTH TRAITS			
SCS	<b>+2,79</b>	SCE	<b>+1,90</b>
PL	<b>+2,60</b>	DCE	<b>+2,20</b>
DPR	<b>-1,10</b>	FI	<b>-0,80</b>



▶ TYPE TRAITS			
PTAT	<b>+2,70</b>	UDC	<b>+2,69</b>
FLC		<b>+1,17</b>	

Stature	>	2,29
Strength	>	0,93
Body Dept	>	1,37
Dairy Form	>	1,66
Rump Angle	>	0,04
Thurl Width	>	1,99
Rear Legs-Side	>	0,23
Rear Legs-Rear	>	1,60
Foot Angle	>	2,02
Feet & Legs Score	>	1,52
F. Udder Attachment	>	3,26
Rear Udder Height	>	3,90
Rear Udder Width	>	3,59
Udder Cleft	>	1,43
Udder Depth	>	2,58
Front Teat Placement	>	1,39
Rear Teat P. Rear	>	1,75
Teat Length	>	-0,93

Polled

BAS FARM  
INSEME

# KING RED PR

IT001991441926 - 543HO00292 - aAa 135

SEXED SEMEN *Made in Italy*  
**FOEMINA**  
Sexed **ULTRA 4M**

**GIO P RF** × **GYWER** × **KERRIGAN**  
Gywer x Lighter × Weh 22611 × Weh Jacky



**TPI** +2776    **NET MERIT \$** +747    **CHEESE MERIT \$** +762

▶ PRODUCTION TRAITS (80% REL)				
Milk	% Fat	Fat	% Protein	Protein
<b>+1096 lbs</b>	<b>+0,04</b>	<b>+54</b>	<b>+0,05</b>	<b>+50</b>
K Cas <b>AA</b>		Beta Lact <b>AA</b>		Beta Cas <b>A2A2</b>

▶ HEALTH TRAITS			
SCS	<b>+2,71</b>	SCE	<b>+1,30</b>
PL	<b>+4,60</b>	DCE	<b>+2,00</b>
DPR	<b>+1,50</b>	FI	<b>+1,70</b>

▶ TYPE TRAITS			
PTAT	<b>+0,91</b>	UDC	<b>+1,21</b>
FLC		<b>+1,35</b>	

Stature	>	0,09
Strength	>	-0,38
Body Dept	>	-0,55
Dairy Form	>	-0,29
Rump Angle	>	-0,09
Thurl Width	>	-0,46
Rear Legs-Side	>	-1,32
Rear Legs-Rear	>	1,56
Foot Angle	>	0,95
Feet & Legs Score	>	1,26
F. Udder Attachment	>	1,07
Rear Udder Height	>	1,72
Rear Udder Width	>	1,13
Udder Cleft	>	0,42
Udder Depth	>	1,29
Front Teat Placement	>	0,23
Rear Teat P. Rear	>	-0,29
Teat Length	>	-0,15

Free Haplotypes  
[i]-[i]-[i]





GEGANIA  
INSEME

# KYRIOS RF

IT028990476890 - 543HO00272 - aAa 243



**STRADIVARI**

Dream x Sound System

**SPARK RED**

Prismagen Inseme Red-Kiss B+83

**BATTLECRY**

WIL K26

<b>TPI</b> <b>+2624</b>	<b>NET MERIT \$</b> <b>+528</b>	<b>CHEESE MERIT \$</b> <b>+537</b>
----------------------------	------------------------------------	---------------------------------------

**PRODUCTION TRAITS (80% REL)**

Milk <b>+1463 lbs</b>	% Fat <b>-0,12</b>	Fat <b>+20</b>	% Protein <b>+0,00</b>	Protein <b>+45</b>
K Cas <b>AB</b>		Beta Lact <b>AA</b>		Beta Cas <b>A1A2</b>

**HEALTH TRAITS**

SCS	<b>+2,61</b>	SCE	<b>+1,80</b>
PL	<b>+4,70</b>	DCE	<b>+1,70</b>
DPR	<b>+1,40</b>	FI	<b>+1,60</b>



**TYPE TRAITS**

PTAT **+1,42** UDC **+1,43** FLC **+0,48**

Stature	2,50
Strength	0,66
Body Dept	0,30
Dairy Form	0,55
Rump Angle	0,14
Thurl Width	1,49
Rear Legs-Side	-0,65
Rear Legs-Rear	0,97
Foot Angle	1,99
Feet & Legs Score	0,92
F. Udder Attachment	2,21
Rear Udder Height	2,13
Rear Udder Width	1,64
Udder Cleft	0,38
Udder Depth	2,97
Front Teat Placement	-0,08
Rear Teat P. Rear	-0,46
Teat Length	0,45

DG

# PALMA RC

NL000591604711 - TL TV TY RF RC - 643HO05259



**CRISALIS**

Gywer Rdc x Salvatore RC

**CHARL**

DG Pearly ET

**JEDI**

Pine-Tree 1684 Jedi 7138-ET

<b>TPI</b> <b>+2894</b>	<b>NET MERIT \$</b> <b>+961</b>	<b>CHEESE MERIT \$</b> <b>+979</b>
----------------------------	------------------------------------	---------------------------------------

**PRODUCTION TRAITS (79% REL)**

Milk <b>+1588 lbs</b>	% Fat <b>+0,08</b>	Fat <b>+86</b>	% Protein <b>+0,07</b>	Protein <b>+70</b>
K Cas <b>AB</b>		Beta Lact <b>AA</b>		Beta Cas <b>A1A2</b>

**HEALTH TRAITS**

SCS	<b>+2,72</b>	SCE	<b>+1,50</b>
PL	<b>+4,80</b>	DCE	<b>+1,90</b>
DPR	<b>+0,20</b>	FI	<b>+0,70</b>



**TYPE TRAITS**

PTAT **+0,61** UDC **+0,37** FLC **+0,01**

Stature	0,92
Strength	-0,04
Body Dept	0,08
Dairy Form	1,02
Rump Angle	-0,02
Thurl Width	0,61
Rear Legs-Side	0,07
Rear Legs-Rear	0,05
Foot Angle	0,25
Feet & Legs Score	0,25
F. Udder Attachment	0,38
Rear Udder Height	0,74
Rear Udder Width	0,82
Udder Cleft	0,46
Udder Depth	0,40
Front Teat Placement	0,43
Rear Teat P. Rear	0,29
Teat Length	-0,66

ISOLABELLA  
INSEME

# RITMO RF

IT001991322672 - 543HO00271 - aAa 243

SEXED SEMEN *Made in Italy*  
**FOEMINA**  
Sexed **ULTRA 4M**



Isolabella Inseme Ritmo

**RONALD RF**

Salvatore x Silver

**ACHIEVER**

Luis-Ooh Perrotta

**DOORSOPEN**

De Crob Rita 0077  
B+82

**TPI**  
**+2580**

**NET MERIT \$**  
**+542**

**CHEESE MERIT \$**  
**+555**

► **PRODUCTION TRAITS** (82% REL)

Milk	% Fat	Fat	% Protein	Protein
<b>+688 lbs</b>	<b>+0,10</b>	<b>+54</b>	<b>+0,05</b>	<b>+36</b>
K Cas <b>BB</b>		Beta Lact <b>AB</b>		Beta Cas <b>A1A2</b>

► **HEALTH TRAITS**

SCS	<b>+2,76</b>	SCE	<b>+2,10</b>
PL	<b>+2,80</b>	DCE	<b>+2,80</b>
DPR	<b>-1,60</b>	FI	<b>-1,10</b>

► **TYPE TRAITS**

PTAT **+1,47** UDC **+1,77** FLC **+0,37**

Stature	1,84
Strength	0,28
Body Dept	0,59
Dairy Form	1,11
Rump Angle	0,19
Thurl Width	1,09
Rear Legs-Side	-0,08
Rear Legs-Rear	0,81
Foot Angle	0,98
Feet & Legs Score	0,69
F. Udder Attachment	2,40
Rear Udder Height	2,21
Rear Udder Width	1,72
Udder Cleft	1,13
Udder Depth	2,60
Front Teat Placement	2,17
Rear Teat P. Rear	1,59
Teat Length	-1,10

Free **Haplotypes**  
i-1|1-1



**Polled**

AIMONETTA  
INSEME

# SOGNO ROSSO PR

IT006990129591 - 543HO00246 - aAa 234

SEXED SEMEN *Made in Italy*  
**FOEMINA**  
Sexed **ULTRA 4M**



Aimonetta Inseme Sogno Rosso

**LUCKY**

Jax P x Mogul

**KINGBOY**

Lesperron Kingboy  
Santana MB85

**NUMERO UNO**

Josey-Llc Sangaria  
MB85

**TPI**  
**+2321**

**NET MERIT \$**  
**+319**

**CHEESE MERIT \$**  
**+338**

► **PRODUCTION TRAITS** (88% REL)

Milk	% Fat	Fat	% Protein	Protein
<b>-75 lbs</b>	<b>+0,09</b>	<b>+22</b>	<b>+0,07</b>	<b>+18</b>
K Cas <b>AB</b>		Beta Lact <b>AB</b>		Beta Cas <b>A2A2</b>

► **HEALTH TRAITS**

SCS	<b>+2,65</b>	SCE	<b>+1,80</b>
PL	<b>+2,90</b>	DCE	<b>+2,00</b>
DPR	<b>-0,30</b>	FI	<b>+0,10</b>

► **TYPE TRAITS**

PTAT **+0,85** UDC **+0,90** FLC **+0,25**

Stature	1,29
Strength	0,77
Body Dept	0,84
Dairy Form	0,35
Rump Angle	1,13
Thurl Width	0,62
Rear Legs-Side	0,03
Rear Legs-Rear	0,30
Foot Angle	1,00
Feet & Legs Score	0,52
F. Udder Attachment	1,29
Rear Udder Height	1,47
Rear Udder Width	0,79
Udder Cleft	0,49
Udder Depth	1,50
Front Teat Placement	0,41
Rear Teat P. Rear	-0,04
Teat Length	0,34

Free **Haplotypes**  
i-1|1-1



Bocfarm Sogno Rosso Flamma Red

**Polled**

IT098990790444 - 543HO00282 - aAa 423



DEL SANTO  
INSEME

# WALLY RED PR



Del Santo Inseme Wally Red P

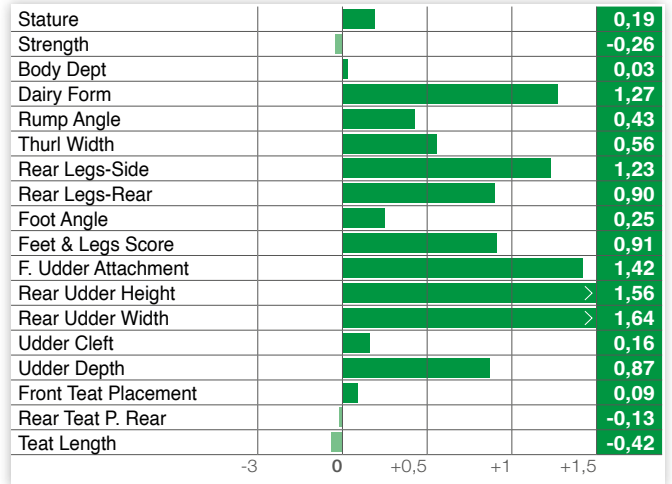
**SOLITAIR P** × **ABI RED PP** × **IMPRESSION**  
 Mr Salvatore x Balisto × Del Santo Barletta MB88 × Del Santo Sailsa EX90

**TPI** +2617      **NET MERIT \$** +675      **CHEESE MERIT \$** +685

▶ PRODUCTION TRAITS (81% REL)				
Milk	% Fat	Fat	% Protein	Protein
<b>+885 lbs</b>	<b>+0,11</b>	<b>+67</b>	<b>+0,06</b>	<b>+44</b>
K Cas <b>BB</b>		Beta Lact <b>AA</b>		Beta Cas <b>A2A2</b>

▶ HEALTH TRAITS			
SCS	<b>+3,01</b>	SCE	<b>+1,60</b>
PL	<b>+3,30</b>	DCE	<b>+2,00</b>
DPR	<b>-2,10</b>	FI	<b>-1,40</b>

▶ TYPE TRAITS			
PTAT	<b>+1,04</b>	UDC	<b>+1,19</b>
FLC	<b>+0,86</b>		



Free Haplotypes



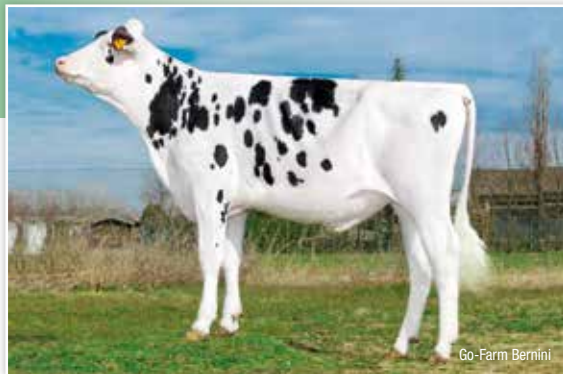
## GTPI PROVEN TOP LIST

Naab Code	Name	Sire	Mgs	A2A2	TPI	NM\$	CM\$	PTA Milk	PTA Fat	% Fat	PTA Pro	% Pro	SGS	PL	PTA DPR	SCE	PTA Type	UDC	FLC
543HO00221	EMERITO	ALTAMONTOYA	JEDI		2641	659	666	2189	55	-0,10	73	0,02	2,85	3,40	-2,80	2,10	1,37	0,86	-0,67
543HO00216	BERNINI	GUARANTEE	ALTAHOTROD	A2A2	2697	735	751	534	60	0,14	28	0,04	2,53	5,40	-0,10	2,00	1,06	1,90	0,18
543HO00163	LIVER	SUPERHERO	MISSOURI	A2A2	2643	635	644	1421	41	-0,05	46	0,01	2,63	3,80	1,60	2,20	0,83	1,22	-0,17
543HO00194	EDUARDO	PERSEUS	BATTLECRY	A2A2	2611	561	571	996	37	0,00	33	0,01	2,59	4,50	2,80	1,90	1,02	1,24	-0,44
543HO00192	SORRENTO	HOTLINE	BATTLECRY	A2A2	2577	475	494	485	79	0,21	38	0,08	2,74	-0,60	-2,80	2,00	1,44	1,48	1,13
543HO00219	BARONE ROSSO	SANTORIUS	BREAKER RC		2604	452	466	1130	49	0,02	55	0,07	2,89	1,30	-1,30	2,00	1,85	1,90	0,51
543HO00086	SOUND SYSTEM	SILVER	SUPERSIRE		2586	522	527	1180	80	0,12	44	0,03	2,99	0,70	-1,90	2,80	1,55	1,11	-0,37
543HO00209	HABITUS	PHARO	SILVER		2573	487	495	990	51	0,04	41	0,04	2,90	2,40	-1,60	2,00	2,28	2,12	0,48
543HO00214	BRIATORE	ARGO	ALTAHOTROD		2376	190	195	759	19	-0,04	28	0,02	2,90	0,60	-0,90	2,50	2,41	2,21	0,72
543HO00157	MARZEMINO	SOUND	KINGBOY		2539	451	458	781	59	0,10	31	0,02	2,86	1,60	0,80	2,40	1,22	1,24	-0,44
543HO00167	NEUTRON	CHARLEY	POWERBALL P	A2A2	2524	500	507	1706	24	-0,14	58	0,02	2,84	1,90	0,40	2,10	1,06	0,85	0,11
543HO00220	CELLINI	NEBULA	JAGGER	A2A2	2502	531	535	1172	45	0,00	38	0,01	2,85	2,30	-0,50	2,00	0,82	0,43	0,53
543HO00235	TELESFORO	SOUND SYSTEM	DERWOOD		2500	448	458	915	50	0,05	51	0,08	3,15	0,20	-1,60	2,30	1,45	1,65	0,18
543HO00067	VAN HALEN	MONTROSS	MCCUTCHEN	A2A2	2457	394	400	1051	48	0,03	39	0,02	2,91	1,10	-1,80	1,90	1,23	1,22	0,86
543HO00087	SHARPE	ALTA1STCLASS	EPIC		2422	411	409	1393	38	-0,05	34	-0,03	2,87	1,30	-2,20	1,90	1,08	2,06	0,56
543HO00199	GIORDANO	PERSEUS	RODANAS		2624	610	632	510	73	0,19	39	0,08	2,57	3,10	-0,30	2,10	0,93	0,94	-0,21
543HO00227	NIBALI	PADAWAN	EAGLE	A2A2	2404	407	416	939	22	-0,05	38	0,03	2,85	2,20	1,90	1,60	0,33	0,84	-1,01
543HO00246	SOGNO ROSSO	LUCKY	KINGBOY	A2A2	2321	319	338	-75	22	0,09	18	0,07	2,65	2,90	-0,30	1,80	0,85	0,90	0,25



# GO-FARM BERNINI

IT019991728770 - 543HO00216 - aAa 234



**GUARANTEE** **HOTROD** **MCCUTCHEN**  
 Boastful x Tango x Go-Farm-Bomba ET MB85 x Go-Farm Brashine EX91

**TPI** +2697 **NET MERIT \$** +735 **CHEESE MERIT \$** +751

► **PRODUCTION TRAITS** based on 288 daughters in 109 herds (96% REL)

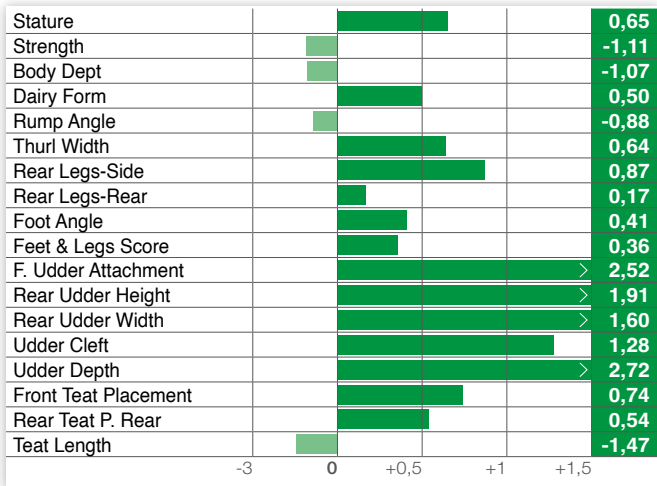
Milk	% Fat	Fat	% Protein	Protein
<b>+534 lbs</b>	<b>+0,14</b>	<b>+60</b>	<b>+0,04</b>	<b>+28</b>
K Cas <b>AA</b>		Beta Lact <b>AB</b>		Beta Cas <b>A2A2</b>

► **HEALTH TRAITS**

SCS	<b>+2,53</b>	SCE	<b>+2,00</b>
PL	<b>+5,40</b>	DCE	<b>+1,80</b>
DPR	<b>-0,10</b>	FI	<b>+0,30</b>

► **TYPE TRAITS**

PTAT **+1,06** UDC **+1,90** FLC **+0,18**



# ISOLABELLA BRIATORE

IT001991129517 - 543HO00214 - aAa 213



**ARGO** **HOTROD** **DOORMAN**  
 Silver x Supersire x Isolabella Royal Bomby ET EX90 x Brill Royal Doorman Blondie GP81

**TPI** +2376 **NET MERIT \$** +190 **CHEESE MERIT \$** +195

► **PRODUCTION TRAITS** based on 121 daughters in 59 herds (91% REL)

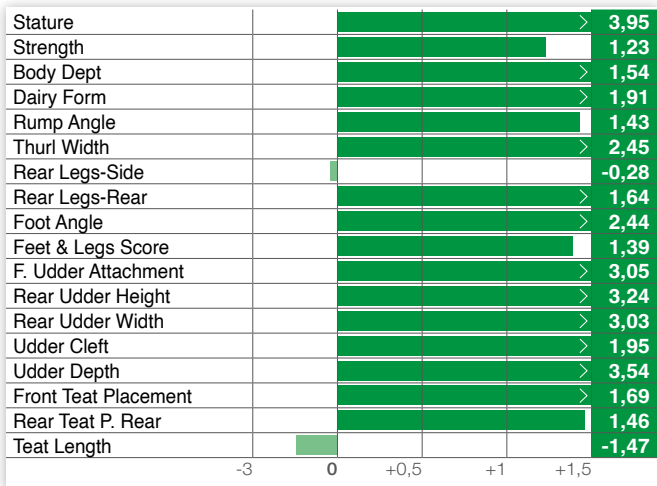
Milk	% Fat	Fat	% Protein	Protein
<b>+759 lbs</b>	<b>-0,04</b>	<b>+19</b>	<b>+0,02</b>	<b>+28</b>
K Cas <b>AB</b>		Beta Lact <b>AA</b>		Beta Cas <b>A1A2</b>

► **HEALTH TRAITS**

SCS	<b>+2,90</b>	SCE	<b>+2,50</b>
PL	<b>+0,60</b>	DCE	<b>+2,40</b>
DPR	<b>-0,90</b>	FI	<b>-0,50</b>

► **TYPE TRAITS**

PTAT **+2,41** UDC **+2,21** FLC **+0,72**



**New**IDEVRA  
ROYAL

# CELLINI

IT019991816264 - 543HO00220 - aAa 423

SEXED SEMEN *Made in Italy*  
**FOEMINA**  
Sexed **ULTRA 4M**

Idevra Royal Cellini

**NEBULA**

Charley x Balisto

**JAGGER**

Idevra Jagger B+78

**JUDO**Idevra Royal Celeste  
B+84**TPI**  
**+2502****NET MERIT \$**  
**+531****CHEESE MERIT \$**  
**+535****► PRODUCTION TRAITS** based on 346 daughters in 136 herds (93% REL)

Milk	% Fat	Fat	% Protein	Protein
<b>+1172 lbs</b>	<b>+0,00</b>	<b>+45</b>	<b>+0,01</b>	<b>+38</b>
K Cas <b>BB</b>		Beta Lact <b>AB</b>		Beta Cas <b>A2A2</b>

**► HEALTH TRAITS**

SCS	<b>+2,85</b>	SCE	<b>+2,00</b>
PL	<b>+2,30</b>	DCE	<b>+2,00</b>
DPR	<b>-0,50</b>	FI	<b>+0,60</b>

**Free Haplotypes**  
[i-][i-][i-]**► TYPE TRAITS**PTAT **+0,82** UDC **+0,43** FLC **+0,53**

Stature				<b>0,36</b>
Strength				<b>0,35</b>
Body Dept				<b>0,57</b>
Dairy Form				<b>1,05</b>
Rump Angle				<b>-0,13</b>
Thurl Width				<b>1,20</b>
Rear Legs-Side				<b>0,07</b>
Rear Legs-Rear				<b>0,69</b>
Foot Angle				<b>0,60</b>
Feet & Legs Score				<b>0,53</b>
F. Udder Attachment				<b>0,27</b>
Rear Udder Height				<b>0,64</b>
Rear Udder Width				<b>0,83</b>
Udder Cleft				<b>1,25</b>
Udder Depth				<b>-0,39</b>
Front Teat Placement				<b>1,59</b>
Rear Teat P. Rear				<b>1,38</b>
Teat Length				<b>0,71</b>

-3 0 +0,5 +1 +1,5

CIRIO AGR.  
EQUITY GAP

# EDUARDO

IT061990821887 - 543HO00194 - aAa 234



Cirio Agr. Equity Gap Eduardo

**PERSEUS**Penmanship  
x Doorman**BATTLECRY**Cirio Agricola Ermione  
GP84**CASHMONEY**Cirio Agricola Elettra  
MB88 EXMS**TPI**  
**+2611****NET MERIT \$**  
**+561****CHEESE MERIT \$**  
**+571****► PRODUCTION TRAITS** based on 1655 daughters in 359 herds (99% REL)

Milk	% Fat	Fat	% Protein	Protein
<b>+996 lbs</b>	<b>+0,00</b>	<b>+37</b>	<b>+0,01</b>	<b>+33</b>
K Cas <b>AA</b>		Beta Lact <b>AA</b>		Beta Cas <b>A2A2</b>

**► HEALTH TRAITS**

SCS	<b>+2,59</b>	SCE	<b>+1,90</b>
PL	<b>+4,50</b>	DCE	<b>+2,00</b>
DPR	<b>+2,80</b>	FI	<b>+2,80</b>

**► TYPE TRAITS**PTAT **+1,02** UDC **+1,24** FLC **-0,44**

Stature				<b>1,22</b>
Strength				<b>0,30</b>
Body Dept				<b>0,21</b>
Dairy Form				<b>0,46</b>
Rump Angle				<b>0,46</b>
Thurl Width				<b>-0,08</b>
Rear Legs-Side				<b>-0,88</b>
Rear Legs-Rear				<b>-0,53</b>
Foot Angle				<b>1,23</b>
Feet & Legs Score				<b>-0,11</b>
F. Udder Attachment				<b>1,79</b>
Rear Udder Height				<b>0,94</b>
Rear Udder Width				<b>1,13</b>
Udder Cleft				<b>1,24</b>
Udder Depth				<b>2,17</b>
Front Teat Placement				<b>0,89</b>
Rear Teat P. Rear				<b>0,70</b>
Teat Length				<b>-0,08</b>

-3 0 +0,5 +1 +1,5



New

SABBIONA

# EMERITO

IT098990684345 - 543HO00221 - aAa 243615



**MONTOYA**

Moreno x Supersire

**JEDI**

Cnn Jedi Shaddow MB89

**ROBUST**

Miss Amerika MB85

**TPI**

**+2641**

**NET MERIT \$**

**+659**

**CHEESE MERIT \$**

**+666**

► **PRODUCTION TRAITS** based on 92 daughters in 32 herds (88% REL)

Milk	% Fat	Fat	% Protein	Protein
<b>+2189 lbs</b>	<b>-0,10</b>	<b>+55</b>	<b>+0,02</b>	<b>+73</b>
K Cas <b>AE</b>		Beta Lact <b>AB</b>		Beta Cas <b>A1A2</b>

► **HEALTH TRAITS**

SCS	<b>+2,85</b>	SCE	<b>+2,10</b>
PL	<b>+3,40</b>	DCE	<b>+2,70</b>
DPR	<b>-2,80</b>	FI	<b>-2,00</b>

► **TYPE TRAITS**

PTAT **+1,37** UDC **+0,86** FLC **-0,67**

Stature	2,35
Strength	1,40
Body Dept	1,41
Dairy Form	1,39
Rump Angle	2,65
Thurl Width	1,05
Rear Legs-Side	-0,41
Rear Legs-Rear	-0,44
Foot Angle	0,48
Feet & Legs Score	-0,07
F. Udder Attachment	1,13
Rear Udder Height	1,86
Rear Udder Width	1,71
Udder Cleft	0,75
Udder Depth	0,98
Front Teat Placement	0,59
Rear Teat P. Rear	0,52
Teat Length	0,46



PESS FARM PERSEUS

# FALETTI

IT004991763908 - 543HO00197 - aAa 243

SEXED SEMEN *Made in Italy*  
**FOEMINA**  
Sexed **ULTRA 4M**



**PERSEUS**

Penmanship x Doorman

**MARDI GRAS**

Pess Farm Mardi Gras Umina EX90

**EUDON**

Pess Farm Eudon Spagnola B+84

**TPI**  
**+2448**

**NET MERIT \$**  
**+424**

**CHEESE MERIT \$**  
**+434**

► **PRODUCTION TRAITS** based on 1854 daughters in 519 herds (90% REL)

Milk	% Fat	Fat	% Protein	Protein
<b>+485 lbs</b>	<b>+0,05</b>	<b>+33</b>	<b>+0,06</b>	<b>+32</b>
K Cas <b>AB</b>		Beta Lact <b>AA</b>		Beta Cas <b>A2A2</b>

► **HEALTH TRAITS**

SCS	<b>+2,98</b>	SCE	<b>+1,50</b>
PL	<b>+2,00</b>	DCE	<b>+1,50</b>
DPR	<b>+2,20</b>	FI	<b>+2,20</b>

► **TYPE TRAITS**

PTAT **+0,45** UDC **+0,94** FLC **-0,19**

Stature	0,08
Strength	-0,09
Body Dept	-0,52
Dairy Form	-0,59
Rump Angle	0,72
Thurl Width	0,01
Rear Legs-Side	-2,34
Rear Legs-Rear	-0,19
Foot Angle	1,80
Feet & Legs Score	-0,16
F. Udder Attachment	1,49
Rear Udder Height	1,49
Rear Udder Width	0,39
Udder Cleft	0,71
Udder Depth	1,60
Front Teat Placement	0,59
Rear Teat P. Rear	0,45
Teat Length	-0,87

Free Haplotypes





IDEVRA  
ROYAL

## GIORDANO

IT019991621646 - 543HO00199 - aAa 135

SEXED SEMEN *Made in Italy*  
**FOEMINA**  
Sexed **ULTRA 4M**

## PERSEUS

Penmanship  
x Doorman

## RODANAS

Idevra Royal Grinta  
MB88

## AGENCY

Gal-Farm Goga

TPI  
**+2624**NET MERIT \$  
**+610**CHEESE MERIT \$  
**+632**

Idevra Royal Giordano

## ► PRODUCTION TRAITS based on 2147 daughters in 550 herds (99% REL)

Milk	% Fat	Fat	% Protein	Protein
<b>+510 lbs</b>	<b>+0,19</b>	<b>+73</b>	<b>+0,08</b>	<b>+39</b>
K Cas <b>AB</b>		Beta Lact <b>AA</b>		Beta Cas <b>A1A2</b>

## ► HEALTH TRAITS

SCS	<b>+2,57</b>	SCE	<b>+2,10</b>
PL	<b>+3,10</b>	DCE	<b>+2,20</b>
DPR	<b>-0,30</b>	FI	<b>-0,30</b>



Pessa Farm Giordano Comesa

## ► TYPE TRAITS

PTAT **+0,93** UDC **+0,94** FLC **-0,21**

Stature	>	1,72
Strength		0,83
Body Dept		0,99
Dairy Form	>	1,07
Rump Angle	<	-0,80
Thurl Width	>	1,49
Rear Legs-Side		0,23
Rear Legs-Rear		0,03
Foot Angle	>	1,21
Feet & Legs Score		0,14
F. Udder Attachment	>	0,95
Rear Udder Height	>	0,96
Rear Udder Width	>	1,16
Udder Cleft	>	2,05
Udder Depth	>	1,56
Front Teat Placement	>	1,91
Rear Teat P. Rear	>	2,19
Teat Length	<	-0,50

-3 0 +0,5 +1 +1,5

A-L-H

## HABITUS

NI000562148420 - 543HO00209

SEXED SEMEN *Made in Italy*  
**FOEMINA**  
Sexed **ULTRA 4M**

## PHARO

Jedi x Balisto

## SILVER

A-L-H Havanna

## SUPERSIRE

Cookiecutter Ssire  
Have MB86TPI  
**+2573**NET MERIT \$  
**+487**CHEESE MERIT \$  
**+495**

A-L-H Habitus

## ► PRODUCTION TRAITS based on 997 daughters in 248 herds (98% REL)

Milk	% Fat	Fat	% Protein	Protein
<b>+990 lbs</b>	<b>+0,04</b>	<b>+51</b>	<b>+0,04</b>	<b>+41</b>
K Cas <b>BE</b>		Beta Lact <b>AB</b>		Beta Cas <b>A1A2</b>

## ► HEALTH TRAITS

SCS	<b>+2,90</b>	SCE	<b>+2,00</b>
PL	<b>+2,40</b>	DCE	<b>+2,00</b>
DPR	<b>-1,60</b>	FI	<b>-1,40</b>

## ► TYPE TRAITS

PTAT **+2,28** UDC **+2,12** FLC **+0,48**

Stature	>	2,67
Strength		0,58
Body Dept		1,08
Dairy Form	>	1,88
Rump Angle		0,37
Thurl Width	>	0,87
Rear Legs-Side		0,11
Rear Legs-Rear		0,90
Foot Angle	>	1,76
Feet & Legs Score		0,99
F. Udder Attachment	>	2,93
Rear Udder Height	>	2,98
Rear Udder Width	>	2,55
Udder Cleft	>	1,73
Udder Depth	>	2,70
Front Teat Placement	>	1,86
Rear Teat P. Rear	>	2,17
Teat Length	<	-1,27

-3 0 +0,5 +1 +1,5

PRISMAGEN **LIVER**

DE000360385506 - 543HO00163 - aAa 234

SEXED SEMEN *Made in Italy*  
**FOEMINA**  
Sexed **ULTRA**



Prismagen Liver

**SUPERHERO** x **MISSOURI** x **NUMERO UNO**  
Supershot x Numero Uno x Pg Ladylike MB86 x Hlm Lane MB85

**TPI** +2643    **NET MERIT \$** +635    **CHEESE MERIT \$** +644

► **PRODUCTION TRAITS** based on 1375 daughters in 348 herds (99% REL)

Milk	% Fat	Fat	% Protein	Protein
<b>+1421 lbs</b>	<b>-0,05</b>	<b>+41</b>	<b>+0,01</b>	<b>+46</b>
K Cas <b>BB</b>		Beta Lact <b>AB</b>		Beta Cas <b>A2A2</b>

► **HEALTH TRAITS**

SCS	<b>+2,63</b>	SCE	<b>+2,20</b>
PL	<b>+3,80</b>	DCE	<b>+2,20</b>
DPR	<b>+1,60</b>	FI	<b>+1,60</b>

Free **Haplotypes**  
[i-][i-][i-]



Gasperi Liver

► **TYPE TRAITS**

PTAT **+0,83** UDC **+1,22** FLC **-0,17**

Stature					0,02
Strength					-0,48
Body Dept					-0,50
Dairy Form					0,26
Rump Angle					-1,98
Thurl Width					1,01
Rear Legs-Side					1,44
Rear Legs-Rear					-0,94
Foot Angle					-0,55
Feet & Legs Score					0,16
F. Udder Attachment					2,28
Rear Udder Height					1,37
Rear Udder Width					1,18
Udder Cleft					-0,05
Udder Depth					1,38
Front Teat Placement					-0,85
Rear Teat P. Rear					-0,66
Teat Length					0,97

GARIONI SOUND **MARZEMINO**

IT019991673056 - 543HO00157 - aAa 231

SEXED SEMEN *Made in Italy*  
**FOEMINA**  
Sexed **ULTRA**



Garioni Sound Marzemino

**SOUND SYSTEM** x **KINGBOY** x **FREDDIE**  
Silver x Supersire x Garioni Royal KB Maelyn ET MB87 x Morningview Freddie Mimi EX90

**TPI** +2539    **NET MERIT \$** +451    **CHEESE MERIT \$** +458

► **PRODUCTION TRAITS** based on 717 daughters in 227 herds (98% REL)

Milk	% Fat	Fat	% Protein	Protein
<b>+781 lbs</b>	<b>+0,10</b>	<b>+59</b>	<b>+0,02</b>	<b>+31</b>
K Cas <b>AB</b>		Beta Lact <b>AA</b>		Beta Cas <b>A1A2</b>

► **HEALTH TRAITS**

SCS	<b>+2,86</b>	SCE	<b>+2,40</b>
PL	<b>+1,60</b>	DCE	<b>+2,10</b>
DPR	<b>+0,80</b>	FI	<b>+1,20</b>

Casa Bianca Marzemino Nicanora B+82



► **TYPE TRAITS**

PTAT **+1,22** UDC **+1,24** FLC **-0,44**

Stature					1,60
Strength					0,89
Body Dept					0,91
Dairy Form					0,95
Rump Angle					-0,02
Thurl Width					1,52
Rear Legs-Side					1,29
Rear Legs-Rear					-0,21
Foot Angle					0,71
Feet & Legs Score					-0,04
F. Udder Attachment					1,38
Rear Udder Height					2,10
Rear Udder Width					1,72
Udder Cleft					0,89
Udder Depth					1,20
Front Teat Placement					1,01
Rear Teat P. Rear					0,78
Teat Length					0,65

R DG

# NEUTRON

NL000715951660 - 543HO00167 - aAa 231465



R DG Neutron

**CHARLEY** x **POWERBALL** x **NUMERO UNO**  
Supershot x Mogul R DG Noa Tir-An N.U. Nyala MB86

<b>TPI</b> <b>+2524</b>	<b>NET MERIT \$</b> <b>+500</b>	<b>CHEESE MERIT \$</b> <b>+507</b>
----------------------------	------------------------------------	---------------------------------------

► **PRODUCTION TRAITS** based on 5600 daughters in 1166 herds (99% REL)

Milk <b>+1706 lbs</b>	% Fat <b>-0,14</b>	Fat <b>+24</b>	% Protein <b>+0,02</b>	Protein <b>+58</b>
K Cas <b>BB</b>		Beta Lact <b>AA</b>		Beta Cas <b>A2A2</b>

► **HEALTH TRAITS**

SCS	<b>+2,84</b>	SCE	<b>+2,10</b>
PL	<b>+1,90</b>	DCE	<b>+1,80</b>
DPR	<b>+0,40</b>	FI	<b>+0,70</b>

Free Haplotypes  
I-I-I-I-I



Krisma Neutron Laurie V687

► **TYPE TRAITS**

PTAT **+1,06** UDC **+0,85** FLC **+0,11**

Stature	1,75
Strength	-0,31
Body Dept	0,07
Dairy Form	1,36
Rump Angle	0,51
Thurl Width	1,33
Rear Legs-Side	1,13
Rear Legs-Rear	-0,05
Foot Angle	0,25
Feet & Legs Score	0,67
F. Udder Attachment	1,16
Rear Udder Height	1,17
Rear Udder Width	1,22
Udder Cleft	1,33
Udder Depth	1,06
Front Teat Placement	1,20
Rear Teat P. Rear	1,56
Teat Length	0,32

GO-FARM INSEME

# NIBALI

IT019991867324 - 543HO00227 - aAa 243



Go-Farm Inseme Nibali

**PADAWAN** x **EAGLE** x **POWERBALL**  
Jedi x Enforcer Go-Farm Natasha B+84 Dg R Nourya MB85

<b>TPI</b> <b>+2404</b>	<b>NET MERIT \$</b> <b>+407</b>	<b>CHEESE MERIT \$</b> <b>+416</b>
----------------------------	------------------------------------	---------------------------------------

► **PRODUCTION TRAITS** based on 931 daughters in 312 herds (96% REL)

Milk <b>+939 lbs</b>	% Fat <b>-0,05</b>	Fat <b>+22</b>	% Protein <b>+0,03</b>	Protein <b>+38</b>
K Cas <b>BB</b>		Beta Lact <b>AA</b>		Beta Cas <b>A2A2</b>

► **HEALTH TRAITS**

SCS	<b>+2,85</b>	SCE	<b>+1,60</b>
PL	<b>+2,20</b>	DCE	<b>+2,00</b>
DPR	<b>+1,90</b>	FI	<b>+1,90</b>

Free Haplotypes  
I-I-I-I-I



Eagle Go Farm.Casalmorano CR

► **TYPE TRAITS**

PTAT **+0,33** UDC **+0,84** FLC **-1,01**

Stature	1,08
Strength	-0,18
Body Dept	-0,24
Dairy Form	0,27
Rump Angle	1,02
Thurl Width	-0,49
Rear Legs-Side	-2,30
Rear Legs-Rear	-0,69
Foot Angle	0,50
Feet & Legs Score	-0,67
F. Udder Attachment	0,90
Rear Udder Height	0,90
Rear Udder Width	0,81
Udder Cleft	1,44
Udder Depth	1,70
Front Teat Placement	0,89
Rear Teat P. Rear	2,58
Teat Length	-1,56



# RAFFAELLO

DOTTI ENTERPRISE

IT036990627056 - 543HO00212 - aAa 231

SEXED SEMEN *Made in Italy*  
**FOEMINA**  
Sexed **ULTRA**



Dotti Enterprise Raffaello

**ENTERPRISE** × **SILVER** × **DOORMAN**  
Penmanship x Balisto × Dotti Silver Alessia MB88 × Dotti Doorina MB86

**TPI** +2405      **NET MERIT \$** +312      **CHEESE MERIT \$** +330

► **PRODUCTION TRAITS** based on 209 daughters in 96 herds (93% REL)

Milk	% Fat	Fat	% Protein	Protein
<b>+247 lbs</b>	<b>+0,10</b>	<b>+38</b>	<b>+0,09</b>	<b>+32</b>
K Cas <b>BB</b>		Beta Lact <b>AB</b>		Beta Cas <b>A2A2</b>

► **HEALTH TRAITS**

SCS	<b>+2,80</b>	SCE	<b>+2,30</b>
PL	<b>+1,10</b>	DCE	<b>+2,10</b>
DPR	<b>-1,40</b>	FI	<b>-1,20</b>



La Corte di Dotti Silver



► **TYPE TRAITS**

PTAT **+1,54** UDC **+1,17** FLC **+0,79**

Stature	>	1,68
Strength	>	0,75
Body Dept	>	1,24
Dairy Form	>	1,29
Rump Angle	>	1,78
Thurl Width	>	0,56
Rear Legs-Side	>	-0,15
Rear Legs-Rear	>	0,97
Foot Angle	>	1,70
Feet & Legs Score	>	1,08
F. Udder Attachment	>	1,54
Rear Udder Height	>	1,85
Rear Udder Width	>	1,49
Udder Cleft	>	1,08
Udder Depth	>	1,60
Front Teat Placement	>	0,68
Rear Teat P. Rear	>	0,69
Teat Length	>	1,35

# RAVASIO

CORVINI INSEME

IT098990608731 - TL TM TV TY - 234

SEXED SEMEN *Made in Italy*  
**FOEMINA**  
Sexed **ULTRA 4M**



Corvini Inseme Ravasio

**SHARPE** × **SILVER** × **SUPERSIRE**  
1stclass x Epic × Corvini Sissi ET MB87 × Corvini Siria MB85

**TPI** +2516      **NET MERIT \$** +332      **CHEESE MERIT \$** +339

► **PRODUCTION TRAITS** based on 552 daughters in 189 herds (97% REL)

Milk	% Fat	Fat	% Protein	Protein
<b>+882 lbs</b>	<b>+0,05</b>	<b>+47</b>	<b>+0,01</b>	<b>+31</b>
K Cas <b>BB</b>		Beta Lact <b>AA</b>		Beta Cas <b>A1A2</b>

► **HEALTH TRAITS**

SCS	<b>+2,76</b>	SCE	<b>+2,30</b>
PL	<b>+1,00</b>	DCE	<b>+2,70</b>
DPR	<b>-1,80</b>	FI	<b>-1,70</b>



Ravasio Daughter



► **TYPE TRAITS**

PTAT **+1,89** UDC **+2,76** FLC **+0,80**

Stature	>	2,40
Strength	>	1,15
Body Dept	>	0,29
Dairy Form	>	0,69
Rump Angle	>	1,20
Thurl Width	>	0,80
Rear Legs-Side	>	0,32
Rear Legs-Rear	>	1,35
Foot Angle	>	0,78
Feet & Legs Score	>	1,25
F. Udder Attachment	>	3,76
Rear Udder Height	>	3,39
Rear Udder Width	>	2,98
Udder Cleft	>	2,28
Udder Depth	>	3,34
Front Teat Placement	>	1,47
Rear Teat P. Rear	>	1,49
Teat Length	>	-0,78

FANTASY ALLMEI

# SHARPE

IT001990871408 - 543HO00087 - aAa 234156



Fantasy Allmei Sharpe

**ALTA1STCLASS**

**EPIC**

**HAYDEN**

Numero Uno x Dorcy

Sepia ET MB85

Sabrin 192 MB85

<b>TPI</b> <b>+2422</b>	<b>NET MERIT \$</b> <b>+411</b>	<b>CHEESE MERIT \$</b> <b>+409</b>
----------------------------	------------------------------------	---------------------------------------

► **PRODUCTION TRAITS** based on 3054 daughters in 759 herds (99% REL)

Milk <b>+1393 lbs</b>	% Fat <b>-0,05</b>	Fat <b>+38</b>	% Protein <b>-0,03</b>	Protein <b>+34</b>
K Cas <b>BE</b>		Beta Lact <b>AA</b>		Beta Cas <b>A1A2</b>

► **HEALTH TRAITS**

SCS <b>+2,87</b>	SCE <b>+1,90</b>	PL <b>+1,30</b>	DCE <b>+3,20</b>	DPR <b>-2,20</b>	FI <b>-2,00</b>
---------------------	---------------------	--------------------	---------------------	---------------------	--------------------



Sharpe Drama EX91



► **TYPE TRAITS**

PTAT	<b>+1,08</b>	UDC	<b>+2,06</b>	FLC	<b>+0,56</b>
------	--------------	-----	--------------	-----	--------------

Stature					0,76
Strength					-0,84
Body Dept					-0,60
Dairy Form					0,80
Rump Angle					2,01
Thurl Width					-0,52
Rear Legs-Side					0,07
Rear Legs-Rear					0,64
Foot Angle					0,72
Feet & Legs Score					0,69
F. Udder Attachment					2,11
Rear Udder Height					2,89
Rear Udder Width					1,52
Udder Cleft					1,26
Udder Depth					2,39
Front Teat Placement					0,44
Rear Teat P. Rear					0,85
Teat Length					-0,12

-3 0 +0,5 +1 +1,5

GO-FARM

# SORRENTO

IT019991728974 - 543HO00192 - aAa 324156



Go-Farm Sorrento

**HOTLINE**

**BATTLECRY**

**DOORMAN**

Hotrod x Mogul

Go-Farm Smack GP82

Go-Farm Sanwood VG86

<b>TPI</b> <b>+2577</b>	<b>NET MERIT \$</b> <b>+475</b>	<b>CHEESE MERIT \$</b> <b>+494</b>
----------------------------	------------------------------------	---------------------------------------

► **PRODUCTION TRAITS** based on 275 daughters in 98 herds (95% REL)

Milk <b>+485 lbs</b>	% Fat <b>+0,21</b>	Fat <b>+79</b>	% Protein <b>+0,08</b>	Protein <b>+38</b>
K Cas <b>AB</b>		Beta Lact <b>AA</b>		Beta Cas <b>A2A2</b>

► **HEALTH TRAITS**

SCS <b>+2,74</b>	SCE <b>+2,00</b>	PL <b>-0,60</b>	DCE <b>+2,20</b>	DPR <b>-2,80</b>	FI <b>-2,10</b>
---------------------	---------------------	--------------------	---------------------	---------------------	--------------------

► **TYPE TRAITS**

PTAT	<b>+1,44</b>	UDC	<b>+1,48</b>	FLC	<b>+1,13</b>
------	--------------	-----	--------------	-----	--------------

Stature					1,26
Strength					0,21
Body Dept					0,72
Dairy Form					1,46
Rump Angle					-0,85
Thurl Width					0,83
Rear Legs-Side					-0,49
Rear Legs-Rear					1,84
Foot Angle					1,33
Feet & Legs Score					1,17
F. Udder Attachment					2,16
Rear Udder Height					1,48
Rear Udder Width					1,85
Udder Cleft					1,55
Udder Depth					1,51
Front Teat Placement					0,54
Rear Teat P. Rear					0,95
Teat Length					0,10

-3 0 +0,5 +1 +1,5



# MIRABELL SOUND SYSTEM

IT017991512628 - 543HO00086 - aAa 234156



**SILVER** Mogul x Snowman X **SUPERSIRE** Mirabell Ssire Shana ET MB87 X **SHOTTLE** Mirabell Nizza EX90

**TPI** +2586      **NET MERIT \$** +522      **CHEESE MERIT \$** +527

► **PRODUCTION TRAITS** based on 9856 daughters in 1717 herds (99% REL)

Milk	% Fat	Fat	% Protein	Protein
<b>+1180 lbs</b>	<b>+0,12</b>	<b>+80</b>	<b>+0,03</b>	<b>+44</b>
K Cas <b>BE</b>		Beta Lact <b>AA</b>		Beta Cas <b>A1A1</b>

► **HEALTH TRAITS**

SCS	<b>+2,99</b>	SCE	<b>+2,80</b>
PL	<b>+0,70</b>	DCE	<b>+1,90</b>
DPR	<b>-1,90</b>	FI	<b>-1,20</b>



► **TYPE TRAITS**

PTAT **+1,55**    UDC **+1,11**    FLC **-0,37**

Stature	2,44
Strength	1,18
Body Dept	1,70
Dairy Form	2,34
Rump Angle	0,32
Thurl Width	1,21
Rear Legs-Side	1,95
Rear Legs-Rear	0,09
Foot Angle	0,43
Feet & Legs Score	0,27
F. Udder Attachment	1,19
Rear Udder Height	2,47
Rear Udder Width	2,11
Udder Cleft	0,83
Udder Depth	0,78
Front Teat Placement	1,06
Rear Teat P. Rear	1,13
Teat Length	0,41



# **New** CORVINI TELESFORO

IT098990685193 - 543HO00235 - aAa 243



**SOUND SYSTEM** Silver x Supersire X **DERWOOD** Doorman x Man-Oman X **DEMPEY** Goldwyn x Derry

**TPI** +2500      **NET MERIT \$** +448      **CHEESE MERIT \$** +458

► **PRODUCTION TRAITS** based on 102 daughters in 40 herds (89% REL)

Milk	% Fat	Fat	% Protein	Protein
<b>+915 lbs</b>	<b>+0,05</b>	<b>+50</b>	<b>+0,08</b>	<b>+51</b>
K Cas <b>BE</b>		Beta Lact <b>AA</b>		Beta Cas <b>A1A2</b>

► **HEALTH TRAITS**

SCS	<b>+3,15</b>	SCE	<b>+2,30</b>
PL	<b>+0,20</b>	DCE	<b>+2,70</b>
DPR	<b>-1,60</b>	FI	<b>-1,00</b>

► **TYPE TRAITS**

PTAT **+1,45**    UDC **+1,65**    FLC **+0,18**

Stature	1,22
Strength	0,56
Body Dept	0,93
Dairy Form	1,88
Rump Angle	-0,63
Thurl Width	0,72
Rear Legs-Side	1,11
Rear Legs-Rear	0,31
Foot Angle	0,57
Feet & Legs Score	0,49
F. Udder Attachment	1,32
Rear Udder Height	2,89
Rear Udder Width	2,51
Udder Cleft	1,47
Udder Depth	0,64
Front Teat Placement	0,97
Rear Teat P. Rear	1,34
Teat Length	-0,30



GARIONI ROYAL

# VANHALEN

IT019991363560 - 543HO00067 - aAa 324561



**MONTROSS**

Mogul x Bolton

**MCCUTCHEN**

Sonray-Acres Mcthn  
B+84

**OBSERVER**

Sonray-Acres Soc  
Observr



Garioni Royal Vanhalen

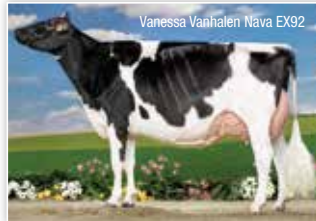
<b>TPI</b> <b>+2457</b>	<b>NET MERIT \$</b> <b>+394</b>	<b>CHEESE MERIT \$</b> <b>+400</b>
----------------------------	------------------------------------	---------------------------------------

► **PRODUCTION TRAITS** based on 14116 daughters in 2412 herds (99% REL)

Milk <b>+1051 lbs</b>	% Fat <b>+0,03</b>	Fat <b>+48</b>	% Protein <b>+0,02</b>	Protein <b>+39</b>
K Cas <b>AB</b>		Beta Lact <b>AA</b>		Beta Cas <b>A2A2</b>

► **HEALTH TRAITS**

SCS <b>+2,91</b>	SCE <b>+1,90</b>	PL <b>+1,10</b>	DCE <b>+2,30</b>	DPR <b>-1,80</b>	FI <b>-1,50</b>
---------------------	---------------------	--------------------	---------------------	---------------------	--------------------



Vanessa Vanhalen Nava EX92

► **TYPE TRAITS**

PTAT	<b>+1,23</b>	UDC	<b>+1,22</b>	FLC	<b>+0,86</b>
------	--------------	-----	--------------	-----	--------------

Stature					0,65
Strength					0,62
Body Dept					0,60
Dairy Form					1,01
Rump Angle					-0,69
Thurl Width					0,50
Rear Legs-Side					-1,39
Rear Legs-Rear					1,21
Foot Angle					1,15
Feet & Legs Score					0,89
F. Udder Attachment					1,85
Rear Udder Height					1,98
Rear Udder Width					1,87
Udder Cleft					-0,22
Udder Depth					1,07
Front Teat Placement					-0,24
Rear Teat P. Rear					-1,45
Teat Length					-0,73



# THE PERFECT PARTNERSHIP



## SexedULTRA 4M

continues to pass 90% gender accuracy allowing the farmer to feel confident in producing female progeny from the very best of the herd

## INSEME BEEF IMPACT

Maximise the value of every beef pregnancy by selecting our proven bulls that suit your farm system

Inseme's Beef Impact encompasses real on-farm data which is aimed at Dairy farmers wanting to select beef sires that will suit their system for Ease of Management and added Market Value. This maximises productivity and profitability of the dairy herd by allowing customers to identify proven quality bulls who are specialists for desired traits.



### LUCE WATER PARTY BOY

UK116863300075

			SIRE ATTRIBUT DU FOND DE BOIS	DAM BORTHERS KYRIE	MGS ANNANWATER VINCE
GESTATION LENGTH (GG)	LONGER	285	281	SHORTER	
CALVING DIFFICULTY (%)	HARDER	5	3.2	EASIER	
CALF VIGOUR (%)	-VIGOROUS	1	1.7	+VIGOROUS	
CALF QUALITY (%)	POORER	80	91.5	EXCELLENT	
BIRTH WEIGHT (KG)	LIGHTER	0	1.9	HEAVIER	



### TWEMLOWS OFFICER

UK 305928/401634

			SIRE AMPERTAINE COMMANDER	DAM TWEMLOWS HUM	MGS -
GESTATION LENGTH (GG)	LONGER	285	284	SHORTER	
CALVING DIFFICULTY (%)	HARDER	5	2.8	EASIER	
CALF VIGOUR (%)	-VIGOROUS	1	1.2	+VIGOROUS	
CALF QUALITY (%)	POORER	80	99	EXCELLENT	
BIRTH WEIGHT (KG)	LIGHTER	0	-0.2	HEAVIER	



*italian style*

**Inseme**  
by **STgenetics**

INSEME S.r.l. a socio unico

Sede Legale e Amministrativa: Strada Cadiane 179 – 41126 Modena (MO) - ITALY

Tel +39 059 514611 • Mail: [info@inseme.it](mailto:info@inseme.it) • [www.inseme.it](http://www.inseme.it) •  [InsemeGenetics](https://www.facebook.com/InsemeGenetics) •  [Insemegenetics](https://www.instagram.com/Insemegenetics)