

Inseme

by STG[®]



August 2023

HOW TO READ PROOFS

TPI Total Performance Index	46% Production traits	28% Health traits	26% Type traits
NM\$ Net Merit \$	43% Production traits	41% Health traits	16% Type traits
CM\$ Cheese Merit \$	50% Production traits	37% Health traits	13% Type traits
GM\$ Grazing Merit \$	38% Production traits	48% Health traits	14% Type traits
FM\$ Fluid Merit \$	45% Production traits	39% Health traits	16% Type traits

- PTA:** Predicted Transmitting Ability PTA is the predicted difference between a parent animal's offspring and the average, due to the genes transmitted from the parent. Each PTA is given in the units used to measure the trait. The PTA for milk is reported in pounds, the PTA for productive life is reported in months.
- PTAM:** Predicted Transmitting Ability Milk production in pounds, reflecting the expected milk production of future mature daughters.
- PTAF:** Predicted Transmitting Ability Fat pounds, reflecting the expected butterfat production of mature daughters
- PTAF%:** Predicted Transmitting Ability Fat %, indicates the bull's genetic variance for transmitting fat and being positive or negative.
- PTAP:** Predicted Transmitting Ability Protein production in pounds reflecting the expected protein production of mature daughters.
- PTAP%:** Predicted Transmitting Ability Protein %, indicates the bull's genetic variance for transmitting protein and being positive or negative.
- PL:** Productive Life, gives a measure of the number of productive months, lifetime you can expect from a bull's daughters
- LIV:** Cow Liveability, measure of a cow's ability to remain alive while in the milking herd.

- SCS:** Somatic Cell Score, is used to improve mastitis resistance. Bulls with low a PTA for SCS (less than 3.00) are expected to have daughters with lower mastitis than bulls with high PTA for SCS (greater than 3.50)
- DPR:** Daughter Pregnancy Rate, is defined as the percentage of cows that become pregnant during each 21 day period. A DPR of '1.0' implies that daughters from this bull are 1% more likely to become pregnant during that estrus cycle than a bull with an evaluation of zero. Each increase of 1% in PTA DPR equals a decrease of 4 days in PTA days open
- HCR:** Heifer Conception Rate, a virgin heifers ability to conceive. Defined as a percentage of inseminated heifers that become pregnant each service. A HCR of 1.0 implies that daughters of this bull are 1% more likely to become pregnant as a heifer than daughters of a bull with an evaluation of 0.0
- CCR:** Cow Conception Rate, a lactating cows ability to conceive. Defined as a percentage of inseminated cows that become pregnant each service. A HCR of 1.0 implies that daughters of this bull are 1% more likely to become pregnant as a cow than daughters of a bull with an evaluation of 0.0.
- BCS:** Body Condition Score, reflects the animal's energy balance status in which research has clearly shown an association with improved female fertility, longevity and disease resistance.
- SCE:** Sire Calving Ease, the percentage of calving difficulties in first lactation animals. The average percentage difficult births is approximately 2.2%. in general, bulls with a SCE of 2.2% or less are considered "calving ease" bulls that are fine to use on heifers and smaller cows.
- DCE:** Daughter Calving Ease, like SCE, DCE is a measurement of the tendency of calves from a particular animal to be born easy (average 2.3%). Daughters of bulls with high DCE numbers would be expected to have a more difficult time giving birth than daughters of bulls with lower DCE numbers. DCE is evaluated on the same scale as SCE.
- SSB:** Sire Stillbirth, the percentage of a bull's offspring that are born dead to first lactation animals.
- DSB:** Daughter Stillbirth, is expressed as a percent stillbirth, where stillborn calves are those scored as dead at birth or born alive but died within 48 hours of birth. The average is 5.3%
- FE:** Feed Efficiency, is the net profit a farmer receives from an increase in production $FE = (\$0.0008 \times PTAM) + (\$1.55 \times PTAF) + (\$1.73 \times PTAP) + (\$0.11 \times \text{Feed Saved})$
- FI:** Fertility Index, combines several reproductive components (DPR, CCR, HCR and Early First Calving) in to one overall index. $FI = (0.7 \times DPR) + (0.1 \times HCR) + (0.1 \times CCR) + (0.1 \times EFC)$
- PTAT:** Predicted Transmitting Ability for Type, is an estimate of the genetic superiority for conformation that bull will transmit to its offspring. This is directly correlated with the final score of the bull's daughters, not the linear traits.
- UDC:** Udder Composite Index, is an index based on ability for udder improvement. Udder composite includes six linear traits and the weighting for each trait's contribution to higher udder scores.
- FLC:** Foot and Leg Composite Index, is a measure of a bull's ability for foot and leg improvement.

GPFT TOP LIST GPFT

Name	Father	Mother	A2A2	KBB	GPFT	IES €	ICS-PR €	Kg Lt	% Gr	Kg Gr	% Pr	Kg Pr	SCS	PL	DPR	SCE	Type	Icm	A & P
PRINSTON	ZINGLER	SIGILLO		BB	5008	1323	1629	873	0,33	64	0,29	60	110	112	117	104	0,97	1,91	1,26
KING RED P	GIO P-RF	GYWER	A2A2		4909	1308	1292	1321	0,11	60	0,21	70	109	108	116	107	1,39	2,15	3,31
GTA	MACHONE	SOUNDCLOUD			4770	1049	1127	1428	0,19	69	0,24	76	116	110	112	105	2,07	2,15	2,47
AVON	KONRAD	WORLD CLASS	A2A2		4761	1177	1181	1105	0,35	85	0,19	62	109	112	115	104	0,80	1,92	0,10
BELCANTO	CAPTAIN	DISCJOKEY			4738	1120	998	1178	0,85	135	0,31	75	111	110	113	105	1,17	1,39	2,06
BRABUS	WHEELHOUSE	GUARANTEE	A2A2		4720	1195	1231	1039	0,44	87	0,24	63	111	109	118	106	1,34	2,21	0,47
ARES	CRISALIS RF	PADAWAN			4713	1130	1249	1474	-0,05	52	0,27	81	111	108	112	105	0,64	1,46	-0,41
FABIUS	ZAZZLE	LAWSON		BB	4664	1062	1082	998	0,76	114	0,36	75	108	108	111	105	0,51	1,24	-1,62
JARMO	CAPTAIN	REDROCK	A2A2		4662	1122	1184	1139	0,43	85	0,22	63	109	108	108	104	0,32	0,97	1,66
MANTRA	TRY ME	YODA		BB	4645	973	925	1184	0,46	93	0,34	80	106	106	111	100	1,86	2,97	0,70
GRIFONE	MACHONE	SOUNDCLOUD			4622	1005	1130	656	0,14	38	0,29	55	117	110	114	104	2,28	2,74	2,71
SALUZZO	PLINKO	DATLINE	A2A2		4586	1041	1000	1078	0,45	92	0,35	79	111	110	107	108	0,35	0,49	1,32
BROLY	SENTIMENT	DEREK	A2A2	BB	4586	1032	1010	1699	0,31	92	0,20	80	101	103	110	104	1,58	0,70	1,50
BARUCH	CAPTAIN	IMAX	A2A2		4578	1045	941	1376	0,74	126	0,21	72	107	103	110	104	0,96	1,71	1,31
BARNUM	PASSWORD	MOJO	A2A2	BB	4577	1129	1200	983	0,10	45	0,30	67	108	106	113	107	1,24	1,74	2,44
MAITAI	MAHOMES	FREEMAX	A2A2	BB	4575	1031	951	1425	0,58	114	0,26	76	103	100	106	106	1,25	1,40	1,20
KYRIOS FR	STRADIVARI	SPARK RED			4572	1034	1229	1442	-0,23	27	0,06	58	115	113	116	104	1,48	2,52	1,93
ZUSMAN	CAPTIVATING	PURSUIT	A2A2		4569	981	793	1107	0,37	82	0,30	72	101	104	112	104	1,69	1,91	1,35
VALE-T	TREATY	PANAMA	A2A2		4547	946	1016	865	0,25	61	0,22	54	113	112	113	100	1,61	2,95	1,22
DISTEFANO	HOTHAND	TOOHOT	A2A2		4544	1014	932	1419	0,30	82	0,18	68	110	107	114	106	1,45	2,44	0,58

USDA 08/2023

PFT Production Functionality Type

INDEX FOR THE ITALIAN HOLSTEIN BREED

PFT is the OFFICIAL ITALIAN SELECTION INDEX FOR THE ITALIAN HOLSTEIN BREED

and it is made of three elements:

Production, Functionality and Type.

It was last updated December 2019 moving part of the weight given to production and Type to Functionality.

It is published on a point scale and as an Estimated Breeding Value (EBV) i.e. the genetic **value of the bull itself**.



PRODUCTION
47%

Fat (Kg) 8%

Protein (Kg) 33%

Pct-fat (%) 3%

Pct-protein (%) 3%

FUNCTIONALITY
36%

Functional longevity 5%

Somatic cell count 5%

Daughter fertility 20%

Mastitis 6%

TYPE
17%

Overall Type 4%

Udder composite (ICM) 9%

Feet&Legs composite (IAP) 4%

KBB TOP 10



Naab Code	Nome	Sire	Mgs	A2A2	KBB	GPFT	TPI	NM\$	PTA Milk	PTA Fat	% Fat	PTA Pro	% Pro	SCS	PL	DPR	SCE	PTA Type	UDC	FLC
543H000294	FABIUS	ALTAZAZZLE	ALTALAWSON		BB	4664	2893	872	508	92	0,25	47	0,11	2,64	4,70	-0,30	1,90	1,32	1,41	0,43
543H000311	MAITAI	MAHOMES	FREEMAX	A2A2	BB	4575	2878	843	1051	102	0,21	54	0,07	2,93	2,80	-0,60	1,40	1,25	1,51	0,46
543H000291	MANTRA	TRY ME	YODA		BB	4645	2794	811	1069	65	0,08	60	0,09	2,74	5,00	-2,20	2,60	1,89	1,68	0,45
543H000304	LUDWIG	CAPONE	BRAMANTE	A2A2	BB	4482	2783	799	1495	60	0,01	65	0,06	2,72	4,80	-1,20	1,80	1,22	0,89	0,94
543H000313	BROLY	SENTIMENT	DEREK	A2A2	BB	4586	2781	679	1442	76	0,07	61	0,06	2,90	2,20	-1,10	2,30	1,90	1,11	1,01
543H000279	PORTOFINO	KUDOS	CASPER		BB	4278	2765	587	1491	56	0,00	62	0,05	2,83	1,90	-1,40	2,20	2,42	2,40	0,47
643H005544	PRINSTON	ALTAZINGLER	SIGILLO		BB	5008	2764	743	565	51	0,10	39	0,08	2,69	6,20	2,80	1,90	0,84	1,14	-0,23
543H000261	ELETTR0	GIORDANO	FLAGSHIP		BB	4465	2738	682	-5	69	0,25	32	0,11	2,61	4,50	2,00	2,00	0,84	1,70	-0,25
543H000295	TIALOCO	MAHOMES	REDROCK		BB	4530	2711	692	1054	28	-0,04	40	0,02	2,51	6,00	1,90	1,70	1,58	1,97	-0,08
543H000282	WALLY RED P	SOLITAIR P	ABI RED PP	A2A2	BB	3835	2628	687	925	68	0,11	45	0,06	3,01	3,20	-2,20	1,60	1,06	1,23	0,91

USDA 08/2023

A2A2 TOP 10



Naab Code	Nome	Legend	Sire	Mgs	A2A2	GPFT	TPI	NM\$	PTA Milk	PTA Fat	% Fat	PTA Pro	% Pro	SCS	PL	PTA DPR	SCE	PTA Type	UDC	FLC
643H005163	SEPTIMUS	LEGEND G	CAPTAIN	SUBZERO	A2A2	4402	3120	1049	1053	121	0,28	64	0,11	2,93	4,40	0,20	2,00	1,86	1,88	0,99
643H005542	HORIZON	LEGEND G	CAPTAIN	CHARL	A2A2	4320	3099	1078	1473	131	0,25	67	0,07	2,91	3,90	0,70	1,70	0,90	1,21	0,44
643H005166	LAMBERT	LEGEND G	CAPTAIN	CHARL	A2A2	4239	3088	1167	1769	123	0,18	67	0,04	2,78	5,40	0,40	1,50	0,61	0,94	-0,14
643H005164	LANCE		CAPTAIN	CHARL	A2A2	4261	3062	1119	1499	130	0,25	58	0,04	2,75	5,10	-0,60	1,90	0,87	1,35	0,22
643H005255	HADRIAN		CAPTAIN	CHARL	A2A2	4126	3055	1124	1734	127	0,20	61	0,02	2,94	4,90	-0,50	1,70	0,93	1,11	-0,02
643H005160	SUVAN		CAPTAIN	CHARL	A2A2	4444	3036	1138	1326	117	0,23	53	0,04	2,76	5,80	1,40	2,20	0,48	1,09	0,31
643H005174	BARUCH		CAPTAIN	IMAX	A2A2	4578	3034	998	1119	120	0,26	50	0,05	2,80	4,10	-1,30	1,70	1,76	2,22	1,00
643H005175	DELAINE		CAPTAIN	CRIMSON	A2A2	4519	3000	1085	1361	103	0,17	57	0,05	2,79	6,20	-0,60	1,90	0,82	1,69	0,63
643H005172	NORMAN		CAPTAIN	TOPSTONE	A2A2	4229	2985	1076	1574	117	0,19	60	0,04	2,83	4,40	-0,50	1,40	0,27	1,57	0,08
643H005168	CROCODILE		CAPTAIN	CHARL	A2A2	4285	2970	1036	1066	100	0,20	49	0,05	2,62	6,40	0,50	1,50	0,74	1,34	0,33

USDA 08/2023

Milk TOP 10



Naab Code	Nome	Legend	Sire	Mgs	A2A2	GPFT	TPI	NM\$	PTA Milk	PTA Fat	% Fat	PTA Pro	% Pro	SCS	PL	PTA DPR	SCE	PTA Type	UDC	FLC
643H005161	HEREWARD P		CAPTAIN	CHARL	A2A2	3870	2968	917	2318	0,06	0,06	66	-0,02	3,08	3,30	-1,40	1,70	1,77	2,04	0,63
643H005261	JUNO		CAPTAIN	TOPSTONE	A2A2	4214	2902	935	1977	-0,01	-0,01	67	0,02	2,83	4,90	0,00	1,50	1,1	1,39	0,84
643H005159	BOPPE		CAPTAIN	CHARL		3864	3035	1124	1951	0,17	0,17	73	0,04	2,95	3,60	-1,70	1,60	1,18	1,21	0,43
543H000270	BERTON		BOULEVARD	SOUND SYTEM		4226	2636	589	1854	-0,06	-0,06	55	-0,01	2,70	2,60	-2,10	2,70	1,72	1,46	0,29
543H000221	EMERITO		MONTOYA	JEDI		4234	2623	650	1831	-0,05	-0,05	67	0,03	2,82	3,60	-2,20	2,40	1,21	0,86	-0,71
643H005166	LAMBERT	LEGEND G	CAPTAIN	CHARL	A2A2	4239	3088	1167	1769	0,18	0,18	67	0,04	2,78	5,40	0,40	1,50	0,61	0,94	-0,14
643H005255	HADRIAN		CAPTAIN	CHARL	A2A2	4126	3055	1124	1734	0,20	0,20	61	0,02	2,94	4,90	-0,50	1,70	0,93	1,11	-0,02
643H005259	PALMA RC		CRISALIS	CHARL		4455	2908	974	1615	0,08	0,08	70	0,07	2,69	4,90	0,30	1,50	0,70	0,50	-0,06
543H000247	CARLOMAGNO		BRAMANTE	TABASCO		4449	2667	653	1599	-0,02	-0,02	69	0,07	2,84	3,40	-1,50	2,60	1,28	0,56	-0,37
543H000265	BRUNELLESCHI		ALTADATELINE	SOUND SYSTEM	A2A2	4073	2634	559	1587	0,01	0,01	55	0,02	2,79	0,70	-1,70	2,20	1,83	1,98	-0,58


USDA 08/2023

GTPI TOP 10



Naab Code	Nome	Legend	Sire	Mgs	A2A2	GPFT	TPI	NM\$	PTA Milk	PTA Fat	% Fat	PTA Pro	% Pro	SCS	PL	PTA DPR	SCE	PTA Type	UDC	FLC
643H005163	SEPTIMUS	LEGEND G	CAPTAIN	SUBZERO	A2A2	4402	3120	1049	1053	121	0,28	64	0,11	2,93	4,40	0,20	2,00	1,86	1,88	0,99
643H005162	PAKUNO	LEGEND G	CAPTAIN	CHARL		4029	3105	1154	1501	131	0,25	58	0,04	3,00	4,60	0,80	1,60	0,88	1,59	0,45
643H005542	HORIZON	LEGEND G	CAPTAIN	CHARL	A2A2	4320	3099	1078	1473	131	0,25	67	0,07	2,91	3,90	0,70	1,70	0,90	1,21	0,44
643H005166	LAMBERT	LEGEND G	CAPTAIN	CHARL	A2A2	4239	3088	1167	1769	123	0,18	67	0,04	2,78	5,40	0,40	1,50	0,61	0,94	-0,14
643H005164	LANCE		CAPTAIN	CHARL	A2A2	4261	3062	1119	1499	130	0,25	58	0,04	2,75	5,10	-0,60	1,90	0,87	1,35	0,22
643H005255	HADRIAN		CAPTAIN	CHARL	A2A2	4126	3055	1124	1734	127	0,20	61	0,02	2,94	4,90	-0,50	1,70	0,93	1,11	-0,02
643H005160	SUVAN		CAPTAIN	CHARL	A2A2	4444	3036	1138	1326	117	0,23	53	0,04	2,76	5,80	1,40	2,20	0,48	1,09	0,31
643H005159	BOPPE		CAPTAIN	CHARL		3864	3035	1124	1951	126	0,17	73	0,04	2,95	3,60	-1,70	1,60	1,18	1,21	0,43
643H005174	BARUCH		CAPTAIN	IMAX	A2A2	4578	3034	998	1119	120	0,26	50	0,05	2,80	4,10	-1,30	1,70	1,76	2,22	1,00
643H005175	DELAINE		CAPTAIN	CRIMSON	A2A2	4519	3000	1085	1361	103	0,17	57	0,05	2,79	6,20	-0,60	1,90	0,82	1,69	0,63

USDA 08/2023



Princeton

Altazingler x Al.Co.Bia. INSEME SUPER ET GP 84
(Sigillo) x Gioia INSEME EDELWEISS ET VG87 (Casper)


GPFT: **5008** IES€: **1323**
ICS-PR€: **1629** DPR: **119**

1# Italian Genomic gPFT KBB
2# Italian Genomic gPFT

TOP 10 INTERNATIONAL GENOMIC PFT

2# Italian genomic for IES
1# Italian genomic for ICS-PR
1# Italian genomic for DPR

1°
2°



Septimus

Captain x SUAMI (Subzero)
x Comestar LAUMABLA (Doc)
x Comestar LAUMAY (Jedi)
discendente dalla famiglia
di Comestar LAUTAMIE

GPFT: **4402**
GTPI: **3120**
MILK: **185**
PTAT: **1.86**
UDC: **1.88**

Highest INSEME gTPI
Genomic bull available

TOP 50 Genomic bull high
ranking in gTPI available

1°

NM\$ TOP 10



Naab Code	Nome	Legend	Sire	Mgs	A2A2	GPFT	TPI	NM\$	PTA Milk	PTA Fat	% Fat	PTA Pro	% Pro	SCS	PL	PTA DPR	SCE	PTA Type	UDC	FLC
643H005166	LAMBERT	LEGEND G	CAPTAIN	CHARL	A2A2	4239	3088	1167	1769	123	0,18	67	0,04	2,78	5,40	0,40	1,50	0,61	0,94	-0,14
643H005162	PAKUNO	LEGEND G	CAPTAIN	CHARL		4029	3105	1154	1501	131	0,25	58	0,04	3,00	4,60	0,80	1,60	0,88	1,59	0,45
643H005160	SUVAN		CAPTAIN	CHARL	A2A2	4444	3036	1138	1326	117	0,23	53	0,04	2,76	5,80	1,40	2,20	0,48	1,09	0,31
643H005255	HADRIAN		CAPTAIN	CHARL	A2A2	4126	3055	1124	1734	127	0,20	61	0,02	2,94	4,90	-0,50	1,70	0,93	1,11	-0,02
643H005159	BOPPE		CAPTAIN	CHARL		3864	3035	1124	1951	126	0,17	73	0,04	2,95	3,60	-1,70	1,60	1,18	1,21	0,43
643H005164	LANCE		CAPTAIN	CHARL	A2A2	4261	3062	1119	1499	130	0,25	58	0,04	2,75	5,10	-0,60	1,90	0,87	1,35	0,22
643H005169	CARTIER		CAPTAIN	KENNEDY		4459	2997	1089	1082	98	0,19	56	0,08	2,89	6,20	1,60	1,60	0,49	1,20	0,23
643H005175	DELAINE		CAPTAIN	CRIMSON	A2A2	4519	3000	1085	1361	103	0,17	57	0,05	2,79	6,20	-0,60	1,90	0,82	1,69	0,63
643H005542	HORIZON	LEGEND G	CAPTAIN	CHARL	A2A2	4320	3099	1078	1473	131	0,25	67	0,07	2,91	3,90	0,70	1,70	0,90	1,21	0,44
643H005172	NORMAN		CAPTAIN	TOPOSTONE	A2A2	4229	2985	1076	1574	117	0,19	60	0,04	2,83	4,40	-0,50	1,40	0,27	1,57	0,08

USDA 08/2023

Polled

IT017992284863 - 543HO00255 - aAa 342

SEXED SEMEN *Made in Italy*
FOEMINA
Sexed **ULTRA**

ZANI INSEME

ALCEROSSO PR



Zani Inseme Alcerosso

SOLITAIR P × **MISSION P** × **SILVER**
Mr Salvatore x Balisto × Zani Mission P Ramina MB85 × Zani Silver Ambra MB86

TPI +2687 **NET MERIT \$** +793 **CHEESE MERIT \$** +806

► **PRODUCTION TRAITS** (81% REL)

Milk	% Fat	Fat	% Protein	Protein
+1137 lbs	+0,09	+69	+0,06	+54
K Cas AB		Beta Lact AA		Beta Cas A1A2

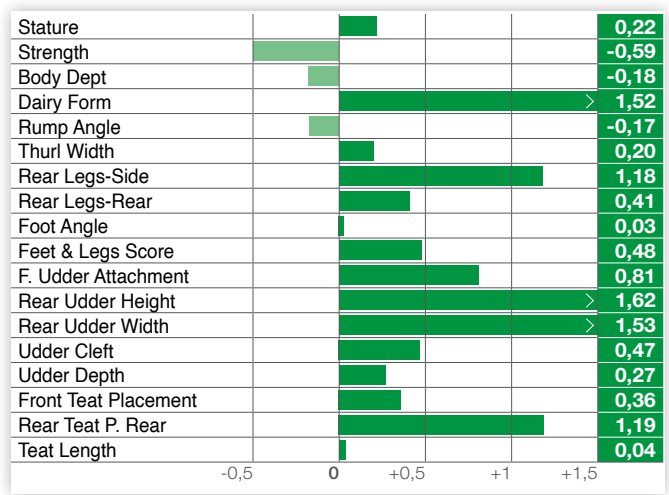
► **HEALTH TRAITS**

SCS	+2,91	SCE	+1,70
PL	+3,90	DCE	+2,40
DPR	-1,10	FI	-0,90

Free Haplotypes
[i-][i-][i-]

► **TYPE TRAITS**

PTAT **+0,90** UDC **+1,04** FLC **+0,39**



Polled

LUIS-OOH INSEME

APPIUS RED PR

IT018990237944 - 543HO00253 - aAa 432

SEXED SEMEN *Made in Italy*
FOEMINA
Sexed **ULTRA 4M**



Luis-Ooh Inseme Appius Red Cd

SOLITAIR P × **APPRENTICE** × **DELTA**
Mr Salvatore x Balisto × Luis-Ooh Suning × Hermosa Delta Luigia B+82

TPI +2680 **NET MERIT \$** +795 **CHEESE MERIT \$** +812

► **PRODUCTION TRAITS** (81% REL)

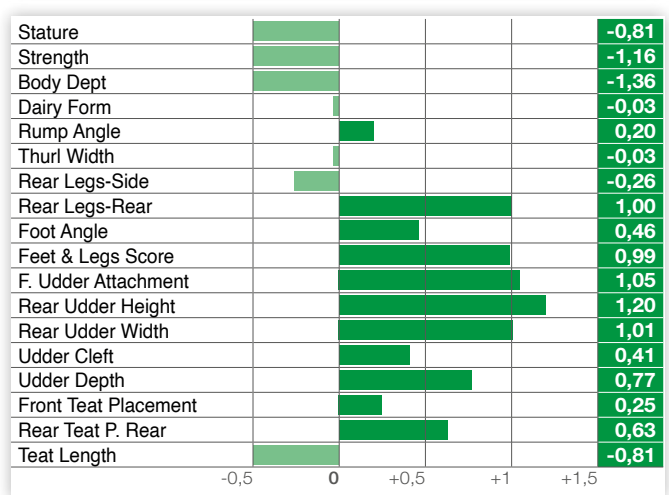
Milk	% Fat	Fat	% Protein	Protein
+641 lbs	+0,06	+43	+0,08	+43
K Cas BE		Beta Lact AA		Beta Cas A1A1

► **HEALTH TRAITS**

SCS	+2,82	SCE	+1,30
PL	+6,00	DCE	+1,70
DPR	+0,90	FI	+1,00

► **TYPE TRAITS**

PTAT **+0,36** UDC **+1,14** FLC **+1,22**



New

SERRA FARM
ARETINO

ARETINO

IT001991144894 - 543HO00218



PADAWAN

Jedi x Enforcer

SUPERSHOT

Serra Farm Aryel ET
VG85

TANGO UNO

Serra Farm Tango
Vera VG88

TPI

+2433

NET MERIT \$

+384

CHEESE MERIT \$

+392

► PRODUCTION TRAITS (81% REL)

Milk	% Fat	Fat	% Protein	Protein
+1316 lbs	-0,10	+22	+0,01	+44
K Cas AB		Beta Lact AA		Beta Cas A2A2

► HEALTH TRAITS

SCS	+2,73	SCE	+2,20
PL	+3,10	DCE	+2,30
DPR	+1,10	FI	+1,20



Rimbosio Supershot

Free Haplotypes
[i-][i-][i-]

► TYPE TRAITS

PTAT **+0,61** UDC **+0,59** FLC **-0,59**

Stature				1,56
Strength				1,47
Body Dept				0,71
Dairy Form				0,05
Rump Angle				0,61
Thurl Width				1,50
Rear Legs-Side				-2,35
Rear Legs-Rear				0,01
Foot Angle				0,97
Feet & Legs Score				-0,23
F. Udder Attachment				1,10
Rear Udder Height				0,67
Rear Udder Width				0,92
Udder Cleft				0,69
Udder Depth				1,17
Front Teat Placement				0,39
Rear Teat P. Rear				0,64
Teat Length				-0,36

-0,5 0 +0,5 +1 +1,5

DG

ASTER RC

NL000634722745 - 643HO05170

SEXED SEMEN *Made in Italy*
FOEMINA
Sexed **ULTRA 4M**

DG Aster

CAPTAIN

Charl x Sabre

RONALD

DG OH Audrey ET

ARGO

OH DG Agrorio
Red ETTPI
+2974NET MERIT \$
+977CHEESE MERIT \$
+992

► PRODUCTION TRAITS (81% REL)

Milk	% Fat	Fat	% Protein	Protein
+1236 lbs	+0,16	+95	+0,05	+54
K Cas AB		Beta Lact AA		Beta Cas A1A2

► HEALTH TRAITS

SCS	+2,74	SCE	+1,70
PL	+4,70	DCE	+2,10
DPR	+0,20	FI	+0,60

Free Haplotypes
[i-][i-][i-]

► TYPE TRAITS

PTAT **+1,36** UDC **+1,76** FLC **+1,10**

Stature				0,26
Strength				-0,76
Body Dept				-0,33
Dairy Form				1,61
Rump Angle				0,20
Thurl Width				0,60
Rear Legs-Side				0,43
Rear Legs-Rear				1,04
Foot Angle				0,15
Feet & Legs Score				1,16
F. Udder Attachment				1,70
Rear Udder Height				2,90
Rear Udder Width				2,25
Udder Cleft				0,25
Udder Depth				1,01
Front Teat Placement				0,59
Rear Teat P. Rear				0,30
Teat Length				-1,08

-0,5 0 +0,5 +1 +1,5

ISOLABELLA
INSEME

ATHOS RED R

IT001991454481 - 543HO00306

SEXED SEMEN *Made in Italy*
FOEMINA
Sexed **ULTRA 4M**

FREESTYLE-RED

Gywer x Will Born

GYWER

Luis-Ooh Inseme
Brillante Red

APPRENTICE

Luis-Ooh Suning ET

TPI
+2688

NET MERIT \$
+749

CHEESE MERIT \$
+760



Isolabella Inseme Athos Red

► **PRODUCTION TRAITS (79% REL)**

Milk	% Fat	Fat	% Protein	Protein
+947 lbs	+0,03	+45	+0,02	+34
K Cas AA		Beta Lact AA		Beta Cas A1A2

► **HEALTH TRAITS**

SCS	+2,61	SCE	+1,10
PL	+6,50	DCE	+1,50
DPR	+1,70	FI	+1,80

► **TYPE TRAITS**

PTAT **+0,48** UDC **+1,12** FLC **+1,00**

Stature	-0,07
Strength	-0,56
Body Dept	-1,10
Dairy Form	-0,93
Rump Angle	0,11
Thurl Width	-0,73
Rear Legs-Side	-1,43
Rear Legs-Rear	1,22
Foot Angle	1,05
Feet & Legs Score	0,87
F. Udder Attachment	0,94
Rear Udder Height	1,40
Rear Udder Width	0,84
Udder Cleft	0,22
Udder Depth	1,57
Front Teat Placement	0,07
Rear Teat P. Rear	-0,29
Teat Length	-0,07

Free **Haplotypes**
[i-][i-][i-]

PALASSOTTO
INSEME

AVON

IT004992215987 - 543HO00286 - aAa 423

SEXED SEMEN *Made in Italy*
FOEMINA
Sexed **ULTRA 4M**

KONRAD

Hotjob x Jedi

WORLD CLASS

CO-OP Yola 9168

FRAZZLED

CO-OP Frazzled
8114 8561

TPI
+2798

NET MERIT \$
+797

CHEESE MERIT \$
+812



Palassotto Inseme Avon

► **PRODUCTION TRAITS (79% REL)**

Milk	% Fat	Fat	% Protein	Protein
+827 lbs	+0,15	+76	+0,06	+42
K Cas AA		Beta Lact AA		Beta Cas A2A2

► **HEALTH TRAITS**

SCS	+2,74	SCE	+2,00
PL	+4,70	DCE	+1,90
DPR	+0,70	FI	+1,40

► **TYPE TRAITS**

PTAT **+0,72** UDC **+1,50** FLC **-0,22**

Stature	0,41
Strength	0,20
Body Dept	-0,42
Dairy Form	-0,86
Rump Angle	-0,54
Thurl Width	0,14
Rear Legs-Side	-1,12
Rear Legs-Rear	-0,23
Foot Angle	0,89
Feet & Legs Score	-0,11
F. Udder Attachment	2,35
Rear Udder Height	1,35
Rear Udder Width	0,82
Udder Cleft	0,48
Udder Depth	2,57
Front Teat Placement	0,51
Rear Teat P. Rear	0,50
Teat Length	-1,18

Free **Haplotypes**
[i-][i-][i-]



New

DGF

BARUCH Legend

CAPTAIN

Charl x Sabre

X

IMAX

DGF Brenda ET

X

SILVER

DKR Baccardi ET

TPI
+3034
NET MERIT \$
+998
CHEESE MERIT \$
+1011
PRODUCTION TRAITS (81% REL)

Milk	% Fat	Fat	% Protein	Protein
+1119 lbs	+0,26	+120	+0,05	+50
K Cas AB		Beta Lact AB		Beta Cas A2A2

HEALTH TRAITS

SCS	+2,80	SCE	+1,70
PL	+4,10	DCE	+1,70
DPR	-1,30	FI	-0,20

Free Haplotypes


DE001406709038 - CF TL - 643HO05174

 SEXED SEMEN *Made in Italy*
FOEMINA
 Sexed **ULTRA 4M**


DGF Baruch

TYPE TRAITS
PTAT +1,76 UDC +2,22 FLC +1,00

Stature				0,48
Strength				-0,55
Body Dept				-0,52
Dairy Form				0,94
Rump Angle				0,02
Thurl Width				1,54
Rear Legs-Side				0,67
Rear Legs-Rear				0,98
Foot Angle				0,36
Feet & Legs Score				1,10
F. Udder Attachment				2,12
Rear Udder Height				3,12
Rear Udder Width				2,46
Udder Cleft				0,83
Udder Depth				2,09
Front Teat Placement				0,50
Rear Teat P. Rear				1,04
Teat Length				-1,15

New

DG AZZOPARDI

BELCANTO

CAPTAIN

Charl x Sabre

X

DISCJOCKEY

Go-Farm Bomdila

X

CHARLEY

Go-Farm Bolivia ET

TPI
+2980
NET MERIT \$
+964
CHEESE MERIT \$
+986
PRODUCTION TRAITS (81% REL)

Milk	% Fat	Fat	% Protein	Protein
+707 lbs	+0,32	+118	+0,10	+51
K Cas AA		Beta Lact AB		Beta Cas A1A2

HEALTH TRAITS

SCS	+2,71	SCE	+1,80
PL	+4,70	DCE	+2,30
DPR	-1,30	FI	-0,40

Glen-D-Haven Oman Biffy-ET


Free Haplotypes

BE000817552326 - TL - 643HO05256

 SEXED SEMEN *Made in Italy*
FOEMINA
 Sexed **ULTRA 4M**


DG Azzopardi Belcanto

TYPE TRAITS
PTAT +1,27 UDC +1,70 FLC +0,68

Stature				0,79
Strength				-0,11
Body Dept				-0,09
Dairy Form				0,71
Rump Angle				-0,02
Thurl Width				0,61
Rear Legs-Side				-0,96
Rear Legs-Rear				0,88
Foot Angle				0,42
Feet & Legs Score				0,83
F. Udder Attachment				1,96
Rear Udder Height				2,57
Rear Udder Width				2,07
Udder Cleft				0,37
Udder Depth				1,57
Front Teat Placement				0,34
Rear Teat P. Rear				0,40
Teat Length				-0,88

GO-FARM BELLAGIO

IT019991728989 - 543HO00191 - aAa 432516

SEXED SEMEN *made in Italy*
FOEMINA
Sexed **ULTRA**



IMAX × **HOTROD** × **MCCUTCHEM**
Spring x Mogul × Go-Farm-Bomba MB85 × Go-Farm Brashine EX91

TPI +2676 **NET MERIT \$** +614 **CHEESE MERIT \$** +622

► **PRODUCTION TRAITS** (82% REL)

Milk	% Fat	Fat	% Protein	Protein
+984 lbs	+0,09	+65	+0,04	+43
K Cas AA		Beta Lact BB		Beta Cas A2A2

► **HEALTH TRAITS**

SCS	+3,00	SCE	+2,10
PL	+2,70	DCE	+2,00
DPR	-1,80	FI	-0,80

► **TYPE TRAITS**

PTAT **+1,78** UDC **+2,03** FLC **+0,80**

Stature	>	2,29
Strength	>	1,12
Body Dept	>	0,94
Dairy Form	>	0,77
Rump Angle	>	0,74
Thurl Width	>	1,96
Rear Legs-Side	>	0,33
Rear Legs-Rear	>	1,54
Foot Angle	>	1,28
Feet & Legs Score	>	1,13
F. Udder Attachment	>	2,84
Rear Udder Height	>	2,54
Rear Udder Width	>	2,24
Udder Cleft	>	1,55
Udder Depth	>	2,98
Front Teat Placement	>	1,91
Rear Teat P. Rear	>	1,77
Teat Length	<	-1,65



CRISTELLA INSEME BERTON

IT019991987840 - 543HO00270 - aAa 234



BOULEVARD × **SOUND SYSTEM** × **JEDI**
Router x Afterburner × Cristella MB85 × Cristella Mamey B79

TPI +2636 **NET MERIT \$** +589 **CHEESE MERIT \$** +594

► **PRODUCTION TRAITS** (81% REL)

Milk	% Fat	Fat	% Protein	Protein
+1854 lbs	-0,06	+54	-0,01	+55
K Cas AB		Beta Lact AA		Beta Cas A1A2

► **HEALTH TRAITS**

SCS	+2,70	SCE	+2,70
PL	+2,60	DCE	+2,90
DPR	-2,10	FI	-1,20

► **TYPE TRAITS**

PTAT **+1,72** UDC **+1,46** FLC **+0,29**

Stature	>	1,64
Strength	>	1,09
Body Dept	>	1,57
Dairy Form	>	2,36
Rump Angle	>	0,76
Thurl Width	>	0,70
Rear Legs-Side	>	0,47
Rear Legs-Rear	>	0,55
Foot Angle	>	0,80
Feet & Legs Score	>	0,63
F. Udder Attachment	>	1,10
Rear Udder Height	>	2,59
Rear Udder Width	>	2,77
Udder Cleft	>	1,53
Udder Depth	>	0,38
Front Teat Placement	>	1,47
Rear Teat P. Rear	>	1,77
Teat Length	<	-0,20



LA PORTEA
INSEME**BLANCO**

IT103990033871 - 543H000290 - aAa 243

SEXED SEMEN *Made in Italy*
FOEMINA
Sexed **ULTRA 4M****EINSTEIN**

Topnotch x Duke

CASPERIsolabella Inseme
Beautiful MB86**HOTROD**Isolabella Royal
Bamby B+84**TPI****+ 2800****NET MERIT \$****+693****CHEESE MERIT \$****+711****PRODUCTION TRAITS (81% REL)**

Milk	% Fat	Fat	% Protein	Protein
+1063 lbs	+0,17	+90	+0,07	+53
K Cas AB		Beta Lact AA		Beta Cas A1A2

HEALTH TRAITS

SCS	+2,68	SCE	+2,50
PL	+2,30	DCE	+2,50
DPR	-1,80	FI	-1,60

**Free Haplotypes**
[i-][i-][i-]**TYPE TRAITS**PTAT **+2,01** UDC **+2,20** FLC **-0,25**

Stature				1,78
Strength				1,26
Body Dept				1,16
Dairy Form				1,20
Rump Angle				0,67
Thurl Width				2,25
Rear Legs-Side				-0,70
Rear Legs-Rear				-0,37
Foot Angle				0,58
Feet & Legs Score				0,28
F. Udder Attachment				2,37
Rear Udder Height				2,65
Rear Udder Width				3,52
Udder Cleft				2,23
Udder Depth				1,61
Front Teat Placement				1,33
Rear Teat P. Rear				1,96
Teat Length				0,00

-0,5 0 +0,5 +1 +1,5

DG

BOPPE**Legend**

DE001406512669 - 643H005159

SEXED SEMEN *Made in Italy*
FOEMINA
Sexed **ULTRA 4M****CAPTAIN**

Charl x Sabre

CHARL

DG Brenna ET

FLAGSHIPMS DG-TM Flagship
Buoy-ET**TPI****+3035****NET MERIT \$****+1124****CHEESE MERIT \$****+1133****PRODUCTION TRAITS (81% REL)**

Milk	% Fat	Fat	% Protein	Protein
+1951 lbs	+0,17	+126	+0,04	+73
K Cas AE		Beta Lact AA		Beta Cas A1A2

HEALTH TRAITS

SCS	+2,95	SCE	+1,60
PL	+3,60	DCE	+2,00
DPR	-1,70	FI	-0,80

TYPE TRAITSPTAT **+1,18** UDC **+1,21** FLC **+0,43**

Stature				-0,78
Strength				-1,39
Body Dept				-0,61
Dairy Form				2,11
Rump Angle				-0,75
Thurl Width				0,45
Rear Legs-Side				0,23
Rear Legs-Rear				-0,05
Foot Angle				-0,99
Feet & Legs Score				0,40
F. Udder Attachment				0,62
Rear Udder Height				2,14
Rear Udder Width				1,98
Udder Cleft				0,06
Udder Depth				-0,22
Front Teat Placement				0,15
Rear Teat P. Rear				0,32
Teat Length				-1,07

-0,5 0 +0,5 +1 +1,5

Free Haplotypes
[i-][i-][i-]

New

CASCINA GIOBBI
INSEME

BROLY

IT004992481719 - TL TM TV TY - 543HO00313



Cascina Giobbi Inseme Broly

SENTIMENT

Acura x Spectre

DEREK

Cascina Giobbi
Diamante - VG85

HOTLINE

Cascina Giobbi
Hotline Bolivia

TPI

+2781

NET MERIT \$

+679

CHEESE MERIT \$

+691

► **PRODUCTION TRAITS (79% REL)**

Milk	% Fat	Fat	% Protein	Protein
+1442 lbs	+0,07	+76	+0,06	+61
K Cas BB		Beta Lact AB		Beta Cas A2A2

► **HEALTH TRAITS**

SCS	+2,90	SCE	+2,30
PL	+2,20	DCE	+2,40
DPR	-1,10	FI	-0,30

► **TYPE TRAITS**

PTAT **+1,90** UDC **+1,11** FLC **+1,01**

Stature	>	2,31
Strength	>	1,66
Body Dept	>	1,74
Dairy Form	>	1,89
Rump Angle	<	-0,10
Thurl Width	>	1,46
Rear Legs-Side	<	-0,04
Rear Legs-Rear	>	1,44
Foot Angle	>	1,69
Feet & Legs Score	>	1,40
F. Udder Attachment	>	1,28
Rear Udder Height	>	1,65
Rear Udder Width	>	2,38
Udder Cleft	>	1,39
Udder Depth	>	0,91
Front Teat Placement	>	1,57
Rear Teat P. Rear	>	1,67
Teat Length	<	-0,29



ISOLABELLA
INSEME

BRUNELLESCHI

IT001991277819 - 543HO00265 - aAa 243



Isolabella Inseme Brunelleschi

DATLINE

Hotline x Montross

SOUND SYSTEM

Isolabella Cicala
MB86

HOTROD

Isolabella Royal
Bamby B+84

TPI

+2634

NET MERIT \$

+559

CHEESE MERIT \$

+567

► **PRODUCTION TRAITS (81% REL)**

Milk	% Fat	Fat	% Protein	Protein
+1587 lbs	+0,01	+63	+0,02	+55
K Cas AA		Beta Lact AB		Beta Cas A2A2

► **HEALTH TRAITS**

SCS	+2,79	SCE	+2,20
PL	+0,70	DCE	+1,40
DPR	-1,70	FI	-1,40

► **TYPE TRAITS**

PTAT **+1,83** UDC **+1,98** FLC **-0,58**

Stature	>	2,48
Strength	>	0,86
Body Dept	>	1,22
Dairy Form	>	2,22
Rump Angle	>	1,79
Thurl Width	>	1,10
Rear Legs-Side	<	-0,79
Rear Legs-Rear	<	-0,09
Foot Angle	>	1,08
Feet & Legs Score	<	-0,05
F. Udder Attachment	>	2,49
Rear Udder Height	>	3,06
Rear Udder Width	>	2,91
Udder Cleft	>	1,29
Udder Depth	>	1,80
Front Teat Placement	>	1,20
Rear Teat P. Rear	>	1,26
Teat Length	<	-0,09

Free Haplotypes
[i]-[i]-[i]



New

Polled

DG

BUTLER P

DE001505261050 - CF TL PC - 643HO05263

SEXED SEMEN *Made in Italy*
FOEMINA
Sexed **ULTRA 4M**



DG Butler

FOREMAN

SIMON-P

GYMNAST

Freemax x Rubicon

RHO 18596 ET

RHO Bailey ET- VG87

TPI
+2779

NET MERIT \$
+784

CHEESE MERIT \$
+794

► **PRODUCTION TRAITS** (79% REL)

Milk	% Fat	Fat	% Protein	Protein
+1508 lbs	+0,02	+64	+0,05	+61
K Cas AB		Beta Lact AB		Beta Cas A2A2

► **HEALTH TRAITS**

SCS	+2,91	SCE	+1,70
PL	+4,10	DCE	+1,70
DPR	-0,80	FI	+0,40

► **TYPE TRAITS**

PTAT **+1,16** UDC **+1,12** FLC **+0,67**

Stature				-0,34
Strength				0,46
Body Dept				0,23
Dairy Form				0,64
Rump Angle				-1,40
Thurl Width				0,91
Rear Legs-Side				0,59
Rear Legs-Rear				0,79
Foot Angle				0,30
Feet & Legs Score				0,51
F. Udder Attachment				1,29
Rear Udder Height				1,39
Rear Udder Width				1,90
Udder Cleft				-0,14
Udder Depth				0,27
Front Teat Placement				0,15
Rear Teat P. Rear				-0,51
Teat Length				0,27

Free Haplotypes



IDEVRA ROYAL INSEME

CARLOMAGNO

IT019991894420 - 543HO00247 - aAa 234

SEXED SEMEN *Made in Italy*
FOEMINA
Sexed **ULTRA 4M**



Idevra Royal Inseme Carlomagno

BRAMANTE

TABASCO

SUPERSHOT

Sound System x Hotrod

Idevra Tabasco Roberto MB87

Idevra Royal Carlina B+81

TPI
+2667

NET MERIT \$
+653

CHEESE MERIT \$
+668

► **PRODUCTION TRAITS** (81% REL)

Milk	% Fat	Fat	% Protein	Protein
+1599 lbs	-0,02	+57	+0,07	+69
K Cas BE		Beta Lact AA		Beta Cas A1A2

► **HEALTH TRAITS**

SCS	+2,84	SCE	+2,60
PL	+3,40	DCE	+2,50
DPR	-1,50	FI	-0,80

► **TYPE TRAITS**

PTAT **+1,28** UDC **+0,56** FLC **-0,37**

Stature				2,40
Strength				0,49
Body Dept				1,07
Dairy Form				2,39
Rump Angle				1,02
Thurl Width				1,79
Rear Legs-Side				2,19
Rear Legs-Rear				-0,08
Foot Angle				0,32
Feet & Legs Score				0,34
F. Udder Attachment				0,63
Rear Udder Height				0,88
Rear Udder Width				1,66
Udder Cleft				1,43
Udder Depth				0,95
Front Teat Placement				0,81
Rear Teat P. Rear				1,10
Teat Length				-0,75

Free Haplotypes



Idevra Tabasco

DG CARTIER Legend

DE001406512947 - 643H005169



CAPTAIN x **KENNEDY** x **JEDI**
 Charl x Sabre x DG Chrysta ET x Veelhorst Chrystal ET

TPI +2997 **NET MERIT \$** +1089 **CHEESE MERIT \$** +1104

PRODUCTION TRAITS (81% REL)				
Milk	% Fat	Fat	% Protein	Protein
+1082 lbs	+0,19	+98	+0,08	+56
K Cas AB		Beta Lact AA		Beta Cas A1A2

HEALTH TRAITS			
SCS	+2,89	SCE	+1,60
PL	+6,20	DCE	+1,50
DPR	+1,60	FI	+2,00



Free Haplotypes



TYPE TRAITS			
PTAT	+0,49	UDC	+1,20
FLC		+0,23	

Stature				-0,81
Strength				-1,22
Body Dept				-1,26
Dairy Form				0,47
Rump Angle				0,21
Thurl Width				0,29
Rear Legs-Side				0,31
Rear Legs-Rear				-0,10
Foot Angle				-0,83
Feet & Legs Score				0,15
F. Udder Attachment				0,94
Rear Udder Height				1,45
Rear Udder Width				1,29
Udder Cleft				0,13
Udder Depth				0,77
Front Teat Placement				0,09
Rear Teat P. Rear				0,27
Teat Length				-0,67

IDEVRA ROYAL CELLINI

IT019991816264 - 543HO00220 - aAa 423



NEBULA x **JAGGER** x **JUDO**
 Charley x Balisto x Idevra Jagger B+78 x Idevra Royal Celeste B+84

TPI +2522 **NET MERIT \$** +562 **CHEESE MERIT \$** +567

PRODUCTION TRAITS (81% REL)				
Milk	% Fat	Fat	% Protein	Protein
+1169 lbs	+0,00	+44	+0,01	+38
K Cas BB		Beta Lact AB		Beta Cas A2A2

HEALTH TRAITS			
SCS	+2,82	SCE	+1,90
PL	+2,50	DCE	+1,60
DPR	-0,20	FI	+0,80

Free Haplotypes



TYPE TRAITS			
PTAT	+0,68	UDC	+0,47
FLC		+0,38	

Stature				0,27
Strength				-0,08
Body Dept				0,28
Dairy Form				1,07
Rump Angle				-0,12
Thurl Width				1,11
Rear Legs-Side				0,33
Rear Legs-Rear				0,52
Foot Angle				0,36
Feet & Legs Score				0,39
F. Udder Attachment				0,22
Rear Udder Height				0,73
Rear Udder Width				0,91
Udder Cleft				1,09
Udder Depth				-0,32
Front Teat Placement				1,39
Rear Teat P. Rear				1,26
Teat Length				0,67

CGF CROCODILE Legend

DE001406512921 - 643H005168

 SEXED SEMEN *Made in Italy*
FOEMINA
 Sexed **ULTRA 4M**
CAPTAIN

Charl x Sabre

CHARL

DGF Clem ET

MONTANA

Eba Martha ET

TPI
 + 2970

NET MERIT \$
 +1036

CHEESE MERIT \$
 +1053

PRODUCTION TRAITS (81% REL)

Milk	% Fat	Fat	% Protein	Protein
+1066 lbs	+0,20	+100	+0,05	+49
K Cas AB		Beta Lact AA		Beta Cas A2A2

HEALTH TRAITS

SCS	+2,62	SCE	+1,50
PL	+6,40	DCE	+1,80
DPR	+0,50	FI	+0,90

TYPE TRAITS
PTAT +0,74 UDC +1,34 FLC +0,33

Stature				-0,48
Strength				-1,01
Body Dept				-1,09
Dairy Form				-0,09
Rump Angle				0,89
Thurl Width				-0,08
Rear Legs-Side				0,03
Rear Legs-Rear				-0,23
Foot Angle				-0,58
Feet & Legs Score				0,39
F. Udder Attachment				> 1,57
Rear Udder Height				> 1,69
Rear Udder Width				0,96
Udder Cleft				0,20
Udder Depth				1,27
Front Teat Placement				0,05
Rear Teat P. Rear				0,02
Teat Length				-0,75

Free Haplotypes
BORETTO
INSEME

DADO

IT001991210622 - 543HO00241 - aAa 324

OUTBACK

Spectre x Troy

FRANCHISE

Boretto MB85

MOGULBoretto Uganda Gmv
MB88
TPI
 +2633

NET MERIT \$
 +737

CHEESE MERIT \$
 +751

PRODUCTION TRAITS (81% REL)

Milk	% Fat	Fat	% Protein	Protein
+183 lbs	+0,24	+74	+0,06	+22
K Cas AB		Beta Lact AA		Beta Cas A2A2

HEALTH TRAITS

SCS	+2,76	SCE	+0,80
PL	+4,40	DCE	+1,60
DPR	+0,50	FI	+0,90

TYPE TRAITS
PTAT +0,28 UDC +1,09 FLC -0,01

Stature				-0,75
Strength				-1,21
Body Dept				-1,17
Dairy Form				0,12
Rump Angle				-0,03
Thurl Width				-0,51
Rear Legs-Side				-1,71
Rear Legs-Rear				0,03
Foot Angle				0,43
Feet & Legs Score				-0,19
F. Udder Attachment				1,47
Rear Udder Height				1,01
Rear Udder Width				0,59
Udder Cleft				-0,56
Udder Depth				1,30
Front Teat Placement				0,22
Rear Teat P. Rear				-0,01
Teat Length				-0,32

Free Haplotypes


New

DG

DELAINÉ

Legend

DE001406709032 - CF TL - 643HO05175

SEXED SEMEN *Made in Italy*
FOEMINA
Sexed **ULTRA 4M**



CAPTAIN

Charl x Sabre

CRIMSON

Gen Durkje ET

CHARLEY

DG Ariana ET - GP84

TPI

+ 3000

NET MERIT \$

+1085

CHEESE MERIT \$

+1098

► **PRODUCTION TRAITS** (81% REL)

Milk	% Fat	Fat	% Protein	Protein
+1361 lbs	+0,17	+103	+0,05	+57
K Cas AB		Beta Lact AA		Beta Cas A2A2

► **HEALTH TRAITS**

SCS	+2,79	SCE	+1,90
PL	+6,20	DCE	+1,80
DPR	-0,60	FI	+0,10

Free **Haplotypes**
[i]-[i]-[i]



► **TYPE TRAITS**

PTAT **+0,82** UDC **+1,69** FLC **+0,63**

Stature	-0,12
Strength	-1,34
Body Dept	-1,26
Dairy Form	0,67
Rump Angle	0,44
Thurl Width	-0,16
Rear Legs-Side	-0,48
Rear Legs-Rear	0,37
Foot Angle	0,05
Feet & Legs Score	0,66
F. Udder Attachment	> 1,94
Rear Udder Height	> 2,08
Rear Udder Width	1,40
Udder Cleft	0,01
Udder Depth	> 2,08
Front Teat Placement	-0,20
Rear Teat P. Rear	-0,11
Teat Length	-0,50

IDEVRA
INSEME

DESICA

IT019992032586 - 543HO00254 - aAa 342

SEXED SEMEN *Made in Italy*
FOEMINA
Sexed **ULTRA**



DEREK

Charley x 1stclass

SOUND SYSTEM

Baro Sound Inseme
Diletta MB85

MAZZARRI

Baro Mazzarri
Boston MB87

TPI
+2632

NET MERIT \$
+690

CHEESE MERIT \$
+715

► **PRODUCTION TRAITS** (82% REL)

Milk	% Fat	Fat	% Protein	Protein
-110 lbs	+0,19	+48	+0,12	+29
K Cas BB		Beta Lact AA		Beta Cas A1A2

► **HEALTH TRAITS**

SCS	+2,66	SCE	+2,00
PL	+5,00	DCE	+2,10
DPR	+2,30	FI	+2,40



► **TYPE TRAITS**

PTAT **+0,44** UDC **+1,00** FLC **-0,40**

Stature	0,12
Strength	-0,47
Body Dept	-0,43
Dairy Form	0,10
Rump Angle	-0,21
Thurl Width	-0,58
Rear Legs-Side	0,51
Rear Legs-Rear	-0,61
Foot Angle	-0,08
Feet & Legs Score	-0,27
F. Udder Attachment	> 1,54
Rear Udder Height	0,77
Rear Udder Width	-0,04
Udder Cleft	1,22
Udder Depth	> 1,69
Front Teat Placement	1,25
Rear Teat P. Rear	> 1,81
Teat Length	-1,08

ISOLABELLA
INSEME

DISTEFANO

HOTHAND

Hotline x Montross

TOOHOT

Go-Farm Island

SUPERMAN

Kns Inka MB85

TPI
+2811NET MERIT \$
+740CHEESE MERIT \$
+759

► PRODUCTION TRAITS (81% REL)

Milk	% Fat	Fat	% Protein	Protein
+1028 lbs	+0,11	+72	+0,07	+53
K Cas AA		Beta Lact AB		Beta Cas A2A2

► HEALTH TRAITS

SCS	+2,67	SCE	+1,80
PL	+3,60	DCE	+2,20
DPR	-1,20	FI	-0,50

Free Haplotypes
[i]-[i]-[i]-[i]

IT001991277781 - 543HO00252 - aAa 432

SEXED SEMEN *Made in Italy*
FOEMINA
Sexed **ULTRA 4M**

► TYPE TRAITS

PTAT **+1,75** UDC **+2,03** FLC **+0,13**

Stature	>	2,02
Strength	>	0,88
Body Dept	>	0,87
Dairy Form	>	0,94
Rump Angle	>	0,98
Thurl Width	>	0,30
Rear Legs-Side	>	-0,21
Rear Legs-Rear	>	0,77
Foot Angle	>	1,27
Feet & Legs Score	>	0,44
F. Udder Attachment	>	2,60
Rear Udder Height	>	2,67
Rear Udder Width	>	2,43
Udder Cleft	>	1,56
Udder Depth	>	2,44
Front Teat Placement	>	0,62
Rear Teat P. Rear	>	0,64
Teat Length	>	-0,09

INSEME

ELETTO

GIORDANO

Perseus x Rodanas

FLAGSHIP

Flagship Bomb Eliza
MB85

BOMBERO

Royal Bombeud
Mattarella MB89TPI
+2738NET MERIT \$
+682CHEESE MERIT \$
+708

► PRODUCTION TRAITS (81% REL)

Milk	% Fat	Fat	% Protein	Protein
-5 lbs	+0,25	+69	+0,11	+32
K Cas BB		Beta Lact AA		Beta Cas A1A2

► HEALTH TRAITS

SCS	2,61	SCE	2,00
PL	4,50	DCE	2,10
DPR	2,00	FI	2,00

Free Haplotypes
[i]-[i]-[i]-[i]

IT024990682547 - 543HO00261 - aAa 234

SEXED SEMEN *Made in Italy*
FOEMINA
Sexed **ULTRA**

► TYPE TRAITS

PTAT **+0,84** UDC **+1,70** FLC **-0,25**

Stature	>	0,55
Strength	>	0,35
Body Dept	>	0,16
Dairy Form	>	0,19
Rump Angle	>	-1,01
Thurl Width	>	1,16
Rear Legs-Side	>	-1,51
Rear Legs-Rear	>	-0,12
Foot Angle	>	1,19
Feet & Legs Score	>	-0,14
F. Udder Attachment	>	1,41
Rear Udder Height	>	2,02
Rear Udder Width	>	1,82
Udder Cleft	>	1,75
Udder Depth	>	1,60
Front Teat Placement	>	1,17
Rear Teat P. Rear	>	1,56
Teat Length	>	0,25

SABBIONA **EMERITO**

IT098990684345 - 543HO00221 - aAa 243615



MONTOYA **JEDI** **ROBUST**
 Moreno x Supersire x Cnn Jedi Shaddow MB89 x Miss Amerika MB85

TPI +2623 **NET MERIT \$** +650 **CHEESE MERIT \$** +660

► **PRODUCTION TRAITS (81% REL)**

Milk	% Fat	Fat	% Protein	Protein
+1831 lbs	-0,05	+54	+0,03	+67
K Cas AE		Beta Lact AB		Beta Cas A1A2

► **HEALTH TRAITS**

SCS	+2,82	SCE	+2,40
PL	+3,60	DCE	+2,20
DPR	-2,20	FI	-1,50



► **TYPE TRAITS**

PTAT	+1,21	UDC	+0,86	FLC	-0,71
------	--------------	-----	--------------	-----	--------------

Stature					2,27
Strength					1,34
Body Dept					1,29
Dairy Form					1,25
Rump Angle					2,49
Thurl Width					1,10
Rear Legs-Side					-0,22
Rear Legs-Rear					-0,59
Foot Angle					0,32
Feet & Legs Score					-0,09
F. Udder Attachment					1,11
Rear Udder Height					1,74
Rear Udder Width					1,53
Udder Cleft					0,66
Udder Depth					1,05
Front Teat Placement					0,67
Rear Teat P. Rear					0,94
Teat Length					0,27



ISOLABELLA INSEME **ERIK P**

IT001991454452 - 543HO00303



HEART **HOTSPOT** **DUKE**
 Renegade x Frazzled Vogue Hotspot Emma-P Silverridge Duke Elsa-P MB87

TPI +2781 **NET MERIT \$** +670 **CHEESE MERIT \$** +689

► **PRODUCTION TRAITS (81% REL)**

Milk	% Fat	Fat	% Protein	Protein
+942 lbs	+0,14	+76	+0,09	+55
K Cas AB		Beta Lact AB		Beta Cas A1A1

► **HEALTH TRAITS**

SCS	+2,79	SCE	+2,70
PL	+2,40	DCE	+2,30
DPR	+0,70	FI	+1,00

► **TYPE TRAITS**

PTAT	+1,26	UDC	+1,13	FLC	+0,19
------	--------------	-----	--------------	-----	--------------

Stature					1,81
Strength					1,00
Body Dept					0,61
Dairy Form					0,51
Rump Angle					1,12
Thurl Width					0,92
Rear Legs-Side					-0,80
Rear Legs-Rear					0,56
Foot Angle					0,98
Feet & Legs Score					0,55
F. Udder Attachment					1,69
Rear Udder Height					1,91
Rear Udder Width					1,84
Udder Cleft					0,03
Udder Depth					1,65
Front Teat Placement					-0,08
Rear Teat P. Rear					0,07
Teat Length					0,96



GO-FARM
INSEME

FABIUS

IT019992239603 - 543HO00294 - aAa 243

SEXED SEMEN *Made in Italy*
FOEMINA
Sexed **ULTRA 4M**

Go-Farm Inseme Fabius

ZAZZLE

Marius x Topshot

LAWSON

Progenesis Flora 3902

FRAZZLED

Welcome Frazzled
FanfareTPI
+2893NET MERIT \$
+872CHEESE MERIT \$
+897

► PRODUCTION TRAITS (81% REL)

Milk	% Fat	Fat	% Protein	Protein
+508 lbs	+0,25	+92	+0,11	+47
K Cas BB		Beta Lact AA		Beta Cas A1A1

► HEALTH TRAITS

SCS	+2,64	SCE	+1,90
PL	+4,70	DCE	+1,70
DPR	-0,30	FI	+0,20



GDAM Fabius

► TYPE TRAITS

PTAT **+1,32** UDC **+1,41** FLC **+0,43**

Stature	1,24
Strength	0,31
Body Dept	0,00
Dairy Form	0,63
Rump Angle	0,15
Thurl Width	1,21
Rear Legs-Side	0,11
Rear Legs-Rear	0,28
Foot Angle	0,71
Feet & Legs Score	0,77
F. Udder Attachment	> 2,24
Rear Udder Height	> 1,73
Rear Udder Width	> 1,63
Udder Cleft	-0,16
Udder Depth	> 1,94
Front Teat Placement	0,82
Rear Teat P. Rear	0,08
Teat Length	-0,23

IDEVRA RYL
INSEME

GHIBERTI

IT019991894454 - 543HO00244 - aAa 234



Idevra Ryl Inseme Ghiberti

BRAMANTE

Sound System x
Hotrod

HOTLINE

Idevra Royal Granata
MB88

RODANAS

Idevra Royal Grinta
MB88TPI
+2689NET MERIT \$
+566CHEESE MERIT \$
+584

► PRODUCTION TRAITS (81% REL)

Milk	% Fat	Fat	% Protein	Protein
+588 lbs	+0,19	+76	+0,08	+41
K Cas AA		Beta Lact AB		Beta Cas A2A2

► HEALTH TRAITS

SCS	+2,75	SCE	+1,60
PL	+1,10	DCE	+2,00
DPR	-2,50	FI	-1,80

► TYPE TRAITS

PTAT **+2,16** UDC **+2,05** FLC **+1,12**

Stature	> 2,69
Strength	0,36
Body Dept	0,71
Dairy Form	> 1,65
Rump Angle	0,81
Thurl Width	0,80
Rear Legs-Side	-0,40
Rear Legs-Rear	> 1,55
Foot Angle	> 2,43
Feet & Legs Score	> 1,56
F. Udder Attachment	> 2,77
Rear Udder Height	> 2,50
Rear Udder Width	> 2,40
Udder Cleft	> 2,37
Udder Depth	> 3,05
Front Teat Placement	> 2,44
Rear Teat P. Rear	> 2,83
Teat Length	-1,70

Free Haplotypes
[i-][i-]

New

S.J.K.

HADRIAN Legend

NL000949971784 - TL - 643HO05255

SEXED SEMEN *Made in Italy*
FOEMINA
Sexed **ULTRA 4M**

CAPTAIN

Charl x Sabre

CHARL

SJK 0706 ET - G79

DELTA

A-L-H Delta
Helania-ET



S.J.K. Hadrian

TPI +3055	NET MERIT \$ +1124	CHEESE MERIT \$ +1130
----------------------------	-------------------------------------	--

► **PRODUCTION TRAITS** (81% REL)

Milk +1734 lbs	% Fat +0,20	Fat +127	% Protein +0,02	Protein +61
K Cas AB		Beta Lact AA		Beta Cas A2A2

► **HEALTH TRAITS**

SCS +2,94	SCE +1,70	PL +4,90	DCE +1,50	DPR -0,50	FI +0,70
---------------------	---------------------	--------------------	---------------------	---------------------	--------------------



Cookiecutter Mom Halo-ET

Free Haplotypes
i-|i-|i-|i-



► **TYPE TRAITS**

PTAT +0,93	UDC +1,11	FLC -0,02
----------------------	---------------------	---------------------

Stature	0,24
Strength	-1,01
Body Dept	-0,28
Dairy Form	> 2,22
Rump Angle	1,10
Thurl Width	0,88
Rear Legs-Side	1,44
Rear Legs-Rear	-0,51
Foot Angle	-1,19
Feet & Legs Score	0,34
F. Udder Attachment	0,74
Rear Udder Height	> 2,03
Rear Udder Width	> 2,00
Udder Cleft	0,51
Udder Depth	0,29
Front Teat Placement	0,15
Rear Teat P. Rear	0,38
Teat Length	-1,41

New

Polled

DG

HEREWARD P Legend

NL000634721254 - TL PC - 643HO05161

SEXED SEMEN *Made in Italy*
FOEMINA
Sexed **ULTRA 4M**

CAPTAIN

Charl x Sabre

CHARL

Gen Heidi ET

ANSWER-P

Wilder Hit ET - GP82



DG Hereward

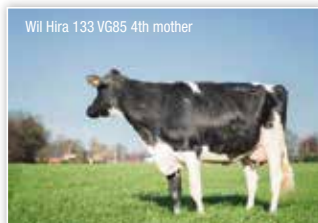
TPI +2968	NET MERIT \$ +917	CHEESE MERIT \$ +913
----------------------------	------------------------------------	---------------------------------------

► **PRODUCTION TRAITS** (81% REL)

Milk +2318 lbs	% Fat +0,06	Fat +107	% Protein -0,02	Protein +66
K Cas AB		Beta Lact AA		Beta Cas A2A2

► **HEALTH TRAITS**

SCS +3,08	SCE +1,70	PL +3,30	DCE +2,00	DPR -1,40	FI -0,20
---------------------	---------------------	--------------------	---------------------	---------------------	--------------------



Wil Hira 133 VG85 4th mother

Free Haplotypes
i-|i-|i-|i-



► **TYPE TRAITS**

PTAT +1,77	UDC +2,04	FLC +0,63
----------------------	---------------------	---------------------

Stature	0,22
Strength	-0,43
Body Dept	-0,15
Dairy Form	> 1,69
Rump Angle	0,36
Thurl Width	0,91
Rear Legs-Side	0,06
Rear Legs-Rear	0,26
Foot Angle	-0,37
Feet & Legs Score	0,81
F. Udder Attachment	> 1,72
Rear Udder Height	> 3,32
Rear Udder Width	> 3,06
Udder Cleft	0,62
Udder Depth	0,80
Front Teat Placement	-0,03
Rear Teat P. Rear	0,44
Teat Length	-0,89

New

DG

HORIZON Legend

NL000634724222 - TL - 643HO05542

SEXED SEMEN *Made in Italy*
FOEMINA
Sexed **ULTRA 4M**

CAPTAIN

Charl x Sabre

CHARL

DG Hailey ET

BOURBON

Peak Hang10
20528-ET

TPI
+3099

NET MERIT \$
+1078

CHEESE MERIT \$
+1092



► **PRODUCTION TRAITS** (81% REL)

Milk	% Fat	Fat	% Protein	Protein
+1473 lbs	+0,25	+131	+0,07	+67
K Cas AB		Beta Lact AA		Beta Cas A2A2

► **HEALTH TRAITS**

SCS	+2,91	SCE	+1,70
PL	+3,90	DCE	+2,00
DPR	+0,70	FI	+1,40

► **TYPE TRAITS**

PTAT **+0,90** UDC **+1,21** FLC **+0,44**

Stature				0,15
Strength				-0,28
Body Dept				-0,09
Dairy Form				1,14
Rump Angle				-0,71
Thurl Width				1,11
Rear Legs-Side				0,25
Rear Legs-Rear				0,58
Foot Angle				-0,58
Feet & Legs Score				0,47
F. Udder Attachment				1,39
Rear Udder Height				> 1,91
Rear Udder Width				> 1,81
Udder Cleft				-0,10
Udder Depth				0,45
Front Teat Placement				0,32
Rear Teat P. Rear				0,32
Teat Length				-0,78

Free **Haplotypes**
[i-][i-][i-]



RIOZZO
INSEME

INDRO

IT015990518306 - 543HO00245 - aAa 234

SEXED SEMEN *Made in Italy*
FOEMINA
Sexed **ULTRA 4M**

HOTHAND

Hotline x Montross

TOOHOT

Go-Farm Island

SUPERMAN

KNS Inka MB85

TPI
+2630

NET MERIT \$
+496

CHEESE MERIT \$
+505



► **PRODUCTION TRAITS** (81% REL)

Milk	% Fat	Fat	% Protein	Protein
+1403 lbs	+0,01	+57	+0,04	+56
K Cas AE		Beta Lact AB		Beta Cas A1A2

► **HEALTH TRAITS**

SCS	+2,96	SCE	+2,10
PL	+0,60	DCE	+2,40
DPR	-2,40	FI	-1,40

► **TYPE TRAITS**

PTAT **+1,96** UDC **+2,22** FLC **+0,23**

Stature				> 2,11
Strength				1,17
Body Dept				1,27
Dairy Form				> 1,62
Rump Angle				0,84
Thurl Width				1,17
Rear Legs-Side				-1,09
Rear Legs-Rear				1,13
Foot Angle				> 1,83
Feet & Legs Score				0,48
F. Udder Attachment				> 2,57
Rear Udder Height				> 3,01
Rear Udder Width				> 3,30
Udder Cleft				1,36
Udder Depth				> 2,10
Front Teat Placement				0,83
Rear Teat P. Rear				1,07
Teat Length				0,02



New

DG

JARMO

CAPTAIN

Charl x Sabre

REDROCK

PH Jezebel ET

KERRIGAN

Simple-Dreams PH
Ruw Cookie. ET-VG85

TPI
+2966

NET MERIT \$
+977

CHEESE MERIT \$
+993

► **PRODUCTION TRAITS** (81% REL)

Milk	% Fat	Fat	% Protein	Protein
+1265 lbs	+0,12	+83	+0,06	+57
K Cas AB		Beta Lact AA		Beta Cas A2A2

► **HEALTH TRAITS**

SCS	+2,74	SCE	+1,80
PL	+4,90	DCE	+1,90
DPR	+1,60	FI	+2,40



Free **Haplotypes**
[i-][i-][i-]



DE001406512971 - CF TL - 643HO05257

SEXED SEMEN *Made in Italy*
FOEMINA
Sexed **ULTRA 4M**



► **TYPE TRAITS**

PTAT **+0,81** UDC **+1,79** FLC **+0,49**

Stature				-0,70
Strength				-1,59
Body Dept				-1,42
Dairy Form				0,68
Rump Angle				0,15
Thurl Width				0,44
Rear Legs-Side				-1,05
Rear Legs-Rear				-0,03
Foot Angle				-0,04
Feet & Legs Score				0,46
F. Udder Attachment				1,43
Rear Udder Height				> 2,37
Rear Udder Width				> 2,08
Udder Cleft				0,56
Udder Depth				1,07
Front Teat Placement				0,39
Rear Teat P. Rear				0,45
Teat Length				-1,11

New

DG

JUNO

CAPTAIN

Charl x Sabre

TOPSTONE

DG R Jessie ET

REDROCK

PH Jezebel ET

TPI
+2902

NET MERIT \$
+935

CHEESE MERIT \$
+943

► **PRODUCTION TRAITS** (81% REL)

Milk	% Fat	Fat	% Protein	Protein
+1977 lbs	-0,01	+74	+0,02	+67
K Cas AB		Beta Lact AB		Beta Cas A2A2

► **HEALTH TRAITS**

SCS	+2,83	SCE	+1,50
PL	+4,90	DCE	+2,00
DPR	+0,00	FI	+0,50



Free **Haplotypes**
[i-][i-][i-]



DE001406446472 - CF TL - 643HO05261

SEXED SEMEN *Made in Italy*
FOEMINA
Sexed **ULTRA 4M**



► **TYPE TRAITS**

PTAT **+1,10** UDC **+1,39** FLC **+0,84**

Stature				0,19
Strength				-0,36
Body Dept				-0,10
Dairy Form				1,27
Rump Angle				-0,44
Thurl Width				0,62
Rear Legs-Side				-0,51
Rear Legs-Rear				0,49
Foot Angle				0,21
Feet & Legs Score				0,96
F. Udder Attachment				1,20
Rear Udder Height				> 2,12
Rear Udder Width				> 1,93
Udder Cleft				0,64
Udder Depth				0,82
Front Teat Placement				-0,23
Rear Teat P. Rear				-0,09
Teat Length				-0,22

PolledBAS FARM
INSEME**KING RED PR**

IT001991441926 - 543HO00292 - aAa 135

SEXED SEMEN *Made in Italy*
FOEMINA
Sexed **ULTRA 4M**

Bas Farm Inseme Red King PR ET

GIO P RF

Gywer x Lighter

X

GYWER

Weh 22611

X

KERRIGAN

Weh Jacky

TPI
+2754**NET MERIT \$**
+722**CHEESE MERIT \$**
+737**PRODUCTION TRAITS (79% REL)**

Milk	% Fat	Fat	% Protein	Protein
+1031 lbs	+0,05	+53	+0,05	+47
K Cas AA		Beta Lact AA		Beta Cas A2A2

HEALTH TRAITS

SCS	+2,71	SCE	+1,30
PL	+4,50	DCE	+2,00
DPR	+1,40	FI	+1,60

Free Haplotypes
[i-][i-][i-]**TYPE TRAITS**PTAT **+0,99** UDC **+1,27** FLC **+1,31**

Stature				0,12
Strength				-0,33
Body Dept				-0,55
Dairy Form				-0,28
Rump Angle				-0,11
Thurl Width				-0,41
Rear Legs-Side				-1,44
Rear Legs-Rear				1,54
Foot Angle				1,16
Feet & Legs Score				1,21
F. Udder Attachment				1,15
Rear Udder Height				1,78
Rear Udder Width				1,16
Udder Cleft				0,40
Udder Depth				1,41
Front Teat Placement				0,29
Rear Teat P. Rear				-0,03
Teat Length				-0,32

GEGANIA
INSEME**KYRIOS RC**

IT028990476890 - 543HO00272 - aAa 243

SEXED SEMEN *Made in Italy*
FOEMINA
Sexed **ULTRA 4M**

Gegania Inseme Kyrios

STRADIVARIDream x Sound
System

X

SPARK REDPrismagen Inseme
Red-Kiss B+83

X

BATTLECRY

WIL K26

TPI
+2634**NET MERIT \$**
+538**CHEESE MERIT \$**
+547**PRODUCTION TRAITS (79% REL)**

Milk	% Fat	Fat	% Protein	Protein
+1458 lbs	-0,12	+22	+0,00	+45
K Cas AB		Beta Lact AA		Beta Cas A1A2

HEALTH TRAITS

SCS	+2,61	SCE	+1,80
PL	+4,70	DCE	+1,70
DPR	+1,40	FI	+1,60



MGGDKYRIOS Wilder K26 Red

Free Haplotypes
[i-][i-][i-]**TYPE TRAITS**PTAT **+1,44** UDC **+1,35** FLC **+0,60**

Stature				2,42
Strength				0,66
Body Dept				0,21
Dairy Form				0,46
Rump Angle				0,48
Thurl Width				1,40
Rear Legs-Side				-0,71
Rear Legs-Rear				1,07
Foot Angle				2,04
Feet & Legs Score				1,01
F. Udder Attachment				2,09
Rear Udder Height				2,01
Rear Udder Width				1,50
Udder Cleft				0,39
Udder Depth				2,80
Front Teat Placement				-0,03
Rear Teat P. Rear				-0,10
Teat Length				0,38

New

DG

LAMBERT Legend

NL000634723027 - TL - 643HO05166



CAPTAIN

Charl x Sabre

CHARL

DG Legal ET - VG86

BLOWTORCH

Peak Lace-ET ET



TPI
+3088

NET MERIT \$
+1167

CHEESE MERIT \$
+1179

► **PRODUCTION TRAITS** (81% REL)

Milk	% Fat	Fat	% Protein	Protein
+1769 lbs	+0,18	+123	+0,04	+67
K Cas AB		Beta Lact AA		Beta Cas A2A2

► **HEALTH TRAITS**

SCS	+2,78	SCE	+1,50
PL	+5,40	DCE	+1,40
DPR	+0,40	FI	+1,10

► **TYPE TRAITS**

PTAT **+0,61** UDC **+0,94** FLC **-0,14**

Stature				0,03
Strength				-1,09
Body Dept				-0,39
Dairy Form				> 1,78
Rump Angle				0,56
Thurl Width				0,60
Rear Legs-Side				1,30
Rear Legs-Rear				-0,63
Foot Angle				-1,06
Feet & Legs Score				0,14
F. Udder Attachment				0,56
Rear Udder Height				> 1,87
Rear Udder Width				1,36
Udder Cleft				0,15
Udder Depth				0,32
Front Teat Placement				-0,16
Rear Teat P. Rear				0,03
Teat Length				-0,55

Free Haplotypes



New

DG

LANCE Legend

NL000634724587 - TL - 643HO05164

CAPTAIN

Charl x Sabre

CHARL

DG Legal ET - VG86

BLOWTORCH

Peak Lace-ET ET



TPI
+3062

NET MERIT \$
+1119

CHEESE MERIT \$
+1131

► **PRODUCTION TRAITS** (81% REL)

Milk	% Fat	Fat	% Protein	Protein
+1499 lbs	+0,25	+130	+0,04	+58
K Cas AA		Beta Lact AB		Beta Cas A2A2

► **HEALTH TRAITS**

SCS	+2,75	SCE	+1,90
PL	+5,10	DCE	+1,90
DPR	-0,60	FI	+0,10

► **TYPE TRAITS**

PTAT **+0,87** UDC **+1,35** FLC **+0,22**

Stature				-0,05
Strength				-0,91
Body Dept				-0,55
Dairy Form				1,18
Rump Angle				0,36
Thurl Width				0,71
Rear Legs-Side				0,33
Rear Legs-Rear				-0,10
Foot Angle				-0,64
Feet & Legs Score				0,35
F. Udder Attachment				1,27
Rear Udder Height				> 2,02
Rear Udder Width				> 1,74
Udder Cleft				0,13
Udder Depth				0,96
Front Teat Placement				0,28
Rear Teat P. Rear				0,15
Teat Length				-1,23

Free Haplotypes



BODENGO
INSEME

LILIUM

IT014990196057 - 543HO00305

SEXED SEMEN *made in Italy*
FOEMINA
Sexed **ULTRA 4M**

Bodengo Inseme Liliium

MACHONE × **NEBULA** × **JEDI**
 Milktime x Romero × C.M.E. Nebula Lexy ET MB85 × C.M.E. Jedi Zetajones

TPI
+2793

NET MERIT \$
+723

CHEESE MERIT \$
+741

► PRODUCTION TRAITS (80% REL)

Milk	% Fat	Fat	% Protein	Protein
+1411 lbs	+0,01	+58	+0,06	+61
K Cas AB		Beta Lact AA		Beta Cas A1A2

► HEALTH TRAITS

SCS	+2,62	SCE	+2,10
PL	+3,80	DCE	+2,00
DPR	-0,60	FI	-0,10

Free **Haplotypes**

► TYPE TRAITS

PTAT **+1,30** UDC **+1,81** FLC **+0,35**

Stature	0,42
Strength	0,40
Body Dept	0,18
Dairy Form	0,17
Rump Angle	0,44
Thurl Width	0,83
Rear Legs-Side	-1,25
Rear Legs-Rear	0,62
Foot Angle	0,71
Feet & Legs Score	0,38
F. Udder Attachment	> 1,52
Rear Udder Height	> 2,11
Rear Udder Width	> 2,41
Udder Cleft	> 1,94
Udder Depth	1,04
Front Teat Placement	1,33
Rear Teat P. Rear	> 1,90
Teat Length	0,06

-0,5 0 +0,5 +1 +1,5

AL.CO.BIA.
INSEME

LITIO

IT034991196866 - ET TL TM TV TY - 231



Al.Co.Bia. Inseme Litio ET

PANAMA × **CASPER** × **EAGLE**
 Pinnacle x Jedi × Al.Co.Bia. Casper Mania MB88 × Al.Co.Bia. Eagle Debbie MB89

TPI
+2515

NET MERIT \$
+398

CHEESE MERIT \$
+409

► PRODUCTION TRAITS (81% REL)

Milk	% Fat	Fat	% Protein	Protein
+685 lbs	-0,03	+19	+0,03	+29
K Cas BB		Beta Lact AB		Beta Cas A2A2

► HEALTH TRAITS

SCS	+2,67	SCE	+2,30
PL	+3,00	DCE	+2,70
DPR	-1,00	FI	-0,50

► TYPE TRAITS

PTAT **+2,18** UDC **+2,89** FLC **+0,81**

Stature	1,27
Strength	0,56
Body Dept	0,40
Dairy Form	0,73
Rump Angle	-0,70
Thurl Width	0,16
Rear Legs-Side	-0,53
Rear Legs-Rear	0,62
Foot Angle	1,27
Feet & Legs Score	1,12
F. Udder Attachment	> 3,75
Rear Udder Height	> 3,67
Rear Udder Width	> 2,87
Udder Cleft	1,07
Udder Depth	> 3,33
Front Teat Placement	1,47
Rear Teat P. Rear	0,90
Teat Length	-1,64

-0,5 0 +0,5 +1 +1,5



CIOLFARM
INSEME

LUDWIG

IT017992639133 - 543HO00304

SEXED SEMEN *Made in Italy*
FOEMINA
Sexed **ULTRA 4M**



Ciolfarm Inseme Ludwig

CAPONE

Renegade x Modesty

BRAMANTE

Ciolfarm Bramante
Soler MB85

BALISTO

Ciolfarm Balisto
Soleil EX90

TPI
+2783

NET MERIT \$
+799

CHEESE MERIT \$
+816

► PRODUCTION TRAITS (81% REL)

Milk	% Fat	Fat	% Protein	Protein
+1495 lbs	+0,01	+60	+0,06	+65
K Cas BB		Beta Lact AA		Beta Cas A2A2

► HEALTH TRAITS

SCS	+2,72	SCE	+1,80
PL	+4,80	DCE	+2,00
DPR	-1,20	FI	-0,40

► TYPE TRAITS

PTAT **+1,22** UDC **+0,89** FLC **+0,94**

Stature				1,08
Strength				0,10
Body Dept				0,44
Dairy Form				1,46
Rump Angle				-0,77
Thurl Width				-0,13
Rear Legs-Side				0,11
Rear Legs-Rear				1,19
Foot Angle				1,34
Feet & Legs Score				1,05
F. Udder Attachment				1,21
Rear Udder Height				1,78
Rear Udder Width				1,41
Udder Cleft				0,13
Udder Depth				1,20
Front Teat Placement				-0,26
Rear Teat P. Rear				-0,72
Teat Length				1,53

Free **Haplotypes**
i-i-i-i-i



ZANI
INSEME

MACCHIAVELLI

IT017992074001 - 543HO00223 - aAa 423

SEXED SEMEN *Made in Italy*
FOEMINA
Sexed **ULTRA 4M**



Zani Inseme Macchiavelli

NEBULA

Charley x Balisto

x

SILVER

Zani Silver Ambra
MB86

x

SUPERSIRE

Zani Supersire
Orietta MB87

TPI
+2537

NET MERIT \$
+586

CHEESE MERIT \$
+597

► PRODUCTION TRAITS (82% REL)

Milk	% Fat	Fat	% Protein	Protein
+1211 lbs	-0,01	+44	+0,04	+48
K Cas AB		Beta Lact AA		Beta Cas A2A2

► HEALTH TRAITS

SCS	+2,77	SCE	+1,50
PL	+3,30	DCE	+1,80
DPR	-0,40	FI	-0,20

► TYPE TRAITS

PTAT **+0,67** UDC **+0,52** FLC **+0,21**

Stature				0,62
Strength				0,26
Body Dept				0,24
Dairy Form				0,36
Rump Angle				0,14
Thurl Width				-0,40
Rear Legs-Side				0,36
Rear Legs-Rear				0,26
Foot Angle				0,43
Feet & Legs Score				0,35
F. Udder Attachment				0,84
Rear Udder Height				1,02
Rear Udder Width				0,71
Udder Cleft				0,07
Udder Depth				0,51
Front Teat Placement				0,24
Rear Teat P. Rear				-0,34
Teat Length				0,67

Free **Haplotypes**
i-i-i-i-i



Zani Silver Ambra

New

GEGANIA INSEME

MAITAI

IT028990497146 - ET TL TM TV TY - 543HO00311



Gegania Inseme Maitai

MAHOMES × **FREEMAX** × **GYMNAST**
 Eldorado x Milktime × NH Inseme Matilde ET - VG85 × NH Sunview Gym Mystery ET - VG85

TPI +2878	NET MERIT \$ +843	CHEESE MERIT \$ +856
----------------------------	------------------------------------	---------------------------------------

► **PRODUCTION TRAITS (78% REL)**

Milk +1051 lbs	% Fat +0,21	Fat +102	% Protein +0,07	Protein +54
K Cas BB		Beta Lact AA		Beta Cas A2A2

► **HEALTH TRAITS**

SCS	+2,93	SCE	+1,40
PL	+2,80	DCE	+1,60
DPR	-0,60	FI	+0,40

Free Haplotypes
[i-][i-][i-]



NH - HS Balisto Marilyn Monroe

► **TYPE TRAITS**

PTAT **+1,25** UDC **+1,51** FLC **+0,46**

Stature				0,56
Strength				0,25
Body Dept				0,25
Dairy Form				0,70
Rump Angle				-0,54
Thurl Width				0,75
Rear Legs-Side				0,36
Rear Legs-Rear				0,43
Foot Angle				0,63
Feet & Legs Score				0,58
F. Udder Attachment				> 1,79
Rear Udder Height				> 2,03
Rear Udder Width				> 2,01
Udder Cleft				0,38
Udder Depth				1,14
Front Teat Placement				0,38
Rear Teat P. Rear				0,11
Teat Length				-0,03

-0,5 0 +0,5 +1 +1,5

ISOLABELLA INSEME

MAKUMBA

IT001991424870 - 543HO00296



Isolabella Inseme Makumba

PLINKO × **DEREK** × **PERSEUS**
 Marius x Topshot × Isolabella Dogsitter ET GP81 × Isolabella Meghan ET

TPI +2821	NET MERIT \$ +835	CHEESE MERIT \$ +853
----------------------------	------------------------------------	---------------------------------------

► **PRODUCTION TRAITS (81% REL)**

Milk +1107 lbs	% Fat +0,18	Fat +94	% Protein +0,08	Protein +57
K Cas AB		Beta Lact AB		Beta Cas A2A2

► **HEALTH TRAITS**

SCS	+2,77	SCE	+1,60
PL	+3,70	DCE	+1,60
DPR	-0,50	FI	+0,10

Free Haplotypes
[i-][i-][i-]



► **TYPE TRAITS**

PTAT **+0,73** UDC **+0,67** FLC **+0,05**

Stature				0,41
Strength				-0,31
Body Dept				-0,24
Dairy Form				1,12
Rump Angle				-0,06
Thurl Width				0,49
Rear Legs-Side				-0,29
Rear Legs-Rear				-0,03
Foot Angle				0,18
Feet & Legs Score				0,18
F. Udder Attachment				0,38
Rear Udder Height				0,88
Rear Udder Width				1,34
Udder Cleft				0,68
Udder Depth				0,36
Front Teat Placement				-0,05
Rear Teat P. Rear				0,51
Teat Length				0,15

-0,5 0 +0,5 +1 +1,5

CIRIO AGRICOLA INSEME **MANFREDI**

IT061990879534 - 543HO00238 - aAa 243



Cirio Agricola Inseme Manfredi

PADAWAN x **BALISTO** x **DONATELLO**
 Jedi x Enforcer x G-Plus No Risk ET x Sandy-Valley No Problem-ET GP81

TPI +2619 **NET MERIT \$** +551 **CHEESE MERIT \$** +558

► **PRODUCTION TRAITS** (81% REL)

Milk	% Fat	Fat	% Protein	Protein
+1362 lbs	-0,13	+13	+0,01	+46
K Cas AB		Beta Lact AA		Beta Cas A2A2

► **HEALTH TRAITS**

SCS	+2,79	SCE	+1,80
PL	+4,40	DCE	+2,30
DPR	+2,30	FI	+2,70

► **TYPE TRAITS**

PTAT **+1,16** UDC **+1,95** FLC **+0,38**

Stature					-0,14
Strength					-0,45
Body Dept					-0,72
Dairy Form					0,26
Rump Angle					-0,78
Thurl Width					-0,26
Rear Legs-Side					-1,11
Rear Legs-Rear					0,54
Foot Angle					0,56
Feet & Legs Score					0,28
F. Udder Attachment					> 2,07
Rear Udder Height					> 2,20
Rear Udder Width					> 1,96
Udder Cleft					0,96
Udder Depth					> 1,68
Front Teat Placement					1,12
Rear Teat P. Rear					> 1,71
Teat Length					-0,98



CIRIO AGRICOLA INSEME **MANTRA**

IT061991006903 - 543HO00291 - aAa 432



Cirio Agricola Inseme Mantra

TRY ME x **YODA** x **Westcoast Dpik Chantal 4425**
 Resolve x Profit x Pine-Tree 4425Yoda 7994

TPI +2794 **NET MERIT \$** +811 **CHEESE MERIT \$** +832

► **PRODUCTION TRAITS** (82% REL)

Milk	% Fat	Fat	% Protein	Protein
+1069 lbs	+0,08	+65	+0,09	+60
K Cas BB		Beta Lact BB		Beta Cas A1A2

► **HEALTH TRAITS**

SCS	+2,74	SCE	+2,60
PL	+5,00	DCE	+2,30
DPR	-2,20	FI	-1,30

► **TYPE TRAITS**

PTAT **+1,89** UDC **+1,68** FLC **+0,45**

Stature					> 1,91
Strength					0,39
Body Dept					0,79
Dairy Form					> 1,74
Rump Angle					1,14
Thurl Width					0,16
Rear Legs-Side					-0,85
Rear Legs-Rear					0,62
Foot Angle					1,03
Feet & Legs Score					0,89
F. Udder Attachment					> 2,07
Rear Udder Height					> 2,45
Rear Udder Width					> 2,00
Udder Cleft					1,46
Udder Depth					> 1,88
Front Teat Placement					1,32
Rear Teat P. Rear					> 1,63
Teat Length					-0,60



DG

NORMAN Legend

NL000634724695 - 643H005172

 SEXED SEMEN *Made in Italy*
FOEMINA
 Sexed **ULTRA 4M**
CAPTAIN

Charl x Sabre

TOPSTONEHul-Stein DG Nellie
ET**MEDLEY**

DG HS Nathaly ET

TPI
+2985
NET MERIT \$
+1076
CHEESE MERIT \$
+1086


DG Norman

PRODUCTION TRAITS (80% REL)

Milk	% Fat	Fat	% Protein	Protein
+1574 lbs	+0,19	+117	+0,04	+60
K Cas AB		Beta Lact AA		Beta Cas A2A2

HEALTH TRAITS

SCS	+2,83	SCE	+1,40
PL	+4,40	DCE	+1,30
DPR	-0,50	FI	+0,10

TYPE TRAITS
PTAT +0,27 UDC +1,57 FLC +0,08

Stature	-0,99
Strength	-1,50
Body Dept	-1,63
Dairy Form	0,40
Rump Angle	0,54
Thurl Width	0,06
Rear Legs-Side	-0,03
Rear Legs-Rear	-0,39
Foot Angle	-0,98
Feet & Legs Score	0,00
F. Udder Attachment	1,18
Rear Udder Height	> 1,97
Rear Udder Width	> 2,02
Udder Cleft	0,60
Udder Depth	0,79
Front Teat Placement	0,09
Rear Teat P. Rear	0,52
Teat Length	-1,79

Free Haplotypes
**New**

DG

PAKUNO Legend

NL000634722411 - TL - 643H005162

 SEXED SEMEN *Made in Italy*
FOEMINA
 Sexed **ULTRA 4M**
CAPTAIN

Charl x Sabre

CHARL

DG Palenka ET

MODESTY

Peak Chorus-ET

TPI
+3105
NET MERIT \$
+1154
CHEESE MERIT \$
+1161


DG Pakuno

PRODUCTION TRAITS (81% REL)

Milk	% Fat	Fat	% Protein	Protein
+1501 lbs	+0,25	+131	+0,04	+58
K Cas AE		Beta Lact AA		Beta Cas A1A2

HEALTH TRAITS

SCS	+3,00	SCE	+1,60
PL	+4,60	DCE	+1,60
DPR	+0,80	FI	+1,50

TYPE TRAITS
PTAT +0,88 UDC +1,59 FLC +0,45

Stature	-0,59
Strength	-1,82
Body Dept	-0,97
Dairy Form	> 2,09
Rump Angle	0,58
Thurl Width	-0,08
Rear Legs-Side	1,41
Rear Legs-Rear	-0,26
Foot Angle	-1,20
Feet & Legs Score	0,61
F. Udder Attachment	0,74
Rear Udder Height	> 2,56
Rear Udder Width	> 2,25
Udder Cleft	0,89
Udder Depth	0,09
Front Teat Placement	1,06
Rear Teat P. Rear	1,30
Teat Length	-1,03

Free Haplotypes


Cookiecutter Sshot Honor-ET

New

DG

PALMA RC

NL000591604711 - TL TV TY RF RC - 643HO05259

SEXED SEMEN *Made in Italy*



DG Palma

CRISALIS

Gywer Rdc x Salvatore RC

CHARL

DG Pearly ET

JEDI

Pine-Tree 1684 Jedi 7138-ET

TPI

+2908

NET MERIT \$

+974

CHEESE MERIT \$

+992

► **PRODUCTION TRAITS (79% REL)**

Milk	% Fat	Fat	% Protein	Protein
+1615 lbs	+0,08	+86	+0,07	+70
K Cas AB		Beta Lact AA		Beta Cas A1A2

► **HEALTH TRAITS**

SCS	+2,69	SCE	+1,50
PL	+4,90	DCE	+1,80
DPR	+0,30	FI	+0,70



Niclo Supersire Fairie-ET

Free Haplotypes



► **TYPE TRAITS**

PTAT	+0,70	UDC	+0,50	FLC	-0,06
------	--------------	-----	--------------	-----	--------------

Stature					0,94
Strength					-0,08
Body Dept					0,04
Dairy Form					1,04
Rump Angle					-0,06
Thurl Width					0,58
Rear Legs-Side					-0,04
Rear Legs-Rear					-0,09
Foot Angle					0,36
Feet & Legs Score					0,19
F. Udder Attachment					0,55
Rear Udder Height					0,88
Rear Udder Width					0,89
Udder Cleft					0,50
Udder Depth					0,55
Front Teat Placement					0,55
Rear Teat P. Rear					0,43
Teat Length					-0,70

FRIGONI INSEME

PASOLINI

IT020991496723 - 543HO00257 - aAa 342

SEXED SEMEN *Made in Italy*



Frigoni Inseme Pasolini

PADAWAN

Jedi x Enforcer

GYMNAST

Frigoni Gymnast B+83

PENMANSHIP

Agrigen Royal Penmanship Tessa B+82

TPI

+2645

NET MERIT \$

+557

CHEESE MERIT \$

+570

► **PRODUCTION TRAITS (81% REL)**

Milk	% Fat	Fat	% Protein	Protein
+1506 lbs	-0,11	+24	+0,05	+62
K Cas AB		Beta Lact AA		Beta Cas A2A2

► **HEALTH TRAITS**

SCS	+2,79	SCE	+1,70
PL	+3,20	DCE	+1,70
DPR	+2,80	FI	+2,90



Frigoni Gymnast

► **TYPE TRAITS**

PTAT	+0,86	UDC	+0,99	FLC	-0,18
------	--------------	-----	--------------	-----	--------------

Stature					1,59
Strength					0,61
Body Dept					0,35
Dairy Form					0,63
Rump Angle					0,10
Thurl Width					0,89
Rear Legs-Side					-1,42
Rear Legs-Rear					0,33
Foot Angle					0,72
Feet & Legs Score					0,14
F. Udder Attachment					0,75
Rear Udder Height					1,37
Rear Udder Width					1,64
Udder Cleft					1,65
Udder Depth					1,14
Front Teat Placement					0,71
Rear Teat P. Rear					1,59
Teat Length					-0,13



AL.CO.BIA.
INSEME

PORTOFINO

KUDOS

Topnotch x Jedi

CASPER

Gioia Inseme
Edelweiss MB87

MODESTY

Holbra Malana
ET MB87TPI
+2765NET MERIT \$
+587CHEESE MERIT \$
+599

► PRODUCTION TRAITS (81% REL)

Milk	% Fat	Fat	% Protein	Protein
+1491 lbs	+0,00	+56	+0,05	+62
K Cas BB		Beta Lact AB		Beta Cas A1A2

► HEALTH TRAITS

SCS	+2,83	SCE	+2,20
PL	+1,90	DCE	+1,80
DPR	-1,40	FI	-0,90



Gioia Inseme Edelweiss ET - Dam of Portofino



IT034991251191 - 543HO0279 - aAa 234

SEXED SEMEN *Made in Italy*
FOEMINA
Sexed **ULTRA 4M**

Al.Co.Bia. Inseme Portofino

► TYPE TRAITS

PTAT **+2,42** UDC **+2,40** FLC **+0,47**

Stature	>	2,80
Strength	>	1,33
Body Dept	>	1,52
Dairy Form	>	1,71
Rump Angle	>	0,34
Thurl Width	>	1,24
Rear Legs-Side	>	0,41
Rear Legs-Rear	>	0,29
Foot Angle	>	1,63
Feet & Legs Score	>	1,20
F. Udder Attachment	>	3,20
Rear Udder Height	>	3,16
Rear Udder Width	>	2,80
Udder Cleft	>	2,37
Udder Depth	>	2,87
Front Teat Placement	>	1,32
Rear Teat P. Rear	>	1,98
Teat Length	>	0,04

-0,5 0 +0,5 +1 +1,5

New

ISOLABELLA
INSEME

PRINSTON

ZINGLER

Altazazzle
x Altarobert

SIGILLO

Al.Co.Bia. Inseme
Super ET-GP 84

CASPER

Gioia Inseme
Edelweiss ET-VG 87TPI
+2764NET MERIT \$
+743CHEESE MERIT \$
+762

► PRODUCTION TRAITS (78% REL)

Milk	% Fat	Fat	% Protein	Protein
+565 lbs	+0,10	+51	+0,08	+39
K Cas BB		Beta Lact AA		Beta Cas A1A2

► HEALTH TRAITS

SCS	+2,69	SCE	+1,90
PL	+6,20	DCE	+1,40
DPR	+2,80	FI	+3,00



Gioia Inseme Edelweiss ET

Free Haplotypes
|1-|1-|1-|1-|

IT001991528502 - ET TL TM TV TY - 643HO05544

SEXED SEMEN *Made in Italy*
FOEMINA
Sexed **ULTRA 4M**

Isolabella Inseme Prinстон

► TYPE TRAITS

PTAT **+0,84** UDC **+1,14** FLC **-0,23**

Stature	>	1,41
Strength	>	0,24
Body Dept	>	-0,39
Dairy Form	>	-0,72
Rump Angle	>	0,78
Thurl Width	>	0,51
Rear Legs-Side	>	-0,01
Rear Legs-Rear	>	-0,23
Foot Angle	>	0,35
Feet & Legs Score	>	0,16
F. Udder Attachment	>	2,15
Rear Udder Height	>	1,28
Rear Udder Width	>	0,66
Udder Cleft	>	0,11
Udder Depth	>	2,48
Front Teat Placement	>	0,12
Rear Teat P. Rear	>	0,32
Teat Length	>	-0,44

-0,5 0 +0,5 +1 +1,5

IDEVRA ROYAL

PUCCINI

IT019991816277 - 543HO00230 - aAa 234



Idevra Royal Puccini

PADAWAN

Jedi x Enforcer

X

OCTAVIAN

Idevra Royal Pepsi MB85

X

DOORMAN

Muri Doorman Trissy B+84

TPI

+2533

NET MERIT \$

+453

CHEESE MERIT \$

+469

► **PRODUCTION TRAITS** (82% REL)

Milk	% Fat	Fat	% Protein	Protein
+770 lbs	-0,01	+27	+0,07	+43
K Cas AB		Beta Lact AB		Beta Cas A2A2

► **HEALTH TRAITS**

SCS	+2,77	SCE	+2,30
PL	+3,20	DCE	+2,00
DPR	+1,20	FI	+1,70



Idevra Royal Pepsi ET VG85



► **TYPE TRAITS**

PTAT **+1,04** UDC **+0,94** FLC **+0,09**

Stature	1,42
Strength	1,20
Body Dept	0,93
Dairy Form	0,78
Rump Angle	-0,73
Thurl Width	1,41
Rear Legs-Side	-0,39
Rear Legs-Rear	0,43
Foot Angle	0,41
Feet & Legs Score	0,38
F. Udder Attachment	1,38
Rear Udder Height	1,17
Rear Udder Width	1,32
Udder Cleft	0,89
Udder Depth	1,28
Front Teat Placement	0,20
Rear Teat P. Rear	0,80
Teat Length	-0,47

ISOLABELLA INSEME

RITMO RC

IT001991322672 - 543HO00271 - aAa 243



Isolabella Inseme Ritmo RC

RONALD RF

Salvatore x Silver

X

ACHIEVER

Luis-Ooh Perrotta

X

DOORSOPEN

De Crob Rita 0077 B+82

TPI

+2605

NET MERIT \$

+564

CHEESE MERIT \$

+578

► **PRODUCTION TRAITS** (82% REL)

Milk	% Fat	Fat	% Protein	Protein
+696 lbs	+0,10	+56	+0,05	+37
K Cas BB		Beta Lact AB		Beta Cas A1A2

► **HEALTH TRAITS**

SCS	+2,77	SCE	+2,10
PL	+2,80	DCE	+2,80
DPR	-1,50	FI	-1,00

► **TYPE TRAITS**

PTAT **+1,46** UDC **+1,83** FLC **+0,48**

Stature	1,83
Strength	0,24
Body Dept	0,53
Dairy Form	1,11
Rump Angle	0,28
Thurl Width	1,01
Rear Legs-Side	-0,43
Rear Legs-Rear	0,97
Foot Angle	1,23
Feet & Legs Score	0,77
F. Udder Attachment	2,47
Rear Udder Height	2,37
Rear Udder Width	1,77
Udder Cleft	1,09
Udder Depth	2,54
Front Teat Placement	2,22
Rear Teat P. Rear	1,63
Teat Length	-1,13



IDEVRA
ROYAL INSEME

ROSSINI

IT019991894402 - 543HO00248 - aAa 234



Idevra Royal Inseme Rossini

HOTHAND

Hotline x Montroos

BANDARES

Inseme Aritmia B+83

RODANAS

Vermunt

TPI
+2607NET MERIT \$
+581CHEESE MERIT \$
+603

► PRODUCTION TRAITS (81% REL)

Milk	% Fat	Fat	% Protein	Protein
+817 lbs	+0,05	+45	+0,10	+53
K Cas AA		Beta Lact AA		Beta Cas A1A2

► HEALTH TRAITS

SCS	+2,69	SCE	+1,80
PL	+2,20	DCE	+2,10
DPR	-1,00	FI	-0,80

► TYPE TRAITS

PTAT **+1,39** UDC **+1,58** FLC **+0,28**

Stature	1,22
Strength	0,33
Body Dept	0,35
Dairy Form	1,25
Rump Angle	1,11
Thurl Width	-0,03
Rear Legs-Side	-0,52
Rear Legs-Rear	0,86
Foot Angle	1,12
Feet & Legs Score	0,39
F. Udder Attachment	> 1,87
Rear Udder Height	> 2,38
Rear Udder Width	> 2,24
Udder Cleft	0,65
Udder Depth	1,41
Front Teat Placement	0,22
Rear Teat P. Rear	-0,04
Teat Length	-0,19

SCOTTA
INSEME

SALUZZO

IT004992425480 - 543HO00300

SEXED SEMEN *Made in Italy*
FOEMINA
Sexed **ULTRA 4M**

Scotta Inseme Saluzzo

PLINKO

Marius x Topshot

DATELINE

Scotta Inseme Ceffs
ET MB86

SUPERSTAR

Zaqqa MB85

TPI
+2789NET MERIT \$
+875CHEESE MERIT \$
+899

► PRODUCTION TRAITS (81% REL)

Milk	% Fat	Fat	% Protein	Protein
+1284 lbs	+0,09	+77	+0,08	+64
K Cas AA		Beta Lact AB		Beta Cas A2A2

► HEALTH TRAITS

SCS	+2,53	SCE	+1,40
PL	+4,60	DCE	+1,30
DPR	+0,00	FI	+0,40



Zaqqa

► TYPE TRAITS

PTAT **+0,08** UDC **+0,16** FLC **-0,57**

Stature	0,64
Strength	-0,44
Body Dept	-0,20
Dairy Form	1,25
Rump Angle	> 1,75
Thurl Width	0,11
Rear Legs-Side	-0,87
Rear Legs-Rear	-0,60
Foot Angle	-0,30
Feet & Legs Score	-0,31
F. Udder Attachment	-0,13
Rear Udder Height	0,54
Rear Udder Width	0,81
Udder Cleft	0,33
Udder Depth	0,05
Front Teat Placement	-0,21
Rear Teat P. Rear	0,02
Teat Length	0,36

Free Haplotypes
[i-][i-][i-]

DG DV
INSEME
SANZIO

SANZIO

NL000621264063 - 543HO00232



DG DV Inseme Sanzio

CLASSIC x **JEDI** x **KINGBOY**
Charley x Silver x Montross x Supersire x McCutchen x Super

TPI
+2690

NET MERIT \$
+770

CHEESE MERIT \$
+784

► **PRODUCTION TRAITS (80% REL)**

Milk	% Fat	Fat	% Protein	Protein
+1194 lbs	+0,07	+66	+0,05	+52
K Cas AA		Beta Lact AA		Beta Cas A1A2

► **HEALTH TRAITS**

SCS	+2,75	SCE	+2,00
PL	+3,50	DCE	+2,30
DPR	-1,40	FI	-1,00

► **TYPE TRAITS**

PTAT **+0,77** UDC **+1,44** FLC **+0,37**

Stature				0,06
Strength				-0,80
Body Dept				-0,55
Dairy Form				0,74
Rump Angle				0,39
Thurl Width				-0,37
Rear Legs-Side				-1,45
Rear Legs-Rear				0,29
Foot Angle				0,87
Feet & Legs Score				0,40
F. Udder Attachment				1,08
Rear Udder Height				> 2,05
Rear Udder Width				> 1,56
Udder Cleft				1,44
Udder Depth				1,02
Front Teat Placement				0,91
Rear Teat P. Rear				> 1,70
Teat Length				-1,53

New

DG

SCORPIUS

NL000634724796 - TL - 643HO05171

SEXED SEMEN *Made in Italy*

FOEMINA
Sexed **ULTRA 4M**



DG Scorpius

PELLEGRINO x **CHARL** x **JEDI**
Topnotch x Router x DG DV Sika ET - GP83 x De Volmer Sabine ET

TPI
+2878

NET MERIT \$
+905

CHEESE MERIT \$
+920

► **PRODUCTION TRAITS (79% REL)**

Milk	% Fat	Fat	% Protein	Protein
+1088 lbs	+0,13	+81	+0,04	+44
K Cas AA		Beta Lact AA		Beta Cas A1A2

► **HEALTH TRAITS**

SCS	+2,59	SCE	+1,50
PL	+6,70	DCE	+0,90
DPR	+1,30	FI	+1,70



Ladys-Manor Ruby D Shawn-ET

► **TYPE TRAITS**

PTAT **+0,76** UDC **+1,29** FLC **-0,24**

Stature				0,76
Strength				0,06
Body Dept				-0,11
Dairy Form				0,10
Rump Angle				1,31
Thurl Width				-0,15
Rear Legs-Side				-0,56
Rear Legs-Rear				-0,51
Foot Angle				0,03
Feet & Legs Score				0,07
F. Udder Attachment				1,46
Rear Udder Height				> 1,66
Rear Udder Width				1,20
Udder Cleft				0,56
Udder Depth				> 1,83
Front Teat Placement				0,40
Rear Teat P. Rear				0,32
Teat Length				-0,41

GO-FARM

SILLA

IT019991792584 - 543HO00234 - aAa 234

SOUND SYSTEM

Silver x Supersire

FRANCHISE

Go-Farm Shanghai
MB87

SPEAKER

Go-Farm Saphira
B+84

TPI

+2599

NET MERIT \$

+572

CHEESE MERIT \$

+582



Go-Farm Silla

► PRODUCTION TRAITS (82% REL)

Milk	% Fat	Fat	% Protein	Protein
+851 lbs	+0,09	+59	+0,04	+39
K Cas BE		Beta Lact AA		Beta Cas A1A2

► HEALTH TRAITS

SCS	+2,89	SCE	+2,10
PL	+2,30	DCE	+1,90
DPR	-0,30	FI	+0,30

► TYPE TRAITS

PTAT **+1,13** UDC **+1,09** FLC **+0,29**

Stature	1,71
Strength	0,70
Body Dept	0,92
Dairy Form	1,09
Rump Angle	0,53
Thurl Width	0,66
Rear Legs-Side	0,05
Rear Legs-Rear	0,52
Foot Angle	1,17
Feet & Legs Score	0,62
F. Udder Attachment	1,54
Rear Udder Height	2,10
Rear Udder Width	1,42
Udder Cleft	0,44
Udder Depth	1,08
Front Teat Placement	0,45
Rear Teat P. Rear	0,44
Teat Length	0,19

-0,5 0 +0,5 +1 +1,5

ISOLABELLA
INSEME

SONIK

IT001991379357 - 543HO00289 - aAa 243

SEXED SEMEN *Made in Italy*
FOEMINA
Sexed **ULTRA 4M**

Isolabella Inseme Sonik

MACHONE

Milktime x Romero

SOUND SYSTEM

Baruf Inseme S.S.
Sunrise B+84

FONTAINE

Baruf Fontaine
Sunrise MB87TPI
+2695NET MERIT \$
+656CHEESE MERIT \$
+670

► PRODUCTION TRAITS (80% REL)

Milk	% Fat	Fat	% Protein	Protein
+1058 lbs	+0,11	+72	+0,07	+52
K Cas AB		Beta Lact AA		Beta Cas A2A2

► HEALTH TRAITS

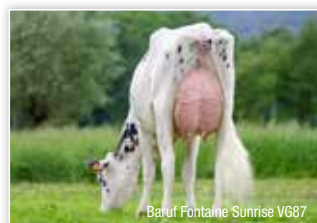
SCS	+2,85	SCE	+2,50
PL	+1,80	DCE	+2,50
DPR	-1,60	FI	-1,10

► TYPE TRAITS

PTAT **+1,76** UDC **+1,72** FLC **-0,08**

Stature	1,39
Strength	0,44
Body Dept	0,89
Dairy Form	2,23
Rump Angle	0,01
Thurl Width	1,29
Rear Legs-Side	0,63
Rear Legs-Rear	0,37
Foot Angle	0,29
Feet & Legs Score	0,19
F. Udder Attachment	1,72
Rear Udder Height	2,44
Rear Udder Width	2,47
Udder Cleft	1,44
Udder Depth	1,32
Front Teat Placement	1,33
Rear Teat P. Rear	1,48
Teat Length	-0,39

-0,5 0 +0,5 +1 +1,5

Free Haplotypes
i-1|1-1

Baruf Fontaine Sunrise VG87

New

NL000634722428 - TL - 643HO05163

SEXED SEMEN *Made in Italy*
FOEMINA
Sexed **ULTRA 4M**

DG

SEPTIMUS Legend



DG Septimus

CAPTAIN

Charl x Sabre

SUBZERO

Suami ET

DOC

Comestar Laumabia
Doc ET

TPI
+3120

NET MERIT \$
+1049

CHEESE MERIT \$
+1068

► **PRODUCTION TRAITS** (81% REL)

Milk +1053 lbs	% Fat +0,28	Fat +121	% Protein +0,11	Protein +64
K Cas AB		Beta Lact AA		Beta Cas A2A2

► **HEALTH TRAITS**

SCS +2,93	SCE +2,00	PL +4,40	DCE +1,70	DPR +0,20	FI +0,80
---------------------	---------------------	--------------------	---------------------	---------------------	--------------------

Free **Haplotypes**
[i-][i-][i-]



Suami

► **TYPE TRAITS**

PTAT **+1,86** UDC **+1,88** FLC **+0,99**

Stature	>	1,65
Strength		-0,08
Body Dept		0,22
Dairy Form	>	1,83
Rump Angle		1,28
Thurl Width		1,13
Rear Legs-Side		-0,14
Rear Legs-Rear		0,95
Foot Angle		0,59
Feet & Legs Score		1,40
F. Udder Attachment	>	1,91
Rear Udder Height	>	3,12
Rear Udder Width	>	2,42
Udder Cleft		0,67
Udder Depth	>	2,25
Front Teat Placement		-0,50
Rear Teat P. Rear		0,01
Teat Length		-0,37

-0,5 0 +0,5 +1 +1,5

MOLINADAIRY
INSEME

SPRINTER

IT098990800801 - 543HO00274 - aAa 243



Molinadairy Inseme Sprinter

SOLUTION

Frazzled x Rubicon

SOUND SYSTEM

Molinadairy
Macciaapua B+83

GAMBLER

Molinadairy Lella
MB86

TPI
+2533

NET MERIT \$
+590

CHEESE MERIT \$
+600

► **PRODUCTION TRAITS** (81% REL)

Milk +847 lbs	% Fat +0,04	Fat +44	% Protein +0,03	Protein +35
K Cas BB		Beta Lact AB		Beta Cas A2A2

► **HEALTH TRAITS**

SCS +2,76	SCE +2,40	PL +4,50	DCE +1,90	DPR -0,60	FI -0,10
---------------------	---------------------	--------------------	---------------------	---------------------	--------------------

Free **Haplotypes**
[i-][i-][i-]



► **TYPE TRAITS**

PTAT **+0,53** UDC **+1,14** FLC **-0,14**

Stature		0,63
Strength		-0,60
Body Dept		-1,18
Dairy Form		-0,62
Rump Angle	>	1,61
Thurl Width		0,25
Rear Legs-Side		0,13
Rear Legs-Rear		-0,63
Foot Angle		1,01
Feet & Legs Score		0,11
F. Udder Attachment	>	1,98
Rear Udder Height		0,97
Rear Udder Width		0,26
Udder Cleft		0,73
Udder Depth	>	2,23
Front Teat Placement	>	1,71
Rear Teat P. Rear	>	1,51
Teat Length		-1,68

-0,5 0 +0,5 +1 +1,5

ZANI INSEME

STRADIVARI

DREAM

Expresso x Montross

SOUND SYSTEM

Zani Soundsystem
Nora MB85

OCTAVIAN

Zani Octavian Noemy
MB88

TPI

+2617

NET MERIT \$

+488

CHEESE MERIT \$

+506

► PRODUCTION TRAITS (81% REL)

Milk	% Fat	Fat	% Protein	Protein
+766 lbs	+0,06	+46	+0,08	+48
K Cas BB		Beta Lact AA		Beta Cas A1A1

► HEALTH TRAITS

SCS	+2,80	SCE	+2,40
PL	+2,20	DCE	+2,30
DPR	+0,60	FI	+1,00



IT017992167089 - 543HO00237 - aAa 243165

SEXED SEMEN *Made in Italy*
FOEMINA
Sexed **ULTRA 4M**

Zani Inseme Stradivari

► TYPE TRAITS

PTAT **+1,27** UDC **+1,37** FLC **+0,13**

Stature				2,21
Strength				1,28
Body Dept				0,58
Dairy Form				0,02
Rump Angle				-0,13
Thurl Width				0,81
Rear Legs-Side				-0,98
Rear Legs-Rear				0,47
Foot Angle				2,05
Feet & Legs Score				0,55
F. Udder Attachment				2,35
Rear Udder Height				2,33
Rear Udder Width				1,49
Udder Cleft				0,08
Udder Depth				2,66
Front Teat Placement				-0,65
Rear Teat P. Rear				-0,83
Teat Length				0,75

-0,5 0 +0,5 +1 +1,5

MIRABELL
INSEME

SUPERFAST

MOTIVATED

Padawan x Duke

TOPNOTCH

Mirabell TPCH Story

MONTEREY

Mirabell MNTR Sulley
MB86

TPI

+2786

NET MERIT \$

+761

CHEESE MERIT \$

+780

► PRODUCTION TRAITS (81% REL)

Milk	% Fat	Fat	% Protein	Protein
+1408 lbs	+0,06	+72	+0,09	+69
K Cas BE		Beta Lact AB		Beta Cas A1A1

► HEALTH TRAITS

SCS	+2,78	SCE	+2,20
PL	+3,60	DCE	+2,40
DPR	-1,00	FI	-0,30

IT917992526791 - 543HO00287 - aAa 234



Mirabell Inseme Superfast

► TYPE TRAITS

PTAT **+1,35** UDC **+0,91** FLC **-0,15**

Stature				1,34
Strength				0,67
Body Dept				0,97
Dairy Form				1,82
Rump Angle				-0,82
Thurl Width				1,07
Rear Legs-Side				0,31
Rear Legs-Rear				-0,39
Foot Angle				0,23
Feet & Legs Score				0,30
F. Udder Attachment				0,88
Rear Udder Height				1,75
Rear Udder Width				1,98
Udder Cleft				0,83
Udder Depth				0,56
Front Teat Placement				-0,20
Rear Teat P. Rear				0,38
Teat Length				1,02

-0,5 0 +0,5 +1 +1,5

Legend **SUVAN** DG

NL000575219715 - 643H005160



DG Suvan

CAPTAIN x **CHARL** x **JEDI**
 Charl x Sabre x RGD Sunga ET x Sheola Jedi 6071-ET

TPI +3036 **NET MERIT \$** +1138 **CHEESE MERIT \$** +1150

► **PRODUCTION TRAITS** (81% REL)

Milk	% Fat	Fat	% Protein	Protein
+1326 lbs	+0,23	+117	+0,04	+53
K Cas AA		Beta Lact AA		Beta Cas A2A2

► **HEALTH TRAITS**

SCS	+2,76	SCE	+2,20
PL	+5,80	DCE	+2,20
DPR	+1,40	FI	+2,20

► **TYPE TRAITS**

PTAT **+0,48** UDC **+1,09** FLC **+0,31**

Stature				-0,90
Strength				-1,64
Body Dept				-1,27
Dairy Form				1,00
Rump Angle				0,47
Thurl Width				-0,26
Rear Legs-Side				0,04
Rear Legs-Rear				-0,25
Foot Angle				-1,15
Feet & Legs Score				0,28
F. Udder Attachment				0,59
Rear Udder Height				> 1,70
Rear Udder Width				1,33
Udder Cleft				0,41
Udder Depth				0,28
Front Teat Placement				0,29
Rear Teat P. Rear				0,61
Teat Length				-1,84

Free Haplotypes



SABBIONA INSEME **TANTUM**

IT098990744592 - 543HO00249 - aAa 234



Sabbiona Inseme Tantum

DISCJOCKEY x **APPLICABLE** x **MASCALESE**
 Fortune x Monterey x Sabbiona Tania EX92 x Go-Farm Tashira MB89

TPI +2245 **NET MERIT \$** +47 **CHEESE MERIT \$** +61

► **PRODUCTION TRAITS** (82% REL)

Milk	% Fat	Fat	% Protein	Protein
-386 lbs	+0,04	-3	+0,07	+7
K Cas AE		Beta Lact AA		Beta Cas A1A1

► **HEALTH TRAITS**

SCS	+2,87	SCE	+2,70
PL	+0,90	DCE	+2,40
DPR	+0,00	FI	+0,10

► **TYPE TRAITS**

PTAT **+1,85** UDC **+2,80** FLC **+0,41**

Stature				> 2,57
Strength				1,17
Body Dept				0,36
Dairy Form				-0,62
Rump Angle				0,45
Thurl Width				1,19
Rear Legs-Side				-2,28
Rear Legs-Rear				1,42
Foot Angle				> 2,80
Feet & Legs Score				0,77
F. Udder Attachment				> 3,90
Rear Udder Height				> 3,54
Rear Udder Width				> 1,99
Udder Cleft				> 1,85
Udder Depth				> 4,57
Front Teat Placement				0,79
Rear Teat P. Rear				0,99
Teat Length				-0,67



Sabbiona (Ciserani) Applicable (VP)

PISCHI
INSEME

TIALOCO

IT016990900821 - 543HO00295 - aAa 153

SEXED SEMEN *made in Italy*
FOEMINA
Sexed **ULTRA 4M**

Pischi Inseme Tialoco

MACHONE × **REDROCK** × **VANHALEN**
Milktime x Romero × Inseme Clara MB86 × Vanhalen MB87

TPI
+2711

NET MERIT \$
+692

CHEESE MERIT \$
+706

► PRODUCTION TRAITS (80% REL)

Milk	% Fat	Fat	% Protein	Protein
+1054 lbs	-0,04	+28	+0,02	+40
K Cas BB		Beta Lact AA		Beta Cas A1A2

► HEALTH TRAITS

SCS	+2,51	SCE	+1,70
PL	+6,00	DCE	+1,40
DPR	+1,90	FI	+1,90



Damm Inseme Clara

Free Haplotypes
[i-][i-][i-]

► TYPE TRAITS

PTAT **+1,58** UDC **+1,97** FLC **-0,08**

Stature				1,11
Strength				0,23
Body Dept				0,44
Dairy Form				1,11
Rump Angle				1,26
Thurl Width				0,34
Rear Legs-Side				-1,16
Rear Legs-Rear				-0,02
Foot Angle				0,67
Feet & Legs Score				0,22
F. Udder Attachment			>	2,40
Rear Udder Height			>	2,47
Rear Udder Width			>	2,28
Udder Cleft				1,21
Udder Depth			>	1,92
Front Teat Placement				1,11
Rear Teat P. Rear				0,34
Teat Length				0,06

-0,5 0 +0,5 +1 +1,5

SABBIONA
INSEME

TSUNAMI

IT098990806252 - 543HO00288



Sabbiona Inseme Tsunami

KONRAD × **DISCJOCKEY** × **APPLICABLE**
Hotjob x Jedi × Sabbiona Magic MB86 × Sabbiona Tania EX92

TPI
+2516

NET MERIT \$
+302

CHEESE MERIT \$
+322

► PRODUCTION TRAITS (79% REL)

Milk	% Fat	Fat	% Protein	Protein
-29 lbs	+0,10	+26	+0,10	+26
K Cas AB		Beta Lact AB		Beta Cas A1A1

► HEALTH TRAITS

SCS	+2,76	SCE	+2,30
PL	+2,50	DCE	+2,40
DPR	+0,20	FI	+0,60



Sabbiona (Ciserani) Applicable (VP)

► TYPE TRAITS

PTAT **+2,33** UDC **+2,69** FLC **+0,04**

Stature				3,01
Strength				1,81
Body Dept				1,16
Dairy Form				0,11
Rump Angle				-0,26
Thurl Width				1,33
Rear Legs-Side				-2,10
Rear Legs-Rear				0,85
Foot Angle				2,37
Feet & Legs Score				0,61
F. Udder Attachment			>	3,66
Rear Udder Height			>	3,63
Rear Udder Width			>	2,89
Udder Cleft				1,68
Udder Depth			>	3,84
Front Teat Placement				1,38
Rear Teat P. Rear				1,45
Teat Length				-0,89

-0,5 0 +0,5 +1 +1,5

Polled

IT098990790444 - 543HO00282 - aAa 423

SEXED SEMEN *Made in Italy*
FOEMINA
Sexed **ULTRA 4M**

DEL SANTO
INSEME

WALLY RED PR



SOLITAIR P × **ABI RED PP** × **IMPRESSION**
Mr Salvatore x Balisto × Del Santo Barletta MB88 × Del Santo Sailsa EX90

TPI +2628 **NET MERIT \$** +687 **CHEESE MERIT \$** +696

► **PRODUCTION TRAITS (81% REL)**

Milk	% Fat	Fat	% Protein	Protein
+925 lbs	+0,11	+68	+0,06	+45
K Cas BB		Beta Lact AA		Beta Cas A2A2

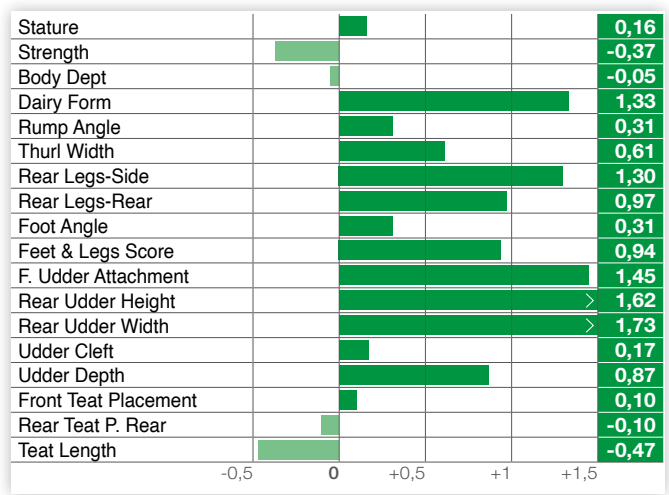
► **HEALTH TRAITS**

SCS	+3,01	SCE	+1,60
PL	+3,20	DCE	+2,00
DPR	-2,20	FI	-1,50

Free Haplotypes
[i-][i-][i-][i-]
A2A2 BETA CASEIN
BB K CASEIN

► **TYPE TRAITS**

PTAT **+1,06** UDC **+1,23** FLC **+0,91**



DELLAROSSA
INSEME

WODOO

IT004992267916 - 543HO00299 - aAa 234



ZAZZLE × **ACHIEVER** × **DELTA**
Marius x Topshot × Juniper-Jlc Achievr Wish-ET × Ttm Delta Wonder Woman-ET MB88

TPI +2806 **NET MERIT \$** +837 **CHEESE MERIT \$** +847

► **PRODUCTION TRAITS (81% REL)**

Milk	% Fat	Fat	% Protein	Protein
+1053 lbs	+0,23	+106	+0,05	+46
K Cas BE		Beta Lact AB		Beta Cas A1A1

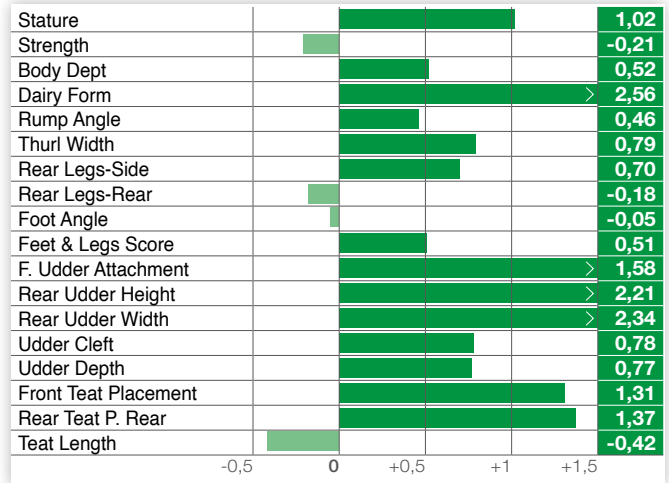
► **HEALTH TRAITS**

SCS	+2,86	SCE	+1,80
PL	+2,00	DCE	+1,80
DPR	-2,50	FI	-1,80

Free Haplotypes
[i-][i-][i-][i-]

► **TYPE TRAITS**

PTAT **+1,54** UDC **+1,50** FLC **+0,11**



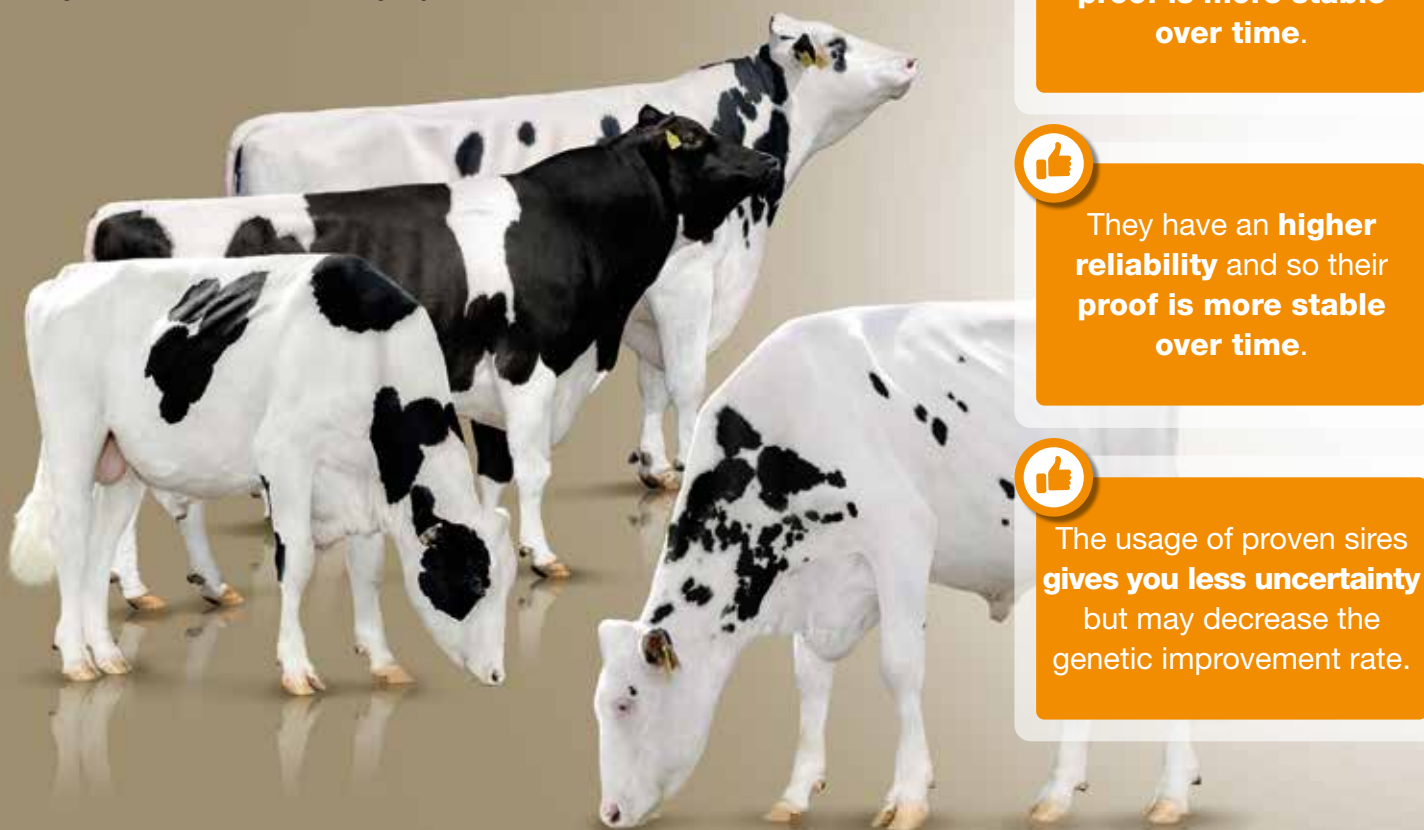
GTPI PROVEN TOP 10

Naab Code	Name	Beta Casein	Kappa Casein	Sire	Mgs	GPFT	TPI	Net Merit	PTA Milk	PTA Fat	% Fat	PTA Pro	% Pro	SCS	PL	PTA DPR	SCE	PTA Type	UDC	FLC
543H000216	BERNINI	A2A2		GUARANTEE	HOTROD	4344	2711	744	534	61	0,14	29	0,04	2,56	5,30	-0,10	2,10	1,14	1,93	0,30
543H000208	RUBESCO	A2A2		IMAX	JEDI	3854	2688	635	1875	64	-0,03	67	0,03	3,04	2,00	-2,80	1,90	1,59	1,77	0,15
543H000163	LIVER	A2A2	BB	SUPERHERO	MISSOURI	4151	2651	644	1434	43	-0,04	47	0,01	2,63	3,60	1,70	2,20	0,78	1,21	-0,19
543H000193	LEONFORTE			IMAX	HOTROD	4323	2633	645	1316	73	0,08	49	0,03	2,95	1,50	-3,00	2,30	1,59	1,63	0,40
543H000194	EDUARDO	A2A2		PERSEUS	BATTLECRY	4113	2627	571	1007	38	0,00	33	0,01	2,57	4,60	2,90	1,90	1,07	1,24	-0,38
543H000199	GIORDANO			PERSEUS	RODANAS	4321	2624	603	526	75	0,19	39	0,08	2,6	2,90	-0,50	2,20	0,96	0,97	-0,17
543H000192	SORRENTO	A2A2		HOTLINE	BATTLECRY	4216	2614	511	489	80	0,21	39	0,08	2,7	-0,40	-2,50	2,00	1,50	1,51	1,23
543H000086	SOUND SYSTEM			SILVER	SUPERSIRE	3768	2603	536	1228	80	0,11	45	0,02	2,99	0,80	-1,70	3,00	1,60	1,18	-0,26
543H000209	HABITUS			PHARO	SILVER	3969	2586	502	968	51	0,05	40	0,03	2,9	2,50	-1,40	2,00	2,27	2,21	0,45
543H000166	MUNARI			HOTLINE	DOZER	4219	2561	385	572	55	0,12	40	0,08	3,01	-1,30	-2,20	2,20	1,75	2,06	2,36

USDA 08/2023

Proven Sires

Proven sires are those with minimum 30 daughters effective **productive, reproductive, conformation and functional performances** have been measured in at least 30 herds having at least 120 dim. **They have a minimum reliability equal to 80%.**



They have an **higher reliability** and so their **proof is more stable over time.**



They have an **higher reliability** and so their **proof is more stable over time.**



The usage of proven sires **gives you less uncertainty** but may decrease the genetic improvement rate.

K&L RM
INSEME

BARONE ROSSO R

NL000627599682 - 543HO00219 - aAa 342



SANTORIUS

BREAKER

BREKEM

Jedi x Kingboy

K&L RM Soraya

Saga



K&L RM Inseme Barone Rosso

TPI
+2547

NET MERIT \$
+444

CHEESE MERIT \$
+457

► **PRODUCTION TRAITS** based on 68 daughters in 44 herds (83% REL)

Milk +1099 lbs	% Fat +0,03	Fat +50	% Protein +0,06	Protein +53
K Cas BB		Beta Lact AA		Beta Cas A1A2

► **HEALTH TRAITS**

SCS +2,91	SCE +2,10	PL +1,10	DCE +2,70	DPR -1,40	FI -0,90
---------------------	---------------------	--------------------	---------------------	---------------------	--------------------



Pradazzo Rosy Red

Free Haplotypes
[i-][i-][i-]



► **TYPE TRAITS** based on 23 daughters in 17 herds (78% REL)

PTAT +1,56 **UDC +1,62** **FLC +0,29**

Stature	0,98
Strength	0,71
Body Dept	0,42
Dairy Form	0,24
Rump Angle	-1,45
Thurl Width	0,57
Rear Legs-Side	-0,63
Rear Legs-Rear	0,60
Foot Angle	1,20
Feet & Legs Score	0,41
F. Udder Attachment	> 2,58
Rear Udder Height	> 2,16
Rear Udder Width	> 1,82
Udder Cleft	0,62
Udder Depth	> 1,97
Front Teat Placement	-0,26
Rear Teat P. Rear	-0,44
Teat Length	1,37

-0,5 0 +0,5 +1 +1,5

GO-FARM

BERNINI

IT019991728770 - 543HO00216 - aAa 234

GUARANTEE

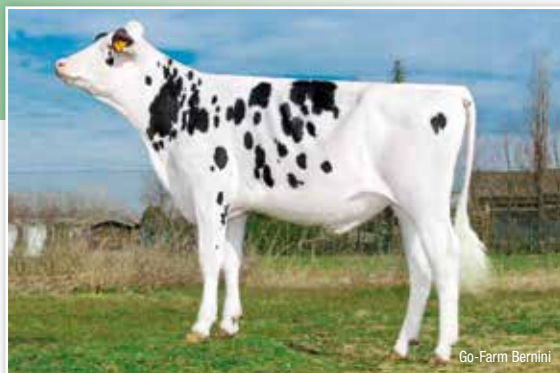
HOTROD

MCCUTCHEN

Boastful x Tango

Go-Farm-Bomba
ET MB85

Go-Farm Brashine
EX91



Go-Farm Bernini

TPI
+2711

NET MERIT \$
+744

CHEESE MERIT \$
+760

► **PRODUCTION TRAITS** based on 228 daughters in 87 herds (94% REL)

Milk +534 lbs	% Fat +0,14	Fat +61	% Protein +0,04	Protein +29
K Cas AA		Beta Lact AB		Beta Cas A2A2

► **HEALTH TRAITS**

SCS +2,56	SCE +2,10	PL +5,30	DCE +1,80	DPR -0,10	FI +0,30
---------------------	---------------------	--------------------	---------------------	---------------------	--------------------

► **TYPE TRAITS** based on 123 daughters in 46 herds (89% REL)

PTAT +1,14 **UDC +1,93** **FLC +0,30**

Stature	0,76
Strength	-1,03
Body Dept	-0,98
Dairy Form	0,63
Rump Angle	-0,84
Thurl Width	0,66
Rear Legs-Side	0,58
Rear Legs-Rear	0,19
Foot Angle	0,64
Feet & Legs Score	0,51
F. Udder Attachment	> 2,53
Rear Udder Height	> 1,99
Rear Udder Width	> 1,67
Udder Cleft	1,36
Udder Depth	> 2,78
Front Teat Placement	0,76
Rear Teat P. Rear	0,50
Teat Length	-1,44

-0,5 0 +0,5 +1 +1,5



ISOLABELLA
BRIATORE

BRIATORE

IT001991129517 - 543HO00214 - aAa 213

SEXED SEMEN *Made in Italy*
FOEMINA
Sexed **ULTRA 4M**

Isolabella Briatore

ARGO

Silver x Supersire

HOTRODIsolabella Royal
Bomby ET EX90**DOORMAN**Brill Royal Doorman
Blondie GP81**TPI****+2373****NET MERIT \$****+184****CHEESE MERIT \$****+188**► **PRODUCTION TRAITS** based on 106 daughters in 53 herds (98% REL)

Milk	% Fat	Fat	% Protein	Protein
+752 lbs	-0,03	+21	+0,01	+27
K Cas AB		Beta Lact AA		Beta Cas A1A2

► **HEALTH TRAITS**

SCS	+2,91	SCE	+2,50
PL	+0,50	DCE	+2,50
DPR	-0,80	FI	-0,40

► **TYPE TRAITS** based on 106 daughters in 53 herds (95% REL)PTAT **+2,36** UDC **+2,09** FLC **+0,72**

Stature	>	3,99
Strength	>	1,35
Body Dept	>	1,58
Dairy Form	>	1,85
Rump Angle	>	1,50
Thurl Width	>	2,43
Rear Legs-Side	<	-0,30
Rear Legs-Rear	>	1,61
Foot Angle	>	2,35
Feet & Legs Score	>	1,42
F. Udder Attachment	>	3,01
Rear Udder Height	>	3,12
Rear Udder Width	>	2,92
Udder Cleft	>	1,72
Udder Depth	>	3,42
Front Teat Placement	>	1,51
Rear Teat P. Rear	>	1,33
Teat Length	<	-1,42

-0,5 0 +0,5 +1 +1,5

CIRIO AGR.
EQUITY GAP

EDUARDO

IT061990821887 - 543HO00194 - aAa 234



Cirio Agr. Equity Gap Eduardo

PERSEUSPenmanship
x Doorman**BATTLECRY**Cirio Agricola Ermione
GP84**CASHMONEY**Cirio Agricola Elettra
MB88 EXMS**TPI**
+2627**NET MERIT \$**
+571**CHEESE MERIT \$**
+582► **PRODUCTION TRAITS** based on 1262 daughters in 288 herds (98% REL)

Milk	% Fat	Fat	% Protein	Protein
+1007 lbs	+0,00	+38	+0,01	+33
K Cas AA		Beta Lact AA		Beta Cas A2A2

► **HEALTH TRAITS**

SCS	+2,57	SCE	+1,90
PL	+4,60	DCE	+2,00
DPR	+2,90	FI	+2,90

► **TYPE TRAITS** based on 555 daughters in 138 herds (95% REL)PTAT **+1,07** UDC **+1,24** FLC **-0,38**

Stature	>	1,21
Strength	>	0,25
Body Dept	>	0,16
Dairy Form	>	0,39
Rump Angle	>	0,45
Thurl Width	>	-0,03
Rear Legs-Side	<	-1,08
Rear Legs-Rear	<	-0,38
Foot Angle	>	1,28
Feet & Legs Score	>	-0,07
F. Udder Attachment	>	1,79
Rear Udder Height	>	0,90
Rear Udder Width	>	1,12
Udder Cleft	>	1,23
Udder Depth	>	2,19
Front Teat Placement	>	0,86
Rear Teat P. Rear	>	0,66
Teat Length	>	0,05

-0,5 0 +0,5 +1 +1,5



PESS FARM
PERSEUS

FALETTI

IT004991763908 - 543HO00197 - aAa 243



PERSEUS

Penmanship x
Doorman

MARDI GRAS

Pess Farm Mardi Gras
Umina EX90

EUDON

Pess Farm Eudon
Spagnola B+84



Pess Farm Perseus Faletti

TPI +2451	NET MERIT \$ +429	CHEESE MERIT \$ +439
----------------------------	------------------------------------	---------------------------------------

PRODUCTION TRAITS based on 1237 daughters in 536 herds (99% REL)

Milk +508 lbs	% Fat +0,05	Fat +34	% Protein +0,06	Protein +33
K Cas AB		Beta Lact AA		Beta Cas A2A2

HEALTH TRAITS

SCS	+2,99	SCE	+1,50
PL	+2,00	DCE	+1,50
DPR	+2,00	FI	+2,10



Pess Farm Faletti Dalia

Free Haplotypes



TYPE TRAITS based on 1237 daughters in 536 herds (97% REL)

PTAT **+0,45** UDC **+0,87** FLC **-0,14**

Stature					0,05
Strength					-0,12
Body Dept					-0,59
Dairy Form					-0,60
Rump Angle					0,77
Thurl Width					-0,03
Rear Legs-Side					-2,43
Rear Legs-Rear					-0,19
Foot Angle					1,83
Feet & Legs Score					-0,10
F. Udder Attachment					1,37
Rear Udder Height					0,50
Rear Udder Width					0,32
Udder Cleft					0,69
Udder Depth					1,55
Front Teat Placement					0,56
Rear Teat P. Rear					0,39
Teat Length					-0,84

IDEVRA
ROYAL

GIORDANO

IT019991621646 - 543HO00199 - aAa 135

PERSEUS

Penmanship
x Doorman

RODANAS

Idevra Royal Grinta
MB88

AGENCY

Gal-Farm Goga



Idevra Royal Giordano

TPI +2624	NET MERIT \$ +603	CHEESE MERIT \$ +624
----------------------------	------------------------------------	---------------------------------------

PRODUCTION TRAITS based on 1870 daughters in 496 herds (99% REL)

Milk +526 lbs	% Fat +0,19	Fat +75	% Protein +0,08	Protein +39
K Cas AB		Beta Lact AA		Beta Cas A1A2

HEALTH TRAITS

SCS	+2,60	SCE	+2,20
PL	+2,90	DCE	+2,20
DPR	-0,50	FI	-0,40



Pessa Farm Giordano Comesa

TYPE TRAITS based on 1107 daughters in 312 herds (97% REL)

PTAT **+0,96** UDC **+0,97** FLC **-0,17**

Stature					1,68
Strength					0,88
Body Dept					1,00
Dairy Form					1,05
Rump Angle					-0,73
Thurl Width					1,48
Rear Legs-Side					0,10
Rear Legs-Rear					0,03
Foot Angle					1,20
Feet & Legs Score					0,18
F. Udder Attachment					0,93
Rear Udder Height					0,96
Rear Udder Width					1,20
Udder Cleft					2,10
Udder Depth					1,55
Front Teat Placement					1,92
Rear Teat P. Rear					2,16
Teat Length					-0,42

A-L-H

HABITUS

NI000562148420 - 543HO00209



A-L-H Habitus

PHARO

Jedi x Balisto

X

SILVER

A-L-H Havanna

X

SUPERSIRE

Cookiecutter Ssire
Have MB86

TPI
+2586

NET MERIT \$
+502

CHEESE MERIT \$
+510

► **PRODUCTION TRAITS** based on 765 daughters in 205 herds (97% REL)

Milk	% Fat	Fat	% Protein	Protein
+968 lbs	+0,05	+51	+0,03	+40
K Cas BE		Beta Lact AB		Beta Cas A1A2

► **HEALTH TRAITS**

SCS	+2,90	SCE	+2,00
PL	+2,50	DCE	+2,00
DPR	-1,40	FI	-1,20

► **TYPE TRAITS** based on 337 daughters in 87 herds (94% REL)

PTAT **+2,27** UDC **+2,21** FLC **+0,45**

Stature	>	2,67
Strength	>	0,56
Body Dept	>	1,06
Dairy Form	>	2,02
Rump Angle	>	0,23
Thurl Width	>	0,75
Rear Legs-Side	>	0,25
Rear Legs-Rear	>	0,89
Foot Angle	>	1,68
Feet & Legs Score	>	0,96
F. Udder Attachment	>	3,00
Rear Udder Height	>	3,10
Rear Udder Width	>	2,67
Udder Cleft	>	1,81
Udder Depth	>	2,72
Front Teat Placement	>	1,86
Rear Teat P. Rear	>	2,08
Teat Length	<	-1,19

GANDY

LEONFORTE

IT020991342290 - TL TM TV TY



Gandy Leonforte

IMAX

Altaspring x Mogul

X

HOTROD

Gandy Soraya ET
VG85

MCCUTCHEN

Gandy Ludmilla GMV
GP83

TPI
+2633

NET MERIT \$
+645

CHEESE MERIT \$
+651

► **PRODUCTION TRAITS** based on 83 daughters in 41 herds (89% REL)

Milk	% Fat	Fat	% Protein	Protein
+1316 lbs	+0,08	+73	+0,03	+49
K Cas AA		Beta Lact AA		Beta Cas A1A2

► **HEALTH TRAITS**

SCS	+2,95	SCE	+2,30
PL	+1,50	DCE	+2,70
DPR	-3,00	FI	-2,10



Gandy Ludmilla - Dam of Monteverdi and Moondance

► **TYPE TRAITS** based on 42 daughters in 17 herds (83% REL)

PTAT **+1,59** UDC **+1,63** FLC **+0,40**

Stature	>	2,67
Strength	>	1,08
Body Dept	>	1,16
Dairy Form	>	1,61
Rump Angle	>	1,60
Thurl Width	>	2,28
Rear Legs-Side	>	0,16
Rear Legs-Rear	>	1,30
Foot Angle	>	1,20
Feet & Legs Score	>	0,81
F. Udder Attachment	>	2,09
Rear Udder Height	>	2,08
Rear Udder Width	>	2,26
Udder Cleft	>	2,15
Udder Depth	>	2,51
Front Teat Placement	>	1,81
Rear Teat P. Rear	>	2,36
Teat Length	<	-1,47

PRISMAGEN **LIVER**

DE000360385506 - 543HO00163 - aAa 234

SEXED SEMEN *Made in Italy*
FOEMINA
Sexed **ULTRA**



Prismagen Liver

SUPERHERO x **MISSOURI** x **NUMERO UNO**
Supershot x Numero Uno x Pg Ladylike MB86 x Hlm Lane MB85

TPI +2651 **NET MERIT \$** +644 **CHEESE MERIT \$** +653

► **PRODUCTION TRAITS** based on 1265 daughters in 317 herds (98% REL)

Milk	% Fat	Fat	% Protein	Protein
+1434 lbs	-0,04	+43	+0,01	+47
K Cas BB		Beta Lact AB		Beta Cas A2A2

► **HEALTH TRAITS**

SCS	+2,63	SCE	+2,20
PL	+3,60	DCE	+2,10
DPR	+1,70	FI	+1,60

Free **Haplotypes**
[i-][i-][i-]



Gasperi Liver

► **TYPE TRAITS** based on 720 daughters in 217 herds (96% REL)

PTAT **+0,78** UDC **+1,21** FLC **-0,19**

Stature					-0,01
Strength					-0,55
Body Dept					-0,54
Dairy Form					0,24
Rump Angle					-1,99
Thurl Width					0,97
Rear Legs-Side					1,45
Rear Legs-Rear					-0,98
Foot Angle					-0,56
Feet & Legs Score					0,14
F. Udder Attachment					> 2,24
Rear Udder Height					1,34
Rear Udder Width					1,12
Udder Cleft					-0,02
Udder Depth					1,38
Front Teat Placement					-0,83
Rear Teat P. Rear					-0,61
Teat Length					0,97

GARIONI SOUND **MARZEMINO**

IT019991673056 - 543HO00157 - aAa 231

SEXED SEMEN *Made in Italy*
FOEMINA
Sexed **ULTRA**



Garioni Sound Marzemino

SOUND SYSTEM x **KINGBOY** x **FREDDIE**
Silver x Supersire x Garioni Royal KB Maelyn ET MB87 x Morningview Freddie Mimi EX90

TPI +2554 **NET MERIT \$** +464 **CHEESE MERIT \$** +470

► **PRODUCTION TRAITS** based on 650 daughters in 205 herds (97% REL)

Milk	% Fat	Fat	% Protein	Protein
+821 lbs	+0,10	+61	+0,02	+32
K Cas AB		Beta Lact AA		Beta Cas A1A2

► **HEALTH TRAITS**

SCS	+2,86	SCE	+2,50
PL	+1,60	DCE	+2,30
DPR	+0,90	FI	+1,30

Casa Bianca Marzemino Nicanora B+82



► **TYPE TRAITS** based on 360 daughters in 143 herds (94% REL)

PTAT **+1,22** UDC **+1,22** FLC **-0,42**

Stature					> 1,66
Strength					0,93
Body Dept					0,94
Dairy Form					0,98
Rump Angle					-0,04
Thurl Width					> 1,51
Rear Legs-Side					1,24
Rear Legs-Rear					-0,19
Foot Angle					0,76
Feet & Legs Score					-0,01
F. Udder Attachment					1,36
Rear Udder Height					> 2,08
Rear Udder Width					> 1,70
Udder Cleft					0,92
Udder Depth					1,22
Front Teat Placement					1,08
Rear Teat P. Rear					0,82
Teat Length					0,69

GANDY ROYAL

MEDALIST

IT020991065090 - 543HO00102 - aAa 432



Gandy Royal Medalist

SUPERSHOT

MCCUTCHEN

PLANET

Supersire x Super

Gandy Ludmilla GP83

Gandy Planet Lady Gaga GP81

TPI
+2316

NET MERIT \$
+381

CHEESE MERIT \$
+382

► **PRODUCTION TRAITS** based on 1231 daughters in 335 herds (99% REL)

Milk	% Fat	Fat	% Protein	Protein
+1125 lbs	-0,04	+31	+0,02	+40
K Cas AE		Beta Lact AB		Beta Cas A1A2

► **HEALTH TRAITS**

SCS	+3,09	SCE	+1,80
PL	+1,30	DCE	+2,10
DPR	-0,50	FI	-0,40

► **TYPE TRAITS** based on 1231 daughters in 335 herds (99% REL)

PTAT **+0,24** UDC **+0,45** FLC **-0,66**

Stature	-0,18
Strength	0,31
Body Dept	0,12
Dairy Form	0,14
Rump Angle	-0,09
Thurl Width	1,00
Rear Legs-Side	1,69
Rear Legs-Rear	-0,91
Foot Angle	-0,37
Feet & Legs Score	-0,51
F. Udder Attachment	0,67
Rear Udder Height	0,51
Rear Udder Width	0,84
Udder Cleft	0,53
Udder Depth	-0,39
Front Teat Placement	0,48
Rear Teat P. Rear	0,72
Teat Length	-0,90

Free Haplotypes



GANDY INSEME

MONZON

IT020991130892 - 543HO00145 - aAa 324165



Group Monzon Grugni

HOTROD

MCCUTCHEN

PLANET

Jerod x Iota

Gandy Ludmilla B+83

Gandy Planet Lady Gaga B+81

TPI
+2487

NET MERIT \$
+402

CHEESE MERIT \$
+406

► **PRODUCTION TRAITS** based on 205 daughters in 52 herds (99% REL)

Milk	% Fat	Fat	% Protein	Protein
+1285 lbs	+0,02	+55	+0,02	+47
K Cas AA		Beta Lact BB		Beta Cas A2A2

► **HEALTH TRAITS**

SCS	+3,03	SCE	+2,20
PL	+0,30	DCE	+2,40
DPR	-1,90	FI	-0,90

► **TYPE TRAITS** based on 205 daughters in 52 herds (99% REL)

PTAT **+1,64** UDC **+0,87** FLC **-0,33**

Stature	3,38
Strength	1,74
Body Dept	1,92
Dairy Form	1,70
Rump Angle	0,36
Thurl Width	1,26
Rear Legs-Side	0,36
Rear Legs-Rear	0,94
Foot Angle	1,08
Feet & Legs Score	0,21
F. Udder Attachment	1,46
Rear Udder Height	1,15
Rear Udder Width	1,80
Udder Cleft	1,83
Udder Depth	1,83
Front Teat Placement	1,15
Rear Teat P. Rear	1,47
Teat Length	-0,36

Free Haplotypes



GO-FARM MUNARI

IT019991671551 - 543HO00166 - aAa 234



HOTLINE x **DOZER** x **SNOWMASTER**
 Hotrod x Mogul x Go-Farm Mestalla EX90 x Marci 7716 MB87

TPI +2561 **NET MERIT \$** +385 **CHEESE MERIT \$** +397

► **PRODUCTION TRAITS** based on 946 daughters in 269 herds (99% REL)

Milk	% Fat	Fat	% Protein	Protein
+572 lbs	+0,12	+55	+0,08	+40
K Cas AA		Beta Lact AB		Beta Cas A1A2

► **HEALTH TRAITS**

SCS	+3,01	SCE	+2,20
PL	-1,30	DCE	+2,30
DPR	-2,20	FI	-1,30

► **TYPE TRAITS** based on 946 daughters in 269 herds (99% REL)

PTAT **+1,75** UDC **+2,06** FLC **+2,36**

Stature				0,77
Strength				0,55
Body Dept				0,43
Dairy Form				0,85
Rump Angle				-0,48
Thurl Width				-0,35
Rear Legs-Side				-1,49
Rear Legs-Rear				> 3,20
Foot Angle				> 2,56
Feet & Legs Score				> 2,14
F. Udder Attachment				> 2,44
Rear Udder Height				> 2,90
Rear Udder Width				> 2,72
Udder Cleft				0,65
Udder Depth				1,44
Front Teat Placement				1,03
Rear Teat P. Rear				1,08
Teat Length				-1,28

R DG NEUTRON

NL000715951660 - 543HO00167 - aAa 231465



CHARLEY x **POWERBALL** x **NUMERO UNO**
 Supershot x Mogul x R DG Noa x Tir-An N.U. Nyala MB86

TPI +2524 **NET MERIT \$** +501 **CHEESE MERIT \$** +509

► **PRODUCTION TRAITS** based on 4930 daughters in 1066 herds (99% REL)

Milk	% Fat	Fat	% Protein	Protein
+1719 lbs	-0,14	+23	+0,02	+58
K Cas BB		Beta Lact AA		Beta Cas A2A2

► **HEALTH TRAITS**

SCS	+2,81	SCE	+1,80
PL	+1,90	DCE	+1,80
DPR	+0,40	FI	+0,70

► **TYPE TRAITS** based on 2765 daughters in 694 herds (99% REL)

PTAT **+1,05** UDC **+0,87** FLC **+0,11**

Stature				> 1,77
Strength				-0,29
Body Dept				0,07
Dairy Form				1,37
Rump Angle				0,44
Thurl Width				1,32
Rear Legs-Side				1,11
Rear Legs-Rear				-0,07
Foot Angle				0,26
Feet & Legs Score				0,69
F. Udder Attachment				1,19
Rear Udder Height				1,18
Rear Udder Width				1,24
Udder Cleft				1,38
Udder Depth				1,11
Front Teat Placement				1,22
Rear Teat P. Rear				> 1,56
Teat Length				0,29

Free Haplotypes



GO-FARM
INSEME

NIBALI

IT019991867324 - 543HO00227 - aAa 243

SEXED SEMEN *Made in Italy*
FOEMINA
Sexed **ULTRA 4M****PADAWAN**

Jedi x Enforcer

X

EAGLEGo-Farm Natasha
B+84

X

POWERBALL

Dg R Nourya MB85

TPI
+2416**NET MERIT \$**
+409**CHEESE MERIT \$**
+419► **PRODUCTION TRAITS** based on 262 daughters in 122 herds (90% REL)

Milk	% Fat	Fat	% Protein	Protein
+832 lbs	-0,04	+19	+0,04	+36
K Cas BB		Beta Lact AA		Beta Cas A2A2

► **HEALTH TRAITS**

SCS	+2,82	SCE	+1,60
PL	+2,60	DCE	+1,90
DPR	+2,40	FI	+2,40

Free Haplotypes
[i-][i-][i-]► **TYPE TRAITS** based on 49 daughters in 26 herds (84% REL)PTAT **+0,34** UDC **+0,86** FLC **-0,87**

Stature				1,00
Strength				-0,08
Body Dept				-0,19
Dairy Form				0,28
Rump Angle				1,10
Thurl Width				-0,46
Rear Legs-Side				-2,11
Rear Legs-Rear				-0,71
Foot Angle				0,46
Feet & Legs Score				-0,53
F. Udder Attachment				1,00
Rear Udder Height				0,86
Rear Udder Width				0,75
Udder Cleft				1,39
Udder Depth				1,64
Front Teat Placement				1,05
Rear Teat P. Rear				2,19
Teat Length				-1,45

-0,5 0 +0,5 +1 +1,5

DOTTI
ENTERPRISE

RAFFAELLO

IT036990627056 - 543HO00212 - aAa 231

SEXED SEMEN *Made in Italy*
FOEMINA
Sexed **ULTRA****ENTERPRISE**

Penmanship x Balisto

X

SILVERDotti Silver Alessia
MB88

X

DOORMAN

Dotti Doorina MB86

TPI
+2384**NET MERIT \$**
+300**CHEESE MERIT \$**
+318► **PRODUCTION TRAITS** based on 148 daughters in 74 herds (97% REL)

Milk	% Fat	Fat	% Protein	Protein
+144 lbs	+0,10	+35	+0,09	+30
K Cas BB		Beta Lact AA		Beta Cas A2A2

► **HEALTH TRAITS**

SCS	+2,82	SCE	+2,20
PL	+1,10	DCE	+2,10
DPR	-1,30	FI	-1,10

La Corte di Dotti Silver

► **TYPE TRAITS** based on 148 daughters in 74 herds (94% REL)PTAT **+1,46** UDC **+1,27** FLC **+0,65**

Stature				1,62
Strength				0,61
Body Dept				1,10
Dairy Form				1,25
Rump Angle				1,65
Thurl Width				0,40
Rear Legs-Side				-0,05
Rear Legs-Rear				0,81
Foot Angle				1,52
Feet & Legs Score				0,94
F. Udder Attachment				1,61
Rear Udder Height				1,91
Rear Udder Width				1,53
Udder Cleft				1,14
Udder Depth				1,77
Front Teat Placement				0,55
Rear Teat P. Rear				0,72
Teat Length				1,28

-0,5 0 +0,5 +1 +1,5



CORVINI
INSEME

RAVASIO

IT098990608731 - TL TM TV TY - 234

SEXED SEMEN *Made in Italy*
FOEMINA
Sexed **ULTRA 4M**

SHARPE

1stclass x Epic

SILVER

Corvini Sissi ET MB87

SUPERSIRE

Corvini Siria MB85



Aiola Ravasio USSY 222 MB86

TPI
+2524

NET MERIT \$
+338

CHEESE MERIT \$
+345

► **PRODUCTION TRAITS** based on 527 daughters in 184 herds (97% REL)

Milk	% Fat	Fat	% Protein	Protein
+899 lbs	+0,05	+48	+0,01	+31
K Cas BB		Beta Lact AB		Beta Cas A1A2

► **HEALTH TRAITS**

SCS	+2,76	SCE	+2,10
PL	+0,90	DCE	+2,70
DPR	-1,60	FI	-1,60

► **TYPE TRAITS** based on 348 daughters in 128 herds (94% REL)

PTAT **+1,91** UDC **+2,72** FLC **+0,89**

Stature	>	2,38
Strength	>	1,17
Body Dept	>	0,31
Dairy Form	>	0,73
Rump Angle	>	1,12
Thurl Width	>	0,89
Rear Legs-Side	>	0,26
Rear Legs-Rear	>	1,42
Foot Angle	>	0,75
Feet & Legs Score	>	1,34
F. Udder Attachment	>	3,81
Rear Udder Height	>	3,34
Rear Udder Width	>	2,96
Udder Cleft	>	2,19
Udder Depth	>	3,25
Front Teat Placement	>	1,43
Rear Teat P. Rear	>	1,52
Teat Length	<	-0,78



DE VOLMER
DG

RUBESCO

NL000673947046 - 543H000208

IMAX

Spring x Mogul

JEDI

De Volmer Sabine

KINGBOY

Tramilda-N Kingboy
Sage ET



De Volmer DG Rubesco

TPI
+2688

NET MERIT \$
+635

CHEESE MERIT \$
+640

► **PRODUCTION TRAITS** based on 232 daughters in 81 herds (97% REL)

Milk	% Fat	Fat	% Protein	Protein
+1875 lbs	-0,03	+64	+0,03	+67
K Cas AA		Beta Lact AB		Beta Cas A2A2

► **HEALTH TRAITS**

SCS	+3,04	SCE	+1,90
PL	+2,00	DCE	+1,80
DPR	-2,80	FI	-1,70

► **TYPE TRAITS** based on 232 daughters in 81 herds (94% REL)

PTAT **+1,59** UDC **+1,77** FLC **+0,15**

Stature	>	1,65
Strength	>	1,52
Body Dept	>	1,01
Dairy Form	>	0,75
Rump Angle	>	-0,60
Thurl Width	>	1,93
Rear Legs-Side	>	-1,37
Rear Legs-Rear	>	0,74
Foot Angle	>	1,68
Feet & Legs Score	>	0,39
F. Udder Attachment	>	2,34
Rear Udder Height	>	2,10
Rear Udder Width	>	2,23
Udder Cleft	>	1,21
Udder Depth	>	2,19
Front Teat Placement	>	0,49
Rear Teat P. Rear	>	0,46
Teat Length	>	0,02

Free Haplotypes
[i-][i-]



FANTASY
ALLMEI

SHARPE

IT001990871408 - 543HO00087 - aAa 234156

SEXED SEMEN *Made in Italy*
FOEMINA
Sexed **ULTRA 4M**

ALTA1STCLASS

EPIC

HAYDEN

Numero Uno x Dorcy

Sepia ET MB85

Sabrin 192 MB85

TPI
+2429NET MERIT \$
+420CHEESE MERIT \$
+418

► PRODUCTION TRAITS based on 2823 daughters in 705 herds (99% REL)

Milk	% Fat	Fat	% Protein	Protein
+1399 lbs	-0,05	+38	-0,03	+35
K Cas BE		Beta Lact AA		Beta Cas A1A2

► HEALTH TRAITS

SCS	+2,88	SCE	+1,90
PL	+1,40	DCE	+3,10
DPR	-2,00	FI	-1,90

Free Haplotypes
i-i-i-i-i
MILK

► TYPE TRAITS based on 1935 daughters in 534 herds (99% REL)

PTAT **+1,07** UDC **+2,06** FLC **+0,54**

Stature	0,72
Strength	-0,85
Body Dept	-0,62
Dairy Form	0,82
Rump Angle	> 2,00
Thurl Width	-0,54
Rear Legs-Side	0,10
Rear Legs-Rear	0,63
Foot Angle	0,71
Feet & Legs Score	0,65
F. Udder Attachment	> 2,13
Rear Udder Height	> 2,91
Rear Udder Width	1,49
Udder Cleft	1,24
Udder Depth	> 2,40
Front Teat Placement	0,38
Rear Teat P. Rear	0,82
Teat Length	-0,10

AIMONETTA
INSEME

SOGNO ROSSO PR

Polled

IT006990129591 - 543HO00246 - aAa 234

SEXED SEMEN *Made in Italy*
FOEMINA
Sexed **ULTRA 4M**

LUCKY

KINGBOY

NUMERO UNO

Jax P x Mogul

Lesperron Kingboy
Santana MB85Josey-Llc Sangaria
MB85TPI
+2339NET MERIT \$
+336CHEESE MERIT \$
+354

► PRODUCTION TRAITS based on 60 daughters in 32 herds (84% REL)

Milk	% Fat	Fat	% Protein	Protein
-19 lbs	+0,09	+25	+0,07	+18
K Cas AB		Beta Lact AB		Beta Cas A2A2

► HEALTH TRAITS

SCS	+2,64	SCE	+1,90
PL	+2,80	DCE	+2,70
DPR	-0,20	FI	+0,20

Free Haplotypes
i-i-i-i-i
A2A2
BETA CASEIN

► TYPE TRAITS based on 26 daughters in 18 herds (80% REL)

PTAT **+0,94** UDC **+1,11** FLC **+0,23**

Stature	1,32
Strength	0,74
Body Dept	0,79
Dairy Form	0,44
Rump Angle	1,08
Thurl Width	0,69
Rear Legs-Side	0,09
Rear Legs-Rear	0,31
Foot Angle	0,80
Feet & Legs Score	0,52
F. Udder Attachment	> 1,66
Rear Udder Height	> 1,66
Rear Udder Width	0,91
Udder Cleft	0,64
Udder Depth	> 1,82
Front Teat Placement	0,46
Rear Teat P. Rear	-0,19
Teat Length	0,38

GO-FARM **SORRENTO**

IT019991728974 - 543HO00192 - aAa 324156



Go-Farm Sorrento

HOTLINE **BATTLECRY** **DOORMAN**
 Hotrod x Mogul x Go-Farm Smack GP82 x Go-Farm Sanwood VG86

TPI +2614 **NET MERIT \$** +511 **CHEESE MERIT \$** +531

► **PRODUCTION TRAITS** based on 202 daughters in 76 herds (93% REL)

Milk	% Fat	Fat	% Protein	Protein
+489 lbs	+0,21	+80	+0,08	+39
K Cas AB		Beta Lact AA		Beta Cas A2A2

► **HEALTH TRAITS**

SCS	+2,70	SCE	+2,00
PL	-0,40	DCE	+2,20
DPR	-2,50	FI	-1,90

► **TYPE TRAITS** based on 101 daughters in 39 herds (88% REL)

PTAT **+1,50** UDC **+1,51** FLC **+1,23**

Stature				1,21
Strength				0,06
Body Dept				0,66
Dairy Form				1,59
Rump Angle				-0,92
Thurl Width				0,70
Rear Legs-Side				-0,40
Rear Legs-Rear				1,86
Foot Angle				1,36
Feet & Legs Score				1,27
F. Udder Attachment				2,12
Rear Udder Height				1,55
Rear Udder Width				1,92
Udder Cleft				1,47
Udder Depth				1,45
Front Teat Placement				0,69
Rear Teat P. Rear				1,00
Teat Length				0,08



MIRABELL **SOUND SYSTEM**

IT017991512628 - 543HO00086 - aAa 234156



Mirabell Sound System

SILVER **SUPERSIRE** **SHOTTLE**
 Mogul x Snowman x Mirabell Ssire Shana ET MB87 x Mirabell Nizza EX90

TPI +2603 **NET MERIT \$** +536 **CHEESE MERIT \$** +540

► **PRODUCTION TRAITS** based on 8419 daughters in 1534 herds (99% REL)

Milk	% Fat	Fat	% Protein	Protein
+1228 lbs	+0,11	+80	+0,02	+45
K Cas BE		Beta Lact AA		Beta Cas A1A1

► **HEALTH TRAITS**

SCS	+2,99	SCE	+3,00
PL	+0,80	DCE	+2,20
DPR	-1,70	FI	-1,00



► **TYPE TRAITS** based on 5451 daughters in 1147 herds (99% REL)

PTAT **+1,60** UDC **+1,18** FLC **-0,26**

Stature				2,45
Strength				1,20
Body Dept				1,70
Dairy Form				2,38
Rump Angle				0,32
Thurl Width				1,23
Rear Legs-Side				1,89
Rear Legs-Rear				0,18
Foot Angle				0,53
Feet & Legs Score				0,38
F. Udder Attachment				1,25
Rear Udder Height				2,56
Rear Udder Width				2,17
Udder Cleft				0,88
Udder Depth				0,83
Front Teat Placement				1,10
Rear Teat P. Rear				1,15
Teat Length				0,32



CORVINI

TELESFORO

IT098990685193 - 543HO00235 - aAa 243

SEXED SEMEN *Made in Italy*
FOEMINA
Sexed **ULTRA**

SOUND SYSTEM

DERWOOD

DEMPSEY

Silver x Supersire

Doorman x Man-Oman

Goldwyn x Derry

TPI
+2500NET MERIT \$
+444CHEESE MERIT \$
+454

► PRODUCTION TRAITS based on 50 daughters in 35 herds (99% REL)

Milk	% Fat	Fat	% Protein	Protein
+897 lbs	+0,04	+45	+0,08	+50
K Cas BE		Beta Lact AA		Beta Cas A1A2

► HEALTH TRAITS

SCS	+3,10	SCE	+2,30
PL	+0,40	DCE	+2,50
DPR	-1,30	FI	-0,80

► TYPE TRAITS based on 50 daughters in 35 herds (99% REL)

PTAT **+1,53** UDC **+1,61** FLC **+0,23**

Stature	1,29
Strength	0,56
Body Dept	0,99
Dairy Form	1,98
Rump Angle	-0,58
Thurl Width	0,70
Rear Legs-Side	1,18
Rear Legs-Rear	0,34
Foot Angle	0,63
Feet & Legs Score	0,56
F. Udder Attachment	1,41
Rear Udder Height	2,81
Rear Udder Width	2,45
Udder Cleft	1,28
Udder Depth	0,70
Front Teat Placement	1,00
Rear Teat P. Rear	1,24
Teat Length	-0,27

GARIONI
ROYAL

VANHALEN

IT019991363560 - 543HO00067 - aAa 324561

SEXED SEMEN *Made in Italy*
FOEMINA
Sexed **ULTRA 4M**

MONTROSS

MCCUTCHEN

OBSERVER

Mogul x Bolton

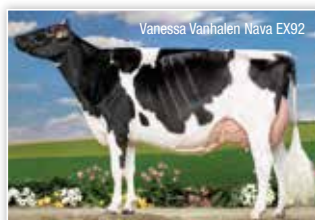
Sonray-Acres Mcthn
B+84Sonray-Acres Soc
ObservrTPI
+2466NET MERIT \$
+395CHEESE MERIT \$
+401

► PRODUCTION TRAITS based on 13452 daughters in 2323 herds (99% REL)

Milk	% Fat	Fat	% Protein	Protein
+1038 lbs	+0,03	+48	+0,02	+39
K Cas AB		Beta Lact AA		Beta Cas A2A2

► HEALTH TRAITS

SCS	+2,90	SCE	+1,90
PL	+1,20	DCE	+2,30
DPR	-1,70	FI	-1,40



► TYPE TRAITS based on 8974 daughters in 1801 herds (99% REL)

PTAT **+1,29** UDC **+1,25** FLC **+0,89**

Stature	0,63
Strength	0,64
Body Dept	0,63
Dairy Form	1,08
Rump Angle	-0,71
Thurl Width	0,51
Rear Legs-Side	-1,40
Rear Legs-Rear	1,21
Foot Angle	1,16
Feet & Legs Score	0,92
F. Udder Attachment	1,88
Rear Udder Height	2,02
Rear Udder Width	1,91
Udder Cleft	-0,19
Udder Depth	1,05
Front Teat Placement	-0,22
Rear Teat P. Rear	-1,39
Teat Length	-0,74

THE PERFECT PARTNERSHIP



SexedULTRA 4M

continues to pass 90% gender accuracy allowing the farmer to feel confident in producing female progeny from the very best of the herd

INSEME BEEF IMPACT

Maximise the value of every beef pregnancy by selecting our proven bulls that suit your farm system

Inseme's Beef Impact encompasses real on-farm data which is aimed at Dairy farmers wanting to select beef sires that will suit their system for Ease of Management and added Market Value. This maximises productivity and profitability of the dairy herd by allowing customers to identify proven quality bulls who are specialists for desired traits.



LUCE WATER PARTY BOY

UK116863300075

			SIRE ATTRIBUT DU FOND DE BOIS	DAM BORTHERS KYRIE	MGS ANNANWATER VINCE
GESTATION LENGTH (GG)	LONGER	285	█	281	SHORTER
CALVING DIFFICULTY (%)	HARDER	5	█	3.2	EASIER
CALF VIGOUR (%)	-VIGOROUS	1	█	1.7	+VIGOROUS
CALF QUALITY (%)	POORER	80	█	91.5	EXCELLENT
BIRTH WEIGHT (KG)	LIGHTER	0	█	1.9	HEAVIER



TWEMLOWS OFFICER

UK 305928/401634

			SIRE AMPERTAINE COMMANDER	DAM TWEMLOWS HUM	MGS -
GESTATION LENGTH (GG)	LONGER	285	█	284	SHORTER
CALVING DIFFICULTY (%)	HARDER	5	█	2.8	EASIER
CALF VIGOUR (%)	-VIGOROUS	1	█	1.2	+VIGOROUS
CALF QUALITY (%)	POORER	80	█	99	EXCELLENT
BIRTH WEIGHT (KG)	LIGHTER	0	█	-0.2	HEAVIER

Ecofeed®

The largest evidence-based Feed Conversion Efficiency index in the world

The EcoFeed® program utilizes a measure of feed conversion efficiency known as residual feed intake (RFI). RFI is a measure that quantifies the variation in feed intake beyond that needed to support maintenance and performance requirements. RFI can be used in multi trait selection indexes to simultaneously improve both feed conversion efficiency and other economically relevant traits, as it is independent of body size and production. This makes RFI an ideal trait for the EcoFeed® index as we strive to create a future in which dairy cattle produce more outputs with fewer inputs, providing farmers with the economic and environmental sustainability necessary for long term success.

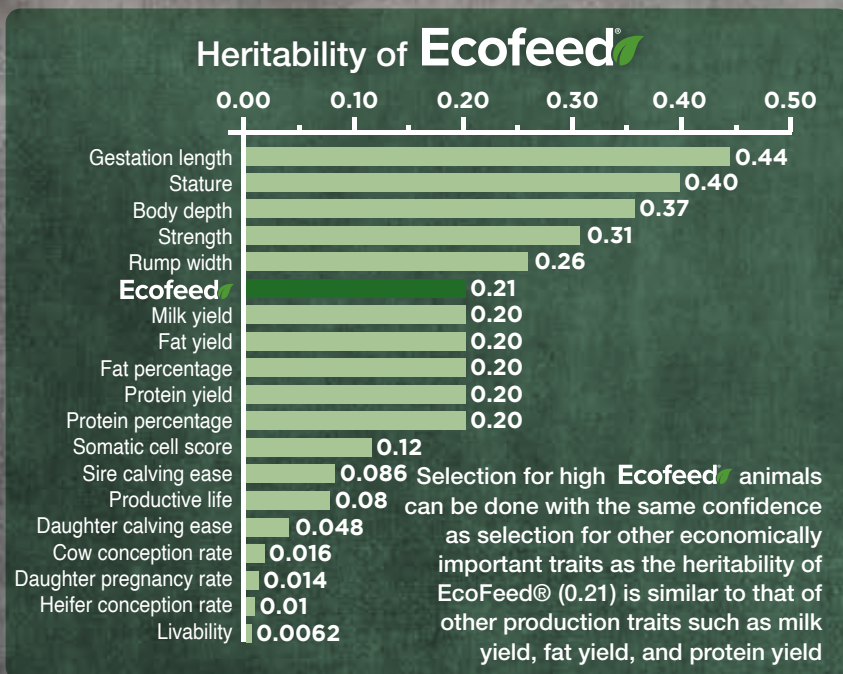


Bull name	Ecofeed® Cow
Hadrian	122
Bristol	122
Bellagio	118
Wally Red P	113
Belcanto	112
Hadrian	111
Fabius	111
Alcerosso	109
Indro	109
Brabus	108
Suvan	106
Emerito	106
Delaine	106
Brunelleschi	105
Habitus	105

15%
less feed
consumed

15%
less methane
emissions

21%
less water
consumed



Bull name	Ecofeed® Heifer
Alcerosso	114
Bellagio	112
Brunelleschi	110
Ravasio	110
Sonik	108
Baruch	107
Broly	107
Sprinter	107
Salieri	107
Scorpius	106
Kyrios	106
Telesforo	106
Stratos	106
Ponchielli	106
Hadrian	105



italian style

ediprima
L. 10/2017

August
2023

Inseme
by STg

INSEME S.r.l.

Strada Cadiane 179 – 41126 Modena (MO) - ITALY

Tel +39 059 514611 • Mail: info@inseme.it • www.inseme.it •  InsemeGenetics •  Insemegenetics